
MESA ENERGY PARTNERS LLC

**BDU 6607B-G11-299
PICEANCE
Rio Blanco County , Colorado**

Cement Multiple Stages
24-Aug-2010

Post Job Report

The Road to Excellence Starts with Safety

Sold To #: 358666	Ship To #: 2802539	Quote #:	Sales Order #: 7585120
Customer: MESA ENERGY PARTNERS LLC		Customer Rep: Chaney, Phil	
Well Name: BDU		Well #: 6607B-G11-299	API/UWI #:
Field: PICEANCE	City (SAP): RANGELY	County/Parish: Rio Blanco	State: Colorado
Contractor: Frontier		Rig/Platform Name/Num: FRONTIER 2	
Job Purpose: Cement Multiple Stages			
Well Type: Development Well		Job Type: Cement Multiple Stages	
Sales Person: KOHL, KYLE		Srvc Supervisor: CARTER, ERIC	MBU ID Emp #: 345598

Job Personnel

HES Emp Name	Exp Hrs	Emp #	HES Emp Name	Exp Hrs	Emp #	HES Emp Name	Exp Hrs	Emp #
BLUST, CHARLES Thomas	19	386662	CARTER, ERIC Earl	19	345598	CUNNINGHAM, TANNER Wade	19	445660
HAMMOND, ANSON Perry	19	421370	HAMMOND, DENNIS C	19	287025	JENSEN, SHANE Lynn	19	441759
ZUMWALT, ORVILLE Raymond	16	398157	MOGK, JOHN	19	465036			

Equipment

HES Unit #	Distance-1 way	HES Unit #	Distance-1 way	HES Unit #	Distance-1 way	HES Unit #	Distance-1 way
10000394	180 mile	10533645	180 mile	10565341	180 mile	10616651C	180 mile
10804567	180 mile	10951251	180 mile	10995025	180 mile	11139328	180 mile

Job Hours

Date	On Location Hours	Operating Hours	Date	On Location Hours	Operating Hours	Date	On Location Hours	Operating Hours
8/24/10	19	8						

TOTAL	Total is the sum of each column separately							
--------------	--	--	--	--	--	--	--	--

Job

Formation Name	Formation Depth (MD)	Top	Bottom	Form Type	Job depth MD	Job Depth TVD	Water Depth	Perforation Depth (MD)	From	To
				BHST	3036. ft	3036. ft				

Well Data

Description	New / Used	Max pressure psig	Size in	ID in	Weight lbm/ft	Thread	Grade	Top MD ft	Bottom MD ft	Top TVD ft	Bottom TVD ft
-------------	------------	-------------------	---------	-------	---------------	--------	-------	-----------	--------------	------------	---------------

Sales/Rental/3rd Party (HES)

Description	Qty	Qty uom	Depth	Supplier
CMTR,TY P ES,9-5/8 8RD 32.3-40PPF,K-55	1	EA		
PLUG SET,FREE FALL,9-5/8 8RD&BUTRS	1	EA		

Tools and Accessories

Type	Size	Qty	Make	Depth	Type	Size	Qty	Make	Depth	Type	Size	Qty	Make
Guide Shoe					Packer					Top Plug			
Float Shoe					Bridge Plug					Bottom Plug			
Float Collar					Retainer					SSR plug set			
Insert Float										Plug Container			
Stage Tool										Centralizers			

Miscellaneous Materials

Gelling Agt	Conc	Surfactant	Conc	Acid Type	Qty	Conc	%
Treatment Fld	Conc	Inhibitor	Conc	Sand Type	Size	Qty	

Fluid Data									
Stage/Plug #: 1									
Fluid #	Stage Type	Fluid Name	Qty	Qty uom	Mixing Density lbm/gal	Yield ft ³ /sk	Mix Fluid Gal/sk	Rate bbl/min	Total Mix Fluid Gal/sk
1	First Stage Water Spacer		10.00	bbl	8.33	.0	.0	4	
2	SUPER FLUSH - XLC	SUPERFLUSH-XLC - SBM (549694)	40.00	bbl	10.2	.0	.0	4	
3	Fresh Water Spacer		10.00	bbl	8.33	.0	.0	6	
4	1st Stage Lead	VARICEM (TM) CEMENT (452009)	800.0	sacks	12.3	2.34	12.53	6	12.53
	12.53 Gal	FRESH WATER							
5	1st Stage Tail	VARICEM (TM) CEMENT (452009)	150.0	sacks	12.8	2.08	10.59	4	10.59
	10.59 Gal	FRESH WATER							
6	1st Stage Fresh Water Displacement		110.00	bbl	8.33	.0	.0	4	
7	1st Stage Mud Displacement		123.00	bbl	.	.0	.0	4	
8	2 nd Stage Fresh Water Spacer			bbl	8.33	.0	.0	.4	
9	2nd Stage Tail	VARICEM (TM) CEMENT (452009)	430.0	sacks	12.3	2.38	13.75	8	13.75
	13.75 Gal	FRESH WATER							
10	Fresh Water Displacement			bbl	8.33	.0	.0	6	
Calculated Values		Pressures		Volumes					
Displacement		Shut In: Instant		Lost Returns		Cement Slurry		Pad	
Top Of Cement		5 Min		Cement Returns		Actual Displacement		Treatment	
Frac Gradient		15 Min		Spacers		Load and Breakdown		Total Job	
Rates									
Circulating		Mixing		Displacement		Avg. Job			
Cement Left In Pipe	Amount	0 ft	Reason	Shoe Joint					
Frac Ring # 1 @	ID	Frac ring # 2 @	ID	Frac Ring # 3 @	ID	Frac Ring # 4 @	ID		
The Information Stated Herein Is Correct				Customer Representative Signature					

The Road to Excellence Starts with Safety

Sold To #: 358666	Ship To #: 2802539	Quote #:	Sales Order #: 7585120
Customer: MESA ENERGY PARTNERS LLC		Customer Rep: Chaney, Phil	
Well Name: BDU		Well #: 6607B-G11-299	API/UWI #:
Field: PICEANCE	City (SAP): RANGELY	County/Parish: Rio Blanco	State: Colorado
Legal Description:			
Lat: N 0 deg. OR N 0 deg. 0 min. 0 secs.		Long: E 0 deg. OR E 0 deg. 0 min. 0 secs.	
Contractor: Frontier		Rig/Platform Name/Num: FRONTIER 2	
Job Purpose: Cement Multiple Stages			Ticket Amount:
Well Type: Development Well		Job Type: Cement Multiple Stages	
Sales Person: KOHL, KYLE		Srvc Supervisor: CARTER, ERIC	MBU ID Emp #: 345598

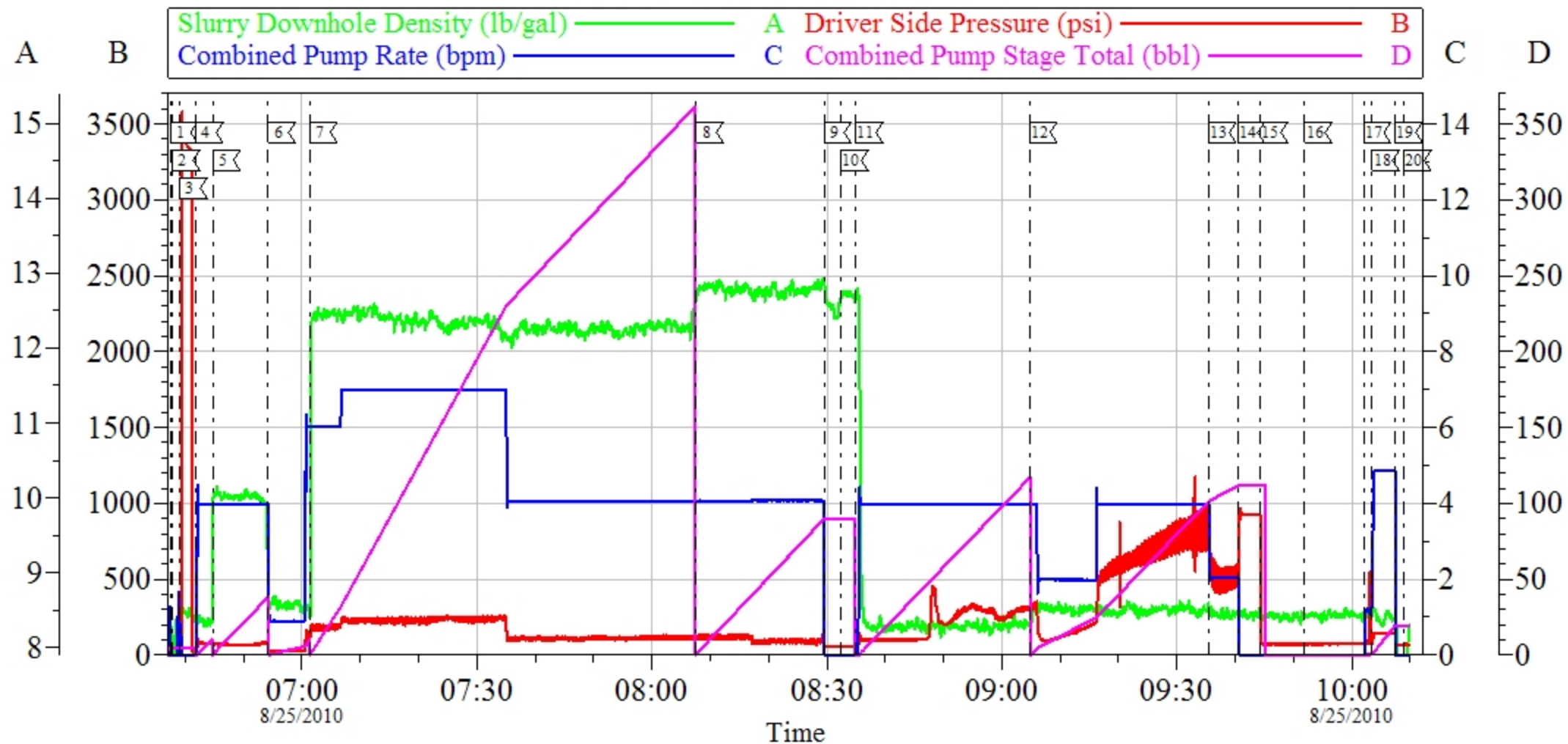
Activity Description	Date/Time	Cht #	Rate bbl/min	Volume bbl		Pressure psig		Comments
				Stage	Total	Tubing	Casing	
Call Out	08/23/2010 09:10							
Depart Yard Safety Meeting	08/24/2010 00:50							ATTENDED BY ALL HES CREW
Crew Leave Yard	08/24/2010 01:00							
Arrive At Loc	08/24/2010 04:00							RIG RUNNING CASING
Assessment Of Location Safety Meeting	08/24/2010 04:10							ATTENDED BY ALL HES CREW
Other	08/24/2010 06:40							SPOT EQUIPMENT
Pre-Rig Up Safety Meeting	08/24/2010 06:50							ATTENDED BY ALL HES CREW
Rig-Up Equipment	08/24/2010 07:00							
Pre-Job Safety Meeting	08/24/2010 07:40							ATTENDED BY ALL HES CREW, RIG CREW AND COMPANY REP
Start Job	08/24/2010 08:06							TD 3035', TP 3036', SJ 22.36', FC 3013.6', CASING 9.625", 36#, J-55, HOLE 12.25", STAGE TOOL AT 1629'
Other	08/24/2010 08:07							PRIME LINES
Test Lines	08/24/2010 08:08							PRESSURED UP TO 3460 PSI, PRESSURE HELD
Pump Spacer 1	08/24/2010 08:10		4	10			17.0	FRESH WATER
Pump Spacer 2	08/24/2010 08:13		4	40			62.0	SUPER FLUSH XLC
Pump Spacer 1	08/24/2010 08:22		4	10			18.0	FRESH WATER

Activity Description	Date/Time	Cht #	Rate bbl/min	Volume bbl		Pressure psig		Comments
				Stage	Total	Tubing	Casing	
Pump 1st Stage Lead Slurry	08/24/2010 08:29		7	333.4			476.0	800 SKS MIXED AT 12.3 PPG, 2.34 YIELD, 12.53 GL/SK, SLOWED RATE AT 230 BBLS PUMPED
Pump 1st Stage Tail Slurry	08/24/2010 09:35		4	55.6			270.0	150 SKS MIXED AT 12.8 PPG, 2.08 YIELD, 10.59 GL/SK
Shutdown	08/24/2010 09:58							
Drop Plug	08/24/2010 10:02							PLUG LUANCHED
Pump Displacement	08/24/2010 10:04		4	110			270.0	FRESH WATER
Pump Displacement	08/24/2010 10:33		4	112.9			770.0	8.6 PPG MUD
Slow Rate	08/24/2010 11:03		2	10			470.0	
Bump Plug	08/24/2010 11:08						990.0	PLUG LANDED, NO CIRCULATION THROUGH OUT JOB.
Check Floats	08/24/2010 11:12							FLOATS HELD
Drop Opening Device For Multiple Stage Cementer	08/24/2010 11:19							WAIT 10 MINUTES
Open Multiple Stage Cementer	08/24/2010 11:30						1260.0	PRESSURED UP
Circulate Well	08/24/2010 11:32		5	20			88.0	
Comment	08/24/2010 11:40							TURNED OVER TO RIG, DID NOT ACHIEVE CIRCULATION, PUMPED 600 BBLS OF MUD AND DID NOT GAIN RETURNS
Comment	08/24/2010 18:12							RIG TAGGED TOP OF WELL FLUID AT 1000', RIG PUMPED 150 BBLS OF VISC PILL DOWN BACKSIDE AS HES PUMPED H2O THROUGH CASING TO ACHIEVE LIFT PRESSURE
Pump Spacer 1	08/24/2010 18:30		0.4	57			33.0	FRESH WATER

Activity Description	Date/Time	Cht #	Rate bbl/min	Volume bbl		Pressure psig		Comments
				Stage	Total	Tubing	Casing	
Pump 2nd Stage Tail Slurry	08/24/2010 20:33		8	182.3			160.0	430 SKS MIXED AT 12.3 PPG, 2.38 YIELD, 13.75 GL/SK
Drop Plug	08/24/2010 20:59							PLUG LUANCED, AT COMPANY REP'S REQUEST HES DID NOT SHUTDOWN TO DROP THE PLUG
Pump Displacement	08/24/2010 21:00		8	112.9			240.0	FRESH WATER
Slow Rate	08/24/2010 21:20		2	10			20.0	
Bump Plug	08/24/2010 21:22						.0	PLUG LANDED
Close Multiple Stage Cementer	08/24/2010 21:22						1720.0	PRESSURED UP AND HELD FOR 2 MINUTES
Release Casing Pressure	08/24/2010 21:25						.0	FLOATS HELD
End Job	08/24/2010 21:28							GAINED CIRCULATION AT 45 BBLS OF CEMENT GONE, LOST CIRCULATION AT 160 BBLS OF CEMENT GONE, DID NOT REGAIN RETURNS
Post-Job Safety Meeting (Pre Rig-Down)	08/24/2010 21:35							ATTENDED BY ALL HES CREW
Rig-Down Equipment	08/24/2010 21:40							
Depart Location Safety Meeting	08/24/2010 22:50							ATTENDED BY ALL HES CREW
Crew Leave Location	08/24/2010 23:00							THANK YOU FOR USING HALLIBURTON CEMENT, ERIC CARTER AND CREW.

MESA ENERGY

2 STAGE/6607B-G11-299



Customer: MESA ENERGY
Well Description: RTD
Company Rep: PHIL CHANEY

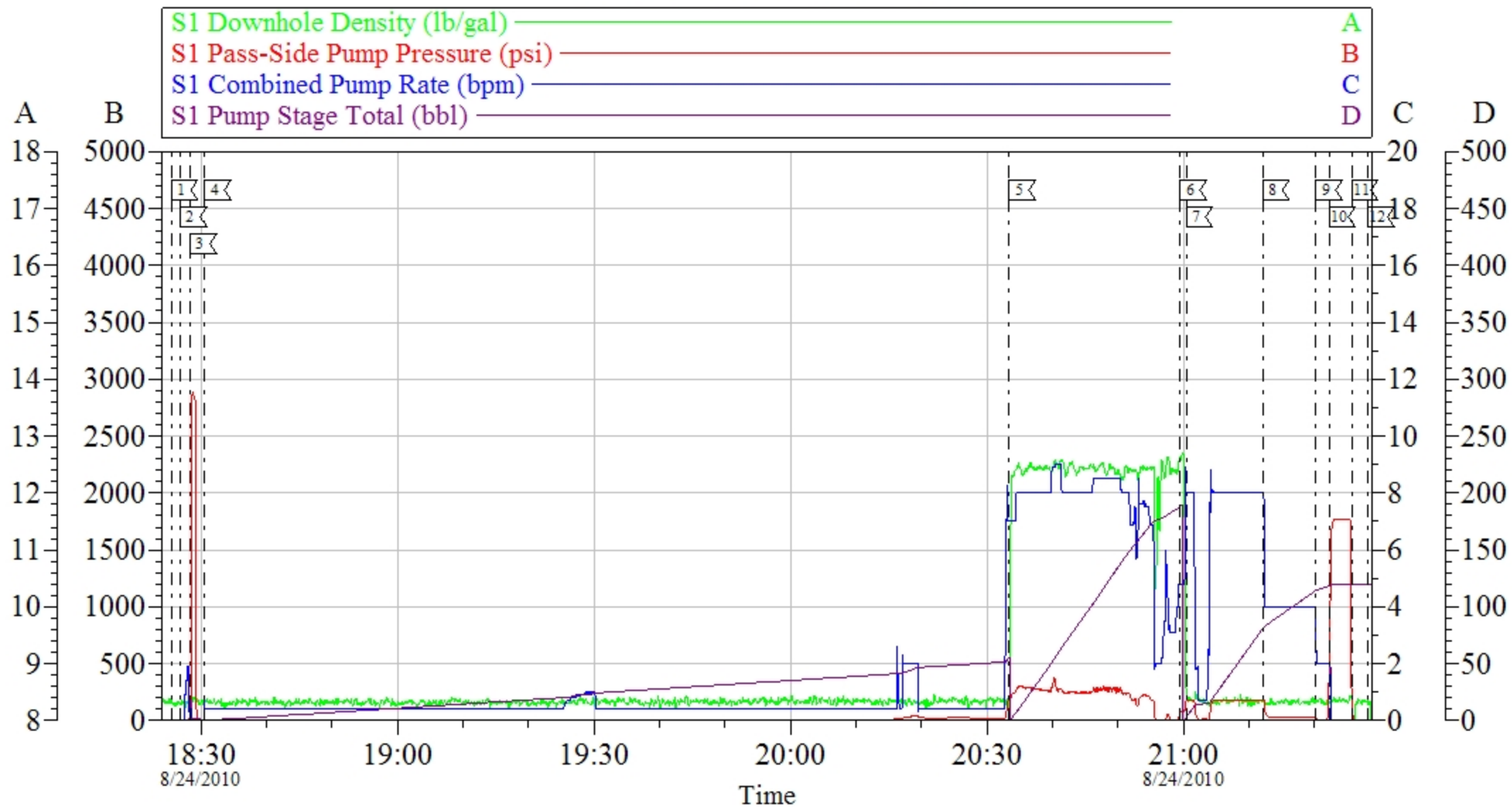
Job Date: 24-Aug-2010
Job Type: 2 STAGE
Cement Supervisor: ERIC CARTER

Sales Order #: 7585120
ADC Used: YES
Elite #/Operator: 2/SHANE JENSEN

OptiCem v6.4.0
24-Aug-10 12:34

MESA ENERGY

2 STAGE/6607B-G11-299



Customer: MESA ENERGY
 Well Description: 6607B-G-11-299
 Company Rep: PHIL CHANEY

Job Date: 24-Aug-2010
 Job Type: 2 STAGE
 Cement Supervisor: ERIC CARTER

Sales Order #: 7585120
 ADC Used: YES
 Elite #/Operator: 4/SHANE JENSEN

OptiCem v6.4.0
 24-Aug-10 21:56