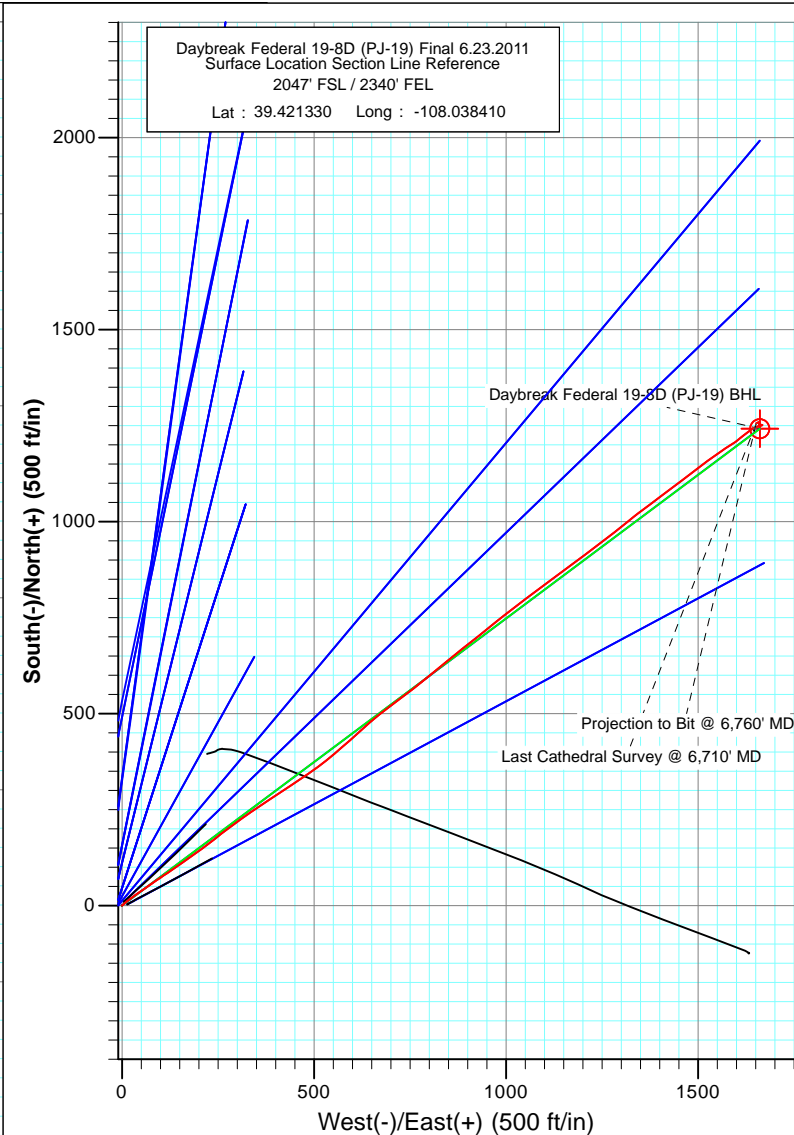
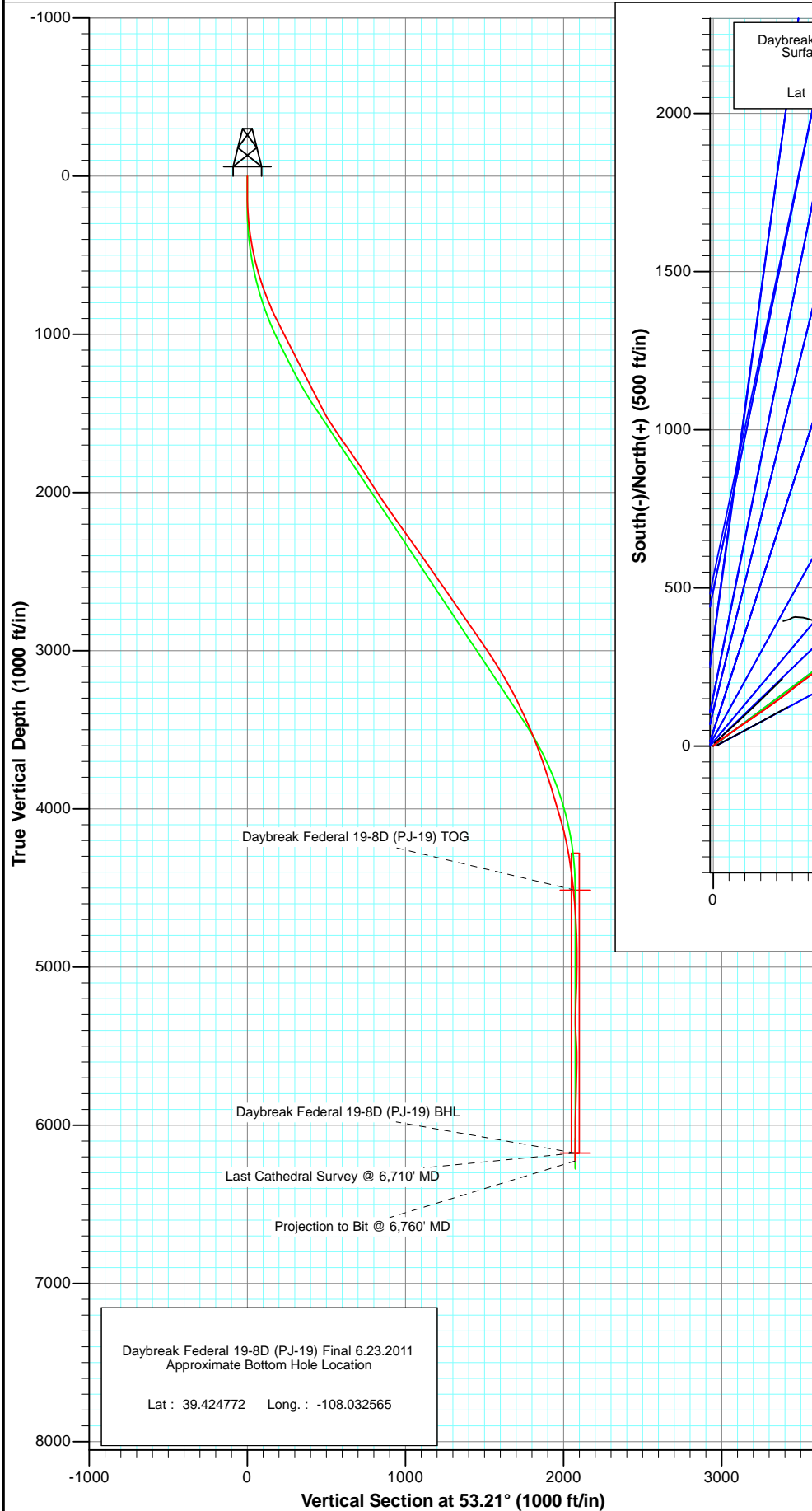




Project: S. Piceance (Parachute)  
Site: NWSE S19-T7S-R6  
Daybreak Federal 19-8D (PJ-19) Final 6.23.2  
Wellbore: DD  
Plan: FINAL



Azimuths to True North  
Magnetic North: 10.36°

Magnetic Field  
Strength: 52208.7nT  
Dip Angle: 65.67°  
Date: 6/13/2011  
Model: IGRF2010

DESIGN DETAILS: DD

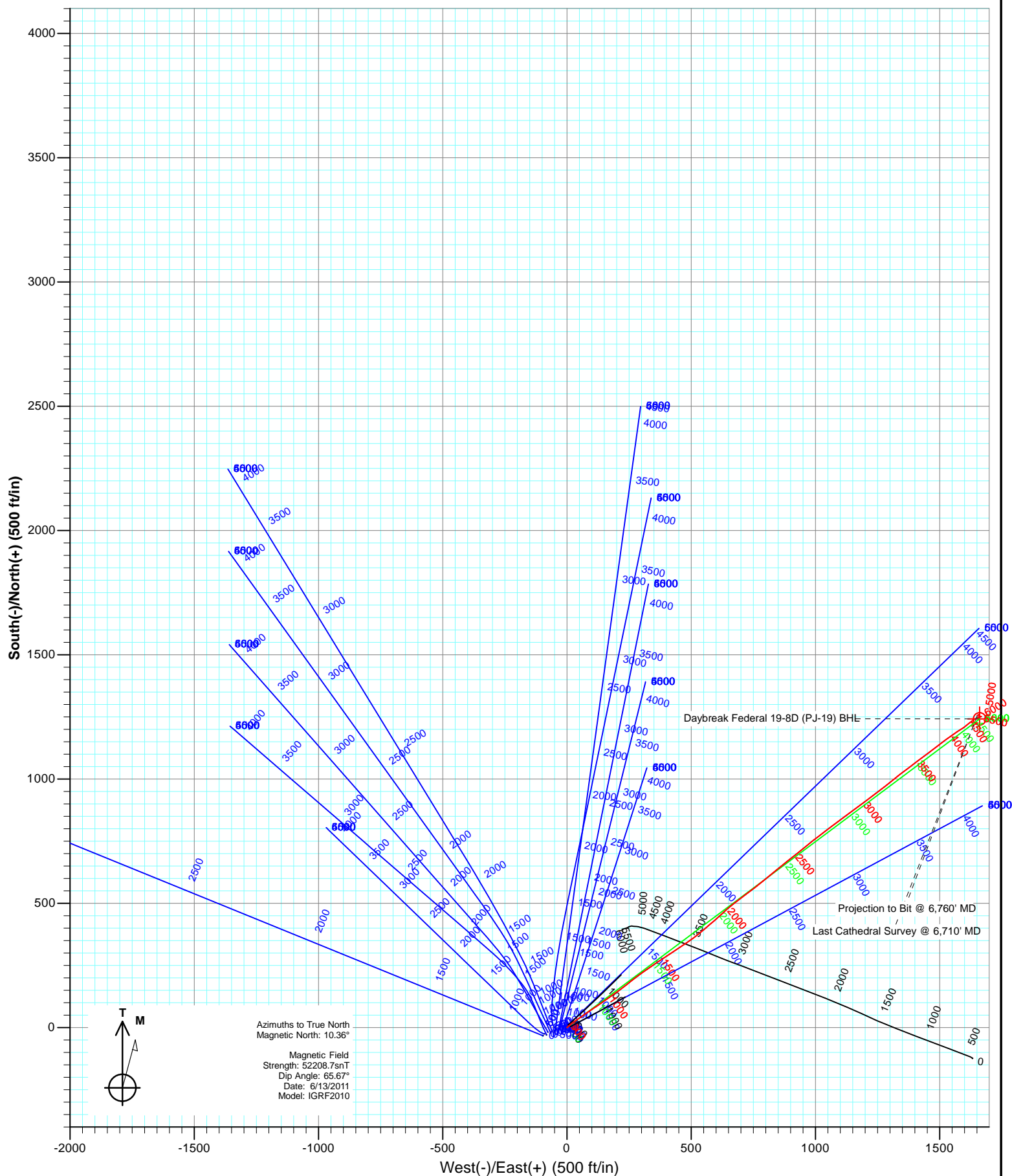
115230 (SH); BH

KBE @ 5449.0ft (Original Well Elev)

Target	Azimuth	Origin Type	N/S	E/W
Daybreak Federal 19-8D (PJ-19) BHL	53.21	Slot	0.0	0.0

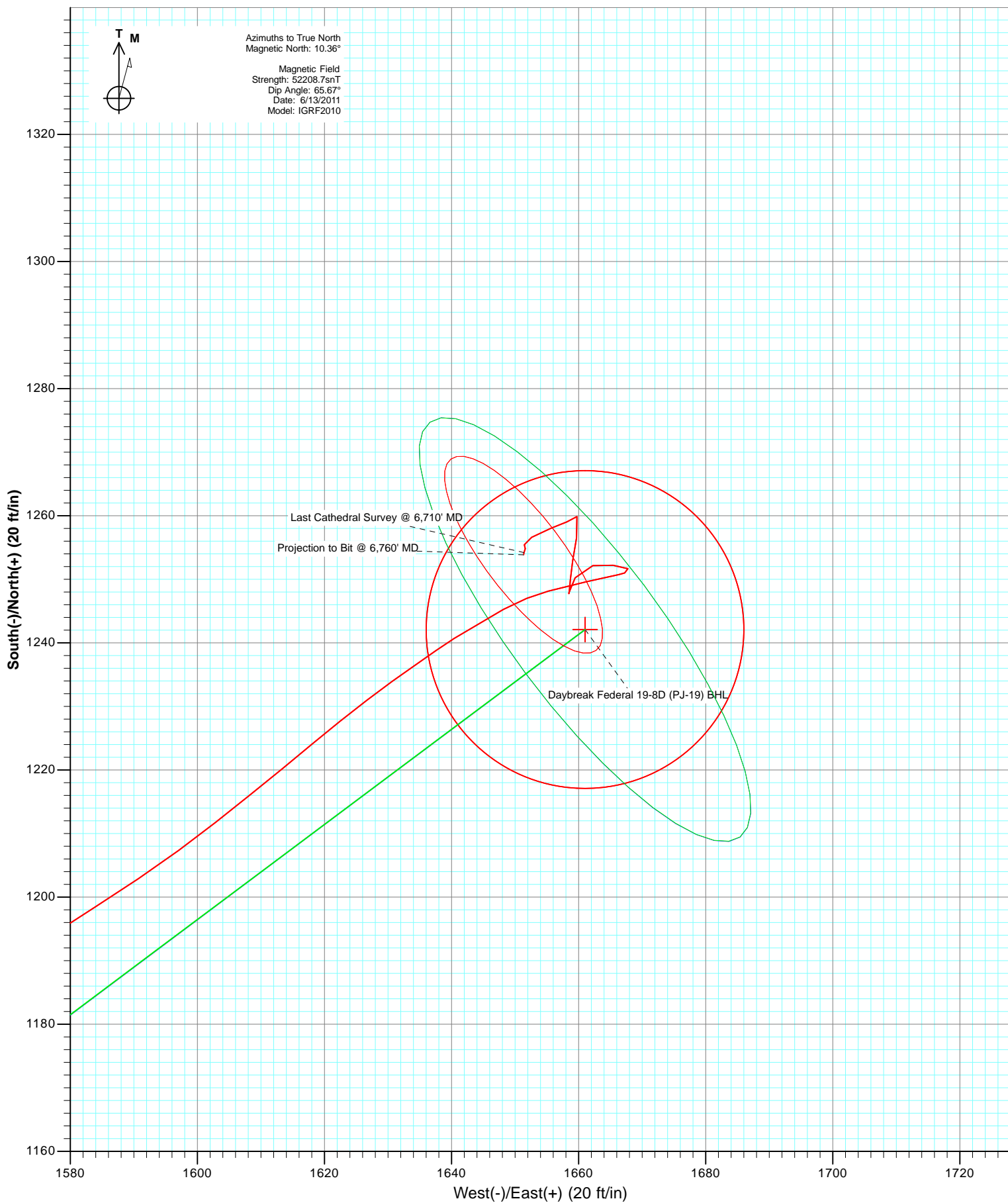


Project: S. Piceance (Parachute)  
Site: NWSE S19-T7S-R95W (PJ-19 P;  
Daybreak Federal 19-8D (PJ-19)  
Wellbore: DD  
Plan: FINAL





Project: S. Piceance (Parachute)  
Site: NWSE S19-T7S-R95W (PJ-19 Pad)  
Well: Daybreak Federal 19-8D (PJ-19)  
Wellbore: DD  
Plan: FINAL



## Survey Report

<b>Company:</b>	EnCana Oil & Gas (USA) Inc	<b>Local Co-ordinate Reference:</b>	Well Daybreak Federal 19-8D (PJ-19) Directional
<b>Project:</b>	S. Piceance (Parachute)	<b>TVD Reference:</b>	KBE @ 5449.0ft (Original Well Elev)
<b>Site:</b>	NWSE S19-T7S-R95W (PJ-19 Pad)	<b>MD Reference:</b>	KBE @ 5449.0ft (Original Well Elev)
<b>Well:</b>	Daybreak Federal 19-8D (PJ-19) Directional	<b>North Reference:</b>	True
<b>Wellbore:</b>	Plan 3.31.2011	<b>Survey Calculation Method:</b>	Minimum Curvature
<b>Design:</b>	DD	<b>Database:</b>	USA EDM 5000 Multi Users DB

<b>Project</b>	S. Piceance (Parachute), Garfield County, CO		
<b>Map System:</b>	US State Plane 1983	<b>System Datum:</b>	Mean Sea Level
<b>Geo Datum:</b>	North American Datum 1983		
<b>Map Zone:</b>	Colorado Central Zone		

<b>Site</b>	NWSE S19-T7S-R95W (PJ-19 Pad)			
<b>Site Position:</b>		<b>Northing:</b>	1,588,373.67 ft	<b>Latitude:</b> 39.421340
<b>From:</b>	Lat/Long	<b>Easting:</b>	2,283,011.65 ft	<b>Longitude:</b> -108.038360
<b>Position Uncertainty:</b>	0.0 ft	<b>Slot Radius:</b>	13.200 in	<b>Grid Convergence:</b> -1.60 °

<b>Well</b>	Daybreak Federal 19-8D (PJ-19) Directional Plan 3.31.2011			
<b>Well Position</b>	<b>+N/-S</b>	0.0 ft	<b>Northing:</b>	1,588,370.40 ft
	<b>+E/-W</b>	0.0 ft	<b>Easting:</b>	2,282,997.43 ft
<b>Position Uncertainty</b>		0.0 ft	<b>Wellhead Elevation:</b>	ft
			<b>Ground Level:</b>	5,427.0 ft

<b>Wellbore</b>	DD				
<b>Magnetics</b>	<b>Model Name</b>	<b>Sample Date</b>	<b>Declination (°)</b>	<b>Dip Angle (°)</b>	<b>Field Strength (nT)</b>
	IGRF2010	6/13/2011	10.36	65.67	52,209

<b>Design</b>	DD			
<b>Audit Notes:</b>				
<b>Version:</b>	1.0	<b>Phase:</b>	ACTUAL	<b>Tie On Depth:</b> 0.0
<b>Vertical Section:</b>	<b>Depth From (TVD) (ft)</b>	<b>+N/-S (ft)</b>	<b>+E/-W (ft)</b>	<b>Direction (°)</b>
	0.0	0.0	0.0	53.21

<b>Survey Program</b>	<b>Date</b>	6/23/2011		
<b>From (ft)</b>	<b>To (ft)</b>	<b>Survey (Wellbore)</b>	<b>Tool Name</b>	<b>Description</b>
94.0	6,760.0	Survey #1 (DD)	Gyro	Gyro

<b>Survey</b>									
<b>Measured Depth (ft)</b>	<b>Inclination (°)</b>	<b>Azimuth (°)</b>	<b>Vertical Depth (ft)</b>	<b>+N/-S (ft)</b>	<b>+E/-W (ft)</b>	<b>Vertical Section (ft)</b>	<b>Dogleg Rate (°/100ft)</b>	<b>Build Rate (°/100ft)</b>	<b>Formations / Comments</b>
0.0	0.00	0.00	0.0	0.0	0.0	0.0	0.00	0.00	
94.0	0.43	58.20	94.0	0.2	0.3	0.4	0.46	0.46	
124.0	0.59	34.22	124.0	0.4	0.5	0.6	0.88	0.53	
154.0	0.82	45.76	154.0	0.7	0.7	1.0	0.90	0.77	
196.0	2.15	52.03	196.0	1.3	1.6	2.1	3.19	3.17	
227.0	3.21	48.36	226.9	2.3	2.7	3.5	3.46	3.42	
258.0	4.35	49.18	257.9	3.6	4.2	5.5	3.68	3.68	
288.0	5.47	49.15	287.8	5.3	6.1	8.1	3.73	3.73	
319.0	6.42	49.43	318.6	7.4	8.6	11.3	3.07	3.06	
350.0	7.43	49.70	349.4	9.8	11.4	15.0	3.26	3.26	
381.0	8.50	50.52	380.1	12.6	14.7	19.3	3.47	3.45	
412.0	9.47	52.30	410.7	15.6	18.5	24.2	3.25	3.13	
443.0	10.43	53.61	441.2	18.8	22.8	29.5	3.18	3.10	

## Survey Report

<b>Company:</b>	EnCana Oil & Gas (USA) Inc	<b>Local Co-ordinate Reference:</b>	Well Daybreak Federal 19-8D (PJ-19) Directional
<b>Project:</b>	S. Piceance (Parachute)	<b>TVD Reference:</b>	KBE @ 5449.0ft (Original Well Elev)
<b>Site:</b>	NWSE S19-T7S-R95W (PJ-19 Pad)	<b>MD Reference:</b>	KBE @ 5449.0ft (Original Well Elev)
<b>Well:</b>	Daybreak Federal 19-8D (PJ-19) Directional	<b>North Reference:</b>	True
<b>Wellbore:</b>	Open 3.31.2011	<b>Survey Calculation Method:</b>	Minimum Curvature
<b>Design:</b>	DD	<b>Database:</b>	USA EDM 5000 Multi Users DB

Survey									
Measured Depth (ft)	Inclination (°)	Azimuth (°)	Vertical Depth (ft)	+N/-S (ft)	+E/-W (ft)	Vertical Section (ft)	Dogleg Rate (°/100ft)	Build Rate (°/100ft)	Formations / Comments
474.0	11.46	54.84	471.7	22.3	27.6	35.4	3.41	3.32	
505.0	12.78	53.49	502.0	26.1	32.8	41.9	4.35	4.26	
535.0	13.40	53.46	531.2	30.1	38.3	48.7	2.07	2.07	
565.0	14.38	54.95	560.3	34.3	44.1	55.9	3.48	3.27	
601.0	15.75	56.08	595.1	39.6	51.9	65.3	3.89	3.81	
631.0	16.47	56.24	623.9	44.2	58.8	73.6	2.40	2.40	
661.0	17.45	55.52	652.6	49.2	66.0	82.3	3.34	3.27	
692.0	18.69	55.15	682.1	54.6	73.9	91.9	4.02	4.00	
722.0	19.50	54.51	710.4	60.3	81.9	101.7	2.79	2.70	
752.0	20.38	56.10	738.6	66.1	90.4	111.9	3.45	2.93	
783.0	21.80	55.38	767.5	72.4	99.6	123.1	4.66	4.58	
813.0	22.54	55.26	795.3	78.8	108.9	134.4	2.47	2.47	
843.0	23.26	56.13	823.0	85.4	118.5	146.1	2.65	2.40	
865.0	23.95	55.80	843.1	90.3	125.8	154.9	3.19	3.14	
896.0	24.70	56.59	871.4	97.4	136.4	167.6	2.64	2.42	
927.0	25.75	54.22	899.4	104.9	147.3	180.8	4.70	3.39	
957.0	26.81	54.48	926.3	112.7	158.1	194.1	3.55	3.53	
988.0	27.11	54.83	953.9	120.8	169.6	208.1	1.09	0.97	
1,049.0	26.81	55.27	1,008.3	136.7	192.2	235.8	0.59	-0.49	
1,142.0	27.77	52.02	1,091.0	161.9	226.5	278.4	1.91	1.03	
1,180.0	27.95	51.23	1,124.6	173.0	240.5	296.2	1.08	0.47	
1,278.0	26.76	53.25	1,211.6	200.5	276.1	341.2	1.54	-1.21	
1,374.0	27.25	54.66	1,297.1	226.2	311.3	384.8	0.84	0.51	
1,469.0	26.59	55.45	1,381.8	250.8	346.6	427.8	0.79	-0.69	
1,564.0	27.95	56.41	1,466.3	275.2	382.6	471.2	1.50	1.43	
1,659.0	31.95	56.24	1,548.6	301.5	422.1	518.6	4.21	4.21	
1,754.0	34.98	57.38	1,627.8	330.2	465.9	570.8	3.26	3.19	
1,849.0	35.02	52.46	1,705.6	361.5	510.5	625.3	2.97	0.04	
1,945.0	34.54	49.91	1,784.5	395.8	553.1	680.0	1.60	-0.50	
2,040.0	33.31	48.77	1,863.3	430.3	593.4	732.9	1.46	-1.29	
2,135.0	32.74	47.36	1,943.0	464.9	631.9	784.5	1.01	-0.60	
2,230.0	34.01	52.02	2,022.3	498.7	671.7	836.6	3.01	1.34	
2,325.0	34.76	52.90	2,100.7	531.3	714.3	890.2	0.95	0.79	
2,421.0	35.42	52.28	2,179.3	564.9	758.1	945.4	0.78	0.69	
2,516.0	35.64	50.79	2,256.6	599.2	801.3	1,000.6	0.94	0.23	
2,611.0	35.46	50.35	2,333.9	634.3	844.0	1,055.8	0.33	-0.19	
2,706.0	34.50	51.58	2,411.7	668.6	886.3	1,110.2	1.25	-1.01	
2,801.0	34.94	51.49	2,489.8	702.3	928.7	1,164.3	0.47	0.46	
2,896.0	34.67	50.53	2,567.8	736.4	970.8	1,218.4	0.64	-0.28	
2,990.0	35.11	52.99	2,644.9	769.6	1,013.0	1,272.2	1.57	0.47	
3,086.0	34.72	51.76	2,723.6	803.2	1,056.5	1,327.1	0.84	-0.41	
3,181.0	34.98	54.66	2,801.6	835.7	1,100.0	1,381.4	1.77	0.27	
3,276.0	34.54	53.51	2,879.7	867.4	1,143.9	1,435.6	0.83	-0.46	
3,371.0	34.37	53.16	2,958.0	899.5	1,187.0	1,489.3	0.27	-0.18	
3,466.0	33.22	52.99	3,036.9	931.3	1,229.2	1,542.1	1.21	-1.21	
3,561.0	31.99	51.54	3,117.0	962.6	1,269.7	1,593.3	1.53	-1.29	
3,656.0	30.06	51.23	3,198.4	993.2	1,308.0	1,642.3	2.04	-2.03	
3,751.0	27.47	52.72	3,281.6	1,021.3	1,344.0	1,688.0	2.83	-2.73	
3,847.0	24.96	53.07	3,367.8	1,046.9	1,377.8	1,730.4	2.62	-2.61	
3,942.0	24.48	52.81	3,454.1	1,070.9	1,409.5	1,770.1	0.52	-0.51	
4,037.0	22.30	53.51	3,541.2	1,093.5	1,439.7	1,807.8	2.31	-2.29	
4,132.0	20.04	52.55	3,629.8	1,114.1	1,467.1	1,842.1	2.41	-2.38	
4,228.0	19.16	52.90	3,720.3	1,133.6	1,492.7	1,874.3	0.92	-0.92	

## Survey Report

<b>Company:</b>	EnCana Oil & Gas (USA) Inc	<b>Local Co-ordinate Reference:</b>	Well Daybreak Federal 19-8D (PJ-19) Directional
<b>Project:</b>	S. Piceance (Parachute)	<b>TVD Reference:</b>	KBE @ 5449.0ft (Original Well Elev)
<b>Site:</b>	NWSE S19-T7S-R95W (PJ-19 Pad)	<b>MD Reference:</b>	KBE @ 5449.0ft (Original Well Elev)
<b>Well:</b>	Daybreak Federal 19-8D (PJ-19) Directional	<b>North Reference:</b>	True
<b>Wellbore:</b>	Open 3.31.2011	<b>Survey Calculation Method:</b>	Minimum Curvature
<b>Design:</b>	DD	<b>Database:</b>	USA EDM 5000 Multi Users DB

### Survey

Measured Depth (ft)	Inclination (°)	Azimuth (°)	Vertical Depth (ft)	+N/-S (ft)	+E/-W (ft)	Vertical Section (ft)	Dogleg Rate (°/100ft)	Build Rate (°/100ft)	Formations / Comments
4,323.0	17.89	51.93	3,810.3	1,152.0	1,516.6	1,904.5	1.38	-1.34	
4,418.0	16.96	54.74	3,901.0	1,169.0	1,539.4	1,932.9	1.32	-0.98	
4,513.0	16.17	56.85	3,992.0	1,184.2	1,561.8	1,960.0	1.05	-0.83	
4,609.0	15.56	57.65	4,084.4	1,198.4	1,583.9	1,986.2	0.68	-0.64	
4,703.0	13.05	51.67	4,175.5	1,211.8	1,602.9	2,009.3	3.10	-2.67	
4,798.0	10.68	50.09	4,268.4	1,224.1	1,618.0	2,028.9	2.52	-2.49	
4,894.0	8.61	54.31	4,363.1	1,234.0	1,630.7	2,044.9	2.28	-2.16	
4,989.0	5.71	56.77	4,457.3	1,240.7	1,640.4	2,056.7	3.07	-3.05	
5,084.0	5.19	62.30	4,551.9	1,245.3	1,648.2	2,065.7	0.78	-0.55	
5,179.0	4.04	75.14	4,646.6	1,248.1	1,655.2	2,073.1	1.62	-1.21	
5,275.0	3.38	77.24	4,742.4	1,249.6	1,661.3	2,078.8	0.70	-0.69	
5,370.0	2.86	77.77	4,837.2	1,250.8	1,666.3	2,083.5	0.55	-0.55	
5,465.0	1.14	296.97	4,932.2	1,251.7	1,667.8	2,085.2	4.01	-1.81	
5,561.0	1.76	273.42	5,028.2	1,252.2	1,665.5	2,083.7	0.88	0.65	
5,656.0	2.11	265.95	5,123.1	1,252.2	1,662.3	2,081.1	0.45	0.37	
5,753.0	2.42	209.17	5,220.1	1,250.3	1,659.5	2,077.7	2.24	0.32	
5,848.0	0.75	180.60	5,315.0	1,247.9	1,658.5	2,075.5	1.89	-1.76	
5,943.0	3.30	5.00	5,410.0	1,250.0	1,658.7	2,077.0	4.26	2.68	
6,038.0	4.66	11.06	5,504.7	1,256.5	1,659.7	2,081.6	1.50	1.43	
6,133.0	0.97	239.93	5,599.6	1,259.9	1,659.7	2,083.7	5.63	-3.88	
6,228.0	1.19	243.71	5,694.6	1,259.0	1,658.2	2,081.9	0.24	0.23	
6,324.0	2.07	250.30	5,790.6	1,258.0	1,655.6	2,079.3	0.94	0.92	
6,419.0	1.98	239.75	5,885.5	1,256.6	1,652.6	2,076.0	0.40	-0.09	
6,514.0	0.53	141.23	5,980.5	1,255.4	1,651.5	2,074.4	2.24	-1.53	
6,610.0	0.35	205.67	6,076.5	1,254.8	1,651.6	2,074.2	0.51	-0.19	
6,710.0	0.40	190.89	6,176.5	1,254.2	1,651.4	2,073.6	0.11	0.05	Last Cathedral Survey @ 6,710' MD
6,760.0	0.40	190.89	6,226.5	1,253.9	1,651.3	2,073.4	0.00	0.00	Projection to Bit @ 6,760' MD

## Survey Report

<b>Company:</b>	EnCana Oil & Gas (USA) Inc	<b>Local Co-ordinate Reference:</b>	Well Daybreak Federal 19-8D (PJ-19) Directional
<b>Project:</b>	S. Piceance (Parachute)	<b>TVD Reference:</b>	KBE @ 5449.0ft (Original Well Elev)
<b>Site:</b>	NWSE S19-T7S-R95W (PJ-19 Pad)	<b>MD Reference:</b>	KBE @ 5449.0ft (Original Well Elev)
<b>Well:</b>	Daybreak Federal 19-8D (PJ-19) Directional	<b>North Reference:</b>	True
<b>Wellbore:</b>	Open 3.31.2011	<b>Survey Calculation Method:</b>	Minimum Curvature
<b>Design:</b>	DD	<b>Database:</b>	USA EDM 5000 Multi Users DB

Targets									
Target Name									
- hit/miss target	Dip Angle	Dip Dir.	TVD	+N/-S	+E/-W	Northing	Easting	Latitude	Longitude
- Shape	(°)	(°)	(ft)	(ft)	(ft)	(ft)	(ft)		
Interp @ 800.0 (Daybreak) - survey misses target center by 36.7ft at 803.1ft MD (786.1 TVD, 76.7 N, 105.8 E) - Point	0.00	0.00	800.0	57.9	77.4	1,588,426.12	2,283,076.44	39.421489	-108.038136
Interp @ 1067.1 (Daybreak) - survey misses target center by 51.7ft at 1088.5ft MD (1043.5 TVD, 147.1 N, 206.9 E) - Point	0.00	0.00	1,067.1	124.7	166.7	1,588,490.36	2,283,167.55	39.421672	-108.037820
Interp @ 1070.1 (Daybreak) - survey misses target center by 61.6ft at 1086.8ft MD (1042.0 TVD, 146.6 N, 206.2 E) - Point	0.00	0.00	1,070.1	118.9	159.0	1,588,484.80	2,283,159.67	39.421656	-108.037847
Daybreak Federal 19-8C - survey misses target center by 15.5ft at 6709.5ft MD (6176.1 TVD, 1254.2 N, 1651.4 E) - Circle (radius 25.0)	0.00	0.00	6,176.0	1,242.1	1,661.0	1,589,565.62	2,284,692.50	39.424740	-108.032530
Daybreak Federal 19-8C - survey misses target center by 15.9ft at 5047.2ft MD (4515.2 TVD, 1243.7 N, 1645.2 E) - Point	0.00	0.00	4,514.0	1,242.1	1,661.0	1,589,565.62	2,284,692.50	39.424740	-108.032530

Survey Annotations					
Measured Depth	Vertical Depth	Local Coordinates			
(ft)	(ft)	+N/-S (ft)	+E/-W (ft)	Comment	
6,710.0	6,176.5	1,254.2	1,651.4	Last Cathedral Survey @ 6,710' MD	
6,760.0	6,226.5	1,253.9	1,651.3	Projection to Bit @ 6,760' MD	

Checked By: _____	Approved By: _____	Date: _____
-------------------	--------------------	-------------