

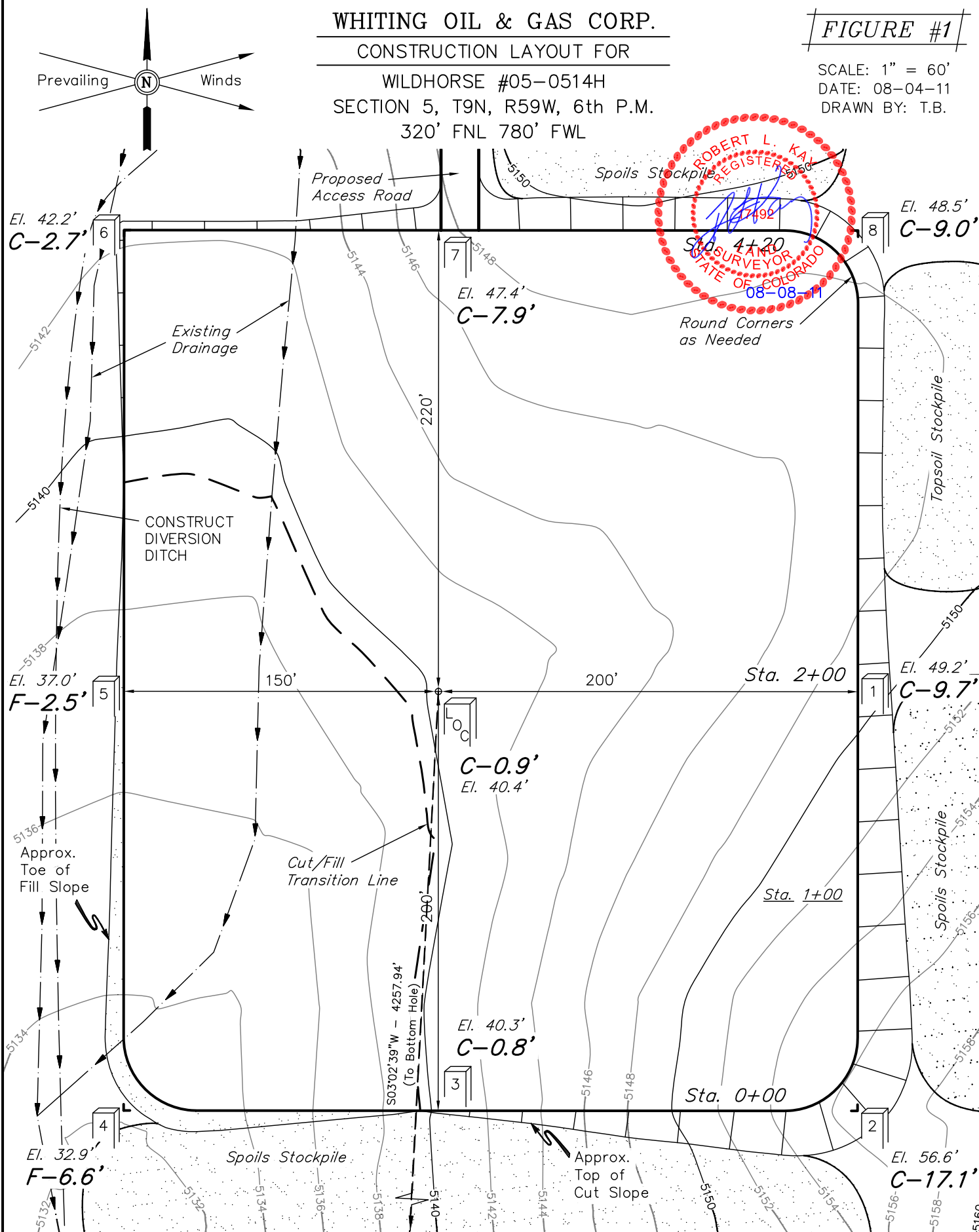
WHITING OIL & GAS CORP.

CONSTRUCTION LAYOUT FOR

WILDHORSE #05-0514H
SECTION 5, T9N, R59W, 6th P.M.
320' FNL 780' FWL

FIGURE #1

SCALE: 1" = 60'
DATE: 08-04-11
DRAWN BY: T.B.



Elev. Ungraded Ground At Loc. Stake = 5140.4'
FINISHED GRADE ELEV. AT LOC. STAKE = 5139.5'

UINTAH ENGINEERING & LAND SURVEYING
85 So. 200 East * Vernal, Utah 84078 * (435) 789-1017