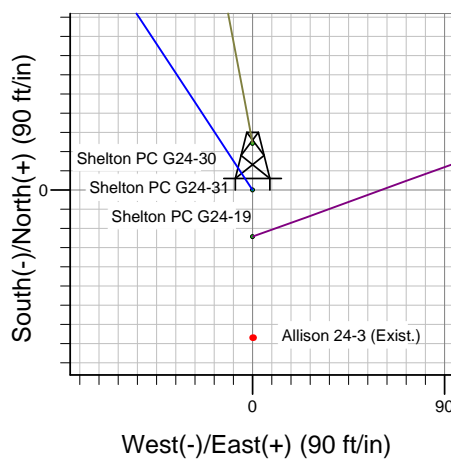
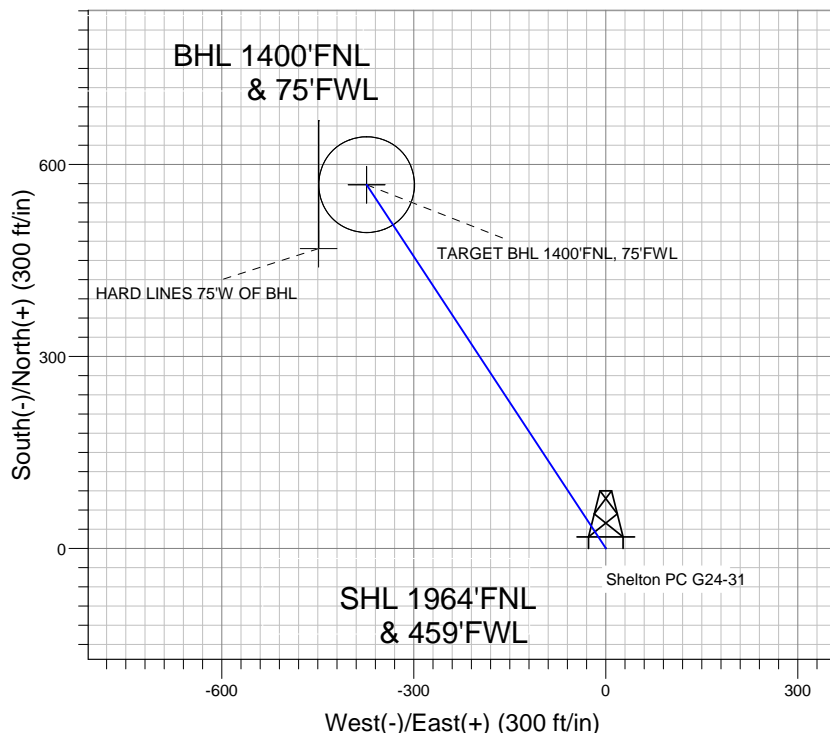
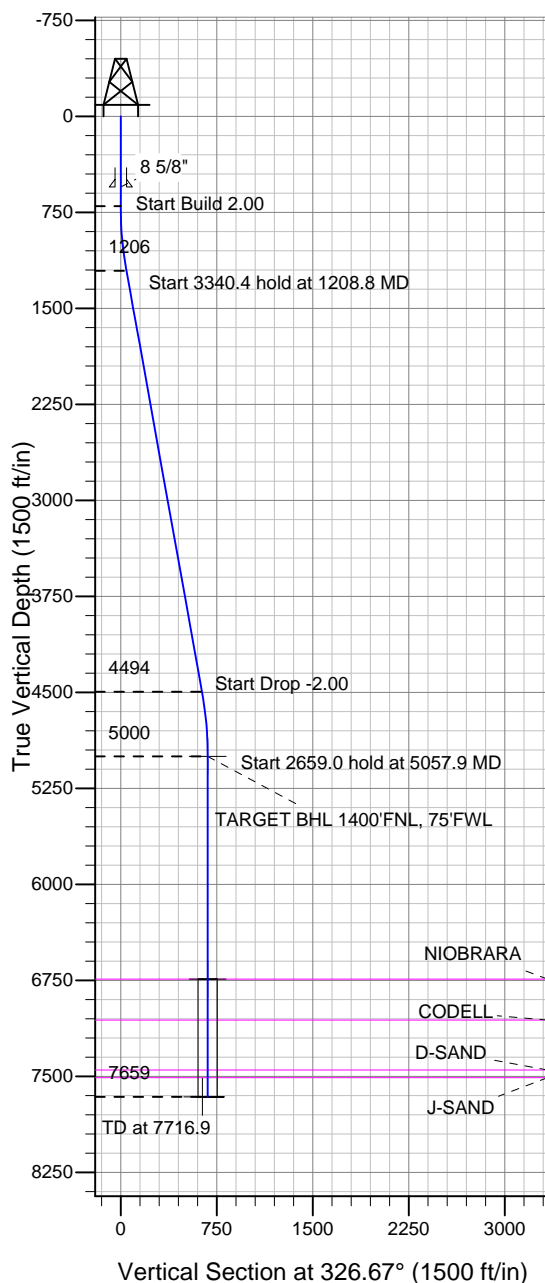


Well Name: Shelton PC G24-31

Surface Location: Shelton PC G24-30 Pad Sec.24-T4N-R65W
 North American Datum 1983 , US State Plane 1983 , Colorado Northern Zone
 Ground Elevation: 4746.0

+N/-S	+E/-W	Northing	Easting	Latitude	Longitude	Slot
0.0	0.0	1353285.49	3245656.44	40.299820	-104.619250	
Original Well Elev WELL @ 4759.0ft (Original Well Elev)						

NOBLE ENERGY INC WELD COUNTY CO



Shelton PC G24-30 Pad Sec.24-T4N-R65W
 Shelton PC G24-31
 Noble Shelton PC G24-31 Plan #1 (11-09-11)
 14:02, November 09 2011



Azimuths to True North
 Magnetic North: 8.72°
 Magnetic Field
 Strength: 53052.7snT
 Dip Angle: 66.98°
 Date: 11/9/2011
 Model: IGRF2010

WELLBORE TARGET DETAILS (LAT/LONG)

Name	TVD	+N/-S	+E/-W	Latitude	Longitude	Shape
TARGET BHL 1400'FNL, 75'FWL	5000.0	568.3	-373.8	40.301380	-104.620590	Point
TARGET CIRCLE 1400'FNL & 75'FWL	6739.0	568.3	-373.8	40.301380	-104.620590	Circle (Radius: 75.0)
HARD LINES 75'W OF BHL	7659.0	468.3	-448.8	40.301105	-104.620859	Polygon

SECTION DETAILS

Sec	MD	Inc	Azi	TVD	+N/-S	+E/-W	DLeg	TFace	VSec	Target
1	0.0	0.00	0.00	0.0	0.0	0.0	0.00	0.00	0.0	
2	700.0	0.00	0.00	700.0	0.0	0.0	0.00	0.00	0.0	
3	1208.8	10.18	326.67	1206.1	37.6	-24.8	2.00	326.67	45.1	
4	4549.1	10.18	326.67	4493.9	530.7	-349.0	0.00	0.00	635.2	
5	5057.9	0.00	0.00	5000.0	568.3	-373.8	2.00	180.00	680.2	TARGET BHL 1400'FNL, 75'FWL
6	7716.9	0.00	0.00	7659.0	568.3	-373.8	0.00	0.00	680.2	