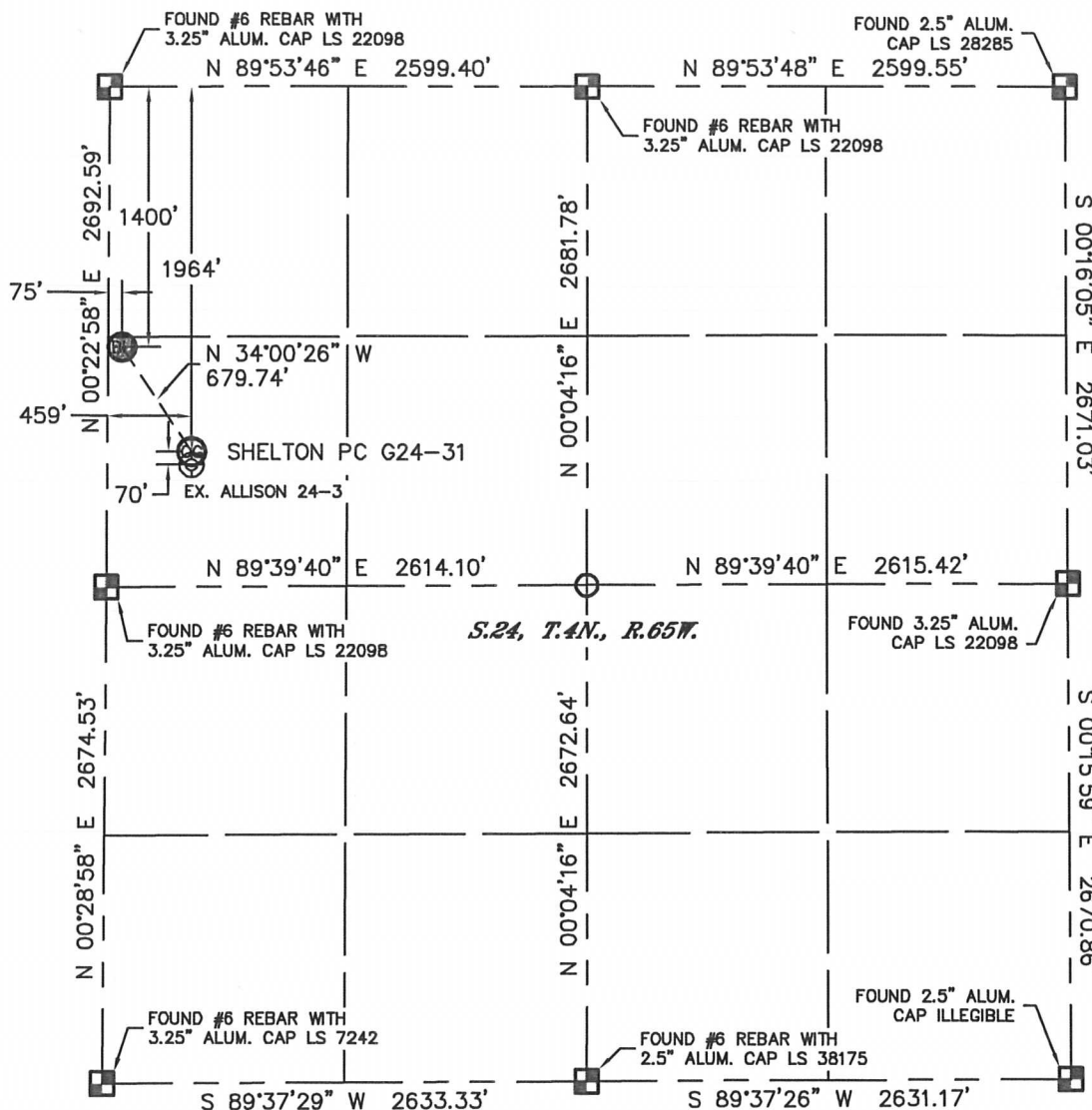


# WELL LOCATION CERTIFICATE

THIS MAP DOES NOT REPRESENT A BOUNDARY SURVEY

SECTION: 24  
TOWNSHIP: 4N  
RANGE: 65W



In accordance with a request from Ryan Hawkins with Noble Energy Inc.

Lat40°, Inc. has determined the surface location of the SHELTON PC G24-31 to be 1964' from the NORTH line and 459' from the WEST line and the bottom hole to be 1400' from the NORTH line and 75' from the WEST line as measured at right angles from the section lines of Section 24, Township 4 North, Range 65 West of the Sixth Principal Meridian, County of Weld, State of Colorado.

I hereby state that this Well Location Certificate was prepared by me, or under my direct supervision, that the fieldwork was completed on 10/19/2011 for and on behalf of Noble Energy Inc. That this is not a Land Survey Plat or an Improvement Survey Plat, and that it is not to be relied upon for establishment of fence, building, or other future improvement lines.

## NOTE:

- 1) Bearings shown are Grid Bearings of the Colorado State Plane Coordinate System, North Zone, North American Datum 1983/2007. The lineal dimensions as contained herein are based upon the "U.S. Survey Foot."
- 2) Ground elevations are based on an observed GPS elevation (NAVD 1988 DATUM).
- 3) NEAREST EXISTING WELL: ALLISON 24-3, 70'
- 4) IMPROVEMENTS: See LOCATION DRAWING for all visible Improvements within 400' of disturbed area.
- 5) SURFACE USE: RANGELAND, EXISTING WELL SITE
- 6) INSTRUMENT OPERATOR: ADAM KELLY

## NOTE

According to Colorado law, you must commence any legal action based upon any defect in this W.L.C. within three years after you discover such defect. In no event, may any action based upon any defect in this survey be commenced more than ten years after the date of the certificate shown hereon. (13-80-105 C.R.S.)

## LEGEND

- = ALIQUOT MONUMENT AS DESCRIBED
- = CALCULATED POSITION

SURFACE LOCATION  
LATITUDE: 40.29982°N  
LONGITUDE: 104.61925°W  
PDOP: 1.9  
ELEV: 4746'  
1/4, 1/4: SW1/4NW1/4  
NEAREST PROPERTY LINE: 459' W

BOTTOM HOLE  
LATITUDE: 40.30138°N  
LONGITUDE: 104.62059°W



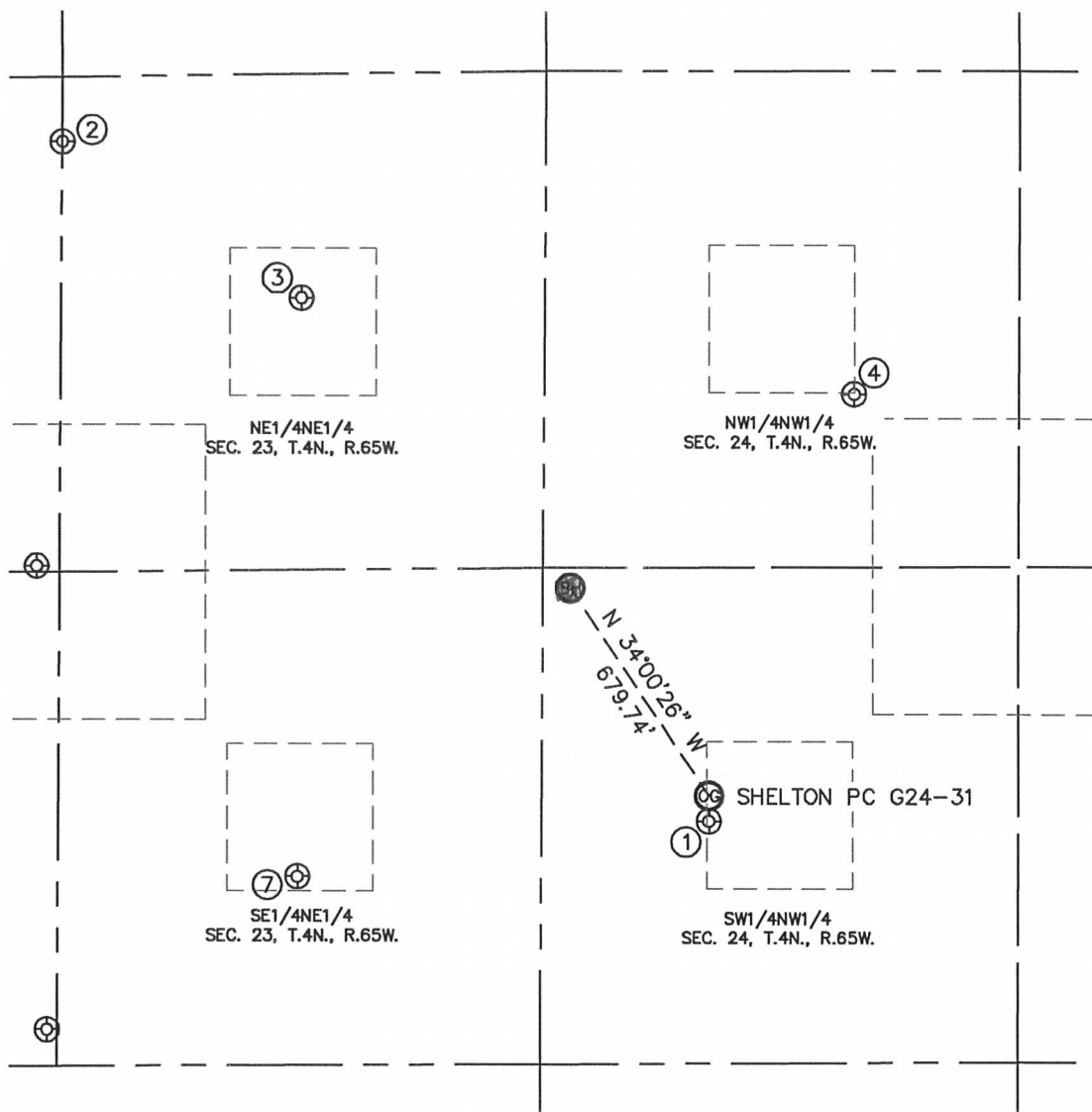
Brian T. Brinkman—On behalf of Lat40°, Inc.  
Colorado Licensed Professional Land Surveyor No. 38175

PROJECT#: 2011304

# SITE SKETCH

SHELTON PC G24-31

SECTION: 24  
TOWNSHIP: 4N  
RANGE: 65W



①

ALLISON 24-3  
SW1/4NW1/4  
2034' FNL  
459' FWL  
LAT-40.29963°N  
LONG-104.61925°W  
PDOP: 1.5  
ELEV: 4747'

②

SHELTON G23-27  
NE1/4NE1/4  
175' FNL  
1325' FEL  
LAT-40.30473°N  
LONG-104.62554°W  
PDOP: 5.2  
ELEV: 4715'

③

ARENS 23-1G  
NE1/4NE1/4  
606' FNL  
668' FEL  
LAT-40.30355°N  
LONG-104.62321°W  
PDOP: 2.7  
ELEV: 4724'

④

API 24-22  
NW1/4NW1/4  
875' FNL  
851' FWL  
LAT-40.30280°N  
LONG-104.61778°W  
PDOP: 3.8  
ELEV: 4762'

⑦

ARENS 23-8G  
SE1/4NE1/4  
2174' FNL  
668' FEL  
LAT-40.29925°N  
LONG-104.62330°W  
PDOP: 2.4  
ELEV: 4722'

