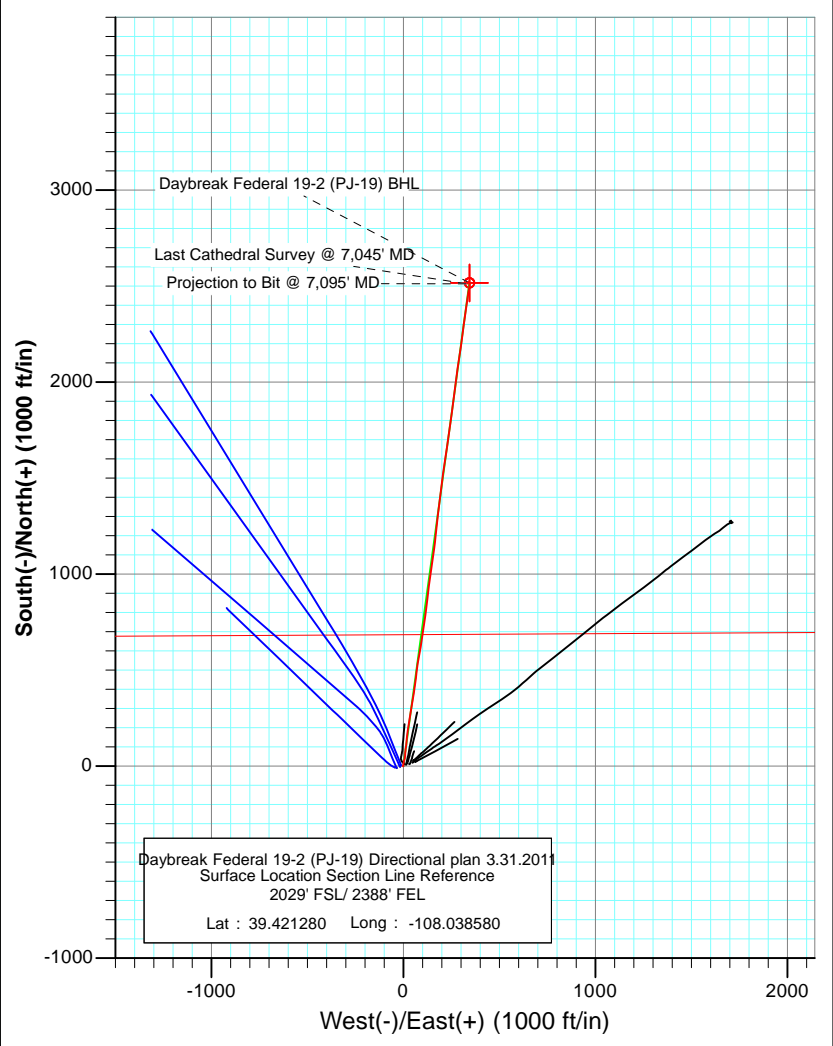
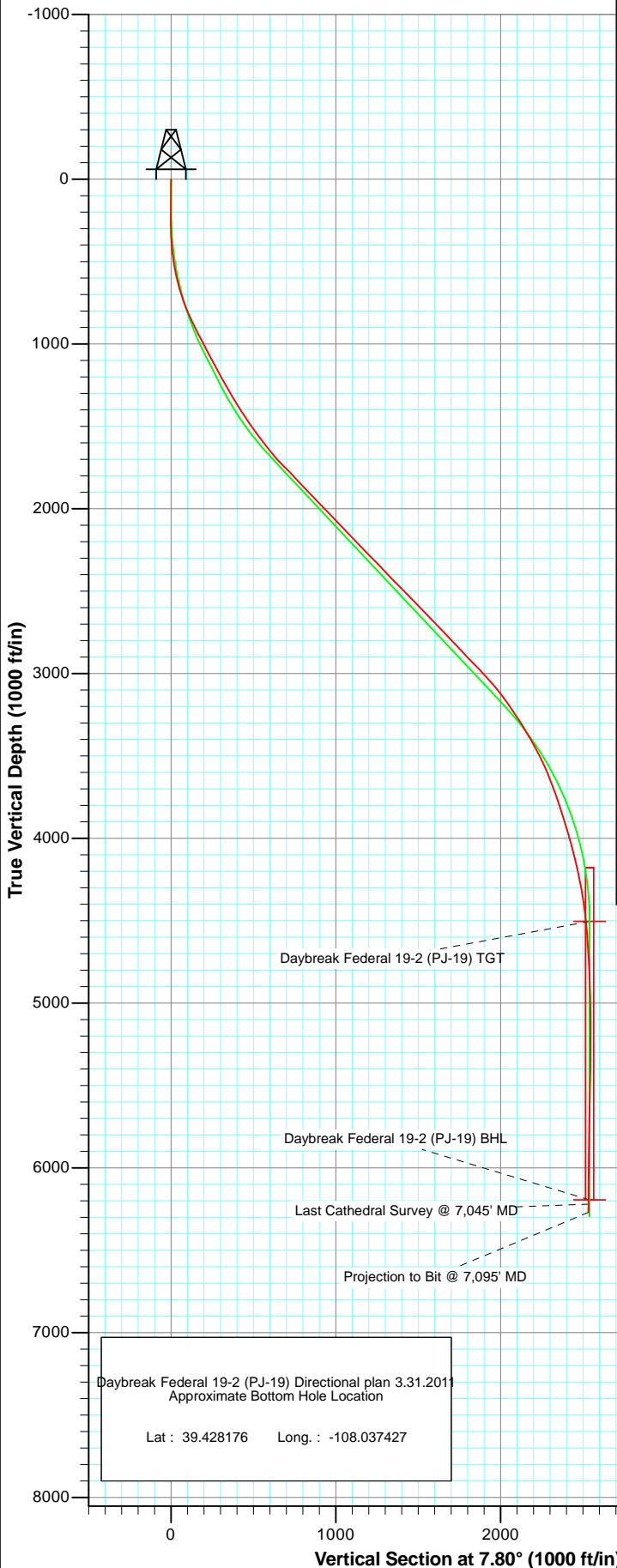




Project: S. Piceance (Parachute)
 Site: NWSE S19-T7S-R95W (PJ-19 Pad)
 Well: Daybreak Federal 19-2 (PJ-19) Directional plan 3.31.2011
 Wellbore: DD
 Plan: FINAL

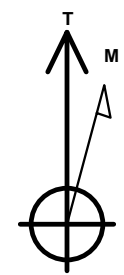


Daybreak Federal 19-2 (PJ-19) TGT

Daybreak Federal 19-2 (PJ-19) BHL

Last Cathedral Survey @ 7,045' MD

Projection to Bit @ 7,095' MD



Azimuths to True North
 Magnetic North: 10.34°

Magnetic Field
 Strength: 52191.5nT
 Dip Angle: 65.67°
 Date: 8/14/2011
 Model: IGRF2010

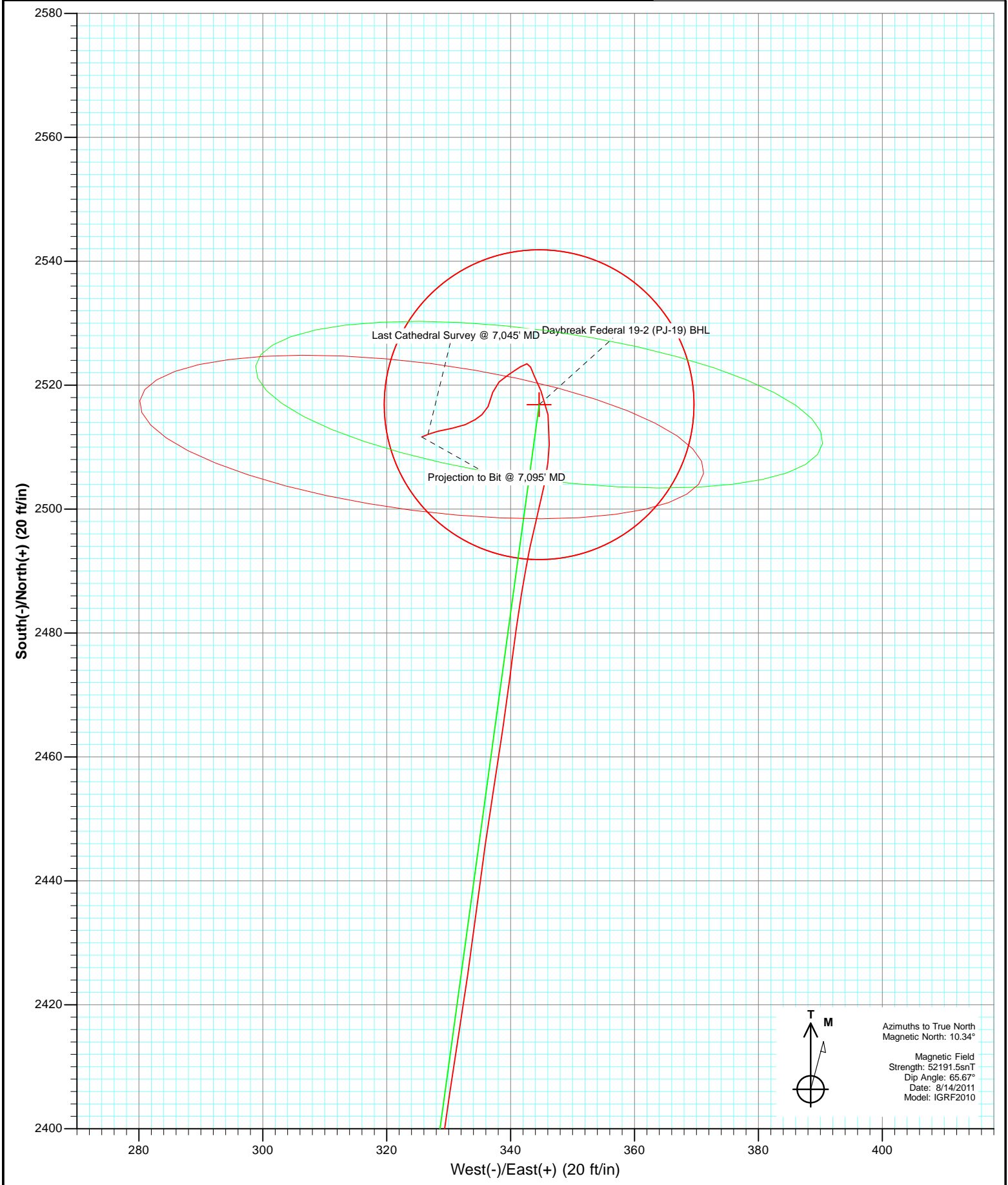
DESIGN DETAILS: DD

Job# 115267 (SH), 115332 (MH); BH
 KBE @ 5449.0ft (Original Well Elev)

Target	Azimuth	Origin Type	N/S	E/W
Daybreak Federal 19-2 (PJ-19) BHL	7.80	Slot	0.0	0.0

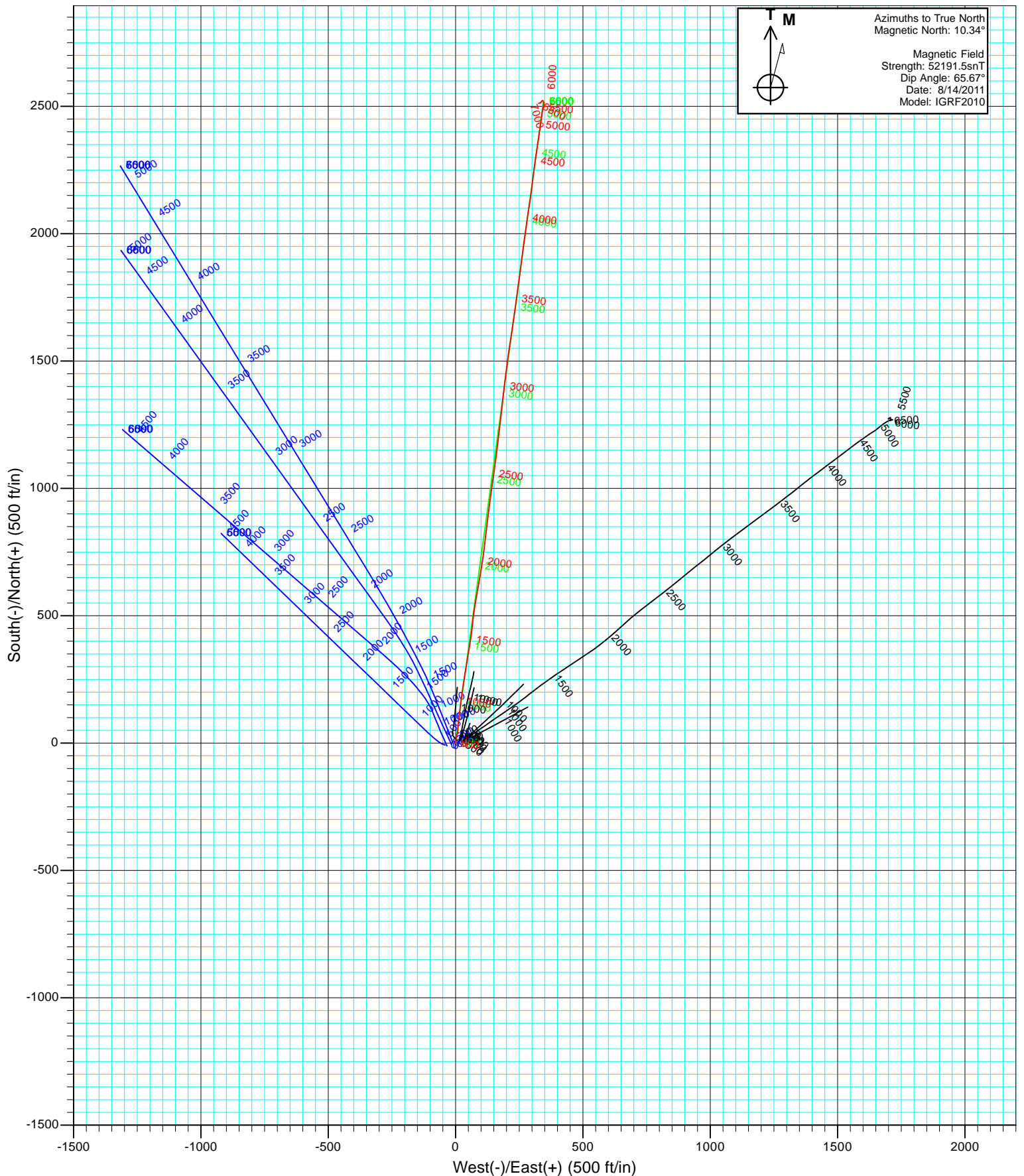


Project: S. Piceance (Parachute)
Site: NWSE S19-T7S-R95W (PJ-19 Pad)
Well: Daybreak Federal 19-2 (PJ-19) Directional plan 3.31.2011
Wellbore: DD
Plan: FINAL





Project: S. Piceance (Parachute)
Site: NWSE S19-T7S-R95W (PJ-19 Pad)
Well: Daybreak Federal 19-2 (PJ-19) Directional plan 3.31.2011
Wellbore: DD
Design: FINAL



Cathedral Energy Services

Survey Report

Company: EnCana Oil & Gas (USA) Inc	Local Co-ordinate Reference: Well Daybreak Federal 19-2 (PJ-19) Directional pl
Project: S. Piceance (Parachute)	TVD Reference: KBE @ 5449.0ft (Original Well Elev)
Site: NWSE S19-T7S-R95W (PJ-19 Pad)	MD Reference: KBE @ 5449.0ft (Original Well Elev)
Well: Daybreak Federal 19-2 (PJ-19) Directional plan	North Reference: True
Wellbore: DD1.2011	Survey Calculation Method: Minimum Curvature
Design: DD	Database: USA EDM 5000 Multi Users DB

Project S. Piceance (Parachute), Garfield County, CO		
Map System: US State Plane 1983	System Datum:	Mean Sea Level
Geo Datum: North American Datum 1983		
Map Zone: Colorado Central Zone		

Site NWSE S19-T7S-R95W (PJ-19 Pad)				
Site Position:	Northing:	1,588,373.67 ft	Latitude:	39.421340
From: Lat/Long	Easting:	2,283,011.65 ft	Longitude:	-108.038360
Position Uncertainty: 0.0 ft	Slot Radius:	13.200 in	Grid Convergence:	-1.60 °

Well Daybreak Federal 19-2 (PJ-19) Directional plan 3.31.2011				
Well Position	+N/-S	0.0 ft	Northing:	1,588,353.55 ft
	+E/-W	0.0 ft	Easting:	2,282,948.91 ft
Position Uncertainty		0.0 ft	Wellhead Elevation:	ft
			Latitude:	39.421280
			Longitude:	-108.038580
			Ground Level:	5,427.0 ft

Wellbore DD					
Magnetics	Model Name	Sample Date	Declination (°)	Dip Angle (°)	Field Strength (nT)
	IGRF2010	8/14/2011	10.34	65.67	52,192

Design DD				
Audit Notes:				
Version:	1.0	Phase:	ACTUAL	Tie On Depth: 0.0
Vertical Section:	Depth From (TVD) (ft)	+N/-S (ft)	+E/-W (ft)	Direction (°)
	0.0	0.0	0.0	7.80

Survey Program		Date 8/25/2011
From (ft)	To (ft)	Survey (Wellbore)
169.0	7,095.0	Survey #1 (DD)
		Tool Name MWD
		Description Geolink MWD

Measured Depth (ft)	Inclination (°)	Azimuth (°)	Vertical Depth (ft)	+N/-S (ft)	+E/-W (ft)	Vertical Section (ft)	Dogleg Rate (°/100ft)	Build Rate (°/100ft)	Formations / Comments
0.0	0.00	0.00	0.0	0.0	0.0	0.0	0.00	0.00	
169.0	0.40	236.20	169.0	-0.3	-0.5	-0.4	0.24	0.24	
200.0	0.50	255.30	200.0	-0.4	-0.7	-0.5	0.58	0.32	
231.0	0.40	236.90	231.0	-0.5	-0.9	-0.6	0.56	-0.32	
262.0	0.50	301.30	262.0	-0.5	-1.1	-0.7	1.57	0.32	
293.0	0.70	6.70	293.0	-0.2	-1.2	-0.4	2.16	0.65	
324.0	1.40	11.90	324.0	0.3	-1.1	0.2	2.28	2.26	
354.0	2.50	3.70	354.0	1.3	-1.0	1.2	3.77	3.67	
385.0	3.60	6.40	384.9	3.0	-0.9	2.8	3.58	3.55	
416.0	4.80	10.50	415.8	5.2	-0.5	5.1	3.99	3.87	
447.0	6.20	14.70	446.7	8.1	0.1	8.0	4.70	4.52	
478.0	7.60	9.70	477.5	11.7	0.9	11.8	4.91	4.52	
508.0	9.00	11.20	507.2	16.0	1.7	16.1	4.72	4.67	

Cathedral Energy Services

Survey Report

Company:	EnCana Oil & Gas (USA) Inc	Local Co-ordinate Reference:	Well Daybreak Federal 19-2 (PJ-19) Directional pl
Project:	S. Piceance (Parachute)	TD Reference:	KBE @ 5449.0ft (Original Well Elev)
Site:	NWSE S19-T7S-R95W (PJ-19 Pad)	MD Reference:	KBE @ 5449.0ft (Original Well Elev)
Well:	Daybreak Federal 19-2 (PJ-19) Directional plan	North Reference:	True
Wellbore:	DD1.2011	Survey Calculation Method:	Minimum Curvature
Design:	DD	Database:	USA EDM 5000 Multi Users DB

Survey									
Measured Depth (ft)	Inclination (°)	Azimuth (°)	Vertical Depth (ft)	+N/-S (ft)	+E/-W (ft)	Vertical Section (ft)	Dogleg Rate (°/100ft)	Build Rate (°/100ft)	Formations / Comments
539.0	10.50	10.70	537.7	21.2	2.7	21.3	4.85	4.84	
570.0	11.80	13.30	568.1	27.0	4.0	27.3	4.50	4.19	
600.0	13.10	18.40	597.4	33.2	5.7	33.7	5.67	4.33	
692.0	17.40	1.20	686.2	56.9	9.3	57.6	6.74	4.67	
784.0	21.60	7.70	772.9	87.4	11.9	88.2	5.13	4.57	
877.0	25.30	5.80	858.2	124.2	16.2	125.2	4.06	3.98	
969.0	26.80	7.00	940.9	164.3	20.7	165.6	1.73	1.63	
1,061.0	28.10	9.40	1,022.5	206.3	26.8	208.0	1.86	1.41	
1,180.0	28.40	8.80	1,127.3	261.9	35.7	264.3	0.35	0.25	
1,257.0	28.34	7.97	1,195.1	298.1	41.0	300.9	0.52	-0.08	
1,352.0	30.06	9.81	1,278.0	343.9	48.2	347.3	2.04	1.81	
1,448.0	31.82	10.08	1,360.4	392.5	56.7	396.6	1.84	1.83	
1,543.0	33.35	6.21	1,440.4	443.1	63.9	447.7	2.72	1.61	
1,639.0	35.60	6.56	1,519.5	497.1	70.0	502.0	2.35	2.34	
1,735.0	37.53	9.72	1,596.7	553.7	78.1	559.2	2.81	2.01	
1,830.0	39.90	10.43	1,670.8	612.2	88.5	618.6	2.54	2.49	
1,926.0	44.56	8.67	1,741.8	675.8	99.2	683.0	5.01	4.85	
2,021.0	43.90	7.97	1,809.9	741.4	108.7	749.3	0.86	-0.69	
2,116.0	43.29	6.56	1,878.7	806.4	117.0	814.8	1.21	-0.64	
2,212.0	44.56	7.18	1,947.9	872.5	125.0	881.4	1.40	1.32	
2,308.0	43.20	7.35	2,017.1	938.5	133.4	947.9	1.42	-1.42	
2,403.0	44.30	7.79	2,085.7	1,003.6	142.1	1,013.6	1.20	1.16	
2,497.0	43.24	8.05	2,153.6	1,068.0	151.0	1,078.6	1.14	-1.13	
2,592.0	44.12	7.97	2,222.3	1,133.0	160.2	1,144.3	0.93	0.93	
2,687.0	44.69	6.21	2,290.1	1,199.0	168.4	1,210.7	1.43	0.60	
2,783.0	43.15	6.47	2,359.3	1,265.1	175.7	1,277.3	1.62	-1.60	
2,878.0	44.12	5.95	2,428.0	1,330.3	182.8	1,342.8	1.09	1.02	
2,973.0	44.87	7.97	2,495.8	1,396.4	190.9	1,409.4	1.69	0.79	
3,069.0	43.59	6.30	2,564.6	1,462.8	199.2	1,476.3	1.80	-1.33	
3,165.0	44.69	8.23	2,633.5	1,529.1	207.7	1,543.2	1.81	1.15	
3,260.0	43.33	9.20	2,701.8	1,594.4	217.7	1,609.2	1.60	-1.43	
3,355.0	44.30	7.53	2,770.4	1,659.4	227.2	1,674.9	1.59	1.02	
3,450.0	43.42	7.97	2,838.9	1,724.7	236.1	1,740.8	0.98	-0.93	
3,545.0	43.15	8.23	2,908.0	1,789.2	245.3	1,805.9	0.34	-0.28	
3,640.0	44.21	7.79	2,976.7	1,854.1	254.4	1,871.5	1.16	1.12	
3,736.0	41.09	7.26	3,047.3	1,918.6	263.0	1,936.5	3.27	-3.25	
3,831.0	38.54	6.91	3,120.3	1,979.0	270.5	1,997.4	2.69	-2.68	
3,926.0	34.63	8.14	3,196.6	2,035.1	277.8	2,054.0	4.19	-4.12	
4,022.0	32.56	8.67	3,276.5	2,087.6	285.6	2,107.1	2.18	-2.16	
4,117.0	31.03	8.41	3,357.3	2,137.1	293.0	2,157.1	1.62	-1.61	
4,213.0	29.18	7.44	3,440.3	2,184.8	299.7	2,205.3	1.99	-1.93	
4,308.0	25.40	7.26	3,524.7	2,228.0	305.3	2,248.8	3.98	-3.98	
4,403.0	22.24	7.62	3,611.6	2,266.0	310.2	2,287.2	3.33	-3.33	
4,498.0	20.26	7.53	3,700.2	2,300.2	314.8	2,321.6	2.08	-2.08	
4,593.0	17.84	9.64	3,789.9	2,330.8	319.4	2,352.6	2.65	-2.55	
4,689.0	17.84	8.23	3,881.3	2,359.9	323.9	2,382.0	0.45	0.00	
4,784.0	16.79	7.26	3,972.0	2,387.9	327.7	2,410.3	1.15	-1.11	
4,880.0	14.46	9.02	4,064.5	2,413.5	331.4	2,436.1	2.48	-2.43	
4,974.0	12.96	7.18	4,155.8	2,435.5	334.5	2,458.4	1.66	-1.60	
5,069.0	11.51	9.11	4,248.6	2,455.5	337.4	2,478.5	1.59	-1.53	
5,164.0	9.98	7.26	4,342.0	2,473.0	339.9	2,496.2	1.65	-1.61	
5,260.0	7.25	9.20	4,436.9	2,487.2	341.9	2,510.6	2.86	-2.84	
5,355.0	4.79	14.47	4,531.3	2,497.0	343.9	2,520.6	2.65	-2.59	

Cathedral Energy Services

Survey Report

Company:	EnCana Oil & Gas (USA) Inc	Local Co-ordinate Reference:	Well Daybreak Federal 19-2 (PJ-19) Directional pl
Project:	S. Piceance (Parachute)	TVD Reference:	KBE @ 5449.0ft (Original Well Elev)
Site:	NWSE S19-T7S-R95W (PJ-19 Pad)	MD Reference:	KBE @ 5449.0ft (Original Well Elev)
Well:	Daybreak Federal 19-2 (PJ-19) Directional plan	North Reference:	True
Wellbore:	DD1.2011	Survey Calculation Method:	Minimum Curvature
Design:	DD	Database:	USA EDM 5000 Multi Users DB

Survey									
Measured Depth (ft)	Inclination (°)	Azimuth (°)	Vertical Depth (ft)	+N/-S (ft)	+E/-W (ft)	Vertical Section (ft)	Dogleg Rate (°/100ft)	Build Rate (°/100ft)	Formations / Comments
5,451.0	4.17	10.69	4,627.1	2,504.3	345.5	2,528.0	0.71	-0.65	
5,547.0	3.25	1.90	4,722.9	2,510.5	346.3	2,534.2	1.12	-0.96	
5,642.0	2.55	351.80	4,817.7	2,515.2	346.0	2,538.9	0.91	-0.74	
5,737.0	2.33	334.22	4,912.6	2,519.1	344.9	2,542.6	0.82	-0.23	
5,832.0	0.88	340.90	5,007.6	2,521.5	343.8	2,544.8	1.54	-1.53	
5,927.0	1.01	334.04	5,102.6	2,522.9	343.2	2,546.2	0.18	0.14	
6,023.0	0.35	222.16	5,198.6	2,523.5	342.7	2,546.6	1.24	-0.69	
6,118.0	1.14	252.04	5,293.6	2,523.0	341.6	2,546.0	0.90	0.83	
6,213.0	1.49	223.39	5,388.6	2,521.8	339.8	2,544.6	0.77	0.37	
6,308.0	1.05	247.47	5,483.5	2,520.6	338.2	2,543.1	0.72	-0.46	
6,404.0	1.63	189.46	5,579.5	2,518.9	337.1	2,541.3	1.45	0.60	
6,500.0	1.32	208.27	5,675.5	2,516.5	336.4	2,538.9	0.59	-0.32	
6,595.0	0.70	233.85	5,770.5	2,515.2	335.4	2,537.5	0.79	-0.65	
6,691.0	0.92	235.34	5,866.5	2,514.5	334.3	2,536.6	0.23	0.23	
6,786.0	1.27	248.26	5,961.4	2,513.6	332.7	2,535.5	0.45	0.37	
6,881.0	1.32	261.00	6,056.4	2,513.1	330.6	2,534.7	0.31	0.05	
6,977.0	1.58	255.73	6,152.4	2,512.6	328.2	2,533.9	0.30	0.27	
7,045.0	1.23	247.38	6,220.3	2,512.1	326.7	2,533.2	0.59	-0.51	Last Cathedral Survey @ 7,045' MD
7,095.0	1.23	247.38	6,270.3	2,511.6	325.7	2,532.6	0.00	0.00	Projection to Bit @ 7,095' MD

Cathedral Energy Services

Survey Report

Company: EnCana Oil & Gas (USA) Inc	Local Co-ordinate Reference: Well Daybreak Federal 19-2 (PJ-19) Directional pl
Project: S. Piceance (Parachute)	TVD Reference: KBE @ 5449.0ft (Original Well Elev)
Site: NWSE S19-T7S-R95W (PJ-19 Pad)	MD Reference: KBE @ 5449.0ft (Original Well Elev)
Well: Daybreak Federal 19-2 (PJ-19) Directional plan	North Reference: True
Wellbore: 001.2011	Survey Calculation Method: Minimum Curvature
Design: DD	Database: USA EDM 5000 Multi Users DB

Targets									
Target Name	Dip Angle	Dip Dir.	TVD	+N/-S	+E/-W	Northing	Easting	Latitude	Longitude
- hit/miss target	(°)	(°)	(ft)	(ft)	(ft)	(ft)	(ft)		
- Shape									
Interp @ 1067.1 (Daybreak) - actual wellpath misses target center by 20.9ft at 1100.3ft MD (1057.2 TVD, 224.6 N, 29.8 E) - Point	0.00	0.00	1,067.1	206.2	28.2	1,588,558.92	2,282,982.90	39.421846	-108.038480
Interp @ 1061.6 (Daybreak) - actual wellpath misses target center by 56.3ft at 1075.1ft MD (1035.0 TVD, 212.9 N, 27.8 E) - Point	0.00	0.00	1,061.6	163.6	22.4	1,588,516.45	2,282,975.88	39.421729	-108.038501
Interp @ 1067.5 (Daybreak) - actual wellpath misses target center by 22.2ft at 1100.1ft MD (1057.0 TVD, 224.5 N, 29.7 E) - Point	0.00	0.00	1,067.5	205.0	28.1	1,588,557.68	2,282,982.70	39.421843	-108.038481
Interp @ 1094.3 (Daybreak) - actual wellpath misses target center by 159.9ft at 1058.8ft MD (1020.6 TVD, 205.3 N, 26.6 E) - Point	0.00	0.00	1,094.3	64.5	8.8	1,588,417.75	2,282,959.54	39.421457	-108.038549
Daybreak Federal 19-2 () - actual wellpath misses target center by 18.0ft at 7018.2ft MD (6193.6 TVD, 2512.3 N, 327.2 E) - Circle (radius 25.0)	0.00	0.00	6,194.0	2,516.9	344.6	1,590,859.80	2,283,363.72	39.428190	-108.037360
Daybreak Federal 19-2 () - actual wellpath misses target center by 22.2ft at 5329.9ft MD (4506.3 TVD, 2494.8 N, 343.3 E) - Point	0.00	0.00	4,504.0	2,516.9	344.6	1,590,859.80	2,283,363.72	39.428190	-108.037360
Interp @ 1059.2 (Daybreak) - actual wellpath misses target center by 22.0ft at 1090.8ft MD (1048.8 TVD, 220.2 N, 29.0 E) - Point	0.00	0.00	1,059.2	200.9	27.5	1,588,553.59	2,282,982.02	39.421831	-108.038483

Design Annotations					
	Measured Depth (ft)	Vertical Depth (ft)	Local Coordinates		Comment
			+N/-S (ft)	+E/-W (ft)	
	7,045.0	6,220.3	2,512.1	326.7	Last Cathedral Survey @ 7,045' MD
	7,095.0	6,270.3	2,511.6	325.7	Projection to Bit @ 7,095' MD

Checked By: _____	Approved By: _____	Date: _____
-------------------	--------------------	-------------