

ANADARKO E&P COMPANY LP

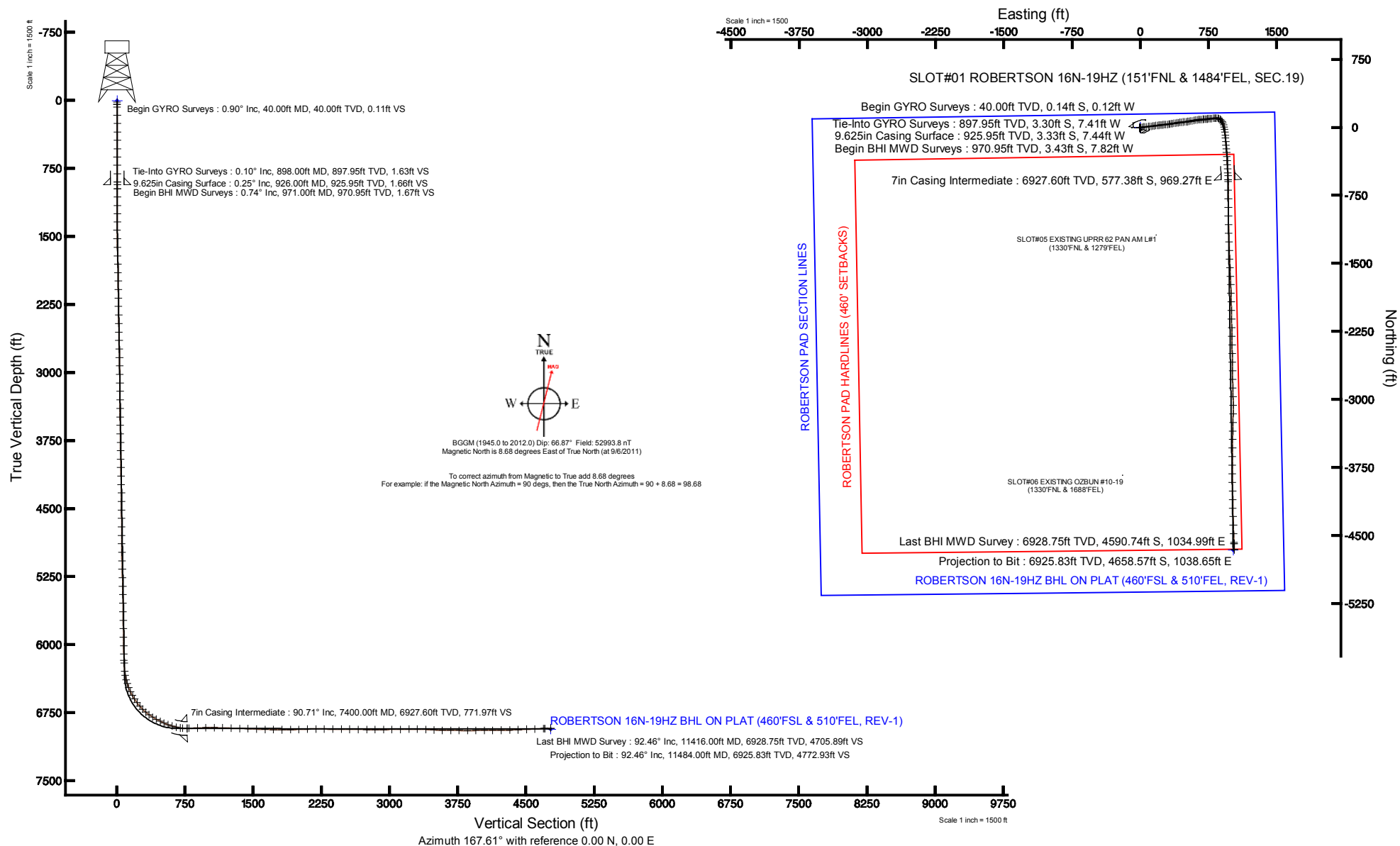
Location: COLORADO Slot: SLOT#01 ROBERTSON 16N-19HZ (151°FNL & 1484°FEL, SEC.19)
 Field: WELD COUNTY (KERR MCGEE) Well: ROBERTSON 16N-19HZ
 Facility: SEC.19-T2N-R64W Wellbore: ROBERTSON 16N-19HZ PWB

Plot reference wellpath is ROBERTSON 16N-19HZ (REV-D.0) PWP

True vertical depths are referenced to XTREME 6 (RKB)	Grid System: NAD83 / Lambert Colorado SP, Northern Zone (501), US feet
Measured depths are referenced to XTREME 6 (RKB)	North Reference: True north
XTREME 6 (RKB) to Mean Sea Level: 4952 feet	Scale: True distance
Mean Sea Level to Mud line (At Slot: SLOT#01 ROBERTSON 16N-19HZ (151°FNL & 1484°FEL, SEC.19)): 0 feet	Depths are in feet
Coordinates are in feet referenced to Slot	Created by: wlsje02 on 1/5/2012



PvA





Actual Wellpath Report

ROBERTSON 16N-19HZ AWB

Page 1 of 5



REFERENCE WELLPATH IDENTIFICATION

Operator	ANADARKO E&P COMPANY LP	Slot	SLOT#01 ROBERTSON 16N-19HZ (151'FNL & 1484'FEL, SEC.19)
Area	COLORADO	Well	ROBERTSON 16N-19HZ
Field	WELD COUNTY (KERR MCGEE)	Wellbore	ROBERTSON 16N-19HZ AWB
Facility	SEC.19-T2N-R64W		

REPORT SETUP INFORMATION

Projection System	NAD83 / Lambert Colorado SP, Northern Zone (501), US feet	Software System	WellArchitect® 3.0.0
North Reference	True	User	Wilsjef02
Scale	0.999959	Report Generated	1/6/2012 at 8:55:08 AM
Convergence at slot	0.59° East	Database/Source file	WA_ANADARKO/ROBERTSON_16N-19HZ_AWB.xml

WELLPATH LOCATION

	Local coordinates		Grid coordinates		Geographic coordinates	
	North[ft]	East[ft]	Easting[US ft]	Northing[US ft]	Latitude	Longitude
Slot Location	0.16	0.11	3254443.40	1291785.56	40°07'50.740"N	104°35'24.040"W
Facility Reference Pt			3254443.30	1291785.40	40°07'50.738"N	104°35'24.041"W
Field Reference Pt			3197771.84	1268891.29	40°04'09.600"N	104°47'36.000"W

WELLPATH DATUM

Calculation method	Minimum curvature	XTREME 6 (RKB) to Facility Vertical Datum	4952.00ft
Horizontal Reference Pt	Slot	XTREME 6 (RKB) to Mean Sea Level	4952.00ft
Vertical Reference Pt	XTREME 6 (RKB)	XTREME 6 (RKB) to Mud Line at Slot (SLOT#01 ROBERTSON 16N-19HZ (151'FNL & 1484'FEL, SEC.19))	4952.00ft
MD Reference Pt	XTREME 6 (RKB)	Section Origin	N 0.00, E 0.00 ft
Field Vertical Reference	Mean Sea Level	Section Azimuth	167.61°



Actual Wellpath Report

ROBERTSON 16N-19HZ AWB

Page 2 of 5



REFERENCE WELLPATH IDENTIFICATION

Operator	ANADARKO E&P COMPANY LP	Slot	SLOT#01 ROBERTSON 16N-19HZ (151'FNL & 1484'FEL, SEC.19)
Area	COLORADO	Well	ROBERTSON 16N-19HZ
Field	WELD COUNTY (KERR MCGEE)	Wellbore	ROBERTSON 16N-19HZ AWB
Facility	SEC.19-T2N-R64W		

WELLPATH DATA (127 stations)

MD [ft]	Inclination [°]	Azimuth [°]	TVD [ft]	Vert Sect [ft]	North [ft]	East [ft]	Latitude	Longitude	DLS [°/100ft]	Comments
898.00	0.100	129.010	897.95	1.63	-3.30	-7.41	40°07'50.707"N	104°35'24.135"W	1.12	Tie-Into GYRO Surveys
971.00	0.740	259.230	970.95	1.67	-3.43	-7.82	40°07'50.706"N	104°35'24.140"W	1.11	Begin BHI MWD Surveys
1063.00	1.000	96.990	1062.94	1.92	-3.63	-7.61	40°07'50.704"N	104°35'24.138"W	1.87	
1156.00	2.480	66.560	1155.90	1.80	-2.93	-4.95	40°07'50.711"N	104°35'24.103"W	1.82	
1247.00	4.360	80.310	1246.74	1.59	-1.57	0.26	40°07'50.724"N	104°35'24.036"W	2.24	
1339.00	6.380	73.180	1338.33	1.36	0.50	8.60	40°07'50.745"N	104°35'23.929"W	2.31	
1431.00	8.190	74.280	1429.58	0.58	3.76	19.81	40°07'50.777"N	104°35'23.785"W	1.97	
1529.00	10.110	82.750	1526.33	0.95	6.73	35.06	40°07'50.806"N	104°35'23.588"W	2.39	
1624.00	11.500	84.810	1619.65	2.88	8.64	52.76	40°07'50.825"N	104°35'23.360"W	1.52	
1719.00	12.170	86.060	1712.63	5.54	10.19	72.18	40°07'50.840"N	104°35'23.110"W	0.76	
1814.00	11.550	84.080	1805.60	8.09	11.86	91.63	40°07'50.857"N	104°35'22.860"W	0.78	
1909.00	10.270	83.160	1898.88	9.98	13.85	109.50	40°07'50.876"N	104°35'22.630"W	1.36	
2003.00	10.240	84.280	1991.38	11.76	15.68	126.14	40°07'50.895"N	104°35'22.416"W	0.21	
2098.00	9.790	80.980	2084.93	13.22	17.78	142.52	40°07'50.915"N	104°35'22.205"W	0.77	
2193.00	9.350	81.250	2178.61	14.19	20.22	158.12	40°07'50.939"N	104°35'22.004"W	0.47	
2288.00	10.110	83.170	2272.24	15.49	22.39	174.03	40°07'50.961"N	104°35'21.799"W	0.87	
2383.00	9.700	82.110	2365.83	16.92	24.48	190.23	40°07'50.982"N	104°35'21.590"W	0.47	
2478.00	8.900	83.830	2459.58	18.35	26.37	205.47	40°07'51.000"N	104°35'21.394"W	0.89	
2573.00	9.200	81.620	2553.40	19.68	28.27	220.29	40°07'51.019"N	104°35'21.204"W	0.48	
2668.00	9.740	83.480	2647.10	21.03	30.28	235.78	40°07'51.039"N	104°35'21.004"W	0.65	
2763.00	9.700	87.600	2740.74	23.24	31.53	251.76	40°07'51.051"N	104°35'20.798"W	0.73	
2858.00	9.380	84.800	2834.42	25.60	32.57	267.47	40°07'51.061"N	104°35'20.596"W	0.59	
2953.00	10.180	85.030	2928.04	27.66	34.00	283.54	40°07'51.076"N	104°35'20.389"W	0.84	
3047.00	9.830	83.720	3020.61	29.58	35.60	299.80	40°07'51.091"N	104°35'20.180"W	0.44	
3142.00	8.770	82.600	3114.36	31.08	37.42	315.04	40°07'51.109"N	104°35'19.984"W	1.13	
3237.00	8.670	82.270	3208.27	32.29	39.31	329.32	40°07'51.128"N	104°35'19.800"W	0.12	
3332.00	9.180	78.380	3302.12	32.98	41.80	343.83	40°07'51.153"N	104°35'19.613"W	0.83	
3427.00	9.590	75.320	3395.84	32.76	45.33	358.91	40°07'51.188"N	104°35'19.419"W	0.68	
3522.00	9.400	81.610	3489.55	32.99	48.47	374.24	40°07'51.219"N	104°35'19.222"W	1.11	
3617.00	9.880	80.810	3583.20	33.99	50.90	389.96	40°07'51.243"N	104°35'19.019"W	0.52	
3712.00	9.600	82.610	3676.84	35.13	53.22	405.87	40°07'51.266"N	104°35'18.814"W	0.44	
3807.00	9.520	85.070	3770.52	36.84	54.92	421.55	40°07'51.282"N	104°35'18.612"W	0.44	
3901.00	9.680	80.930	3863.20	38.31	56.83	437.10	40°07'51.301"N	104°35'18.412"W	0.75	
3996.00	9.610	80.460	3956.86	39.17	59.41	452.80	40°07'51.327"N	104°35'18.210"W	0.11	
4091.00	11.100	85.530	4050.31	40.83	61.43	469.74	40°07'51.347"N	104°35'17.992"W	1.84	
4186.00	11.040	84.970	4143.54	43.25	62.94	487.92	40°07'51.362"N	104°35'17.758"W	0.13	
4281.00	9.250	84.290	4237.05	45.31	64.50	504.58	40°07'51.377"N	104°35'17.544"W	1.89	
4376.00	9.930	82.510	4330.73	46.90	66.33	520.30	40°07'51.395"N	104°35'17.341"W	0.78	
4471.00	10.470	78.890	4424.22	47.79	69.06	536.89	40°07'51.422"N	104°35'17.128"W	0.88	
4566.00	10.780	78.010	4517.60	48.05	72.57	554.05	40°07'51.457"N	104°35'16.907"W	0.37	
4661.00	10.860	80.130	4610.91	48.51	75.95	571.56	40°07'51.490"N	104°35'16.681"W	0.43	
4756.00	11.450	80.450	4704.11	49.37	79.05	589.67	40°07'51.521"N	104°35'16.448"W	0.62	
4851.00	10.910	78.420	4797.31	49.96	82.41	607.78	40°07'51.554"N	104°35'16.215"W	0.70	
4946.00	9.910	79.970	4890.74	50.43	85.64	624.64	40°07'51.586"N	104°35'15.998"W	1.09	
5041.00	10.050	84.550	4984.31	51.77	87.85	640.94	40°07'51.608"N	104°35'15.788"W	0.85	
5136.00	9.390	84.760	5077.94	53.74	89.35	656.91	40°07'51.622"N	104°35'15.582"W	0.70	
5231.00	10.340	86.570	5171.54	56.03	90.57	673.14	40°07'51.635"N	104°35'15.373"W	1.05	
5325.00	9.900	86.250	5264.08	58.56	91.60	689.62	40°07'51.645"N	104°35'15.161"W	0.47	
5420.00	8.100	88.050	5357.90	61.00	92.36	704.46	40°07'51.652"N	104°35'14.970"W	1.92	
5515.00	7.770	86.160	5541.99	63.17	93.02	717.56	40°07'51.659"N	104°35'14.802"W	0.44	
5610.00	7.370	80.510	5546.17	64.43	94.45	729.97	40°07'51.673"N	104°35'14.642"W	0.89	
5705.00	8.360	83.130	5640.27	65.41	96.29	742.84	40°07'51.691"N	104°35'14.476"W	1.11	
5800.00	9.950	84.410	5734.06	67.04	97.91	757.87	40°07'51.707"N	104°35'14.283"W	1.69	
5895.00	8.330	84.160	5827.85	68.80	99.41	772.88	40°07'51.722"N	104°35'14.089"W	1.71	
5990.00	10.140	82.940	5921.61	70.36	101.14	788.03	40°07'51.739"N	104°35'13.894"W	1.92	
6085.00	10.340	83.470	6015.10	72.01	103.14	804.80	40°07'51.759"N	104°35'13.678"W	0.23	
6180.00	10.110	83.740	6108.59	73.78	105.02	821.56	40°07'51.777"N	104°35'13.463"W	0.25	
6250.00	9.950	87.980	6177.52	75.52	105.90	833.71	40°07'51.786"N	104°35'13.306"W	1.08	
6279.00	10.220	89.060	6206.08	76.48	106.03	838.78	40°07'51.787"N	104°35'13.241"W	1.14	
6373.00	13.290	102.510	6298.11	82.69	103.82	857.68	40°07'51.765"N	104°35'12.998"W	4.36	



Actual Wellpath Report

ROBERTSON 16N-19HZ AWB

Page 3 of 5



REFERENCE WELLPATH IDENTIFICATION

Operator	ANADARKO E&P COMPANY LP	Slot	SLOT#01 ROBERTSON 16N-19HZ (151'FNL & 1484'FEL, SEC.19)
Area	COLORADO	Well	ROBERTSON 16N-19HZ
Field	WELD COUNTY (KERR MCGEE)	Wellbore	ROBERTSON 16N-19HZ AWB
Facility	SEC.19-T2N-R64W		

WELLPATH DATA (127 stations) † = interpolated/extrapolated station

MD [ft]	Inclination [°]	Azimuth [°]	TVD [ft]	Vert Sect [ft]	North [ft]	East [ft]	Latitude	Longitude	DLS [°/100ft]	Comments
6420.00	15.860	116.510	6343.61	89.00	99.79	868.70	40°07'51.726"N	104°35'12.856"W	9.24	
6468.00	18.550	126.950	6389.47	98.92	92.27	880.68	40°07'51.651"N	104°35'12.701"W	8.51	
6515.00	20.270	140.900	6433.82	111.87	81.45	891.80	40°07'51.544"N	104°35'12.558"W	10.49	
6563.00	22.880	148.650	6478.46	128.13	67.02	901.90	40°07'51.402"N	104°35'12.428"W	8.04	
6610.00	25.790	156.160	6521.29	146.80	49.86	910.79	40°07'51.232"N	104°35'12.314"W	9.03	
6658.00	28.760	159.200	6563.95	168.46	29.51	919.11	40°07'51.031"N	104°35'12.207"W	6.83	
6705.00	32.540	167.110	6604.39	192.31	6.60	925.95	40°07'50.805"N	104°35'12.119"W	11.75	
6753.00	36.220	171.780	6644.01	219.37	-20.04	930.86	40°07'50.541"N	104°35'12.055"W	9.43	
6800.00	40.360	173.200	6680.89	248.38	-48.90	934.65	40°07'50.256"N	104°35'12.007"W	9.00	
6848.00	45.740	174.870	6715.96	280.93	-81.48	938.03	40°07'49.934"N	104°35'11.963"W	11.46	
6895.00	49.310	175.590	6747.69	315.28	-116.02	940.91	40°07'49.593"N	104°35'11.926"W	7.68	
6943.00	54.770	175.960	6777.20	352.73	-153.75	943.69	40°07'49.220"N	104°35'11.890"W	11.39	
6990.00	58.990	175.620	6802.88	391.68	-193.00	946.58	40°07'48.832"N	104°35'11.853"W	9.00	
7037.00	61.780	176.150	6826.10	432.11	-233.75	949.51	40°07'48.429"N	104°35'11.815"W	6.02	
7085.00	62.240	176.460	6848.63	474.01	-276.05	952.24	40°07'48.011"N	104°35'11.780"W	1.12	
7132.00	65.850	177.240	6869.20	515.71	-318.24	954.56	40°07'47.595"N	104°35'11.751"W	7.82	
7180.00	70.860	176.610	6886.90	559.72	-362.77	956.96	40°07'47.154"N	104°35'11.720"W	10.51	
7227.00	73.370	176.040	6901.33	603.93	-407.40	959.82	40°07'46.713"N	104°35'11.683"W	5.46	
7275.00	76.850	174.890	6913.66	649.88	-453.64	963.50	40°07'46.257"N	104°35'11.636"W	7.61	
7322.00	81.540	177.130	6922.47	695.53	-499.68	966.70	40°07'45.802"N	104°35'11.594"W	11.02	
7350.00	85.030	178.140	6925.74	722.91	-527.46	967.85	40°07'45.527"N	104°35'11.580"W	12.97	
7400.00†	90.711	178.582	6927.60	771.97	-577.38	969.27	40°07'45.034"N	104°35'11.561"W	11.40	7" Casing Point
7419.00	92.870	178.750	6927.01	790.61	-596.37	969.72	40°07'44.846"N	104°35'11.556"W	11.40	
7514.00	92.520	179.220	6922.54	883.64	-691.25	971.40	40°07'43.908"N	104°35'11.534"W	0.62	
7609.00	91.410	180.010	6919.28	976.50	-786.19	972.04	40°07'42.970"N	104°35'11.526"W	1.43	
7704.00	88.950	180.310	6918.99	1069.23	-881.18	971.77	40°07'42.032"N	104°35'11.529"W	2.61	
7799.00	87.900	179.170	6921.60	1162.06	-976.14	972.20	40°07'41.093"N	104°35'11.524"W	1.63	
7894.00	87.810	178.600	6925.15	1255.16	-1071.05	974.05	40°07'40.155"N	104°35'11.500"W	0.61	
7989.00	88.800	178.250	6927.96	1348.43	-1165.97	976.66	40°07'39.217"N	104°35'11.466"W	1.11	
8084.00	87.720	178.490	6930.85	1441.72	-1260.89	979.36	40°07'38.279"N	104°35'11.432"W	1.16	
8179.00	87.720	177.780	6934.63	1535.04	-1355.76	982.45	40°07'37.342"N	104°35'11.392"W	0.75	
8274.00	87.810	177.400	6938.33	1628.53	-1450.61	986.44	40°07'36.404"N	104°35'11.341"W	0.41	
8368.00	88.700	177.770	6941.19	1721.07	-1544.48	990.40	40°07'35.477"N	104°35'11.290"W	1.03	
8463.00	89.840	177.710	6942.40	1814.57	-1639.40	994.14	40°07'34.539"N	104°35'11.242"W	1.20	
8558.00	91.230	177.580	6941.52	1908.11	-1734.31	998.05	40°07'33.601"N	104°35'11.191"W	1.47	
8653.00	92.120	178.220	6938.74	2001.54	-1829.20	1001.53	40°07'32.663"N	104°35'11.147"W	1.15	
8748.00	91.750	178.880	6935.53	2094.76	-1924.12	1003.93	40°07'31.725"N	104°35'11.116"W	0.80	
8843.00	89.960	179.290	6934.11	2187.85	-2019.09	1005.45	40°07'30.787"N	104°35'11.096"W	1.93	
8938.00	89.380	178.530	6934.66	2281.00	-2114.07	1007.25	40°07'29.848"N	104°35'11.073"W	1.01	
9033.00	89.780	178.620	6935.36	2374.26	-2209.04	1009.62	40°07'28.909"N	104°35'11.043"W	0.43	
9128.00	89.160	179.310	6936.24	2467.40	-2304.02	1011.33	40°07'27.971"N	104°35'11.021"W	0.98	
9223.00	89.100	178.770	6937.68	2560.50	-2399.00	1012.92	40°07'27.032"N	104°35'11.000"W	0.57	
9318.00	89.530	179.220	6938.81	2653.62	-2493.97	1014.59	40°07'26.094"N	104°35'10.979"W	0.66	
9413.00	88.640	178.780	6940.33	2746.74	-2588.95	1016.25	40°07'25.155"N	104°35'10.958"W	1.05	
9508.00	90.090	179.730	6941.38	2839.77	-2683.93	1017.48	40°07'24.217"N	104°35'10.942"W	1.82	
9603.00	90.760	178.660	6940.68	2932.83	-2778.91	1018.82	40°07'23.278"N	104°35'10.925"W	1.33	
9698.00	90.670	178.180	6939.49	3026.13	-2873.87	1021.44	40°07'22.340"N	104°35'10.891"W	0.51	
9792.00	91.410	178.600	6937.79	3118.46	-2967.82	1024.08	40°07'21.411"N	104°35'10.857"W	0.91	
9887.00	90.730	179.720	6936.01	3211.51	-3062.79	1025.47	40°07'20.473"N	104°35'10.839"W	1.38	
9982.00	88.700	181.010	6936.49	3304.16	-3157.78	1024.86	40°07'19.534"N	104°35'10.847"W	2.53	
10077.00	87.450	181.990	6939.68	3396.32	-3252.69	1022.38	40°07'18.596"N	104°35'10.879"W	1.67	
10172.00	87.250	180.580	6944.07	3488.53	-3347.56	1020.25	40°07'17.658"N	104°35'10.906"W	1.50	
10267.00	88.250	181.400	6947.80	3580.87	-3442.47	1018.61	40°07'16.721"N	104°35'10.928"W	1.36	
10362.00	89.900	180.620	6949.33	3673.27	-3537.44	1016.94	40°07'15.782"N	104°35'10.949"W	1.92	
10457.00	89.350	179.690	6949.96	3766.00	-3632.44	1016.68	40°07'14.843"N	104°35'10.953"W	1.14	
10551.00	90.030	180.560	6950.46	3857.76	-3726.43	1016.47	40°07'13.914"N	104°35'10.955"W	1.17	
10646.00	90.670	180.090	6949.88	3950.43	-3821.43	1015.94	40°07'12.976"N	104°35'10.962"W	0.84	
10740.00	90.800	179.390	6948.68	4042.32	-3915.42	1016.36	40°07'12.047"N	104°35'10.957"W	0.76	
10835.00	89.900	178.430	6948.10	4135.47	-4010.40	1018.17	40°07'11.108"N	104°35'10.934"W	1.39	
10929.00	90.790	179.360	6947.53	4227.65	-4104.38	1019.98	40°07'10.179"N	104°35'10.910"W	1.37	



Actual Wellpath Report

ROBERTSON 16N-19HZ AWB

Page 4 of 5



REFERENCE WELLPATH IDENTIFICATION

Operator	ANADARKO E&P COMPANY LP	Slot	SLOT#01 ROBERTSON 16N-19HZ (151'FNL & 1484'FEL, SEC.19)
Area	COLORADO	Well	ROBERTSON 16N-19HZ
Field	WELD COUNTY (KERR MCGEE)	Wellbore	ROBERTSON 16N-19HZ AWB
Facility	SEC.19-T2N-R64W		

WELLPATH DATA (127 stations)

MD [ft]	Inclination [°]	Azimuth [°]	TVD [ft]	Vert Sect [ft]	North [ft]	East [ft]	Latitude	Longitude	DLS [°/100ft]	Comments
11024.00	91.540	178.660	6945.60	4320.75	-4199.34	1021.62	40°07'09.241"N	104°35'10.889"W	1.08	
11119.00	92.430	178.260	6942.31	4413.99	-4294.25	1024.17	40°07'08.303"N	104°35'10.856"W	1.03	
11214.00	93.050	178.260	6937.77	4507.25	-4389.10	1027.06	40°07'07.366"N	104°35'10.819"W	0.65	
11309.00	92.340	177.880	6933.30	4600.57	-4483.94	1030.25	40°07'06.429"N	104°35'10.778"W	0.85	
11404.00	92.520	177.150	6929.27	4694.06	-4578.76	1034.37	40°07'05.492"N	104°35'10.725"W	0.79	
11416.00	92.460	176.910	6928.75	4705.89	-4590.74	1034.99	40°07'05.373"N	104°35'10.717"W	2.06	Last BHI MWD Survey
11484.00	92.460	176.910	6925.83	4772.93	-4658.57	1038.65	40°07'04.703"N	104°35'10.670"W	0.00	Projection to Bit

HOLE & CASING SECTIONS - Ref Wellbore: ROBERTSON 16N-19HZ AWB Ref Wellpath: ROBERTSON 16N-19HZ AWB

String/Diameter	Start MD [ft]	End MD [ft]	Interval [ft]	Start TVD [ft]	End TVD [ft]	Start N/S [ft]	Start E/W [ft]	End N/S [ft]	End E/W [ft]
12.25in Open Hole	16.00	926.00	910.00	16.00	925.95	0.00	0.00	-3.33	-7.44
9.625in Casing Surface	16.00	926.00	910.00	16.00	925.95	0.00	0.00	-3.33	-7.44
8.75in Open Hole	926.00	7410.00	6484.00	925.95	6927.38	-3.33	-7.44	-587.38	969.51
7in Casing Intermediate	16.00	7400.00	7384.00	16.00	6927.60	0.00	0.00	-577.38	969.27
6.125in Open Hole	7400.00	11484.00	4084.00	6927.60	6925.83	-577.38	969.27	-4658.57	1038.65

TARGETS

Name	MD [ft]	TVD [ft]	North [ft]	East [ft]	Grid East [US ft]	Grid North [US ft]	Latitude	Longitude	Shape
ROBERTSON PAD SECTION LINES		0.00	0.00	0.00	3254443.40	1291785.56	40°07'50.740"N	104°35'24.040"W	polygon
ROBERTSON 16N-19HZ BHL ON PLAT (460'FSL & 510'FEL, REV-1)		6935.00	-4664.02	1025.00	3255516.17	1287132.50	40°07'04.649"N	104°35'10.846"W	point
ROBERTSON PAD HARDLINES (460' SETBACKS)		6935.00	0.00	0.00	3254443.40	1291785.56	40°07'50.740"N	104°35'24.040"W	polygon

WELLPATH COMPOSITION - Ref Wellbore: ROBERTSON 16N-19HZ AWB Ref Wellpath: ROBERTSON 16N-19HZ AWB

Start MD [ft]	End MD [ft]	Positional Uncertainty Model	Log Name/Comment	Wellbore
16.00	898.00	Gyrodata standard - Continuous gyro	GYRODATA SURVEYS <40-898>	ROBERTSON 16N-19HZ AWB
898.00	7350.00	NaviTrak (Standard)	BHI MWD SURVEYS 8 3/4" HOLE <971-7350>	ROBERTSON 16N-19HZ AWB
7350.00	11416.00	NaviTrak (Standard)	BHI MWD SURVEYS 6 1/8" HOLE <7419-11416>	ROBERTSON 16N-19HZ AWB
11416.00	11484.00	Blind Drilling (std)	Projection to bit	ROBERTSON 16N-19HZ AWB



Actual Wellpath Report

ROBERTSON 16N-19HZ AWB

Page 5 of 5



REFERENCE WELLPATH IDENTIFICATION

Operator	ANADARKO E&P COMPANY LP	Slot	SLOT#01 ROBERTSON 16N-19HZ (151'FNL & 1484'FEL, SEC.19)
Area	COLORADO	Well	ROBERTSON 16N-19HZ
Field	WELD COUNTY (KERR MCGEE)	Wellbore	ROBERTSON 16N-19HZ AWB
Facility	SEC.19-T2N-R64W		

WELLPATH COMMENTS

MD [ft]	Inclination [°]	Azimuth [°]	TVD [ft]	Comment
40.00	0.900	220.210	40.00	Begin GYRO Surveys
898.00	0.100	129.010	897.95	Tie-Into GYRO Surveys
971.00	0.740	259.230	970.95	Begin BHI MWD Surveys
7400.00	90.711	178.582	6927.60	7" Casing Point
11416.00	92.460	176.910	6928.75	Last BHI MWD Survey
11484.00	92.460	176.910	6925.83	Projection to Bit