
BILL BARRETT CORPORATION E-BILL

**KAUFMAN 22D-30-691
MAMM CREEK
Garfield County , Colorado**

Cement Surface Casing
13-Sep-2011

Job Site Documents

The Road to Excellence Starts with Safety

Sold To #: 343492	Ship To #: 2874912	Quote #:	Sales Order #: 8428210
Customer: BILL BARRETT CORPORATION E-BILL	Customer Rep: Henderson, Josh		
Well Name: KAUFMAN	Well #: 22D-30-691	API/UWI #: 05-045-20738	
Field: MAMM CREEK	City (SAP): SILT	County/Parish: Garfield	State: Colorado
Lat: N 39.501 deg. OR N 39 deg. 30 min. 4.417 secs.	Long: W 107.603 deg. OR W -108 deg. 23 min. 50.528 secs.		
Contractor: ProPetro Services Inc.	Rig/Platform Name/Num: ProPetro		
Job Purpose: Cement Surface Casing			
Well Type: Development Well	Job Type: Cement Surface Casing		
Sales Person: METLI, MARSHALL	Srv Supervisor: HUGENTOBLE, LOGAN	MBU ID Emp #: 447333	

Job Personnel

HES Emp Name	Exp Hrs	Emp #	HES Emp Name	Exp Hrs	Emp #	HES Emp Name	Exp Hrs	Emp #
BANKS, BRENT A	8	371353	COSTELDIA, BROCK James	8	476115	HUGENTOBLE, LOGAN Mark	8	447333
SINGLETON, AUSTIN W	8	487406						

Equipment

HES Unit #	Distance-1 way	HES Unit #	Distance-1 way	HES Unit #	Distance-1 way	HES Unit #	Distance-1 way
10592964	120 mile	10744549	120 mile	10871245	120 mile	10951247	120 mile
11360881	120 mile						

Job Hours

Date	On Location Hours	Operating Hours	Date	On Location Hours	Operating Hours	Date	On Location Hours	Operating Hours
9/13/11	8	2						

TOTAL	Total is the sum of each column separately							
-------	--	--	--	--	--	--	--	--

Job

Formation Name				Date				Time	Time Zone	
Formation Depth (MD)		Top	Bottom		Called Out		13 - Sep - 2011	02:00	MST	
Form Type		BHST		On Location		13 - Sep - 2011	06:00	MST		
Job depth MD		775. ft		Job Depth TVD		775. ft	Job Started	13 - Sep - 2011	14:22	MST
Water Depth				Wk Ht Above Floor		2. ft	Job Completed	13 - Sep - 2011	15:09	MST
Perforation Depth (MD)		From	To		Departed Loc		13 - Sep - 2011	17:10	MST	

Well Data

Description	New / Used	Max pressure psig	Size in	ID in	Weight lbm/ft	Thread	Grade	Top MD ft	Bottom MD ft	Top TVD ft	Bottom TVD ft
12 1/4" Open Hole				12.25				.	800.		
9 5/8" Surface Casing	New		9.625	8.921	36.		J-55	.	800.		

Sales/Rental/3rd Party (HES)

Description	Qty	Qty uom	Depth	Supplier
PLUG,CMTG,TOP,9 5/8,HWE,8.16 MIN/9.06 MA	1	EA		

Tools and Accessories

Type	Size	Qty	Make	Depth	Type	Size	Qty	Make	Depth	Type	Size	Qty	Make
Guide Shoe					Packer					Top Plug	9.625	1	HES
Float Shoe					Bridge Plug					Bottom Plug			
Float Collar					Retainer					SSR plug set			
Insert Float										Plug Container	9.625	1	HES
Stage Tool										Centralizers			

Miscellaneous Materials

Gelling Agt	Conc	Surfactant	Conc	Acid Type	Qty	Conc	%
Treatment Fld	Conc	Inhibitor	Conc	Sand Type	Size	Qty	

Fluid Data

Stage/Plug #: 1									
Fluid #	Stage Type	Fluid Name	Qty	Qty uom	Mixing Density lbm/gal	Yield ft ³ /sk	Mix Fluid Gal/sk	Rate bbl/min	Total Mix Fluid Gal/sk
1	Water Spacer		20.00	bbl	8.34	.0	.0	5	
2	VersaCem Lead Cement	VERSACEM (TM) SYSTEM (452010)	120.0	sacks	12.3	2.38	13.77	6	13.77
	13.77 Gal	FRESH WATER							
3	SwiftCem Tail Cement	SWIFTCEM (TM) SYSTEM (452990)	120.0	sacks	14.2	1.43	6.85	6	6.85
	6.85 Gal	FRESH WATER							
4	Displacement		54.00	bbl	8.34			8	
Calculated Values		Pressures		Volumes					
Displacement	54	Shut In: Instant		Lost Returns		Cement Slurry	80	Pad	
Top Of Cement	SURFACE	5 Min		Cement Returns	20	Actual Displacement	54	Treatment	
Frac Gradient		15 Min		Spacers	20	Load and Breakdown		Total Job	
Rates									
Circulating		Mixing	6	Displacement	8	Avg. Job	7		
Cement Left In Pipe	Amount	44 ft	Reason	Shoe Joint					
Frac Ring # 1 @	ID	Frac ring # 2 @	ID	Frac Ring # 3 @	ID	Frac Ring # 4 @	ID		
The Information Stated Herein Is Correct				Customer Representative Signature					

The Road to Excellence Starts with Safety

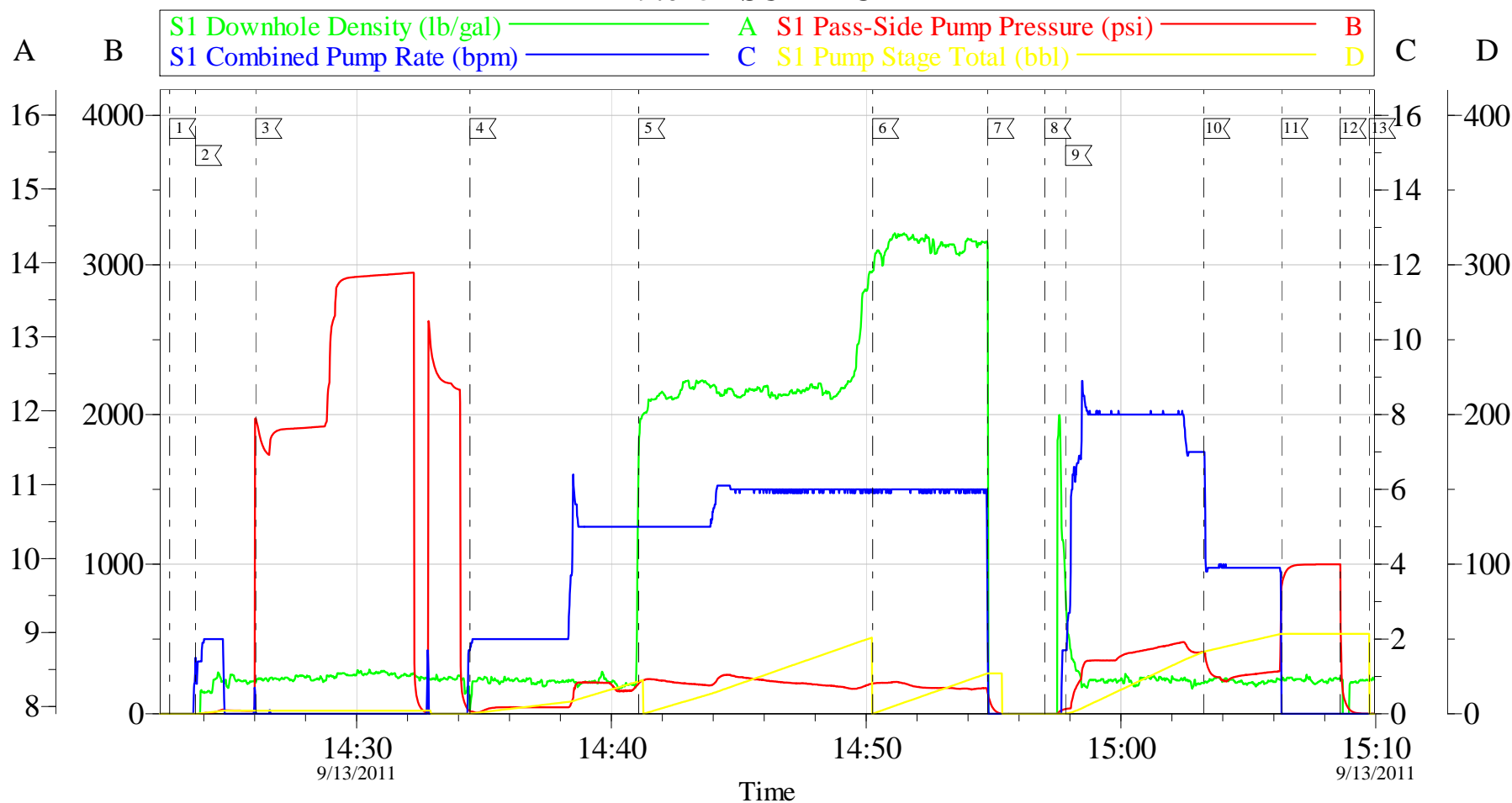
Sold To #: 343492	Ship To #: 2874912	Quote #:	Sales Order #: 8428210
Customer: BILL BARRETT CORPORATION E-BILL		Customer Rep: Henderson, Josh	
Well Name: KAUFMAN	Well #: 22D-30-691	API/UWI #: 05-045-20738	
Field: MAMM CREEK	City (SAP): SILT	County/Parish: Garfield	State: Colorado
Legal Description:			
Lat: N 39.501 deg. OR N 39 deg. 30 min. 4.417 secs.		Long: W 107.603 deg. OR W -108 deg. 23 min. 50.528 secs.	
Contractor: ProPetro Services Inc.		Rig/Platform Name/Num: ProPetro	
Job Purpose: Cement Surface Casing			Ticket Amount:
Well Type: Development Well		Job Type: Cement Surface Casing	
Sales Person: METLI, MARSHALL		Srv Supervisor: HUGENTOBLE, LOGAN	MBU ID Emp #: 447333

Activity Description	Date/Time	Cht #	Rate bbl/min	Volume bbl		Pressure psig		Comments
				Stage	Total	Tubing	Casing	
Call Out	09/13/2011 02:00							
Pre-Convoy Safety Meeting	09/13/2011 04:00							ALL HES EMPLOYEES
Arrive At Loc	09/13/2011 06:00							RIG STILL RUNNING CASING
Assessment Of Location Safety Meeting	09/13/2011 06:30							ALL HES EMPLOYEES
Rig-Up Equipment	09/13/2011 07:00							1 HT-400 PUMP TRUCK, 1 660 BULK TRUCK, 1 F-450 P/U, 1 PLUG CONTAINER
Pre-Job Safety Meeting	09/13/2011 14:00							ALL HES EMPLOYEES, RIG CREW, CO REP AND ANY 3RD PARTY VENDORS
Start Job	09/13/2011 14:22							TP 753 FT, TD 775 FT, FC 709 FT, HOLE 12.25", MUD WT AIR, RATE WILL BE 5, WILL BUMP 500 PSI OVER LAND PSI
Pump Water	09/13/2011 14:23		2	2			32.0	FILL LINES PRIOR TO PRESSURE TESTING LINES
Pressure Test	09/13/2011 14:26							NO LEAKS, KICK OUTS SET TO 3000 PSI FOR TEST.
Pump Spacer 1	09/13/2011 14:34		4	20			39.0	FRESH WATER
Activity Description	Date/Time	Cht #	Rate bbl/min	Volume bbl		Pressure psig		Comments
				Stage	Total	Tubing	Casing	

Pump Lead Cement	09/13/2011 14:41		6	50			197.0	120 SKS VERSACEM CMT TO BE MIXED AT 12.3 PPG, 2.38 YIELD, 13.77 GAL/SK, CMT TO BE WEIGHED VIA PRESSURE BALANCED MUD SCALES WET AND DRY SAMPLES SUBMITTED.
Pump Tail Cement	09/13/2011 14:50		6	30			211.0	120 SKS SWIFTCM CMT TO BE MIXED AT 14.2 PPG, 1.43 YIELD, 6.85 GAL/SK, CMT TO BE WEIGHED VIA PRESSURE BALANCED MUD SCALES, WET AND DRY SAMPLES SUBMITTED,
Shutdown	09/13/2011 14:54							
Drop Plug	09/13/2011 14:57							PLUG LAUNCHED
Pump Displacement	09/13/2011 14:57		8	54			521.0	FRESH WATER
Slow Rate	09/13/2011 15:03		4				290.0	10 BBLS PRIOR TO CALCULATED DISPLACEMENT
Bump Plug	09/13/2011 15:06						902.0	PLUG LANDED
Check Floats	09/13/2011 15:08							FLOATS HOLDING, 20 BBLS CEMENT TO SURFACE
End Job	09/13/2011 15:09							THANK YOU FOR USING HES LOGAN HUGENTOBLE AND CREW
Post-Job Safety Meeting (Pre Rig-Down)	09/13/2011 15:10							ALL HES EMPLOYEES
Rig-Down Equipment	09/13/2011 15:15							
Pre-Convoy Safety Meeting	09/13/2011 17:00							ALL HES EMPLOYEES
Crew Leave Location	09/13/2011 17:10							LOCATION CLEAN

BILL BARRETT

9.625" SURFACE



Local Event Log

1 START JOB	14:22:40	2 PRIME LINES	14:23:41	3 PRESSURE TEST	14:26:02
4 PUMP H2O SPACER	14:34:27	5 PUMP LEAD CEMENT	14:41:04	6 PUMP TAIL CEMENT	14:50:15
7 SHUTDOWN	14:54:47	8 DROP PLUG	14:57:00	9 PUMP DISPLACEMENT	14:57:50
10 SLOW RATE	15:03:15	11 BUMP PLUG	15:06:19	12 CHECK FLOATS	15:08:36
13 END JOB	15:09:45				

Customer: BILL BARRETT
 Well Description: 22D-30-691
 Company Rep: JOSH HENDERSON

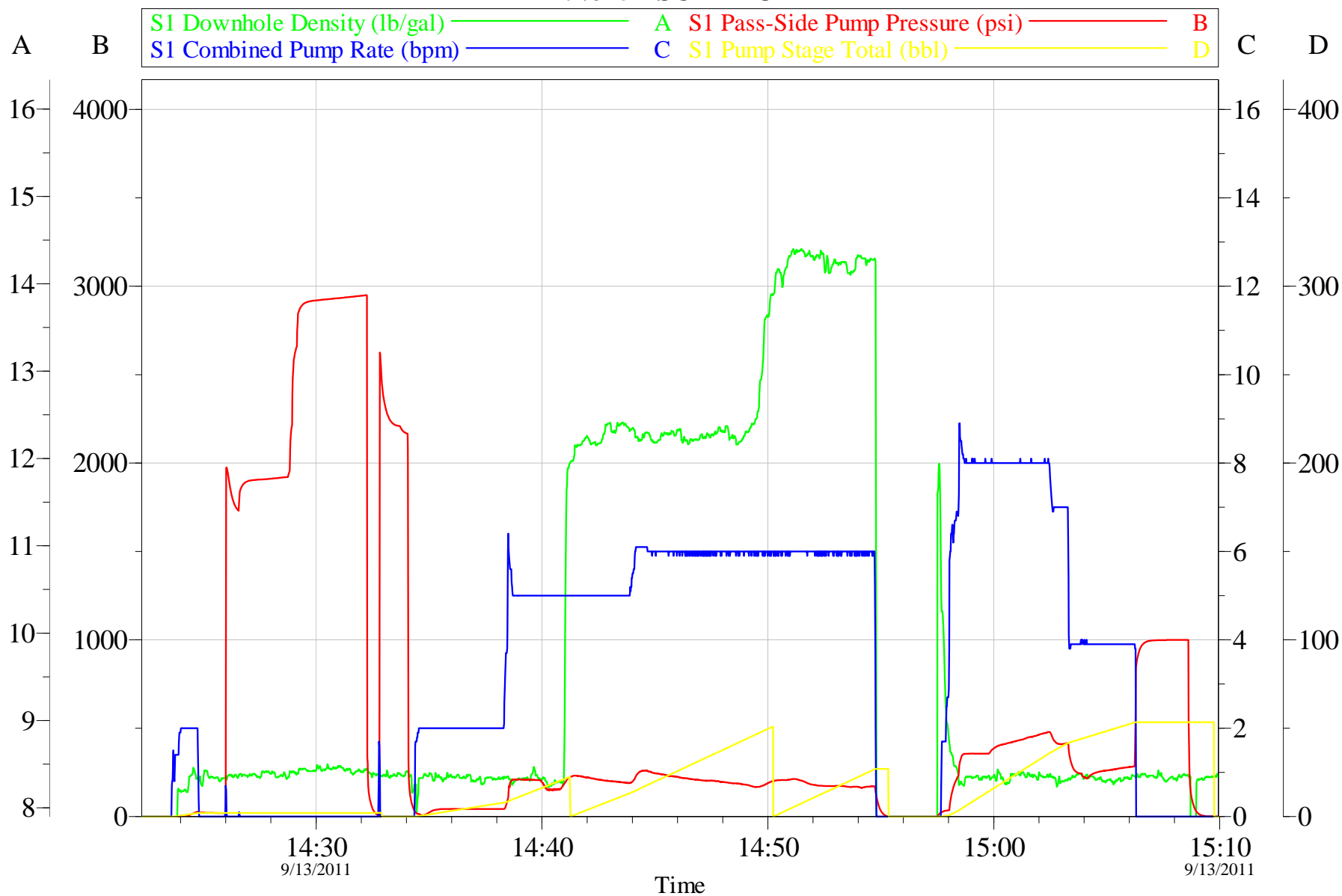
Job Date: 13-Sep-2011
 Job Type: SURFACE
 Cement Supervisor: LOGAN HUGENTOBLE

Sales Order #: 8428210
 ADC Used: YES
 Elite #8 / Operator: BROCK CASTELDIA

OptiCem v6.4.10
 13-Sep-11 15:28

BILL BARRETT

9.625" SURFACE



Customer: BILL BARRETT
Well Description: 22D-30-691
Company Rep: JOSH HENDERSON

Job Date: 13-Sep-2011
Job Type: SURFACE
Cement Supervisor: LOGAN HUGENTOBLE

Sales Order #: 8428210
ADC Used: YES
Elite #8 / Operator: BROCK CASTELDIA

OptiCem v6.4.10
13-Sep-11 15:29

HALLIBURTON

Water Analysis Report

Company: BILL BARRETT

Submitted by: LOGAN HUGENTOBLER

Attention:

Lease KAUFMAN

Well # 22D-30-691

Date: 9/15/2011

Date Rec.: 9/15/2011

S.O.# 8428210

Job Type: 9.625 SURFACE

Specific Gravity	<i>MAX</i>	<i>1</i>
pH	<i>8</i>	<i>7</i>
Potassium (K)	<i>5000</i>	<i>0</i> Mg / L
Calcium (Ca)	<i>500</i>	<i>190</i> Mg / L
Iron (FE2)	<i>300</i>	<i>0</i> Mg / L
Chlorides (Cl)	<i>3000</i>	<i>0</i> Mg / L
Sulfates (SO ₄)	<i>1500</i>	<i>below 200</i> Mg / L
Chlorine (Cl ₂)		<i>0</i> Mg / L
Temp	<i>40-80</i>	<i>65</i> Deg
Total Dissolved Solids		<i>310</i> Mg / L

Respectfully: LOGAN HUGENTOBLER

Title: CEMENTING SUPERVISOR

Location: Grand Junction, CO

NOTICE:

This report is limited to the described sample tested. Any person using or relying on this report agrees that Halliburton shall not be liable for any loss or damage whether due to act or omission resulting from such report or

Sales Order #: 8428210	Line Item: 10	Survey Conducted Date: 9/13/2011
Customer: BILL BARRETT CORPORATION E-BILL		Job Type (BOM): CMT SURFACE CASING BOM
Customer Representative: JOSH HENDERSON		API / UWI: (leave blank if unknown) 05-045-20738
Well Name: KAUFMAN		Well Number: 22D-30-691
Well Type: Development Well	Well Country: United States of America	
H2S Present: No	Well State: Colorado	Well County: Garfield

Dear Customer,

We hope that you were satisfied with the service quality of this job performed by Halliburton. It is the aim of our management and service personnel to deliver equipment and service of a standard unmatched in the service sector of the energy industry.

Please take the time to let us know if our performance met with your satisfaction. Please be as critical as possible to ensure we constantly improve our service. Your comments are of great value to us and are intended for the exclusive use of Halliburton.

CUSTOMER SATISFACTION SURVEY

CATEGORY	CUSTOMER SATISFACTION RESPONSE	
Survey Conducted Date	The date the survey was conducted	9/13/2011
Survey Interviewer	The survey interviewer is the person who initiated the survey.	LOGAN HUGENTOBLE (HB15210)
Customer Participation	Did the customer participate in this survey? (Y/N)	Yes
Customer Representative	Enter the Customer representative name	JOSH HENDERSON
HSE	Was our HSE performance satisfactory? Circle Y or N	Yes
Equipment	Were you satisfied with our Equipment? Circle Y or N	Yes
Personnel	Were you satisfied with our people? Circle Y or N	Yes
Customer Comment	Customer's Comment	
Job DVA	Did we provide job DVA above our normal service today? Circle Y or N	No
Time	Please enter hours in decimal format to nearest quarter hour.	
Other	Enter short text for other efficiencies gained.	
Customer Initials	Customer's Initials	
Please provide details	Please describe how the job efficiencies were gained.	

CUSTOMER SIGNATURE

Sales Order #: 8428210	Line Item: 10	Survey Conducted Date: 9/13/2011
Customer: BILL BARRETT CORPORATION E-BILL		Job Type (BOM): CMT SURFACE CASING BOM
Customer Representative: JOSH HENDERSON		API / UWI: (leave blank if unknown) 05-045-20738
Well Name: KAUFMAN		Well Number: 22D-30-691
Well Type: Development Well	Well Country: United States of America	
H2S Present: No	Well State: Colorado	Well County: Garfield

KEY PERFORMANCE INDICATORS

General	
Survey Conducted Date The date the survey was conducted	9/13/2011

Cementing KPI Survey	
Type of Job Select the type of job. (Cementing or Non-Cementing)	0
Select the Maximum Deviation range for this Job What is the highest deviation for the job you just completed? This may not be the maximum well deviation.	Vertical
Total Operating Time (hours) Total Operating Hours Including Rig-up, Pumping, Rig-down. Enter in decimal format.	8
HSE Incident, Accident, Injury HSE Incident, Accident, Injury. This should be recordable incidents only.	No
Was the job purpose achieved? Was the job delivered correctly as per customer agreed design?	Yes
Operating Hours (Pumping Hours) Total number of hours pumping fluid on this job. Enter in decimal format.	2
Customer Non-Productive Rig Time (hrs) Lost time due to Halliburton in the start, execution, or completion of an ordered service or product, or delays in a follow-on service. Enter in decimal format. 0 if none.	0
Type of Rig Classification Job Was Performed Type Of Rig (classification) Job Was Performed On	Drilling Rig (Portable)
Number Of JSAs Performed Number Of Jsas Performed	6
Number of Unplanned Shutdowns Unplanned shutdown is when injection stops for any period of time.	0
Was this a Primary Cement Job (Yes / No)	Yes

Sales Order #: 8428210	Line Item: 10	Survey Conducted Date: 9/13/2011
Customer: BILL BARRETT CORPORATION E-BILL		Job Type (BOM): CMT SURFACE CASING BOM
Customer Representative: JOSH HENDERSON		API / UWI: (leave blank if unknown) 05-045-20738
Well Name: KAUFMAN		Well Number: 22D-30-691
Well Type: Development Well	Well Country: United States of America	
H2S Present: No	Well State: Colorado	Well County: Garfield

Primary Cement Job= Casing job, Liner job, or Tie-back job.	
Did We Run Wiper Plugs? Did We Run Top And Bottom Casing Wiper Plugs?	Top
Mixing Density of Job Stayed in Designed Density Range (0-100%) Density Range defined as +/- .20 ppg. Calculation: Total BBLs cement mixed at designed density divided by total BBLs of cement multiplied by 100	98
Was Automated Density Control Used? Was Automated Density Control (ADC) Used ?	Yes
Pump Rate (percent) of Job Stayed At Designed Pump Rate Pump Rate range defined as +/- 1bbl/min. Calculation: Total BBLs of fluid pumped at the designed rate divided by Total BBLs of fluid pumped, multiplied by 100	98
Nbr of Remedial Sqz Jobs Rqd - Competition Number Of Remedial Squeeze Jobs Required After Primary Job Performed By Competition	0
Nbr of Remedial Plug Jobs Rqd - HES Number Of Remedial Plug Jobs Needed After Primary Plug Pumped By HES	0
Nbr of Remedial Sqz Jobs Rqd - HES Number Of Remedial Squeeze Jobs Required After Primary Job Performed By HES	0