



PHOENIX SURVEYS, INC.

Gamma Ray C.C.L.V.D.L.
Radial Bond

Company	Barrett Resources Corporation	
Well	Rothe 43-30-5-63	
Field	Wattenberg	
County	Weld	
State	Colorado	
Company	Barrett Resources Corporation	
Well	Rothe 43-30-5-63	
Field	Wattenberg	
County	Weld	State Colorado
Location:	API # : 05-123-32163-0000	Other Services
	1924' FSL & 655' FEL NESE	
Permanent Datum	GL	Elevation KB
Log Measured From	KB	K.B. 4590 D.F. 4589 G.L. 4576
Drilling Measured From	KB	
SEC 30	TWP 5N	RGE 63W
Date	November 18, 2011	
Run Number	One	
Depth Driller	6755	
Depth Logger	6700	
Bottom Logged Interval	6698	
Top Log Interval	2800	
Open Hole Size	7 7/8"	
Type Fluid	Water	
Density / Viscosity	Water	
Max. Recorded Temp.	Not Recorded	
Estimated Cement Top	3046	
Time Well Ready	N/A	
Time Logger on Bottom	N/A	
Equipment Number	24	
Location	Fort Morgan	
Recorded By	Scott Dizmang	
Witnessed By	Chris Adamson	
Borehole Record		
Run Number	Bit	From To
	Size	Weight From To
Casing Record	Size	Wgt/Ft
Surface String	8 5/8"	24
Prot. String		
Production String	4 1/2"	11.6
Liner		

<<< Fold Here >>>

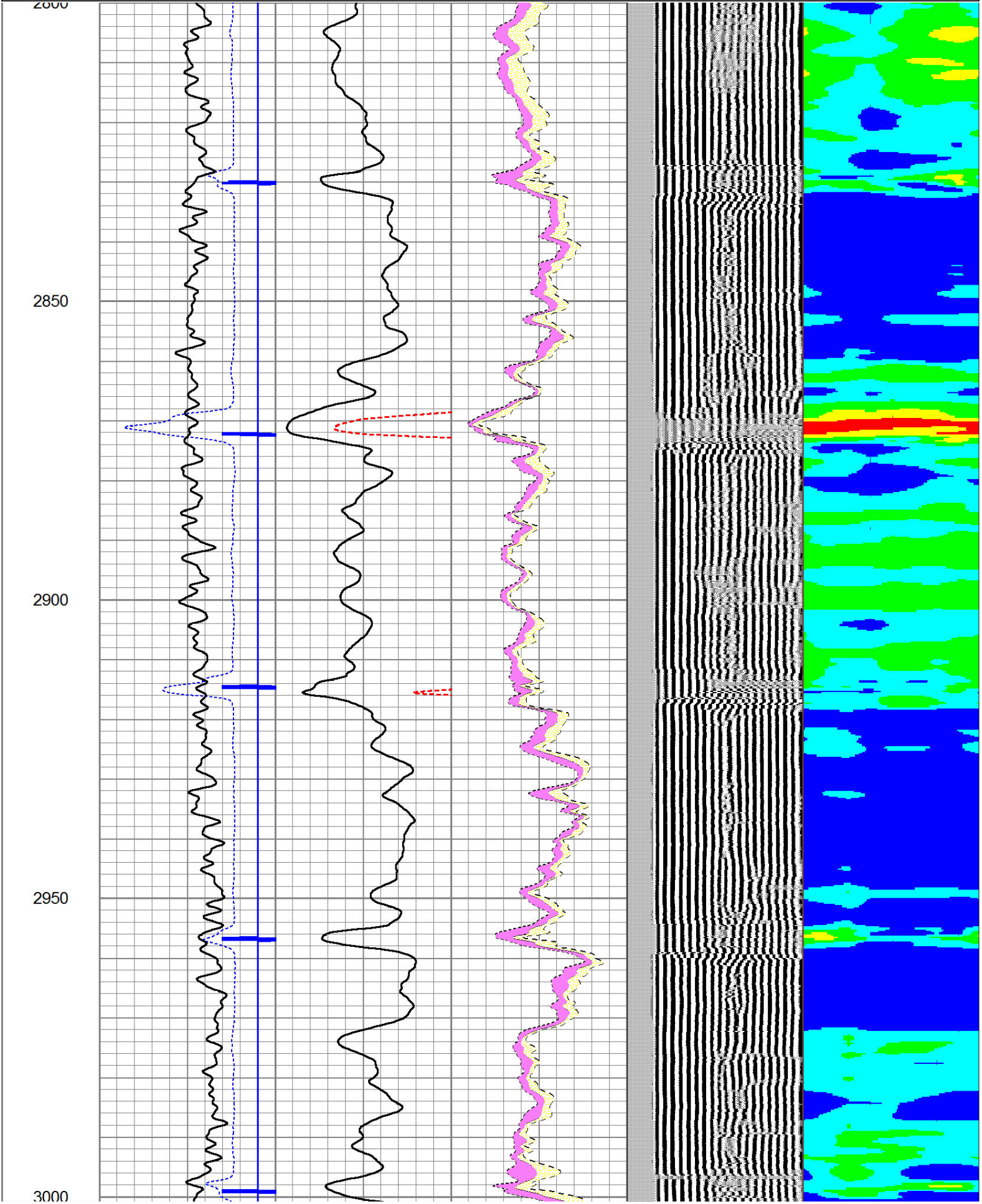
All interpretations are opinions based on inferences from electrical or other measurements and we cannot and do not guarantee the accuracy or correctness of any interpretation, and we shall not, except in the case of gross or willful negligence on our part, be liable or responsible for any loss, costs, damages, or expenses incurred or sustained by anyone resulting from any interpretation made by any of our officers, agents or employees. These interpretations are also subject to our general terms and conditions set out in our current Price Schedule.

Comments

Log correlated to P.S.I open hole log dated October 28, 2011
Marker Joints @
6566-6596
6293-6318

Database File: rothe 43-30.db
Dataset Pathname: pass3
Presentation Format: scbl02
Dataset Creation: Fri Nov 18 21:15:47 2011 by Log Std Casedhole 09061
Charted by: Depth in Feet scaled 1:240

Charted by:		Depth in Feet scaled 1:210												
310	TT (usec)	210	0	AMP (mV)	100	0	AMPAVG	150	200	VDL	1200	1	SECTOR MAP	8
-9	CCL	1	0	AMPx5 (mV)	20	0	AMPMAX	150				25		75
0	GR (GAPI)	200				0	AMPMIN	150						



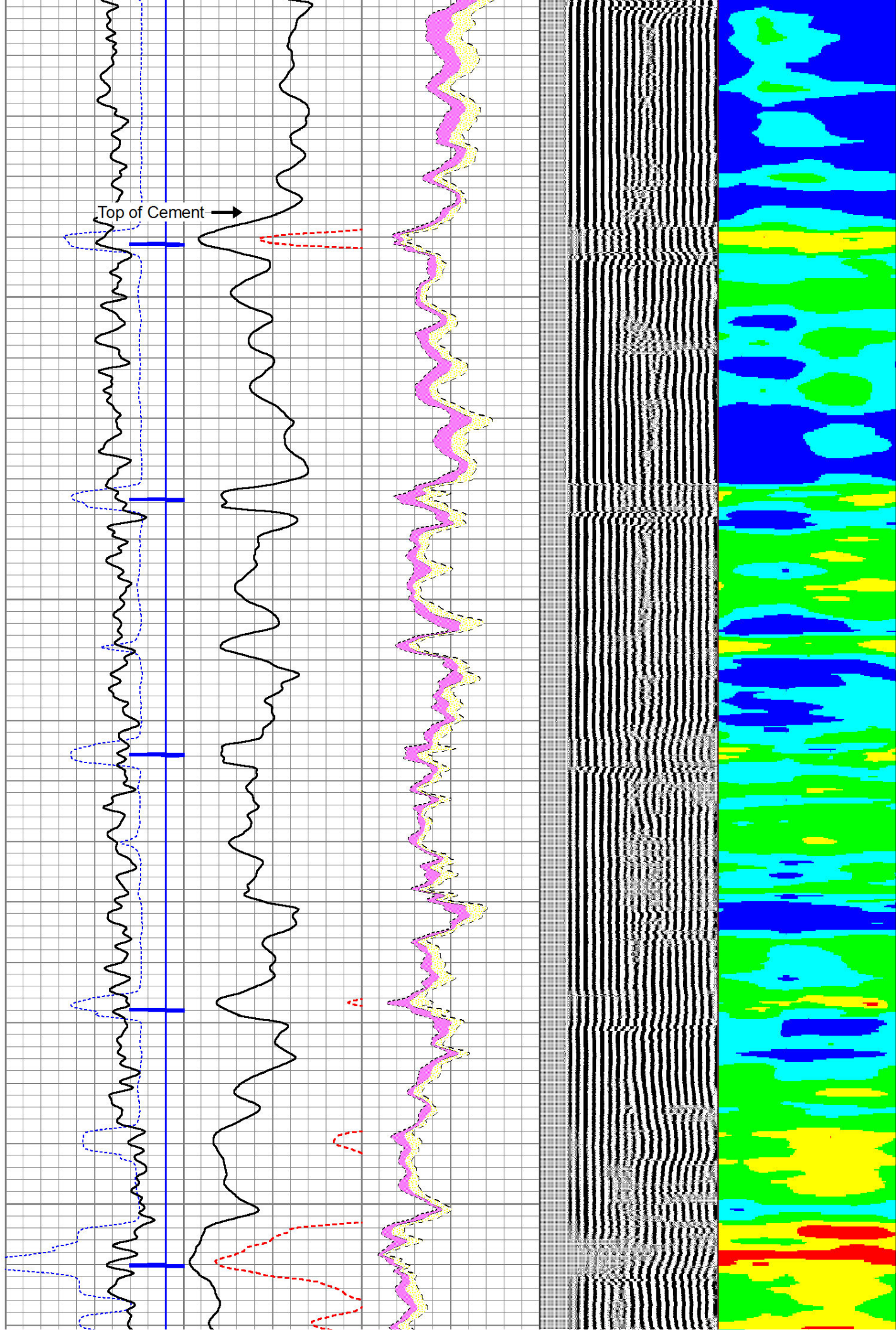
3050

3100

3150

3200

Top of Cement →

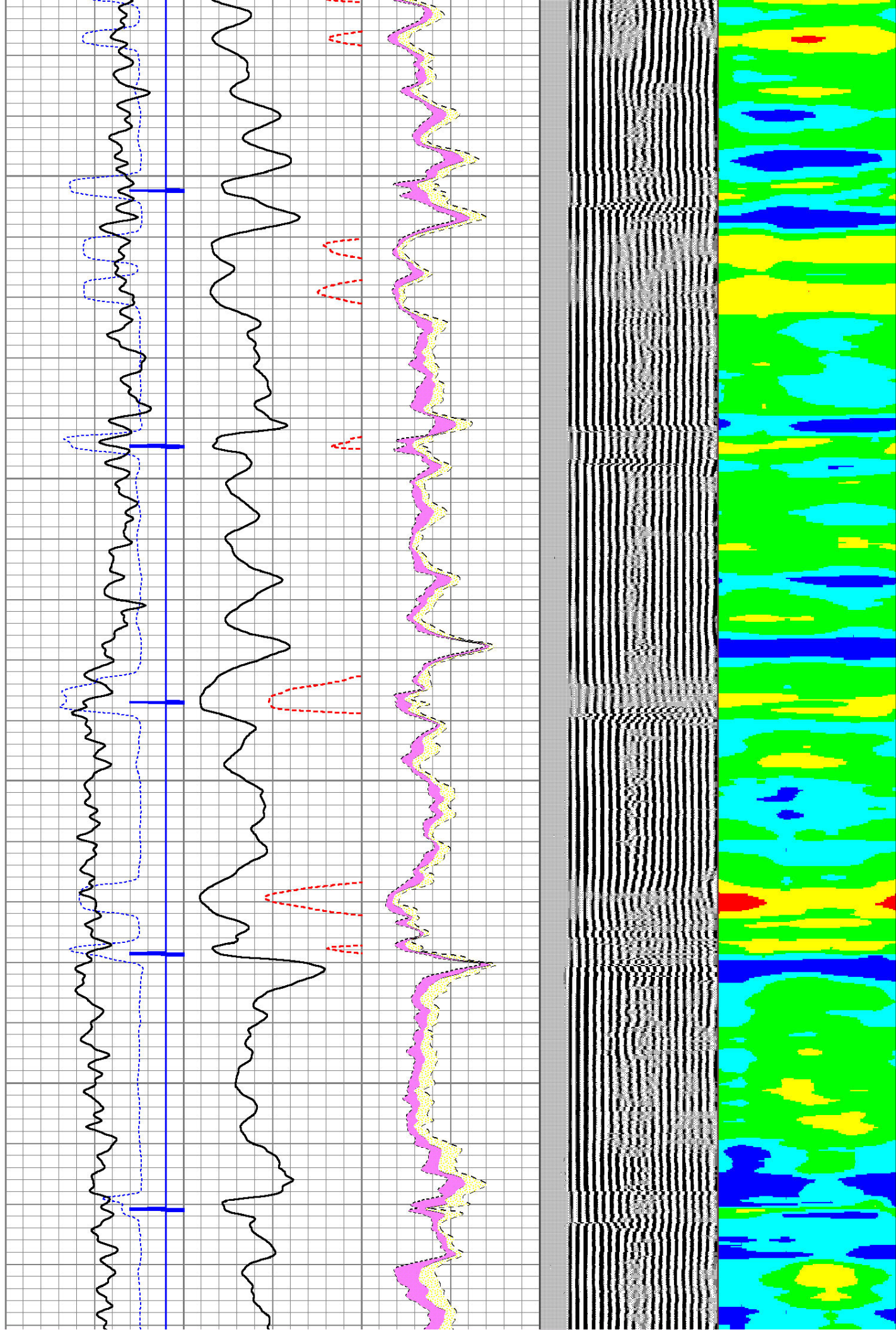


3250

3300

3350

3400



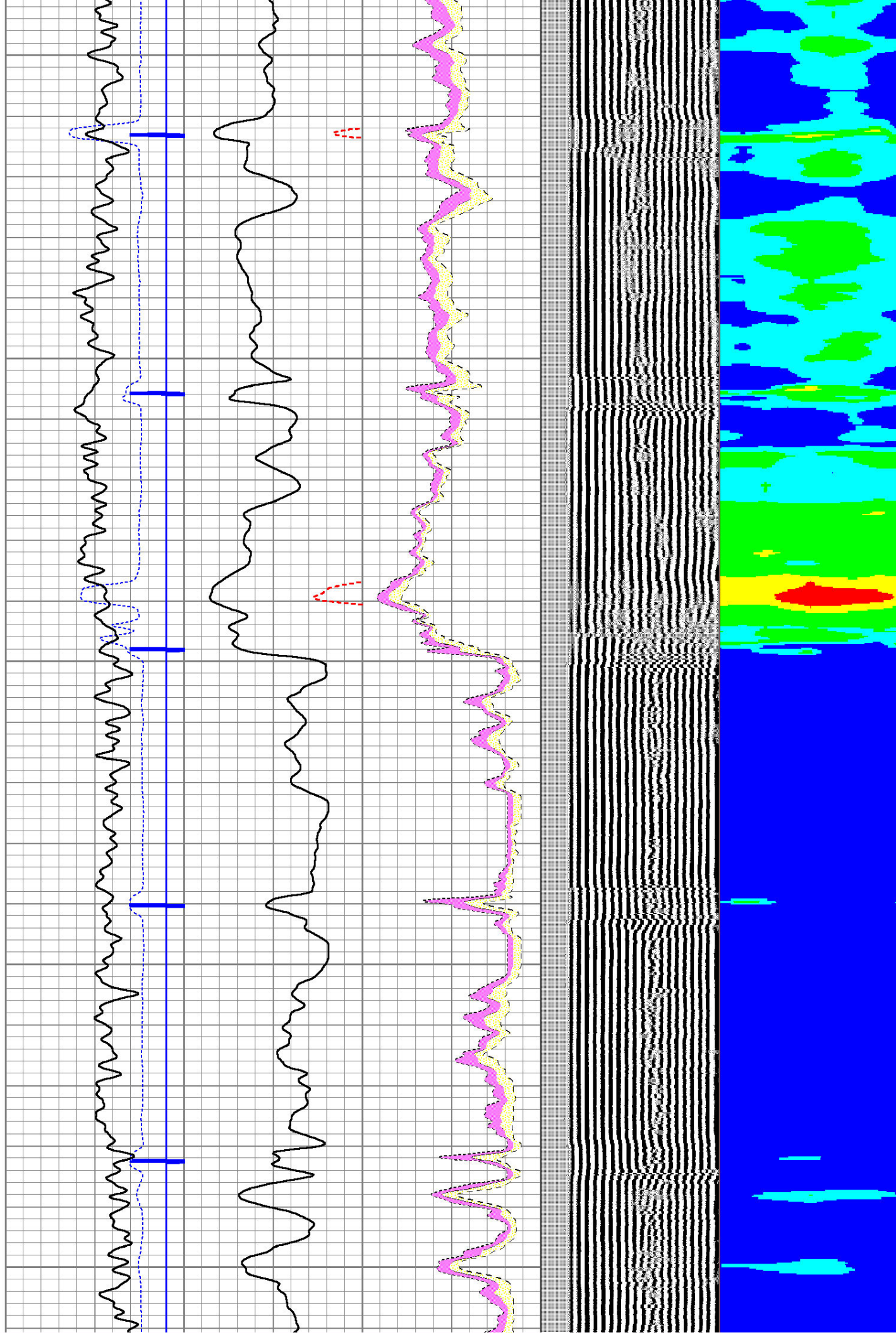
3450

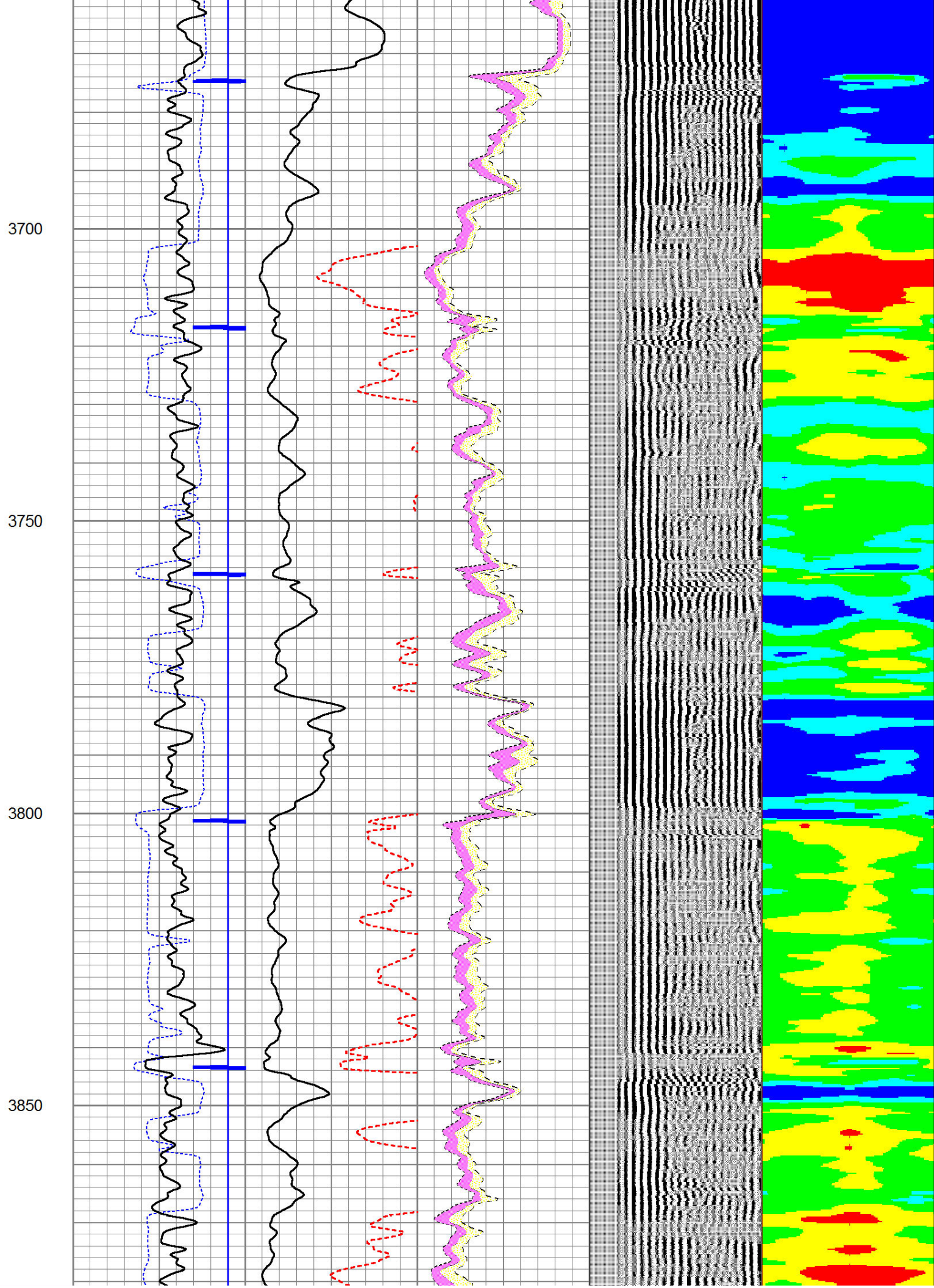
3500

3550

3600

3650





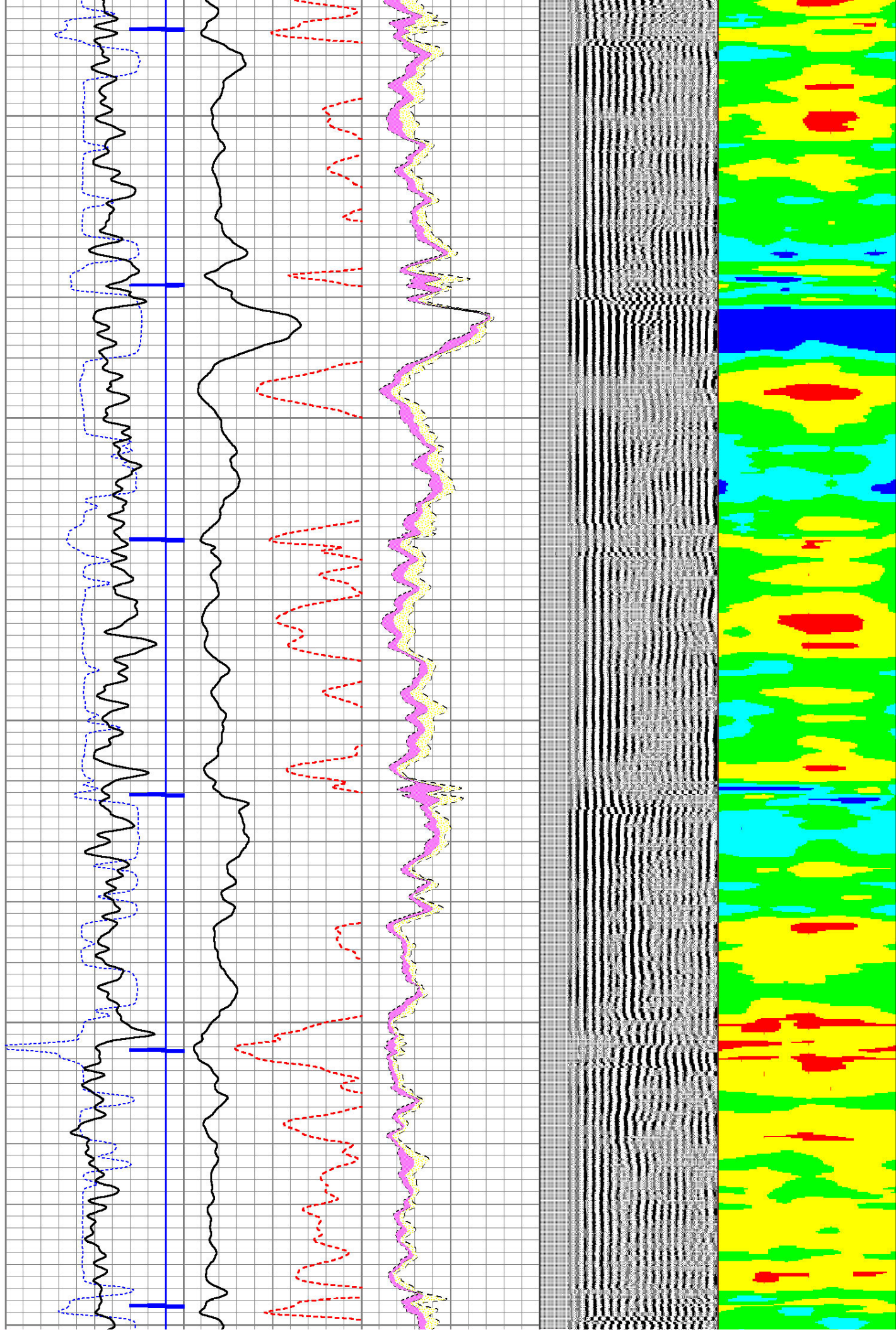
3900

3950

4000

4050

4100



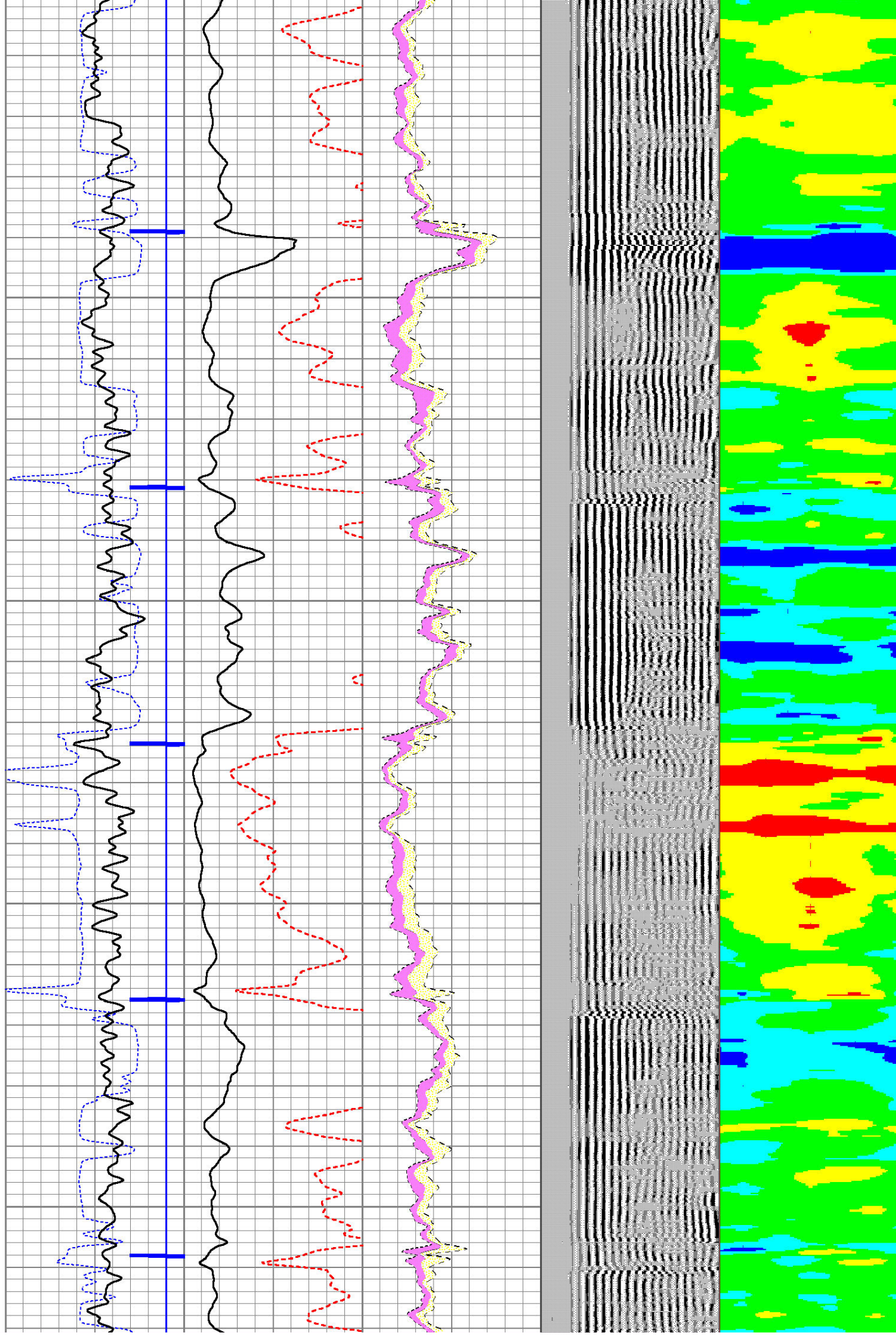
4100

4150

4200

4250

4300

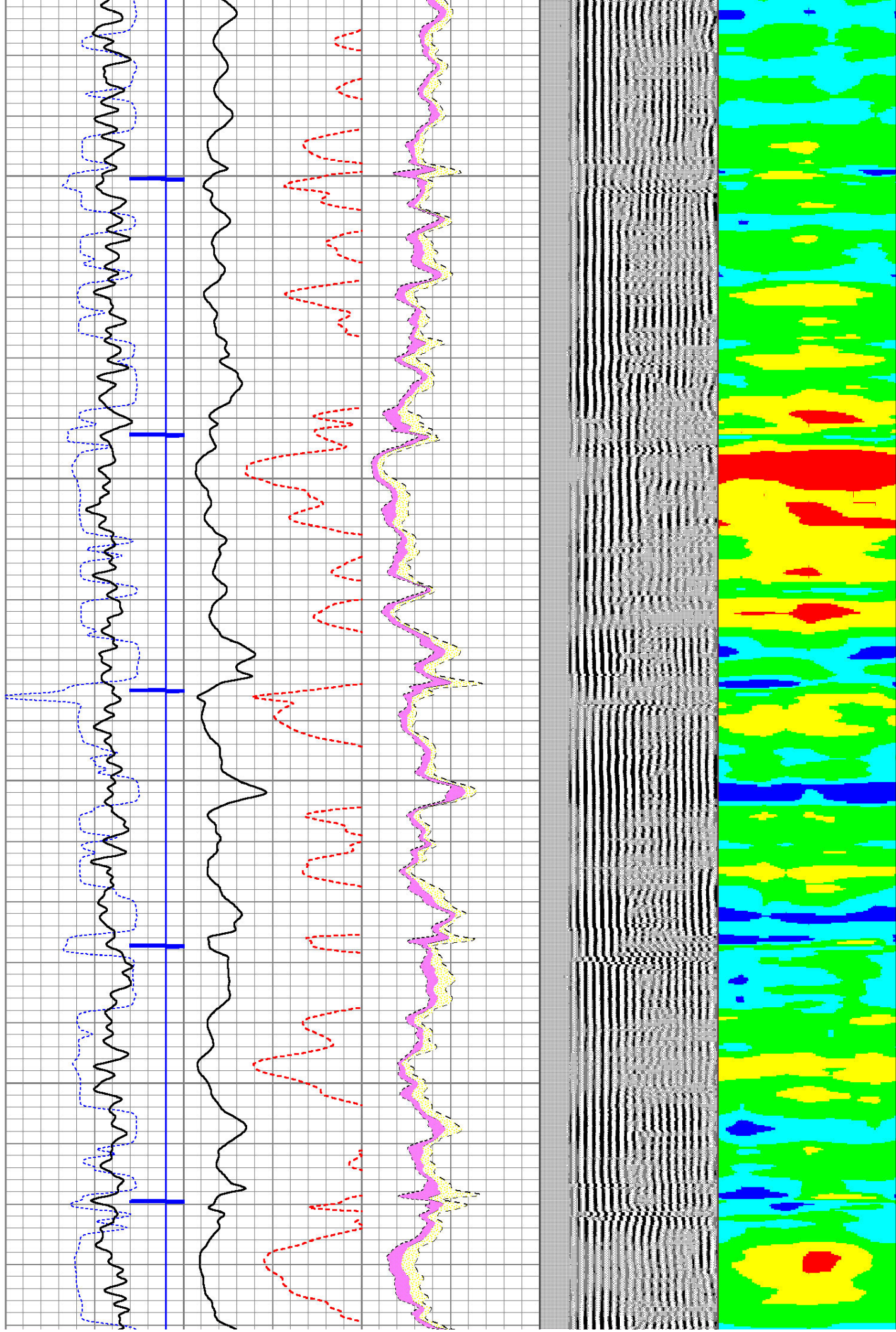


4350

4400

4450

4500



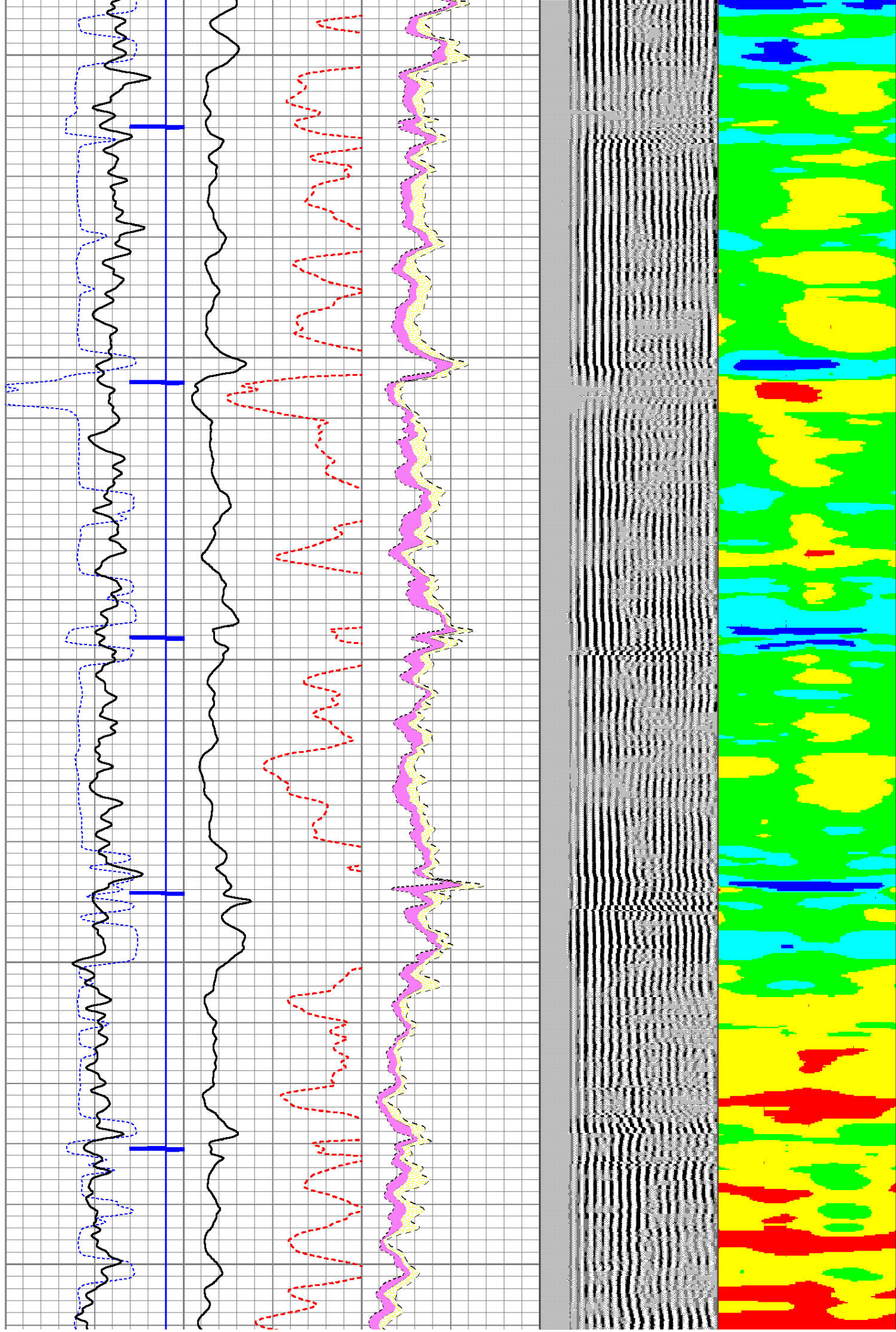
4550

4600

4650

4700

4750

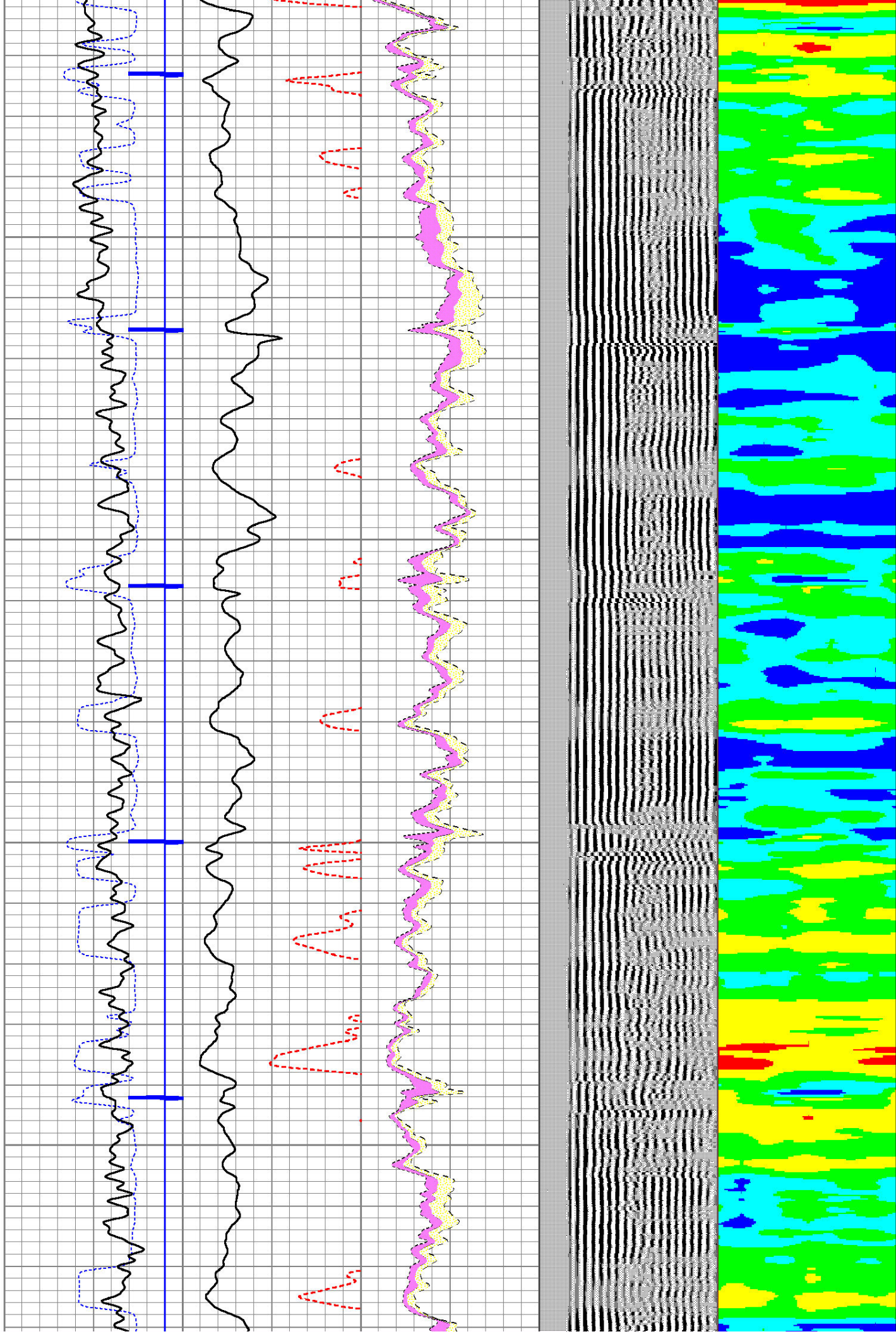


4800

4850

4900

4950



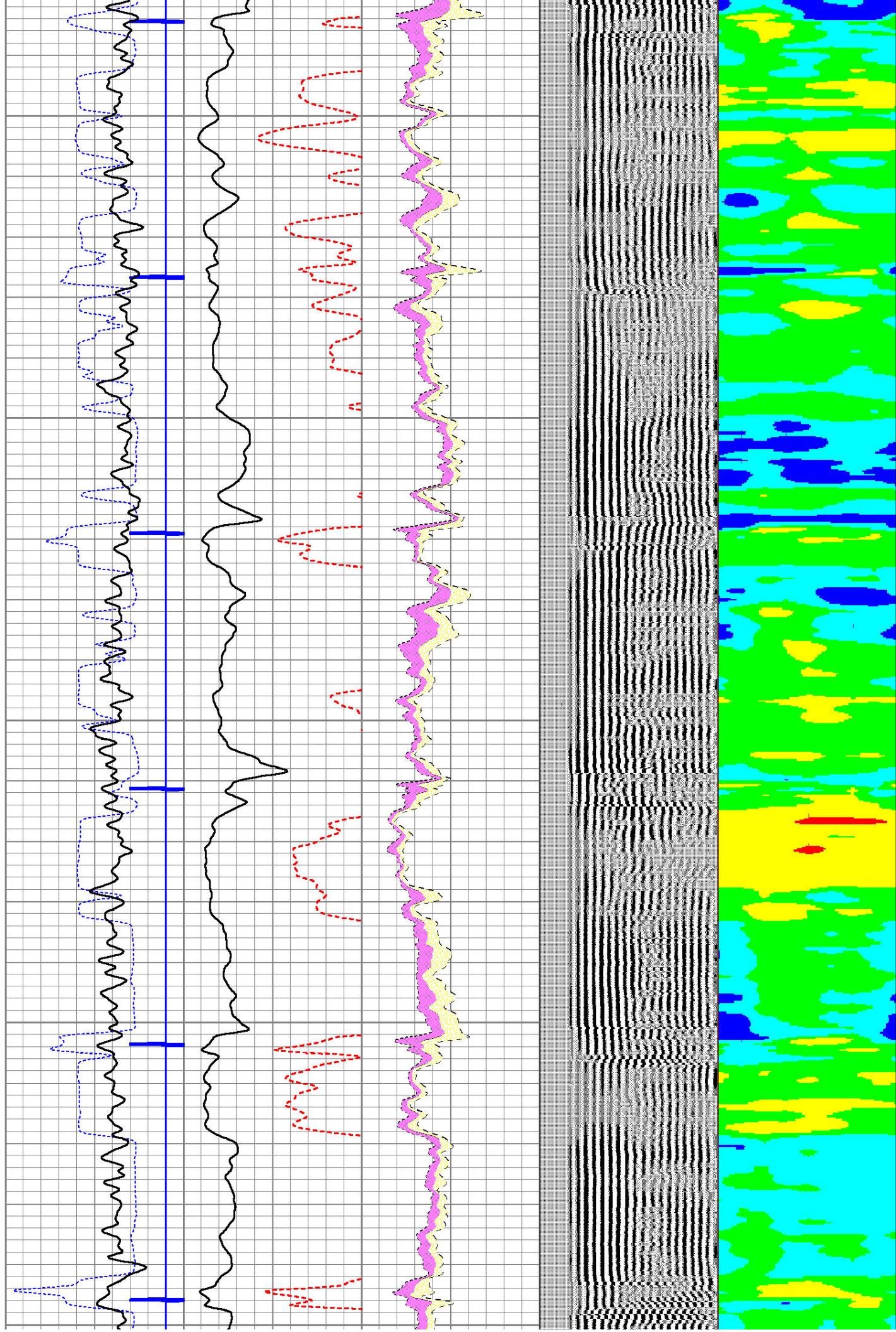
5000

5050

5100

5150

5200

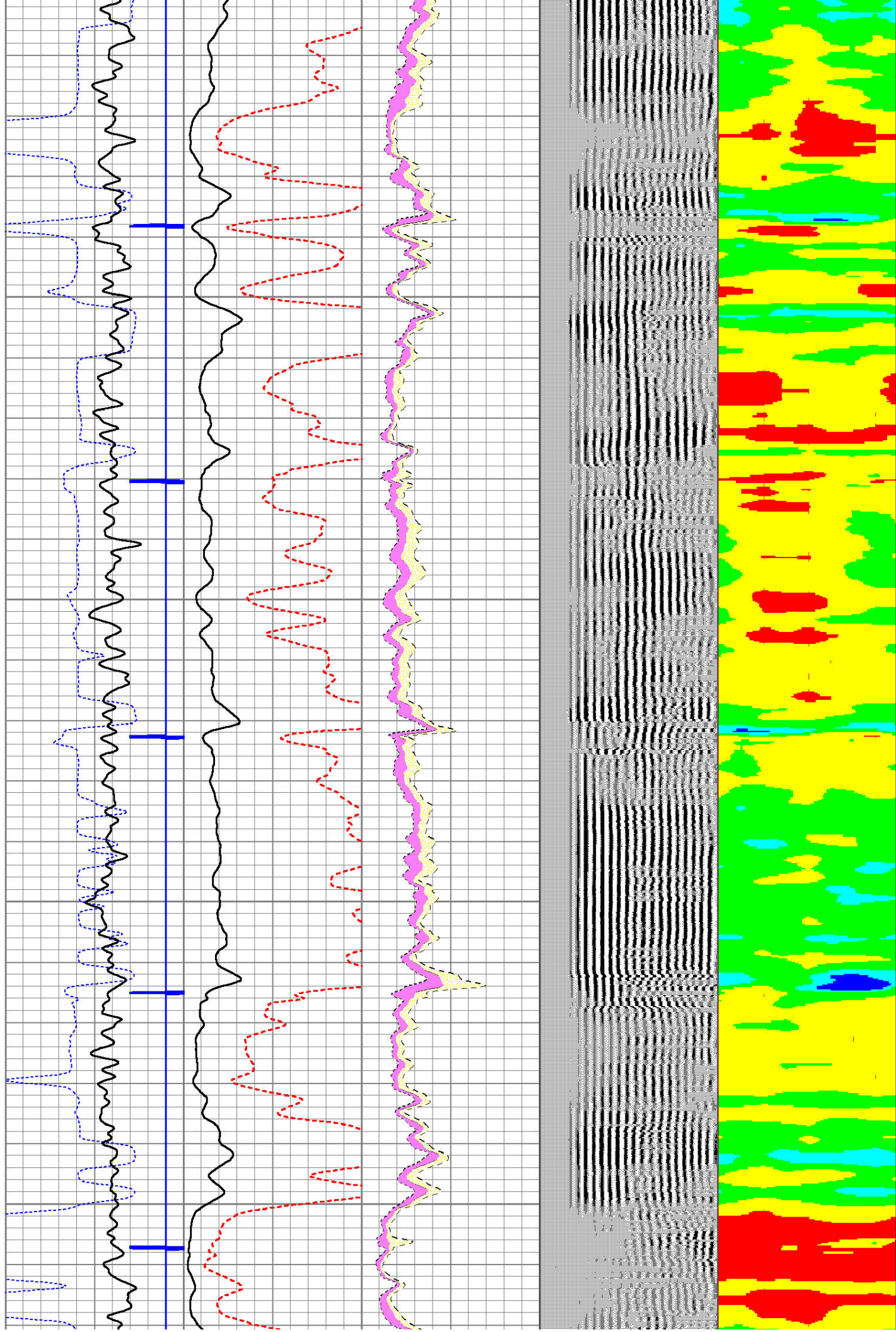


5250

5300

5350

5400

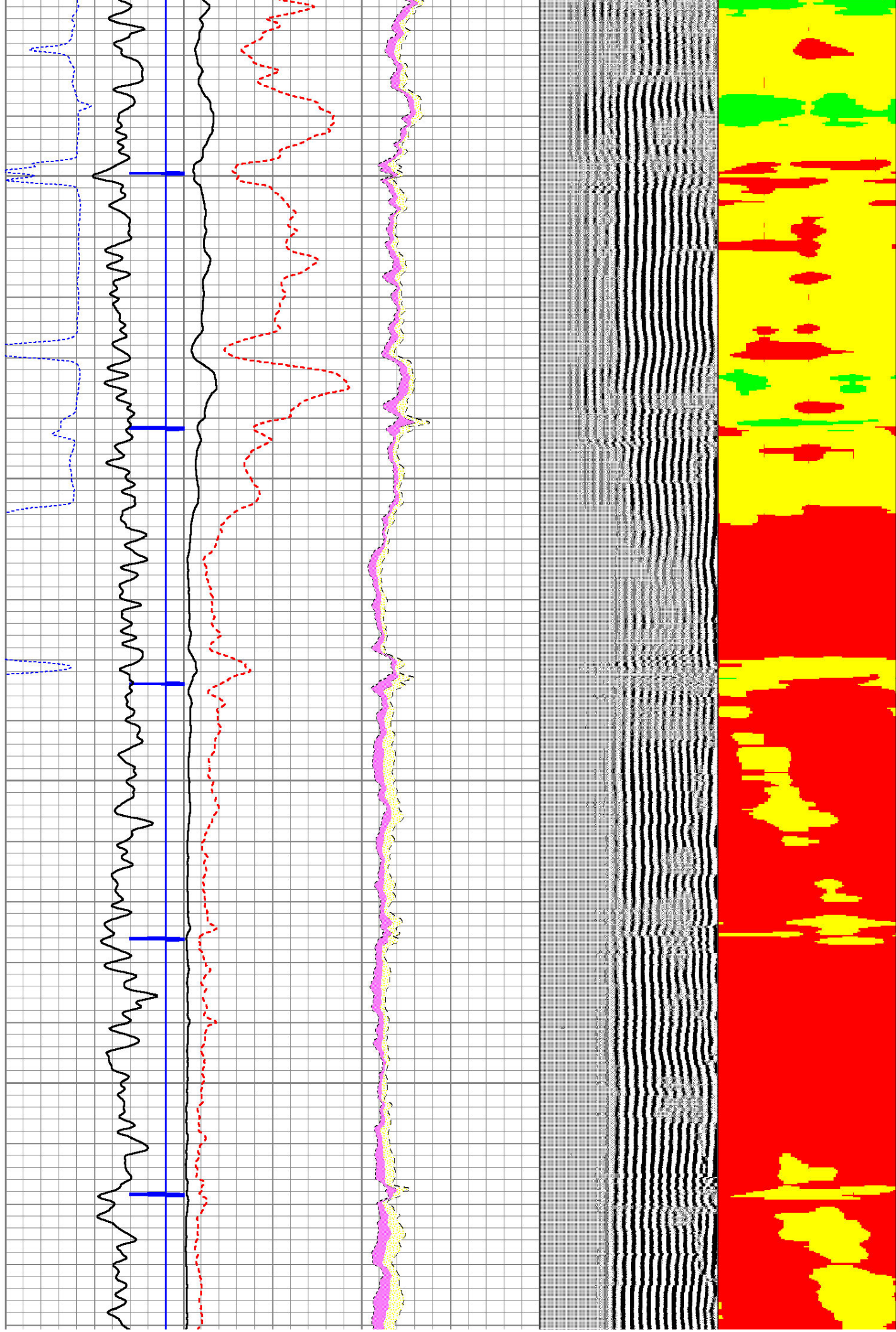


5450

5500

5550

5600



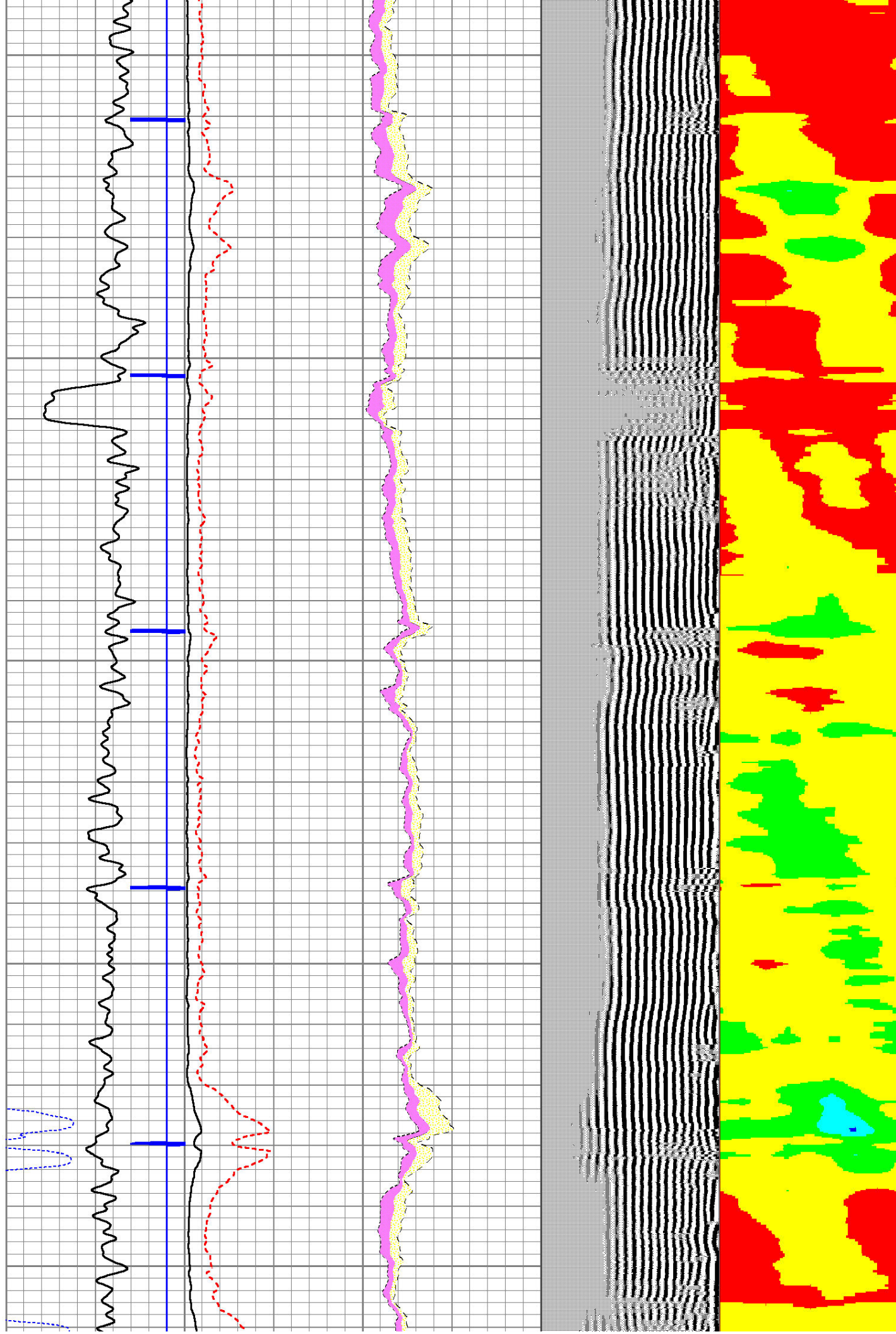
5650

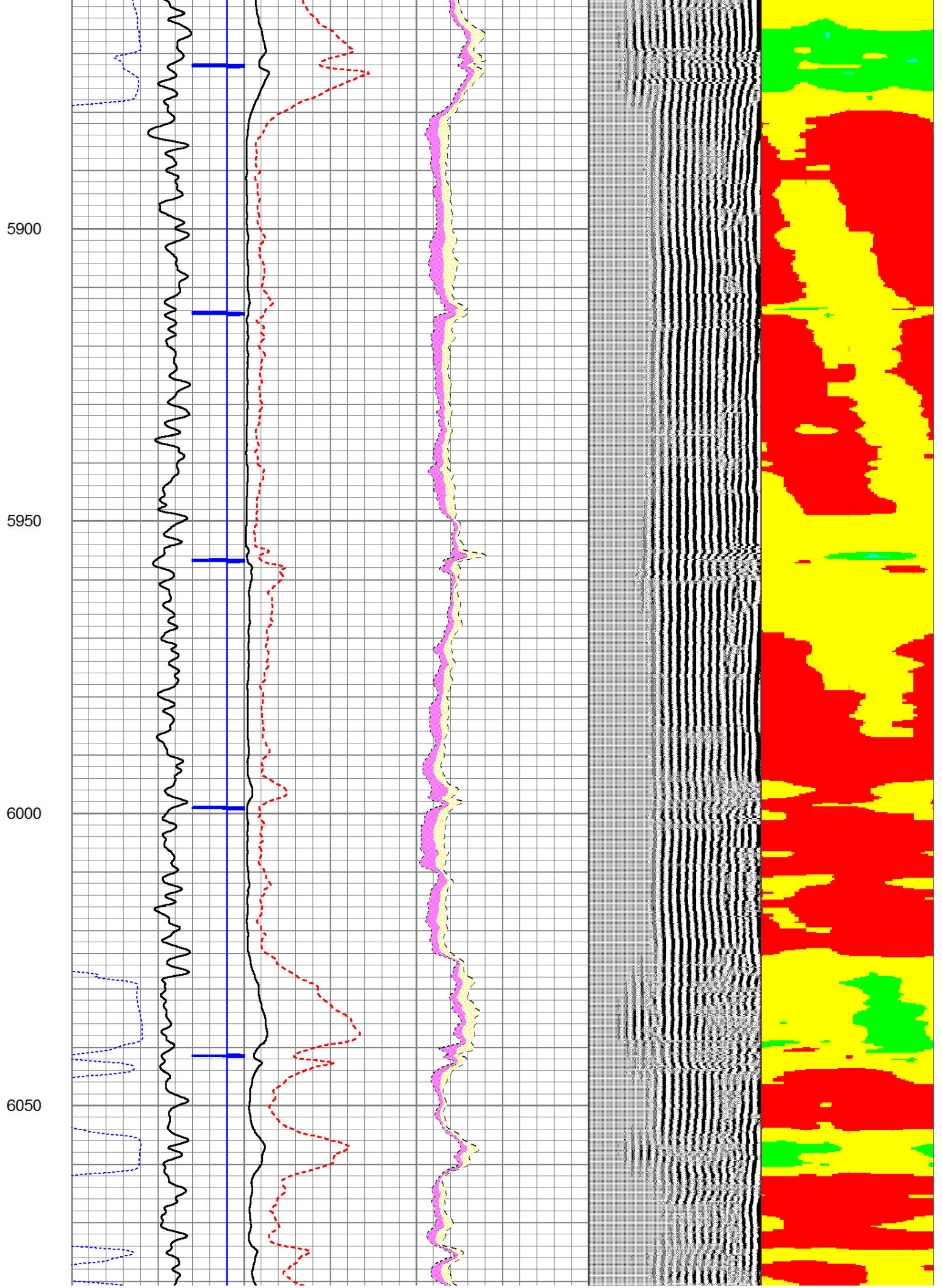
5700

5750

5800

5850





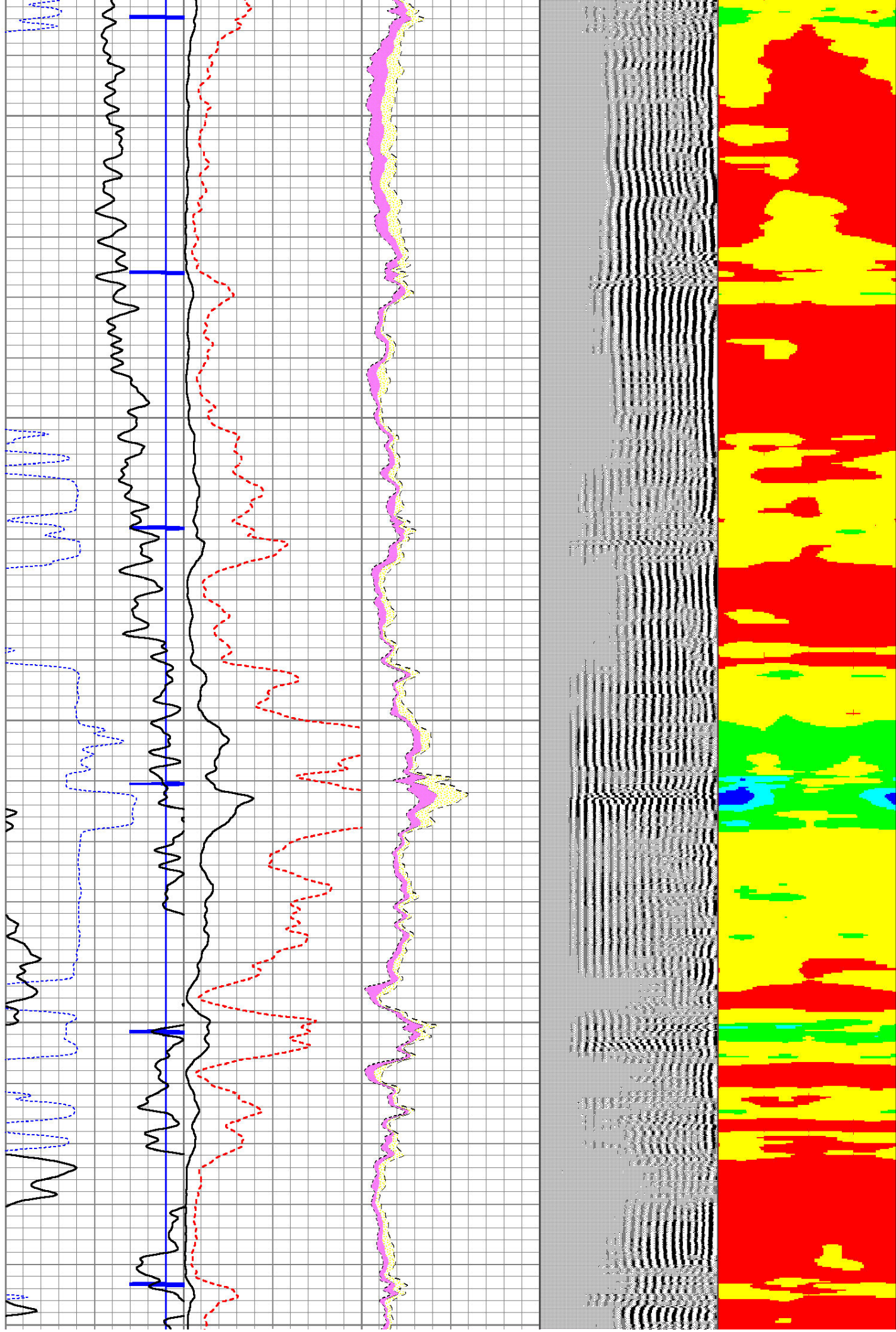
6100

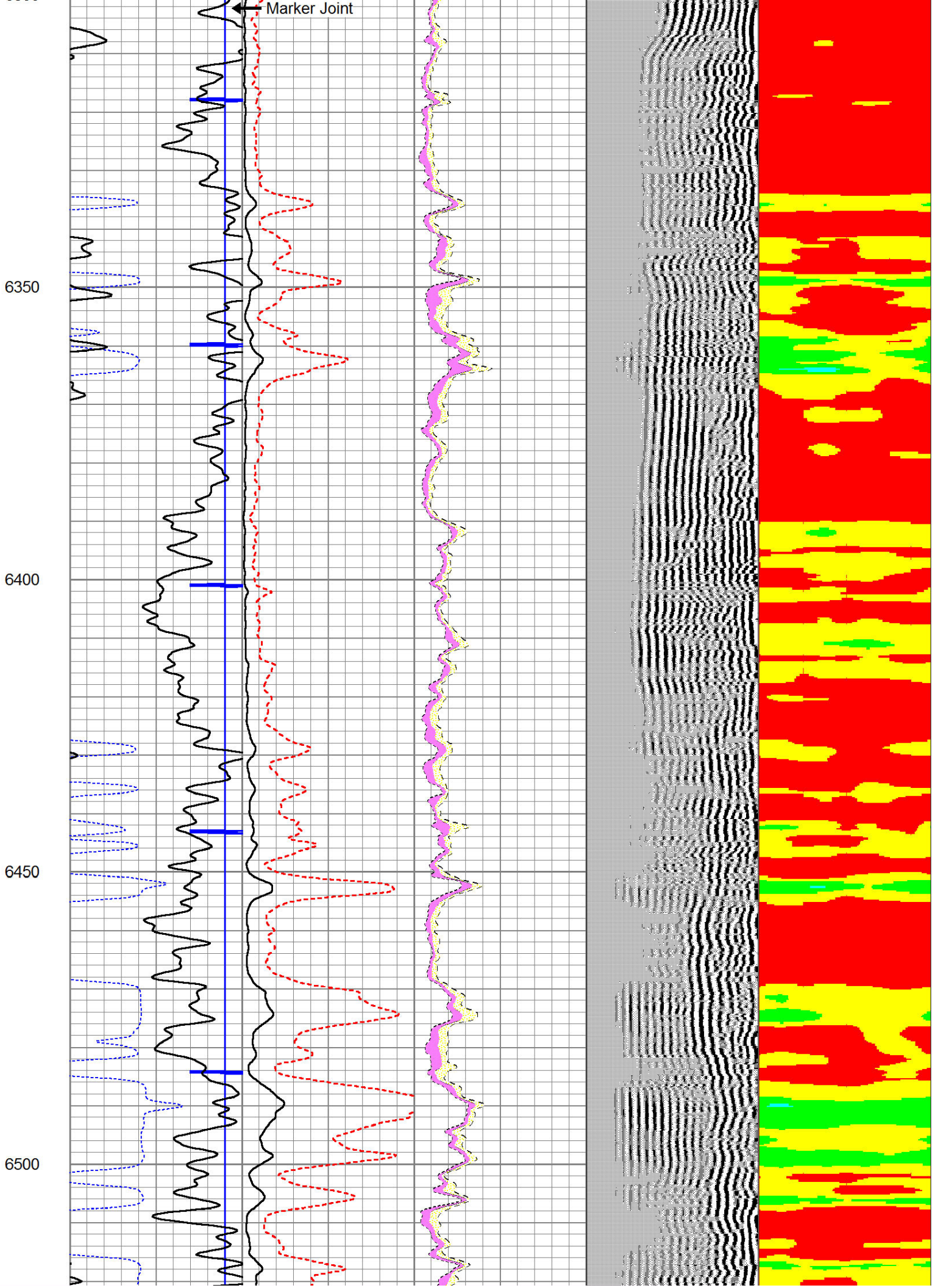
6150

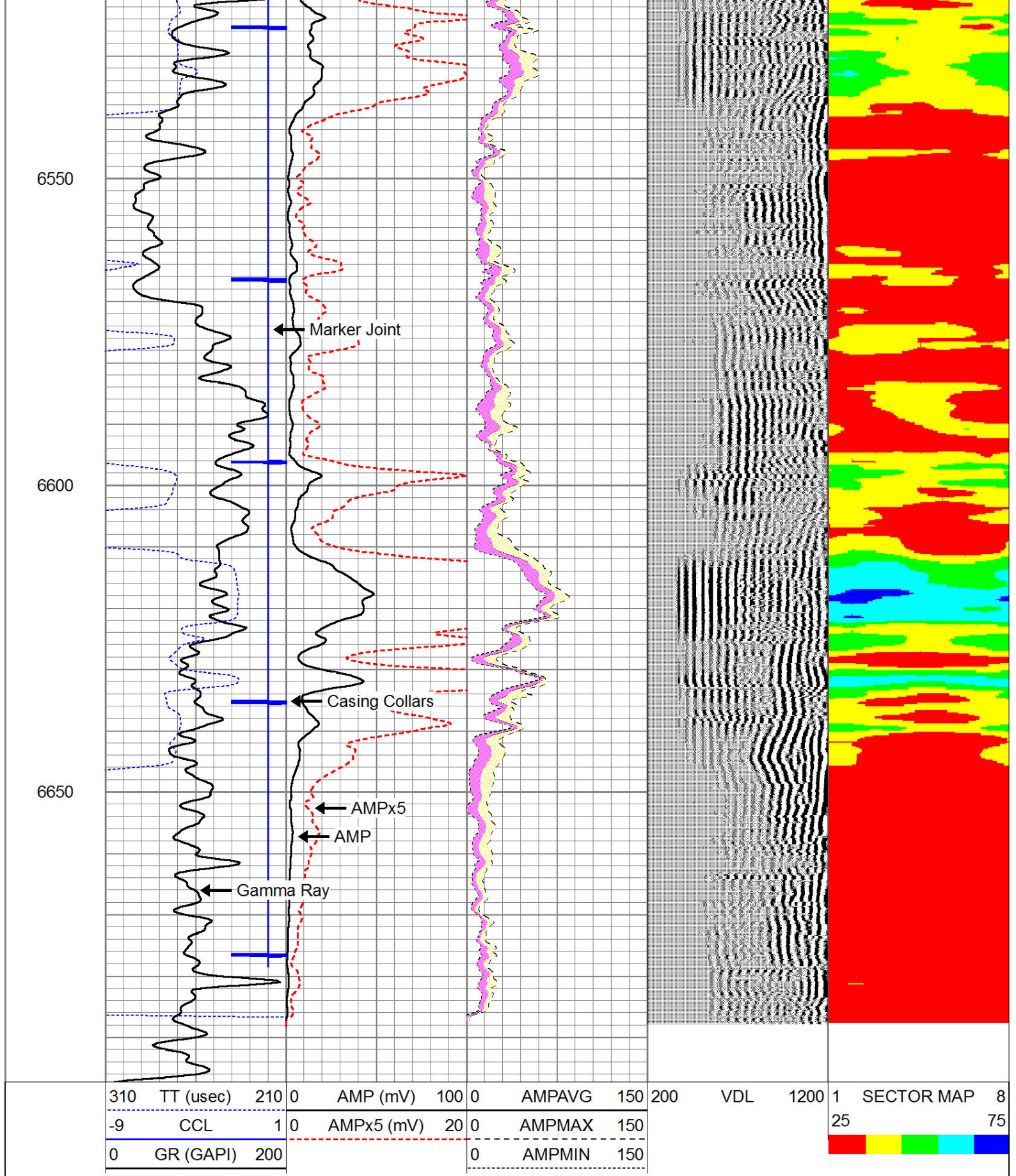
6200

6250

6300

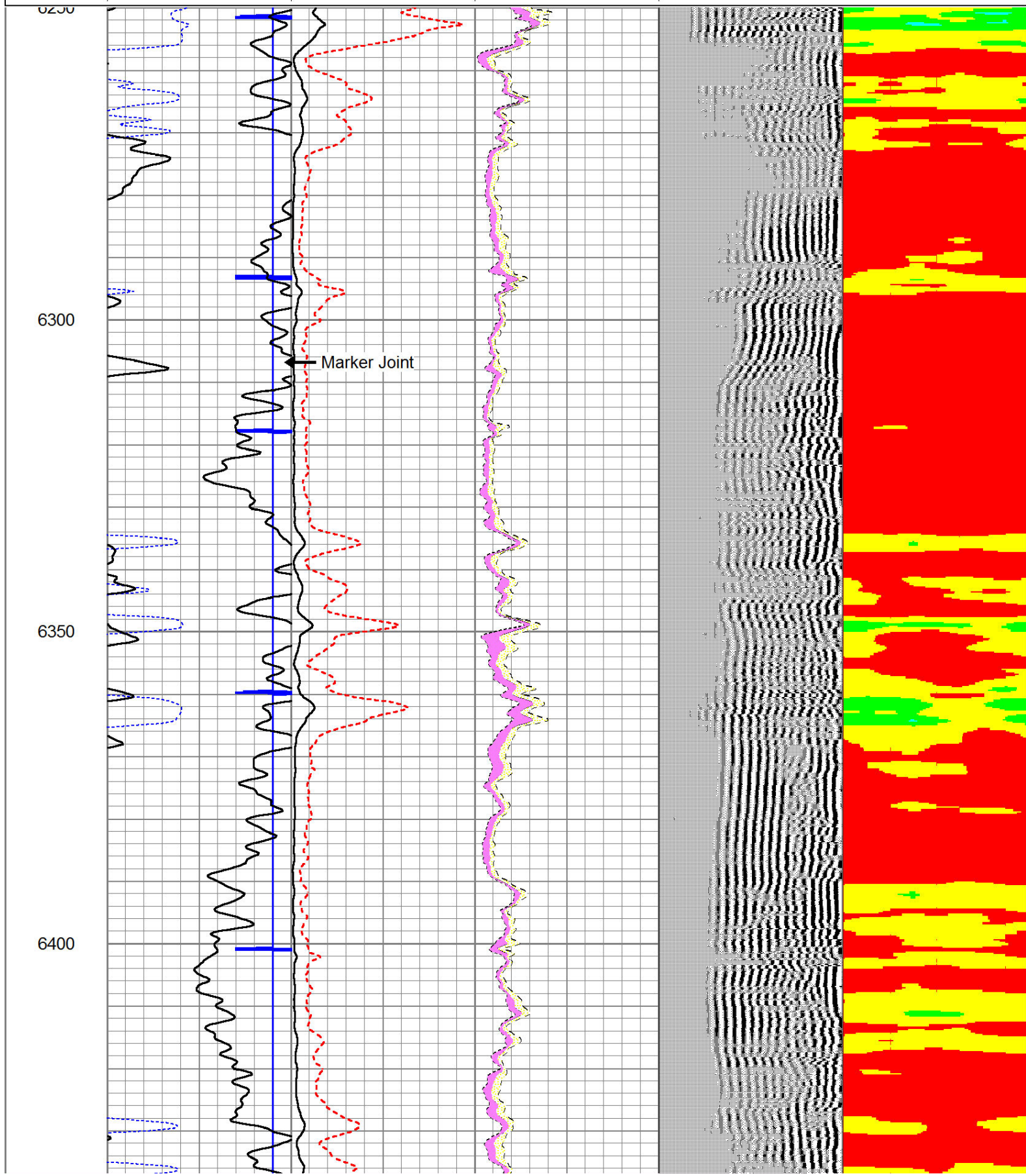






Database File: rothe 43-30.db
Dataset Pathname: pass2
Presentation Format: scbl02
Dataset Creation: Fri Nov 18 20:55:30 2011 by Log Std Casedhole 09061
Charted by: Depth in Feet scaled 1:240

	310	TT (usec)	210	0	AMP (mV)	100	0	AMPAVG	150	200	VDL	1200	1	SECTOR MAP	8
	-9	CCL	1	0	AMPx5 (mV)	20	0	AMPMAX	150				25		75
	0	GR (GAPI)	200				0	AMPMIN	150						



6450

6500

6550

6600

6650

