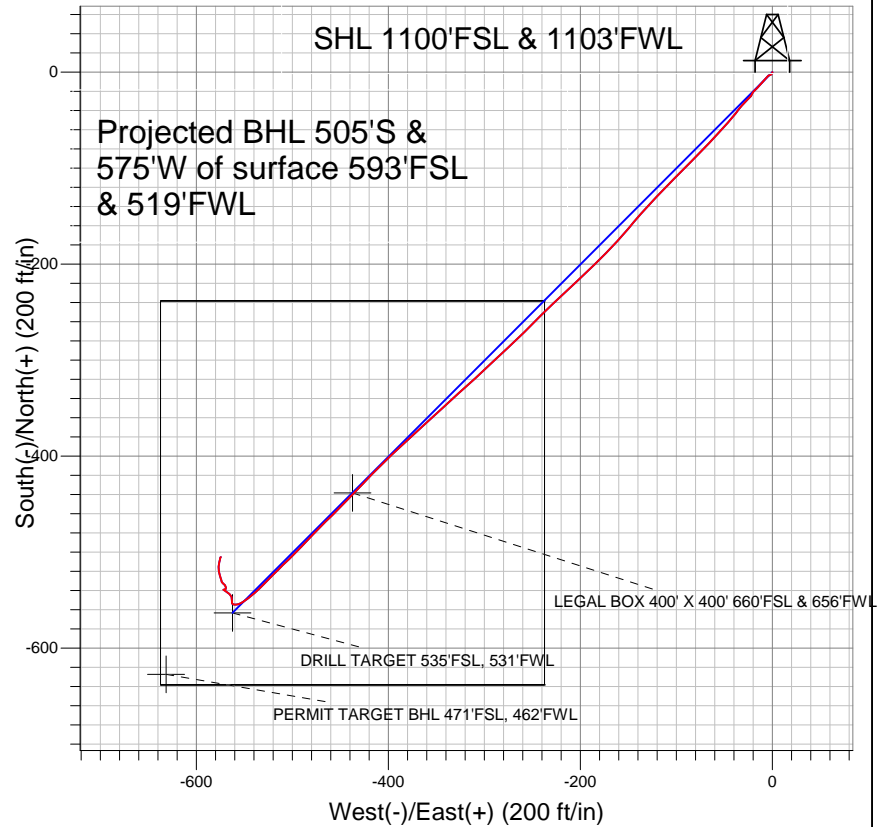


## Synergy Resources

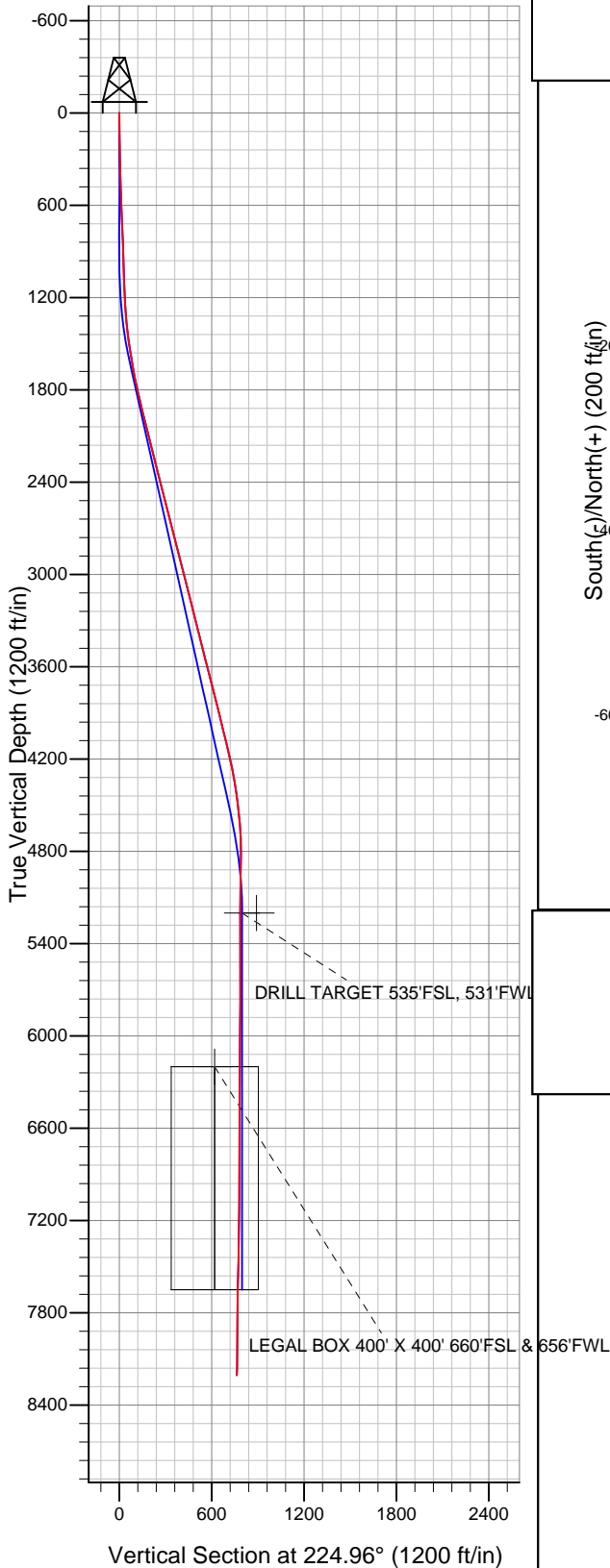


### LEGEND

- △ Pratt 14-29D, Wellbore #1, Plan #3 (3-8-11) V0
- Wellbore #1
- Survey #1

## Final Survey Plot

Projected Final Survey -  
8292'MD & 8205'TVD @ 764' VS  
0.8 deg Inc 26.5 deg AZ



Project: SEC.29-T1N-R68W  
Site: Pratt 24-29D Pad Sec.29-T1N-R68W  
Well: Pratt 14-29D  
Plan: Wellbore #1



# **Directional**

## **Synergy Resources**

**SEC.29-T1N-R68W**

**Pratt 24-29D Pad Sec.29-T1N-R68W**

**Pratt 14-29D**

**Wellbore #1**

**Survey: Survey #1**

## **Standard Survey Report**

**21 March, 2011**

Survey	Wellbore Data									
	Measured Depth (ft)	Inclination (°)	Azimuth (°)	Vertical Depth (ft)	+N/-S (ft)	+E/-W (ft)	Vertical Section (ft)	Dogleg Rate (°/100ft)	Build Rate (°/100ft)	Turn Rate (°/100ft)
Main Survey	0.0	0.00	0.00	0.0	0.0	0.0	0.0	0.00	0.00	0.00
	126.0	1.00	198.40	126.0	-1.0	-0.3	1.0	0.79	0.79	0.00
	309.0	1.10	260.60	309.0	-2.8	-2.6	3.8	0.59	0.05	33.99
	493.0	1.80	215.90	492.9	-5.5	-6.0	8.1	0.69	0.38	-24.29
	683.0	2.40	222.20	682.8	-10.8	-10.4	15.0	0.34	0.32	3.32
	901.0	2.50	225.10	900.6	-17.6	-16.9	24.4	0.07	0.05	1.33
	953.0	2.20	228.70	952.5	-19.0	-18.4	26.5	0.64	-0.58	6.92
	1,086.0	1.50	201.80	1,085.5	-22.3	-21.0	30.6	0.82	-0.53	-20.23
	1,178.0	2.40	214.70	1,177.4	-25.0	-22.5	33.6	1.08	0.98	14.02
	1,272.0	4.20	228.00	1,271.3	-29.0	-26.2	39.0	2.07	1.91	14.15
	1,366.0	5.60	219.90	1,364.9	-34.8	-31.7	47.0	1.66	1.49	-8.62
	1,460.0	7.10	218.00	1,458.3	-42.9	-38.2	57.4	1.61	1.60	-2.02
	1,553.0	8.80	222.00	1,550.4	-52.7	-46.5	70.2	1.92	1.83	4.30

<b>Company:</b>	Synergy Resources	<b>Local Co-ordinate Reference:</b>	Well Pratt 14-29D
<b>Project:</b>	SEC.29-T1N-R68W	<b>TVD Reference:</b>	WELL @ 5154.0ft (Original Well Elev)
<b>Site:</b>	Pratt 24-29D Pad Sec.29-T1N-R68W	<b>MD Reference:</b>	WELL @ 5154.0ft (Original Well Elev)
<b>Well:</b>	Pratt 14-29D	<b>North Reference:</b>	True
<b>Wellbore:</b>	Wellbore #1	<b>Survey Calculation Method:</b>	Minimum Curvature
<b>Design:</b>	Wellbore #1	<b>Database:</b>	Landmark

## Survey

Measured Depth (ft)	Inclination (°)	Azimuth (°)	Vertical Depth (ft)	+N/-S (ft)	+E/-W (ft)	Vertical Section (ft)	Dogleg Rate (°/100ft)	Build Rate (°/100ft)	Turn Rate (°/100ft)
1,647.0	10.40	222.60	1,643.1	-64.3	-57.1	85.8	1.71	1.70	0.64
1,740.0	11.60	223.20	1,734.4	-77.3	-69.2	103.6	1.30	1.29	0.65
1,835.0	12.40	225.20	1,827.3	-91.4	-82.9	123.3	0.95	0.84	2.11
1,929.0	13.70	224.90	1,918.9	-106.4	-98.0	144.5	1.38	1.38	-0.32
2,023.0	14.20	223.60	2,010.1	-122.7	-113.8	167.2	0.63	0.53	-1.38
2,116.0	13.90	223.00	2,100.4	-139.1	-129.3	189.8	0.36	-0.32	-0.65
2,210.0	14.70	220.40	2,191.4	-156.4	-144.7	212.9	1.09	0.85	-2.77
2,304.0	14.20	221.20	2,282.5	-174.2	-160.0	236.3	0.57	-0.53	0.85
2,398.0	14.60	224.80	2,373.5	-191.3	-176.0	259.7	1.04	0.43	3.83
2,491.0	14.10	227.50	2,463.6	-207.2	-192.6	282.7	0.90	-0.54	2.90
2,585.0	13.30	226.00	2,554.9	-222.5	-208.8	305.0	0.93	-0.85	-1.60
2,678.0	14.00	226.90	2,645.3	-237.6	-224.7	326.9	0.79	0.75	0.97
2,772.0	14.70	225.10	2,736.4	-253.8	-241.5	350.2	0.88	0.74	-1.91
2,866.0	14.80	225.00	2,827.3	-270.7	-258.4	374.1	0.11	0.11	-0.11
2,960.0	14.60	228.20	2,918.2	-287.1	-275.7	398.0	0.89	-0.21	3.40
3,053.0	14.40	226.00	3,008.2	-302.9	-292.8	421.2	0.63	-0.22	-2.37
3,147.0	14.30	227.30	3,099.3	-318.9	-309.7	444.5	0.36	-0.11	1.38
3,241.0	14.30	227.50	3,190.4	-334.6	-326.8	467.7	0.05	0.00	0.21
3,335.0	14.20	228.20	3,281.5	-350.2	-344.0	490.8	0.21	-0.11	0.74
3,429.0	14.50	227.00	3,372.6	-365.9	-361.2	514.1	0.45	0.32	-1.28
3,522.0	13.80	228.40	3,462.8	-381.2	-378.0	536.8	0.84	-0.75	1.51
3,616.0	14.20	226.30	3,554.0	-396.6	-394.7	559.5	0.69	0.43	-2.23
3,710.0	14.40	223.60	3,645.0	-413.0	-411.1	582.7	0.74	0.21	-2.87
3,803.0	14.00	225.00	3,735.2	-429.4	-427.0	605.5	0.57	-0.43	1.51
3,897.0	13.70	223.90	3,826.5	-445.4	-442.8	628.0	0.42	-0.32	-1.17
3,991.0	14.40	225.20	3,917.7	-461.7	-458.8	650.9	0.82	0.74	1.38
4,084.0	13.60	225.00	4,007.9	-477.6	-474.7	673.4	0.86	-0.86	-0.22
4,178.0	13.40	222.40	4,099.3	-493.4	-489.9	695.3	0.68	-0.21	-2.77
4,272.0	13.20	226.70	4,190.8	-508.8	-505.0	716.9	1.07	-0.21	4.57
4,365.0	10.80	224.30	4,281.7	-522.3	-518.8	736.2	2.64	-2.58	-2.58
4,459.0	8.70	225.00	4,374.4	-533.7	-530.0	752.1	2.24	-2.23	0.74
4,553.0	7.50	228.90	4,467.4	-542.7	-539.7	765.4	1.40	-1.28	4.15
4,647.0	6.20	233.50	4,560.8	-549.8	-548.4	776.5	1.50	-1.38	4.89
4,741.0	4.20	250.90	4,654.4	-553.9	-555.7	784.6	2.69	-2.13	18.51
4,835.0	2.20	282.00	4,748.2	-554.7	-560.7	788.7	2.74	-2.13	33.09
4,929.0	1.10	336.40	4,842.2	-553.5	-562.9	789.4	1.91	-1.17	57.87
5,116.0	1.20	13.00	5,029.2	-549.9	-563.1	787.0	0.39	0.05	19.57
5,285.5	0.90	335.39	5,198.7	-547.0	-563.3	785.1	0.43	-0.18	-22.19
<b>PERMIT TARGET BHL 471'FSL, 462'FWL</b>									
5,286.6	0.90	335.10	5,199.7	-547.0	-563.3	785.1	0.43	-0.03	-27.46
<b>DRILL TARGET 535'FSL, 531'FWL</b>									
5,304.0	0.90	330.30	5,217.1	-546.7	-563.4	785.0	0.43	-0.01	-27.54
5,491.0	1.40	317.90	5,404.1	-543.8	-565.7	784.5	0.30	0.27	-6.63
5,679.0	2.00	299.40	5,592.0	-540.4	-570.1	785.2	0.43	0.32	-9.84
5,867.0	0.90	103.20	5,780.0	-539.2	-571.5	785.3	1.53	-0.59	87.13
6,055.0	0.50	24.50	5,968.0	-538.8	-569.7	783.8	0.50	-0.21	-41.86
6,242.0	0.60	3.70	6,155.0	-537.0	-569.3	782.3	0.12	0.05	-11.12
6,287.6	0.68	349.11	6,200.6	-536.5	-569.4	782.0	0.40	0.18	-31.99
<b>LEGAL BOX 400' X 400' 660'FSL &amp; 656'FWL</b>									
6,429.0	1.10	323.90	6,342.0	-534.6	-570.3	781.3	0.40	0.30	-17.83
6,616.0	0.60	298.30	6,528.9	-532.7	-572.2	781.3	0.33	-0.27	-13.69
6,804.0	0.70	333.20	6,716.9	-531.2	-573.6	781.2	0.21	0.05	18.56
6,992.0	0.90	351.60	6,904.9	-528.7	-574.4	780.0	0.17	0.11	9.79
7,179.0	1.50	338.10	7,091.9	-525.0	-575.5	778.1	0.35	0.32	-7.22

<b>Company:</b>	Synergy Resources	<b>Local Co-ordinate Reference:</b>	Well Pratt 14-29D
<b>Project:</b>	SEC.29-T1N-R68W	<b>TVD Reference:</b>	WELL @ 5154.0ft (Original Well Elev)
<b>Site:</b>	Pratt 24-29D Pad Sec.29-T1N-R68W	<b>MD Reference:</b>	WELL @ 5154.0ft (Original Well Elev)
<b>Well:</b>	Pratt 14-29D	<b>North Reference:</b>	True
<b>Wellbore:</b>	Wellbore #1	<b>Survey Calculation Method:</b>	Minimum Curvature
<b>Design:</b>	Wellbore #1	<b>Database:</b>	Landmark

Survey										
Measured Depth (ft)	Inclination (°)	Azimuth (°)	Vertical Depth (ft)	+N/-S (ft)	+E/-W (ft)	Vertical Section (ft)	Dogleg Rate (°/100ft)	Build Rate (°/100ft)	Turn Rate (°/100ft)	
7,366.0	1.50	352.80	7,278.8	-520.3	-576.7	775.7	0.21	0.00	7.86	
7,553.0	1.60	0.90	7,465.7	-515.3	-577.0	772.3	0.13	0.05	4.33	
7,740.0	1.20	16.70	7,652.7	-510.8	-576.4	768.7	0.30	-0.21	8.45	
7,928.0	0.40	5.10	7,840.7	-508.2	-575.7	766.5	0.43	-0.43	-6.17	
8,115.0	0.40	13.60	8,027.6	-506.9	-575.5	765.4	0.03	0.00	4.55	
8,248.0	0.80	26.50	8,160.6	-505.7	-575.0	764.1	0.32	0.30	9.70	
8,292.0	0.80	26.50	8,204.6	-505.1	-574.7	763.5	0.00	0.00	0.00	

Checked By: _____	Approved By: _____	Date: _____
-------------------	--------------------	-------------