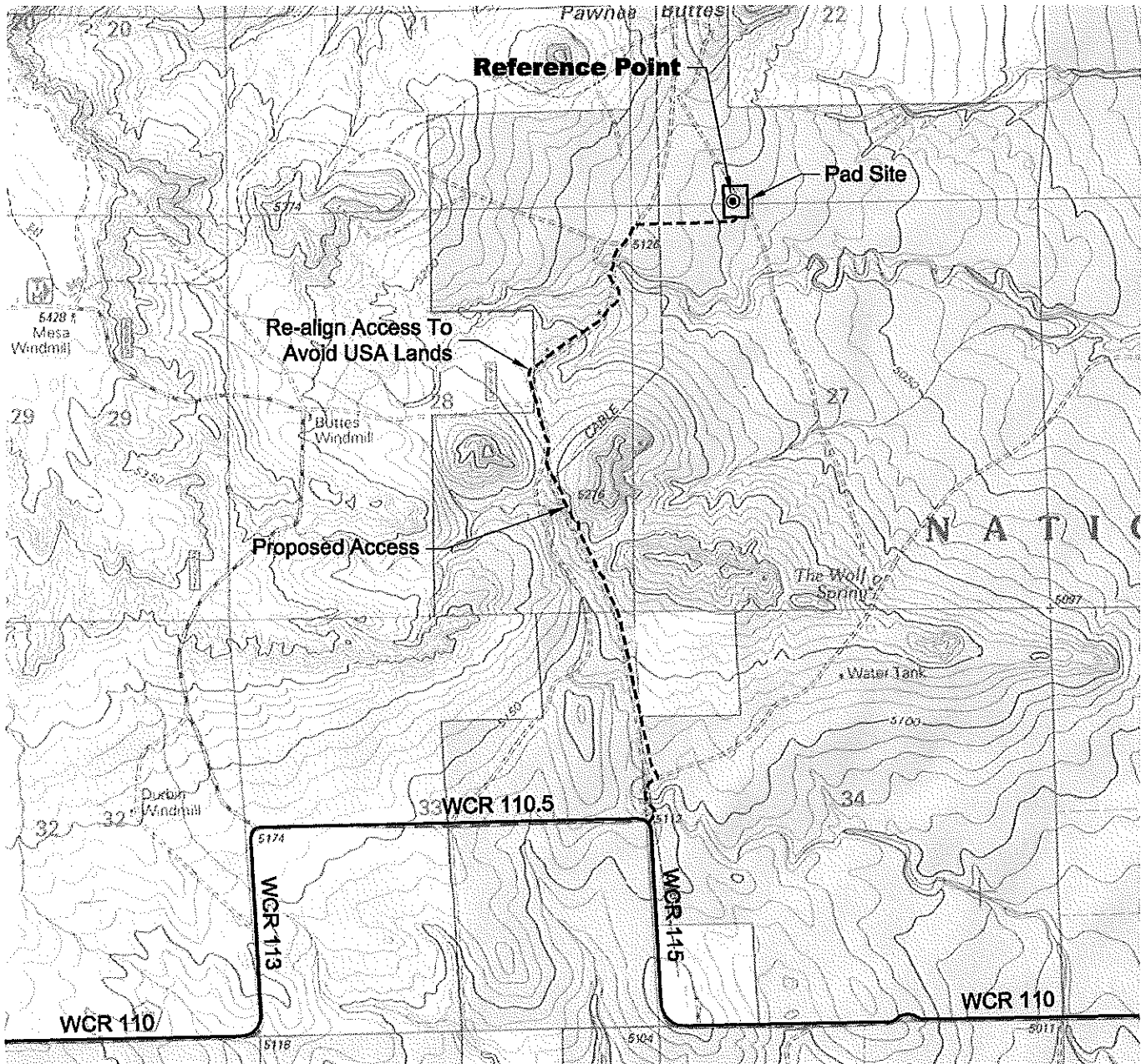


ACCESS ROAD MAP



DRIVING DIRECTIONS:

From Town of Keota, beginning at intersection of WCR 390 & WCR 103; North on WCR 390
 MP 3.5 Right on WCR 104
 MP 9.3 Left on WCR 111
 MP 12.3 Right on WCR 110
 MP 13.3 Left on WCR 113
 MP 13.8 Right on WCR 110.5
 MP 14.8 Left on Access to Nelson Ranches 22-14-10-59 Pad
 MP 16.8 Nelson Ranches 22-14-10-59 Pad

10/11/11



North

0 2000 4000

Graphic Scale in Feet
 1 Inch = 2000 feet



LAND SURVEYING AND MAPPING
 LAFAYETTE - WINTER PARK
 Ph 303 666 0379 Fx 303 665 6320

CARRIZO OIL & GAS, INC
NELSON RANCHES 22-14-10-59 PAD
SW1/4 SW1/4 SECTION 22 T10N R59W
6th PM WELD COUNTY COLORADO