

BILL BARRETT CORPORATION E-BILL  
DO NOT MAIL-1099 18TH ST,STE 2300W  
DENVER, Colorado

CBS 31B-21-692

PROPETRO

## **Post Job Summary**

### **Cement Surface Casing**

Prepared for: CASEY LAUER  
Date Prepared: 11/7/2011  
Version: 1

Service Supervisor: JAMISON, PRICE

Submitted by:

**HALLIBURTON**

## The Road to Excellence Starts with Safety

The Road to Excellence Starts With Safety			
Sold To #: 343492	Ship To #: 2889245	Quote #:	Sales Order #: 9043540
Customer: BILL BARRETT CORPORATION E-BILL		Customer Rep: Lauer, Casey	
Well Name: CBS		Well #: 31B-21-692	API/UWI #: 05-045-20122
Field: MAMM CREEK	City (SAP): SILT	County/Parish: Garfield	State: Colorado
Lat: N 39.519 deg. OR N 39 deg. 31 min. 6.802 secs.		Long: W 107.561 deg. OR W -108 deg. 26 min. 19.374 secs.	
Contractor: PROPETRO		Rig/Platform Name/Num: PROPETRO	
Job Purpose: Cement Surface Casing			
Well Type: Development Well		Job Type: Cement Surface Casing	
Sales Person: METLI, MARSHALL		Srv Supervisor: JAMISON, PRICE	MBU ID Emp #: 229155

## Job Personnel

HES Emp Name	Exp Hrs	Emp #	HES Emp Name	Exp Hrs	Emp #	HES Emp Name	Exp Hrs	Emp #
DEUSSEN, EDWARD Eric	9.5	485182	JAMISON, PRICE W	9.5	229155	JENSEN, SHANE Lynn	9.5	441759
VANALSTYNE, TROY L	9.5	420256						

## Equipment

HES Unit #	Distance-1 way	HES Unit #	Distance-1 way	HES Unit #	Distance-1 way	HES Unit #	Distance-1 way
10784064	120 mile	11006314	120 mile	11560046	120 mile	11562538	120 mile
11583934	120 mile						

## Job Hours

Date	On Location Hours	Operating Hours	Date	On Location Hours	Operating Hours	Date	On Location Hours	Operating Hours
11/7/11	9.5	3						

TOTAL		Total is the sum of each column separately
-------	--	--

## Job

## Job Times

Formation Name										Date	Time	Time Zone
Formation Depth (MD)		Top			Bottom				Called Out	07 - Nov - 2011	06:00	MST
Form Type					BHST				On Location	07 - Nov - 2011	13:00	MST
Job depth MD		820.4 ft			Job Depth TVD		840. ft		Job Started	07 - Nov - 2011	19:36	MST
Water Depth					Wk Ht Above Floor		. ft		Job Completed	07 - Nov - 2011	20:21	MST
Perforation Depth (MD)		From			To				Departed Loc	07 - Nov - 2011	21:30	MST

## Well Data

Description	New / Used	Max pressure psig	Size in	ID in	Weight lbm/ft	Thread	Grade	Top MD ft	Bottom MD ft	Top TVD ft	Bottom TVD ft
OPEN HOLE				12.25				.	840.	.	840.
SURFACE CASING	Unknown		9.625	8.921	36.		J-55	.	820.4	.	820.4

Sales/Rental/3<sup>rd</sup> Party (HES)

Description	Qty	Qty uom	Depth	Supplier
PLUG,CMTG,TOP,9 5/8,HWE,8.16 MIN/9.06 MA	1	EA		

## Tools and Accessories

Type	Size	Qty	Make	Depth	Type	Size	Qty	Make	Depth	Type	Size	Qty	Make
Guide Shoe					Packer					Top Plug			
Float Shoe					Bridge Plug					Bottom Plug			
Float Collar					Retainer					SSR plug set			
Insert Float										Plug Container			
Stage Tool										Centralizers			

## Miscellaneous Materials

Gelling Agt	Conc	Surfactant	Conc	Acid Type	Qty	Conc	%
Treatment Fld	Conc	Inhibitor	Conc	Sand Type	Size	Qty	

## Fluid Data

Stage/Plug #: 1

Fluid #	Stage Type	Fluid Name	Qty	Qty uom	Mixing Density lbm/gal	Yield ft <sup>3</sup> /sk	Mix Fluid Gal/sk	Rate bbl/min	Total Mix Fluid Gal/sk
1	WATER SPACER		20.00	bbl	8.4	.0	.0	6.0	
2	VersaCem	VERSACEM (TM) SYSTEM (452010)	120.0	sacks	12.3	2.38	13.77	6.0	13.77
	13.77 Gal	FRESH WATER							
3	SwiftCem	SWIFTCEM (TM) SYSTEM (452990)	120.0	sacks	14.2	1.43	6.85	6.0	6.85
	6.85 Gal	FRESH WATER							
4	DISPLACEMENT		60.00	bbl	8.4			6.0	
Calculated Values		Pressures		Volumes					
Displacement	60	Shut In: Instant		Lost Returns	NO	Cement Slurry	81.5	Pad	
Top Of Cement	SURFACE	5 Min		Cement Returns	24	Actual Displacement	60	Treatment	
Frac Gradient		15 Min		Spacers	20	Load and Breakdown		Total Job	160
Rates									
Circulating	NONE	Mixing	6	Displacement	6	Avg. Job	6		
Cement Left In Pipe	Amount	44.15 ft	Reason	Shoe Joint					
Frac Ring # 1 @	ID	Frac ring # 2 @	ID	Frac Ring # 3 @	ID	Frac Ring # 4 @	ID		
The Information Stated Herein Is Correct				Customer Representative Signature					

*The Road to Excellence Starts with Safety*

Sold To #: 343492		Ship To #: 2889245		Quote #:		Sales Order #: 9043540	
Customer: BILL BARRETT CORPORATION E-BILL				Customer Rep: Lauer, Casey			
Well Name: CBS			Well #: 31B-21-692			API/UWI #: 05-045-20122	
Field: MAMM CREEK		City (SAP): SILT		County/Parish: Garfield			State: Colorado
Legal Description:							
Lat: N 39.519 deg. OR N 39 deg. 31 min. 6.802 secs.				Long: W 107.561 deg. OR W -108 deg. 26 min. 19.374 secs.			
Contractor: PROPETRO			Rig/Platform Name/Num: PROPETRO				
Job Purpose: Cement Surface Casing						Ticket Amount:	
Well Type: Development Well			Job Type: Cement Surface Casing				
Sales Person: METLI, MARSHALL			Srvc Supervisor: JAMISON, PRICE			MBU ID Emp #: 229155	

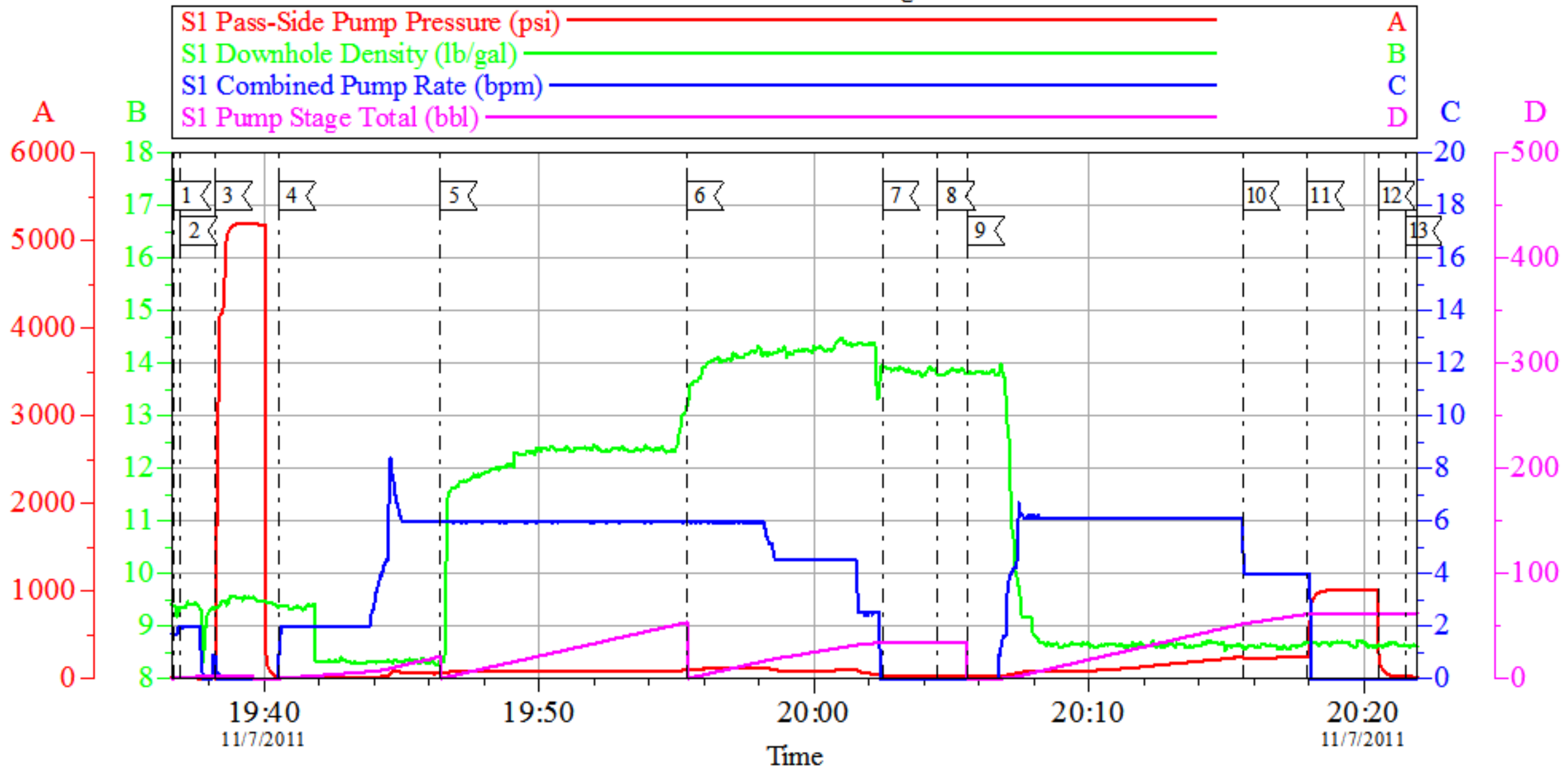
Activity Description	Date/Time	Cht #	Rate bbl/ min	Volume bbl		Pressure psig		Comments
				Stage	Total	Tubing	Casing	
Call Out	11/07/2011 03:00							TD 840 HOLE SIZE 12.25 TP 820.36 CASING 9.625 36 # J- 55 SHOE JOINT 44.15 NO MUD AIR MIST DRILLED
Depart Yard Safety Meeting	11/07/2011 10:50							
Crew Leave Yard	11/07/2011 11:00							
Arrive At Loc	11/07/2011 13:00							
Assessment Of Location Safety Meeting	11/07/2011 13:10							
Pre-Rig Up Safety Meeting	11/07/2011 18:00							
Pre-Job Safety Meeting	11/07/2011 19:00							
Start Job	11/07/2011 19:36							
Prime Pumps	11/07/2011 19:36		2	2			.0	FRESH WATER
Test Lines	11/07/2011 19:38						5000. 0	
Pump Spacer 1	11/07/2011 19:40		6	20			57.0	FRESH WATER
Pump Lead Cement	11/07/2011 19:46		6	50.9			87.0	MIXED @ 12.3 PPG YIELD 2.38 WAT/REQ 13.77 120 SKS
Pump Tail Cement	11/07/2011 19:55		6	30.6			123.0	MIXED @ 14.2 PPG YIELD 1.43 WAT/REQ 6.85 120 SKS
Shutdown	11/07/2011 20:02							
Activity Description	Date/Time	Cht	Rate bbl/ min	Volume bbl		Pressure psig		Comments

Sold To # : 343492      Ship To # : 2889245      Quote # :      Sales Order # : 9043540

		#		Stage	Total	Tubing	Casing	
Drop Plug	11/07/2011 20:05							
Pump Displacement	11/07/2011 20:06		6					FRESH WATER
Slow Rate	11/07/2011 20:15		4	50			243.0	
Bump Plug	11/07/2011 20:18		4	60			260.0	PRESSURE UP TO 1005 PSI
Check Floats	11/07/2011 20:20							FLOATS HELD
End Job	11/07/2011 20:21							CEMENT BACK TO SURFACE 24 BBLS
Post-Job Safety Meeting (Pre Rig-Down)	11/07/2011 20:25							GOT RETURNS ON DISPLACEMENT
Depart Location Safety Meeting	11/07/2011 21:20							CASING WAS NOT MOVED THROUGHOUT JOB
Crew Leave Location	11/07/2011 21:30							THANKS FOR USING HALLIBURTON BILL JAMISON & CREW

# Bill Barrett

## 9.625 Surface Casing



Customer: Bill Barrett  
 Well Description: CBS 31B-21-692  
 Company Rep: Casey Lauer

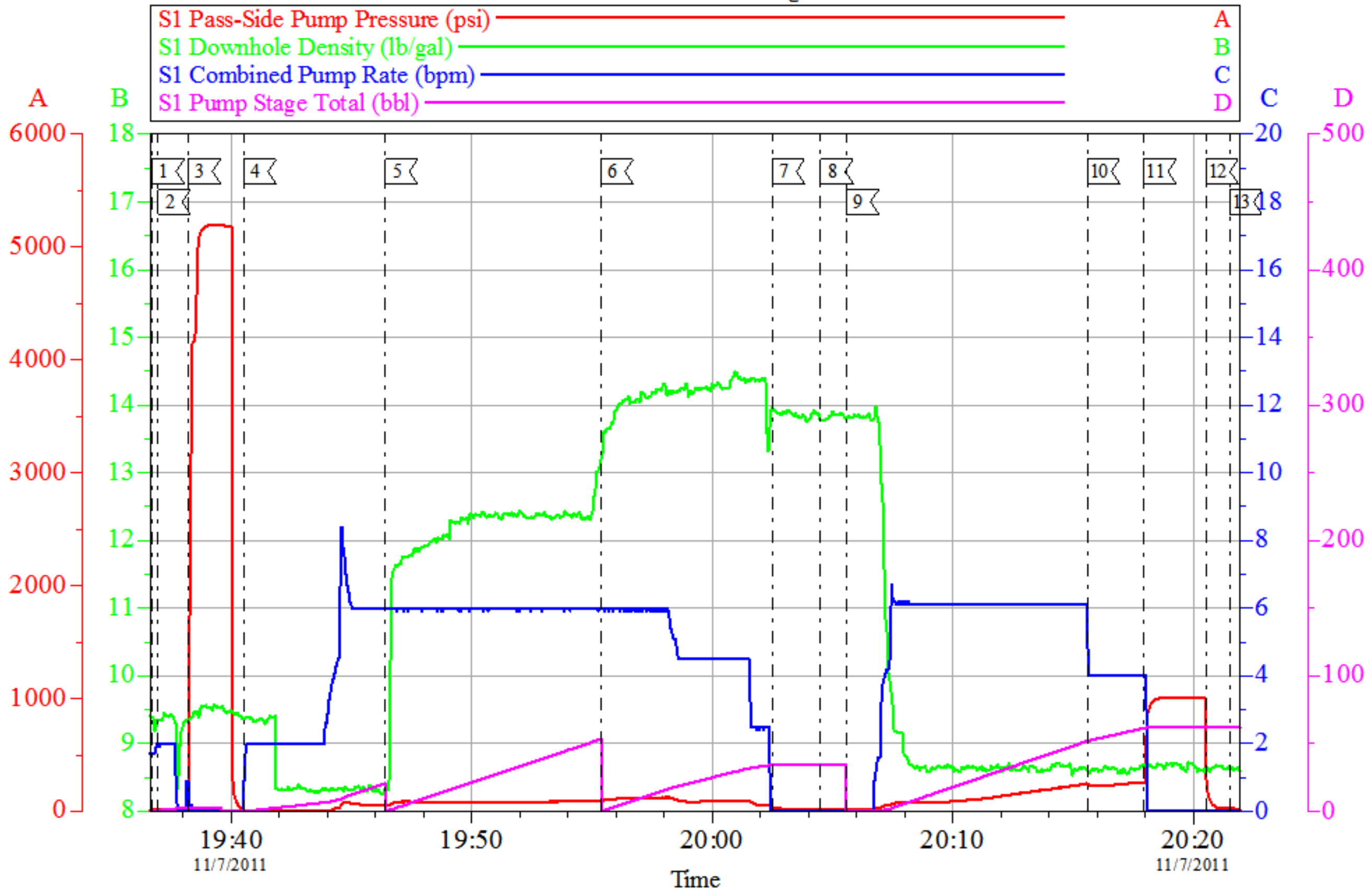
Job Date: 07-Nov-2011  
 Job Type: Cement  
 Cement Supervisor: Bill Jamison

Sales Order #: 9043540  
 ADC Used: yes  
 Elite #X: 5 Troy Vanalstyne

OptiCem v6.4.6  
 10-Jan-12 16:01

# Bill Barrett

## 9.625 Surface Casing



Customer: Bill Barrett  
 Well Description: CBS 31B-21-692  
 Company Rep: Casey Lauer

Job Date: 07-Nov-2011  
 Job Type: Cement  
 Cement Supervisor: Bill Jamison

Sales Order #: 9043540  
 ADC Used: yes  
 Elite #X: 5 Troy Vanalstyne

OptiCem v6.4.6  
 10-Jan-12 16:01

<b>Sales Order #:</b> 9043540	<b>Line Item:</b> 10	<b>Survey Conducted Date:</b> 11/7/2011
<b>Customer:</b> BILL BARRETT CORPORATION E-BILL		<b>Job Type (BOM):</b> CMT SURFACE CASING BOM
<b>Customer Representative:</b> CASEY LAUER		<b>API / UWI: (leave blank if unknown)</b> 05-045-17545
<b>Well Name:</b> CBS		<b>Well Number:</b> 31B-21-691
<b>Well Type:</b> Development Well	<b>Well Country:</b> United States of America	
<b>H2S Present:</b> No	<b>Well State:</b> Colorado	<b>Well County:</b> Garfield

Dear Customer,

We hope that you were satisfied with the service quality of this job performed by Halliburton. It is the aim of our management and service personnel to deliver equipment and service of a standard unmatched in the service sector of the energy industry.

Please take the time to let us know if our performance met with your satisfaction. Please be as critical as possible to ensure we constantly improve our service. Your comments are of great value to us and are intended for the exclusive use of Halliburton.

### CUSTOMER SATISFACTION SURVEY

CATEGORY	CUSTOMER SATISFACTION RESPONSE	
Survey Conducted Date	The date the survey was conducted	11/7/2011
Survey Interviewer	The survey interviewer is the person who initiated the survey.	PRICE JAMISON (HAL9235)
Customer Participation	Did the customer participate in this survey? (Y/N)	Yes
Customer Representative	Enter the Customer representative name	CASEY LAUER
HSE	Was our HSE performance satisfactory? Circle Y or N	Yes
Equipment	Were you satisfied with our Equipment? Circle Y or N	Yes
Personnel	Were you satisfied with our people? Circle Y or N	Yes
Customer Comment	Customer's Comment	NONE

<b>CUSTOMER SIGNATURE</b>
---------------------------



<b>Sales Order #:</b> 9043540	<b>Line Item:</b> 10	<b>Survey Conducted Date:</b> 11/7/2011
<b>Customer:</b> BILL BARRETT CORPORATION E-BILL		<b>Job Type (BOM):</b> CMT SURFACE CASING BOM
<b>Customer Representative:</b> CASEY LAUER		<b>API / UWI: (leave blank if unknown)</b> 05-045-17545
<b>Well Name:</b> CBS		<b>Well Number:</b> 31B-21-691
<b>Well Type:</b> Development Well	<b>Well Country:</b> United States of America	
<b>H2S Present:</b> No	<b>Well State:</b> Colorado	<b>Well County:</b> Garfield

### KEY PERFORMANCE INDICATORS

General	
<b>Survey Conducted Date</b> The date the survey was conducted	11/7/2011

Cementing KPI Survey	
<b>Type of Job</b> Select the type of job. (Cementing or Non-Cementing)	0
<b>Select the Maximum Deviation range for this Job</b> What is the highest deviation for the job you just completed? This may not be the maximum well deviation.	Vertical
<b>Total Operating Time (hours)</b> Total Operating Hours Including Rig-up, Pumping, Rig-down. Enter in decimal format.	3
<b>HSE Incident, Accident, Injury</b> HSE Incident, Accident, Injury. This should be recordable incidents only.	No
<b>Was the job purpose achieved?</b> Was the job delivered correctly as per customer agreed design?	Yes
<b>Operating Hours (Pumping Hours)</b> Total number of hours pumping fluid on this job. Enter in decimal format.	1
<b>Customer Non-Productive Rig Time (hrs)</b> Lost time due to Halliburton in the start, execution, or completion of an ordered service or product, or delays in a follow-on service. Enter in decimal format. 0 if none.	0
<b>Type of Rig Classification Job Was Performed</b> Type Of Rig (classification) Job Was Performed On	Drilling Rig (Portable)
<b>Number Of JSAs Performed</b> Number Of Jsas Performed	5
<b>Number of Unplanned Shutdowns</b> Unplanned shutdown is when injection stops for any period of time.	0
<b>Was this a Primary Cement Job (Yes / No)</b>	Yes

<b>Sales Order #:</b> 9043540	<b>Line Item:</b> 10	<b>Survey Conducted Date:</b> 11/7/2011
<b>Customer:</b> BILL BARRETT CORPORATION E-BILL		<b>Job Type (BOM):</b> CMT SURFACE CASING BOM
<b>Customer Representative:</b> CASEY LAUER		<b>API / UWI: (leave blank if unknown)</b> 05-045-17545
<b>Well Name:</b> CBS		<b>Well Number:</b> 31B-21-691
<b>Well Type:</b> Development Well	<b>Well Country:</b> United States of America	
<b>H2S Present:</b> No	<b>Well State:</b> Colorado	<b>Well County:</b> Garfield

Primary Cement Job= Casing job, Liner job, or Tie-back job.	
<b>Did We Run Wiper Plugs?</b> Did We Run Top And Bottom Casing Wiper Plugs?	Top
<b>Mixing Density of Job Stayed in Designed Density Range (0-100%)</b> Density Range defined as +/- .20 ppg. Calculation: Total BBLs cement mixed at designed density divided by total BBLs of cement multiplied by 100	98
<b>Was Automated Density Control Used?</b> Was Automated Density Control (ADC) Used ?	Yes
<b>Pump Rate (percent) of Job Stayed At Designed Pump Rate</b> Pump Rate range defined as +/- 1bbl/min. Calculation: Total BBLs of fluid pumped at the designed rate divided by Total BBLs of fluid pumped, multiplied by 100	98
<b>Nbr of Remedial Sqz Jobs Rqd - Competition</b> Number Of Remedial Squeeze Jobs Required After Primary Job Performed By Competition	0
<b>Nbr of Remedial Plug Jobs Rqd - HES</b> Number Of Remedial Plug Jobs Needed After Primary Plug Pumped By HES	0
<b>Nbr of Remedial Sqz Jobs Rqd - HES</b> Number Of Remedial Squeeze Jobs Required After Primary Job Performed By HES	0