

Well Name: **Strear 25-10**

Surface Location: Strear 18-10-9F Pad Sec.10-T2N-R67W  
North American Datum 1983 US State Plane 1983 Colorado Northern Zone

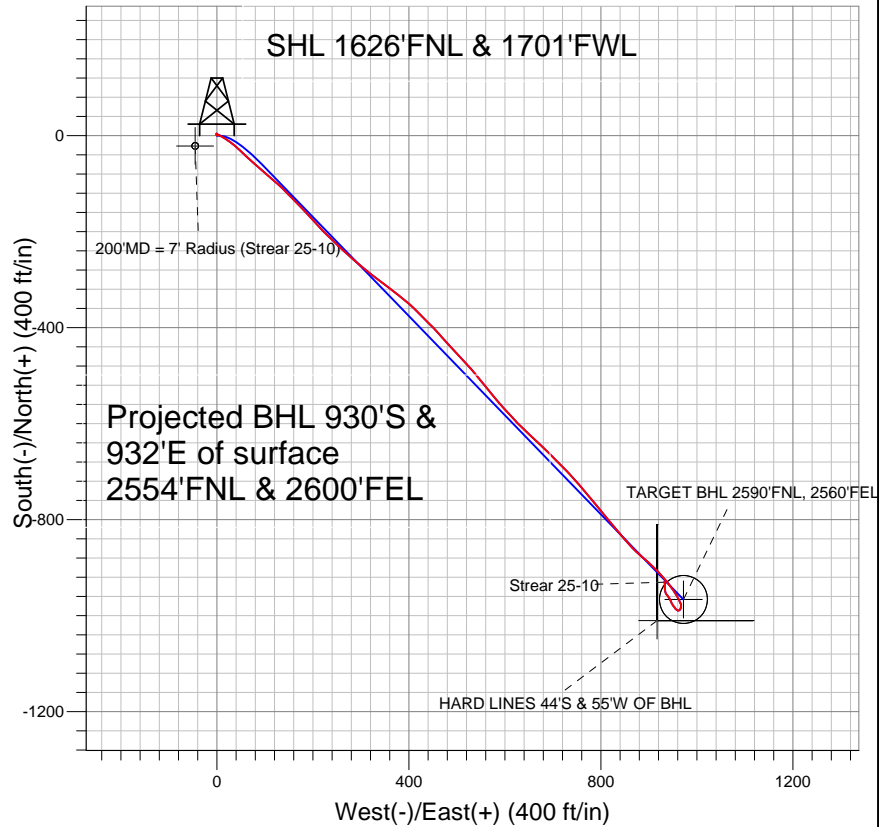
Ground Elevation: 4942.0

+N/-S	+E/-W	Northing	Easting	Latitude	Longitude
0.0	0.0	1300072.25	3173351.89	40.155429	-104.879807

Original Well Elev WELL @ 4957.0ft (Original Well Elev)

Slot

## Anadarko, Weld County CO



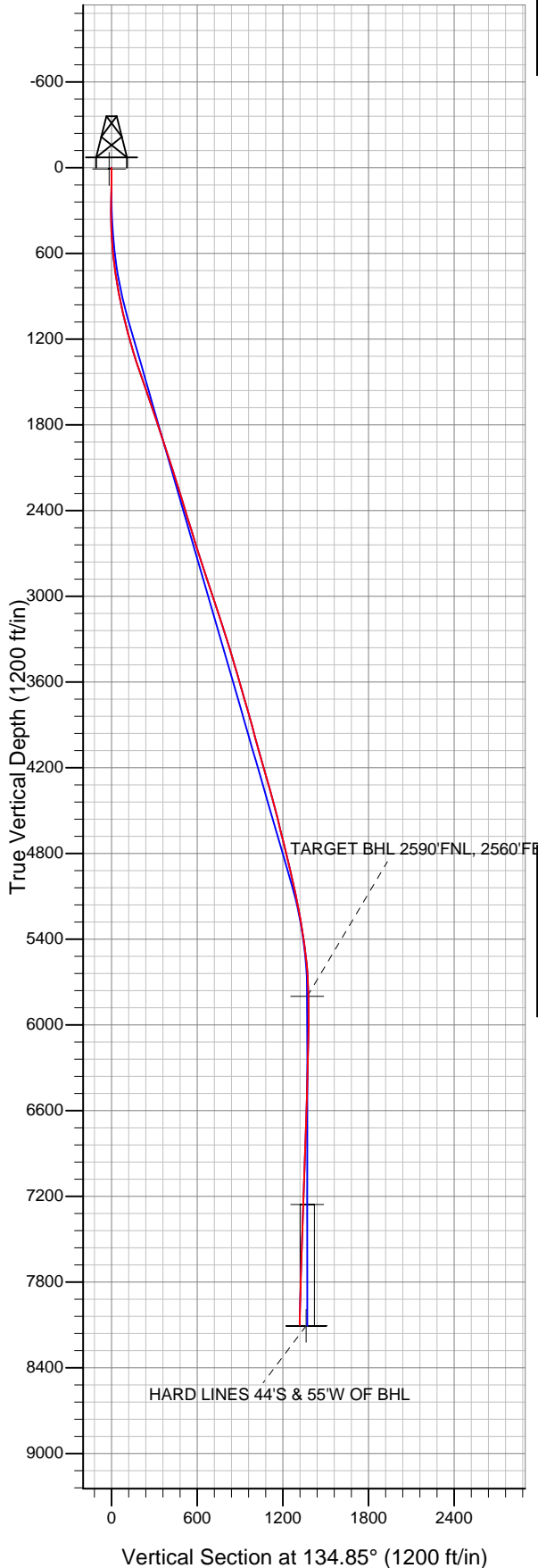
### LEGEND

- Strear 25-10, Wellbore #1, Plan #1 (8-23-11) V0
- Wellbore #1
- Survey #1

## Final Survey Plot

Projected Final Survey -  
8295'MD & 8101'TVD @ 1317'VS  
2.0 deg Inc 337.1 deg AZ

Project: SEC.10-T2N-R67W  
Site: Strear 18-10-9F Pad Sec.10-T2N-R67W  
Well: Strear 25-10  
Plan: Wellbore #1





## **Directional**

### **Anadarko, Weld County CO**

**SEC.10-T2N-R67W**

**Strear 18-10-9F Pad Sec.10-T2N-R67W**

**Strear 25-10**

**Wellbore #1**

**Survey: Survey #1**

### **Standard Survey Report**

**06 October, 2011**

<b>Company:</b>	Anadarko, Weld County CO	<b>Local Co-ordinate Reference:</b>	Well Strear 25-10
<b>Project:</b>	SEC.10-T2N-R67W	<b>TVD Reference:</b>	WELL @ 4957.0ft (Original Well Elev)
<b>Site:</b>	Strear 18-10-9F Pad Sec.10-T2N-R67W	<b>MD Reference:</b>	WELL @ 4957.0ft (Original Well Elev)
<b>Well:</b>	Strear 25-10	<b>North Reference:</b>	True
<b>Wellbore:</b>	Wellbore #1	<b>Survey Calculation Method:</b>	Minimum Curvature
<b>Design:</b>	Wellbore #1	<b>Database:</b>	Landmark

<b>Project</b>	SEC.10-T2N-R67W, Weld County, Colorado		
<b>Map System:</b>	US State Plane 1983	<b>System Datum:</b>	Mean Sea Level
<b>Geo Datum:</b>	North American Datum 1983		Using Well Reference Point
<b>Map Zone:</b>	Colorado Northern Zone		Using geodetic scale factor

Site	Strear 18-10-9F Pad Sec.10-T2N-R67W				
Site Position:		Northing:	1,300,092.30ft	Latitude:	40.155484
From:	Lat/Long	Easting:	3,173,351.75ft	Longitude:	-104.879807
Position Uncertainty:	0.0 ft	Slot Radius:	"	Grid Convergence:	0.40 °

Well	Strear 25-10					
Well Position	+N/-S	0.0 ft	Northing:	1,300,072.25 ft	Latitude:	40.155429
	+E/-W	0.0 ft	Easting:	3,173,351.89 ft	Longitude:	-104.879807
Position Uncertainty		0.0 ft	Wellhead Elevation:	ft	Ground Level:	4,942.0 ft

<b>Wellbore</b>	Wellbore #1				
<b>Magnetics</b>	<b>Model Name</b>	<b>Sample Date</b>	<b>Declination (°)</b>	<b>Dip Angle (°)</b>	<b>Field Strength (nT)</b>
	IGRF2010	8/30/2011	8.88	66.83	52,967

<b>Design</b>	Wellbore #1				
<b>Audit Notes:</b>					
<b>Version:</b>	1.0	<b>Phase:</b>	ACTUAL	<b>Tie On Depth:</b>	0.0
<b>Vertical Section:</b>	<b>Depth From (TVD) (ft)</b>	<b>+N/-S (ft)</b>	<b>+E/-W (ft)</b>	<b>Direction (°)</b>	
	0.0	0.0	0.0	134.85	

<b>Survey Program</b>	<b>Date</b>	10/6/2011			
<b>From (ft)</b>	<b>To (ft)</b>	<b>Survey (Wellbore)</b>	<b>Tool Name</b>	<b>Description</b>	
148.0	8,295.0	Survey #1 (Wellbore #1)	MWD	MWD - Standard	

<b>Survey</b>										
<b>Measured Depth (ft)</b>	<b>Inclination (°)</b>	<b>Azimuth (°)</b>	<b>Vertical Depth (ft)</b>	<b>+N/-S (ft)</b>	<b>+E/-W (ft)</b>	<b>Vertical Section (ft)</b>	<b>Dogleg Rate (°/100ft)</b>	<b>Build Rate (°/100ft)</b>	<b>Turn Rate (°/100ft)</b>	
0.0	0.00	0.00	0.0	0.0	0.0	0.0	0.00	0.00	0.00	
9.1	0.09	322.80	9.1	0.0	0.0	0.0	1.01	1.01	0.00	
<b>200'MD = 7' Radius (Strear 25-10)</b>										
148.0	1.50	322.80	148.0	1.5	-1.2	-1.9	1.01	1.01	0.00	
236.0	1.40	9.20	236.0	3.5	-1.7	-3.7	1.30	-0.11	52.73	
328.0	0.60	118.40	327.9	4.4	-1.1	-3.9	1.84	-0.87	118.70	
420.0	1.90	130.30	419.9	3.2	0.5	-1.9	1.43	1.41	12.93	
512.0	3.70	115.80	511.8	0.9	4.3	2.4	2.09	1.96	-15.76	
604.0	6.10	122.10	603.5	-3.0	11.1	10.0	2.67	2.61	6.85	
631.0	6.80	123.10	630.3	-4.6	13.7	13.0	2.63	2.59	3.70	
722.0	7.80	121.80	720.6	-10.8	23.5	24.3	1.11	1.10	-1.43	
814.0	9.80	130.30	811.5	-19.2	34.7	38.1	2.59	2.17	9.24	
909.0	11.60	133.70	904.8	-31.0	47.8	55.8	2.01	1.89	3.58	

<b>Company:</b>	Anadarko, Weld County CO	<b>Local Co-ordinate Reference:</b>	Well Strear 25-10
<b>Project:</b>	SEC.10-T2N-R67W	<b>TVD Reference:</b>	WELL @ 4957.0ft (Original Well Elev)
<b>Site:</b>	Strear 18-10-9F Pad Sec.10-T2N-R67W	<b>MD Reference:</b>	WELL @ 4957.0ft (Original Well Elev)
<b>Well:</b>	Strear 25-10	<b>North Reference:</b>	True
<b>Wellbore:</b>	Wellbore #1	<b>Survey Calculation Method:</b>	Minimum Curvature
<b>Design:</b>	Wellbore #1	<b>Database:</b>	Landmark

Survey										
Measured Depth (ft)	Inclination (°)	Azimuth (°)	Vertical Depth (ft)	+N/-S (ft)	+E/-W (ft)	Vertical Section (ft)	Dogleg Rate (°/100ft)	Build Rate (°/100ft)	Turn Rate (°/100ft)	
1,004.0	12.80	133.70	997.7	-44.9	62.3	75.8	1.26	1.26	0.00	
1,099.0	13.50	130.90	1,090.2	-59.4	78.3	97.4	1.00	0.74	-2.95	
1,194.0	15.10	130.20	1,182.2	-74.6	96.2	120.8	1.69	1.68	-0.74	
1,289.0	16.60	130.70	1,273.6	-91.5	115.9	146.7	1.59	1.58	0.53	
1,384.0	18.30	134.20	1,364.2	-110.7	136.9	175.1	2.10	1.79	3.68	
1,480.0	19.30	136.20	1,455.1	-132.7	158.7	206.1	1.24	1.04	2.08	
1,575.0	19.20	136.00	1,544.8	-155.3	180.4	237.4	0.13	-0.11	-0.21	
1,670.0	18.40	137.20	1,634.7	-177.5	201.4	268.0	0.94	-0.84	1.26	
1,765.0	18.60	136.50	1,724.8	-199.5	222.0	298.1	0.31	0.21	-0.74	
1,860.0	19.30	133.90	1,814.7	-221.4	243.8	328.9	1.15	0.74	-2.74	
1,956.0	18.30	132.60	1,905.6	-242.6	266.3	359.9	1.13	-1.04	-1.35	
2,051.0	18.30	130.30	1,995.8	-262.3	288.7	389.6	0.76	0.00	-2.42	
2,146.0	17.60	129.80	2,086.1	-281.2	311.1	418.8	0.75	-0.74	-0.53	
2,241.0	17.00	126.10	2,176.8	-298.5	333.3	446.8	1.32	-0.63	-3.89	
2,338.0	17.40	127.50	2,269.5	-315.7	356.3	475.2	0.59	0.41	1.44	
2,433.0	17.50	128.10	2,360.1	-333.2	378.8	503.5	0.22	0.11	0.63	
2,529.0	17.10	131.40	2,451.8	-351.4	400.7	531.9	1.10	-0.42	3.44	
2,624.0	16.80	135.60	2,542.7	-370.5	420.8	559.6	1.33	-0.32	4.42	
2,719.0	17.40	135.10	2,633.5	-390.3	440.5	587.5	0.65	0.63	-0.53	
2,814.0	18.20	137.70	2,723.9	-411.4	460.5	616.6	1.19	0.84	2.74	
2,910.0	18.20	137.60	2,815.1	-433.5	480.7	646.5	0.03	0.00	-0.10	
3,005.0	18.80	137.40	2,905.2	-455.7	501.0	676.6	0.64	0.63	-0.21	
3,100.0	18.60	137.20	2,995.2	-478.1	521.7	707.1	0.22	-0.21	-0.21	
3,195.0	17.50	140.50	3,085.5	-500.3	541.1	736.4	1.58	-1.16	3.47	
3,290.0	17.90	141.20	3,176.0	-522.7	559.3	765.1	0.48	0.42	0.74	
3,386.0	18.60	140.50	3,267.2	-546.0	578.3	795.0	0.76	0.73	-0.73	
3,481.0	17.30	137.40	3,357.6	-568.1	597.5	824.2	1.70	-1.37	-3.26	
3,576.0	16.80	137.60	3,448.4	-588.6	616.3	852.1	0.53	-0.53	0.21	
3,671.0	15.80	133.90	3,539.6	-607.7	634.9	878.7	1.52	-1.05	-3.89	
3,766.0	16.00	132.50	3,630.9	-625.5	653.9	904.7	0.46	0.21	-1.47	
3,861.0	16.40	133.90	3,722.2	-643.7	673.2	931.2	0.59	0.42	1.47	
3,956.0	16.10	135.30	3,813.4	-662.3	692.1	957.8	0.52	-0.32	1.47	
4,051.0	15.70	136.00	3,904.7	-680.9	710.3	983.8	0.47	-0.42	0.74	
4,147.0	14.90	134.40	3,997.3	-698.9	728.1	1,009.1	0.94	-0.83	-1.67	
4,242.0	15.10	138.80	4,089.1	-716.8	745.0	1,033.7	1.22	0.21	4.63	
4,337.0	15.60	140.40	4,180.7	-735.9	761.3	1,058.8	0.69	0.53	1.68	
4,432.0	16.80	138.80	4,271.9	-756.1	778.5	1,085.2	1.35	1.26	-1.68	
4,527.0	16.00	140.40	4,363.1	-776.5	795.9	1,111.9	0.97	-0.84	1.68	
4,622.0	14.60	140.90	4,454.7	-795.9	811.8	1,136.8	1.48	-1.47	0.53	
4,717.0	13.80	142.10	4,546.8	-814.1	826.3	1,160.0	0.90	-0.84	1.26	
4,813.0	14.50	138.40	4,639.9	-832.2	841.3	1,183.3	1.19	0.73	-3.85	
4,908.0	13.90	139.00	4,732.0	-849.7	856.7	1,206.6	0.65	-0.63	0.63	
5,003.0	13.40	133.90	4,824.3	-865.9	872.1	1,229.0	1.37	-0.53	-5.37	
5,098.0	13.00	130.00	4,916.8	-880.4	888.2	1,250.6	1.03	-0.42	-4.11	
5,193.0	12.60	132.10	5,009.4	-894.2	904.1	1,271.6	0.65	-0.42	2.21	
5,288.0	12.10	137.00	5,102.2	-908.5	918.6	1,291.9	1.22	-0.53	5.16	
5,383.0	10.70	139.50	5,195.4	-922.4	931.1	1,310.7	1.56	-1.47	2.63	
5,478.0	9.50	143.00	5,288.9	-935.4	941.5	1,327.2	1.42	-1.26	3.68	
5,573.0	8.80	144.00	5,382.7	-947.6	950.5	1,342.1	0.76	-0.74	1.05	
5,668.0	7.60	150.70	5,476.7	-958.9	957.9	1,355.4	1.61	-1.26	7.05	
5,764.0	5.80	155.30	5,572.1	-968.9	963.0	1,366.0	1.96	-1.88	4.79	
5,859.0	4.00	161.00	5,666.7	-976.4	966.1	1,373.5	1.96	-1.89	6.00	
5,954.0	3.00	192.90	5,761.5	-981.9	966.6	1,377.8	2.26	-1.05	33.58	
5,991.6	2.90	198.32	5,799.1	-983.8	966.1	1,378.7	0.79	-0.27	14.41	

<b>Company:</b>	Anadarko, Weld County CO	<b>Local Co-ordinate Reference:</b>	Well Strear 25-10
<b>Project:</b>	SEC.10-T2N-R67W	<b>TVD Reference:</b>	WELL @ 4957.0ft (Original Well Elev)
<b>Site:</b>	Strear 18-10-9F Pad Sec.10-T2N-R67W	<b>MD Reference:</b>	WELL @ 4957.0ft (Original Well Elev)
<b>Well:</b>	Strear 25-10	<b>North Reference:</b>	True
<b>Wellbore:</b>	Wellbore #1	<b>Survey Calculation Method:</b>	Minimum Curvature
<b>Design:</b>	Wellbore #1	<b>Database:</b>	Landmark

Survey									
Measured Depth (ft)	Inclination (°)	Azimuth (°)	Vertical Depth (ft)	+N/-S (ft)	+E/-W (ft)	Vertical Section (ft)	Dogleg Rate (°/100ft)	Build Rate (°/100ft)	Turn Rate (°/100ft)
<b>TARGET BHL 2590'FNL, 2560'FEL</b>									
6,049.0	2.80	207.20	5,856.4	-986.4	965.0	1,379.8	0.79	-0.17	15.47
6,144.0	1.30	229.10	5,951.4	-989.2	963.1	1,380.4	1.75	-1.58	23.05
6,239.0	1.10	273.60	6,046.3	-989.8	961.4	1,379.7	0.98	-0.21	46.84
6,335.0	1.70	295.80	6,142.3	-989.1	959.2	1,377.6	0.83	0.63	23.13
6,430.0	1.60	319.00	6,237.3	-987.5	957.1	1,375.0	0.71	-0.11	24.42
6,525.0	1.40	319.70	6,332.2	-985.6	955.4	1,372.5	0.21	-0.21	0.74
6,620.0	1.50	318.40	6,427.2	-983.8	953.9	1,370.1	0.11	0.11	-1.37
6,715.0	1.70	319.80	6,522.2	-981.8	952.1	1,367.4	0.21	0.21	1.47
6,810.0	1.80	324.60	6,617.1	-979.5	950.4	1,364.6	0.19	0.11	5.05
6,906.0	2.00	328.50	6,713.1	-976.9	948.6	1,361.5	0.25	0.21	4.06
7,001.0	2.00	336.70	6,808.0	-973.9	947.1	1,358.3	0.30	0.00	8.63
7,096.0	2.10	337.40	6,903.0	-970.8	945.8	1,355.2	0.11	0.11	0.74
7,191.0	2.10	334.40	6,997.9	-967.6	944.3	1,351.9	0.12	0.00	-3.16
7,286.0	2.10	328.80	7,092.8	-964.6	942.7	1,348.6	0.22	0.00	-5.89
7,381.0	2.20	324.90	7,187.8	-961.6	940.7	1,345.1	0.19	0.11	-4.11
7,449.4	1.98	321.83	7,256.1	-959.6	939.2	1,342.6	0.35	-0.31	-4.48
<b>TARGET CIRCLE 2590'FNL &amp; 2560'FEL</b>									
7,477.0	1.90	320.40	7,283.7	-958.9	938.7	1,341.7	0.35	-0.31	-5.19
7,572.0	2.30	320.40	7,378.6	-956.2	936.4	1,338.2	0.42	0.42	0.00
7,667.0	2.00	341.30	7,473.6	-953.1	934.7	1,334.9	0.88	-0.32	22.00
7,762.0	2.30	345.90	7,568.5	-949.7	933.7	1,331.7	0.36	0.32	4.84
7,857.0	2.30	353.60	7,663.4	-946.0	933.0	1,328.6	0.33	0.00	8.11
7,952.0	2.00	359.90	7,758.4	-942.4	932.8	1,326.0	0.40	-0.32	6.63
8,048.0	2.20	1.80	7,854.3	-938.9	932.9	1,323.5	0.22	0.21	1.98
8,143.0	2.00	2.90	7,949.2	-935.4	933.0	1,321.2	0.21	-0.21	1.16
8,270.0	2.00	337.10	8,076.2	-931.2	932.3	1,317.6	0.70	0.00	-20.32
8,295.0	2.00	337.10	8,101.1	-930.4	931.9	1,316.8	0.00	0.00	0.00
<b>HARD LINES 44'S &amp; 55'W OF BHL</b>									

Checked By: _____	Approved By: _____	Date: _____
-------------------	--------------------	-------------