

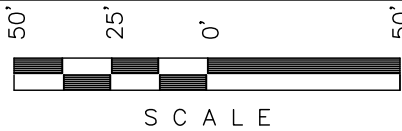
Encana OIL & GAS (USA) INC.

ADDENDUM TO LEGAL PLAT FOR

WELL PAD H34 6102

SECTION 34, T6S, R102W, 6th P.M.

SE 1/4 NE 1/4

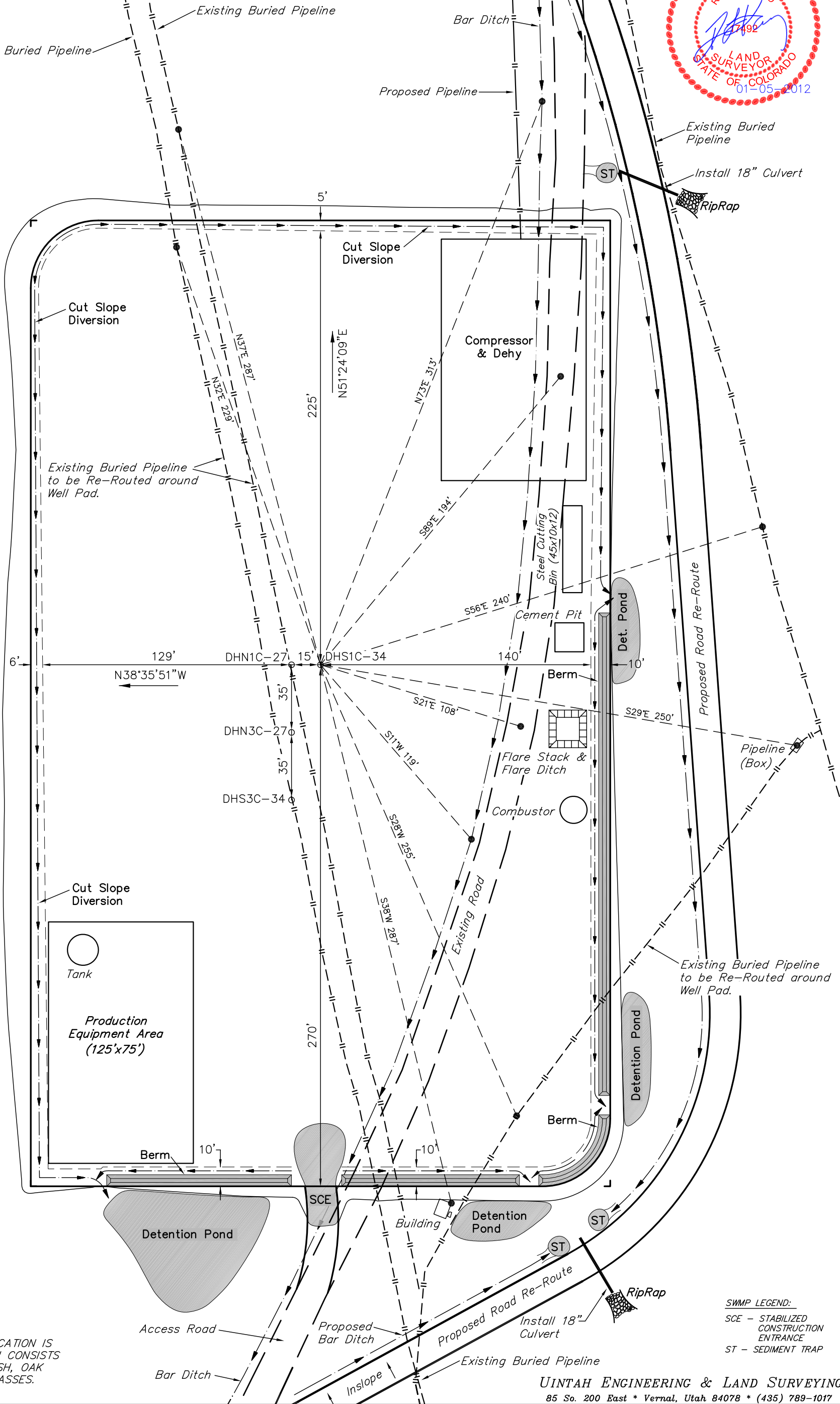


Sheet 1g of 11



SCALE: 1" = 50'
DATE: 12-07-11
DRAWN BY: D.R.B.
Revised: 01-05-12 D.R.B.

NOTE:
Flare Pit is to
be located a min.
of 100' from the
Well Head.



SURFACE USE OF LOCATION IS
GRAZING, VEGETATION CONSISTS
MAINLY OF SAGEBRUSH, OAK
BRUSH & NATIVE GRASSES.

SWAMP LEGEND:
SCE - STABILIZED
CONSTRUCTION
ENTRANCE
ST - SEDIMENT TRAP

UINTAH ENGINEERING & LAND SURVEYING
85 So. 200 East * Vernal, Utah 84078 * (435) 789-1017

Encana OIL & GAS (USA) INC.

WELL PAD INTERFERENCE PLAT
WELL PAD H34 6102
SECTION 34, T6S, R102W, 6th P.M.
SE 1/4 NE 1/4

50' 25' 0' 50'

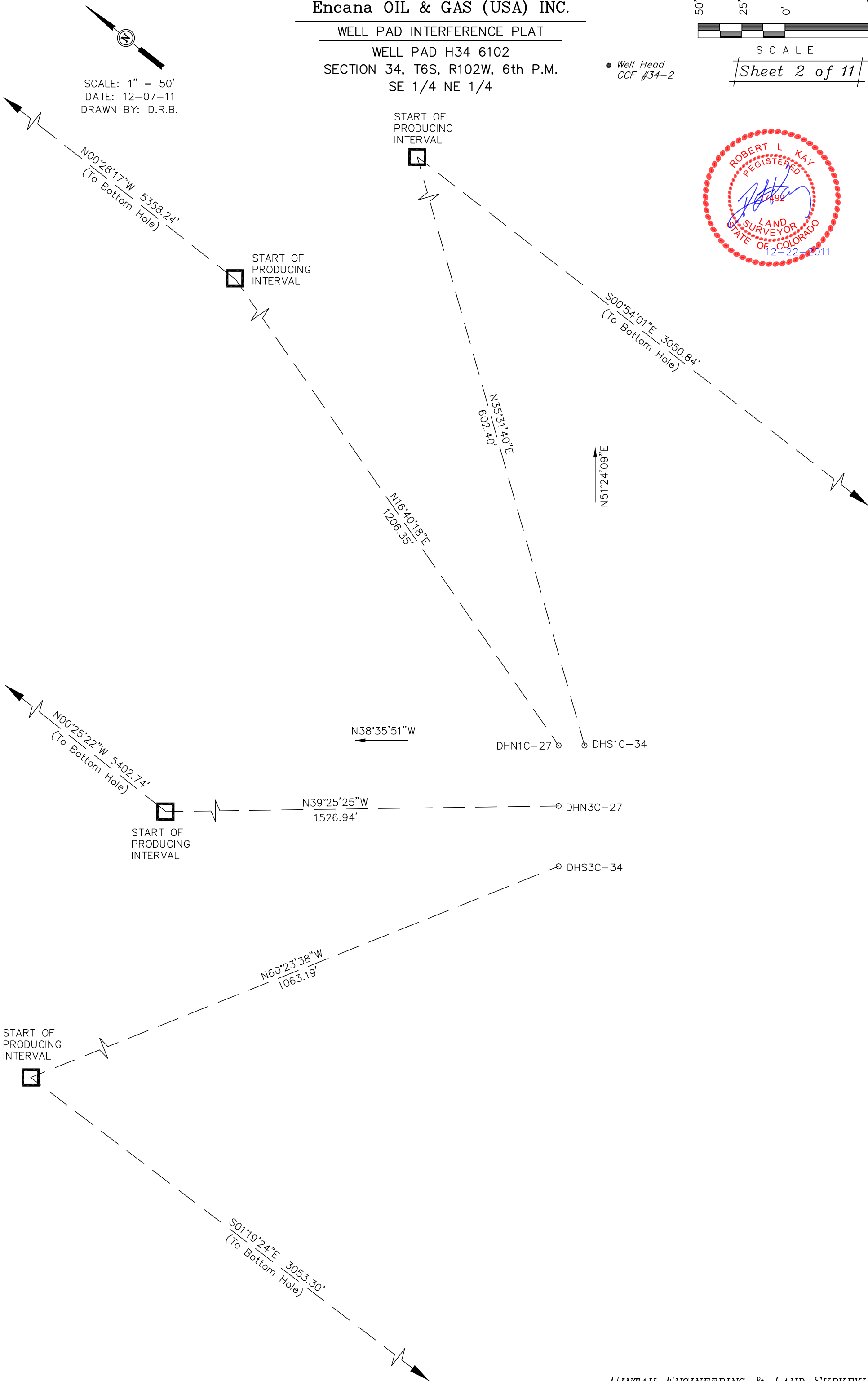


S C A L E

Sheet 2 of 11

Well Head
CCF #34-2

SCALE: 1" = 50'
DATE: 12-07-11
DRAWN BY: D.R.B.



Encana OIL & GAS (USA) INC.

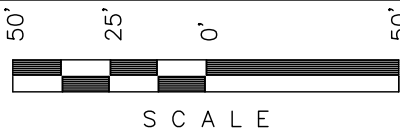
CONSTRUCTION LAYOUT FOR

WELL PAD H34 6102

SECTION 34, T6S, R102W, 6th P.M.

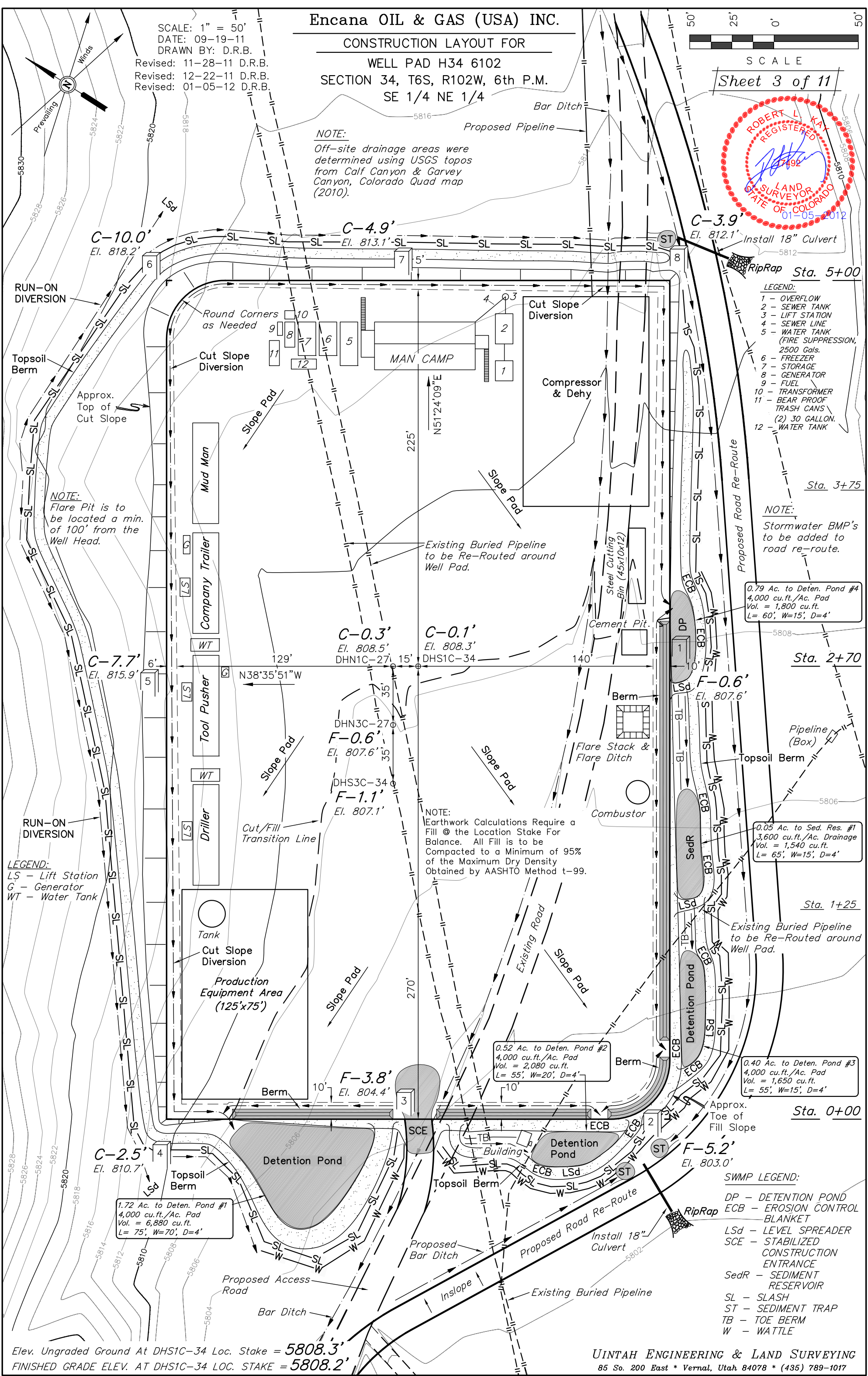
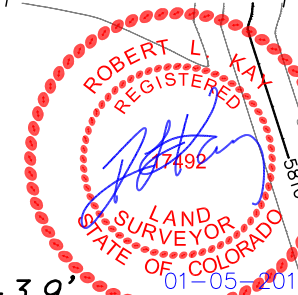
SE 1/4 NE 1/4

SCALE: 1" = 50'
DATE: 09-19-11
DRAWN BY: D.R.B.
Revised: 11-28-11 D.R.B.
Revised: 12-22-11 D.R.B.
Revised: 01-05-12 D.R.B.



Sheet 3 of 11

NOTE:
Off-site drainage areas were determined using USGS topos from Calf Canyon & Garvey Canyon, Colorado Quad map (2010).



- LEGEND:**
- 1 - OVERFLOW
 - 2 - SEWER TANK
 - 3 - LIFT STATION
 - 4 - SEWER LINE
 - 5 - WATER TANK (FIRE SUPPRESSION, 2500 Gals.)
 - 6 - FREEZER
 - 7 - STORAGE
 - 8 - GENERATOR
 - 9 - FUEL
 - 10 - TRANSFORMER
 - 11 - BEAR PROOF TRASH CANS (2) 30 GALLON
 - 12 - WATER TANK

NOTE:
Stormwater BMP's to be added to road re-route.

0.79 Ac. to Deten. Pond #4
4,000 cu.ft./Ac. Pad
Vol. = 1,800 cu.ft.
L= 60', W=15', D=4'

0.05 Ac. to Sed. Res. #1
3,600 cu.ft./Ac. Drainage
Vol. = 1,540 cu.ft.
L= 65', W=15', D=4'

0.40 Ac. to Deten. Pond #3
4,000 cu.ft./Ac. Pad
Vol. = 1,650 cu.ft.
L= 55', W=15', D=4'

0.52 Ac. to Deten. Pond #2
4,000 cu.ft./Ac. Pad
Vol. = 2,080 cu.ft.
L= 55', W=20', D=4'

1.72 Ac. to Deten. Pond #1
4,000 cu.ft./Ac. Pad
Vol. = 6,880 cu.ft.
L= 75', W=70', D=4'

NOTE:
Earthwork Calculations Require a Fill @ the Location Stake For Balance. All Fill is to be Compacted to a Minimum of 95% of the Maximum Dry Density Obtained by AASHTO Method t-99.

LEGEND:
LS - Lift Station
G - Generator
WT - Water Tank

SWMP LEGEND:
DP - DETENTION POND
ECB - EROSION CONTROL BLANKET
LSd - LEVEL SPREADER
SCE - STABILIZED CONSTRUCTION ENTRANCE
SedR - SEDIMENT RESERVOIR
SL - SLASH
ST - SEDIMENT TRAP
TB - TOE BERM
W - WATTLE

Elev. Ungraded Ground At DHS1C-34 Loc. Stake = 5808.3'
FINISHED GRADE ELEV. AT DHS1C-34 LOC. STAKE = 5808.2'

UINTAH ENGINEERING & LAND SURVEYING
85 So. 200 East * Vernal, Utah 84078 * (435) 789-1017

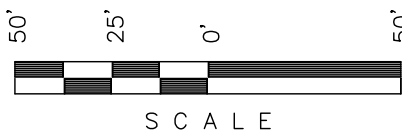
Encana OIL & GAS (USA) INC.

PRE-CONSTRUCTION LAYOUT FOR

WELL PAD H34 6102

SECTION 34, T6S, R102W, 6th P.M.

SE 1/4 NE 1/4



SCALE

Sheet 3a of 11

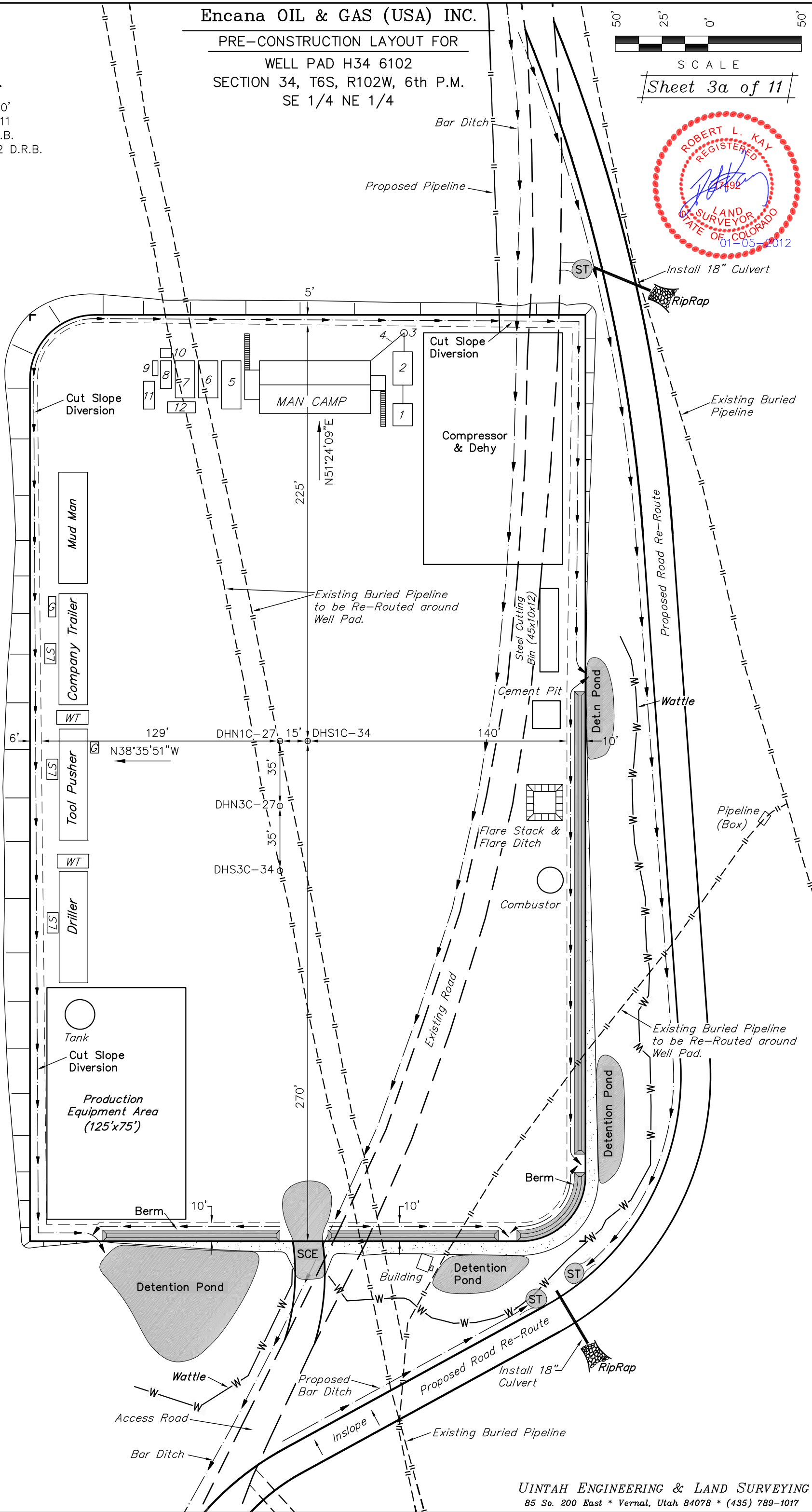


SCALE: 1" = 50'

DATE: 12-07-11

DRAWN BY: D.R.B.

Revised: 01-05-12 D.R.B.

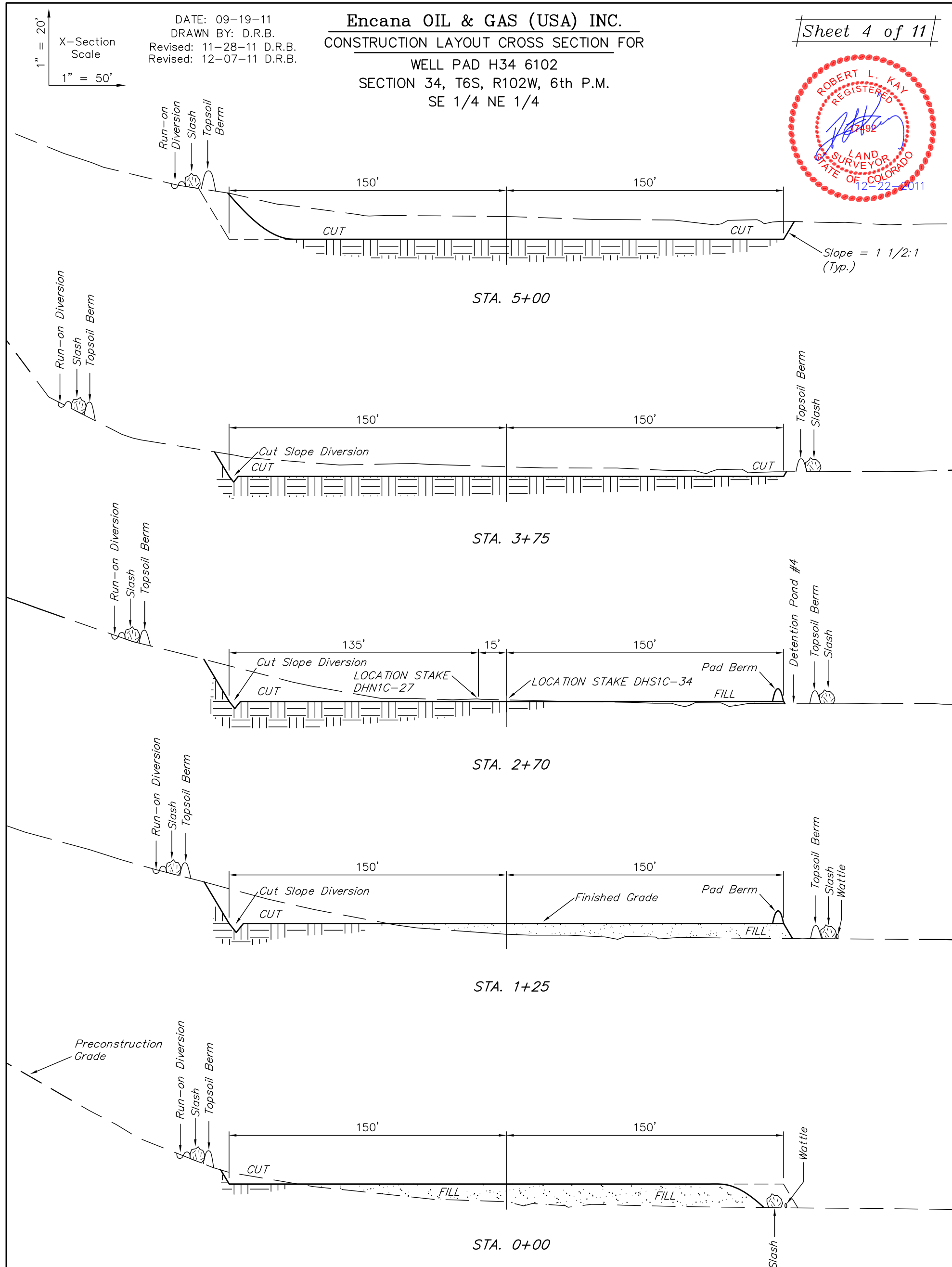


SWMP LEGEND:

SCE - STABILIZED
CONSTRUCTION
ENTRANCE
W - WATTLE
ST - SEDIMENT TRAP

Sheet 4 of 11

WELL PAD H34 6102
N 34, T6S, R102W, 6th P.M.
SE 1/4 NE 1/4



* NOTE:
FILL QUANTITY INCLUDES
5% FOR COMPACTION

(10") Topsoil Stripping	=	4,990 Cu. Yds.
Remaining Location	=	7,570 Cu. Yds.
TOTAL CUT	=	12,560 CU.YDS.
FILL	=	7,570 CU.YDS.

EXCESS MATERIAL	=	4,990 Cu. Yds.
Topsoil	=	4,990 Cu. Yds.
EXCESS UNBALANCE (After Interim Rehabilitation)	=	0 Cu. Yds.

UINTAH ENGINEERING & LAND SURVEYING
85 So. 200 East * Vernal, Utah 84078 * (435) 789-1017

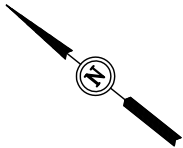
Encana OIL & GAS (USA) INC.

TYPICAL RIG LAYOUT FOR

WELL PAD H34 6102

SECTION 34, T6S, R102W, 6th P.M.

SE 1/4 NE 1/4



SCALE: 1" = 50'

DATE: 12-07-11

DRAWN BY: D.R.B.

Revised: 01-05-12 D.R.B.



SCALE

Sheet 5 of 11



Proposed Pipeline

Proposed Bar Ditch

Install 18" Culvert

RipRap

Proposed Road Re-Route

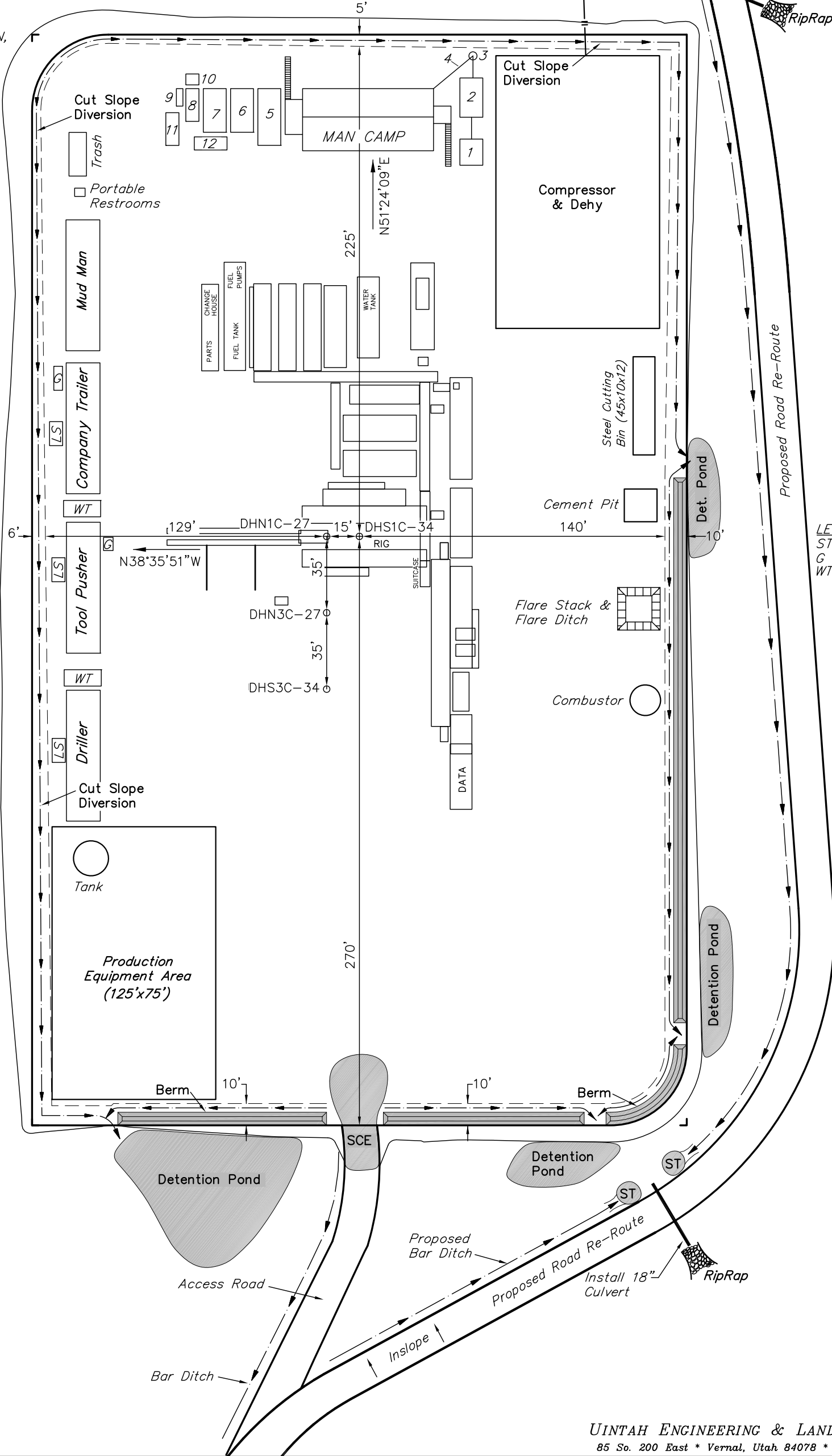
LEGEND:
ST - Septic Tank
G - Generator
WT - Water Tank

LEGEND:

- 1 - OVERFLOW
- 2 - SEWER TANK
- 3 - LIFT STATION
- 4 - SEWER LINE
- 5 - WATER TANK (FIRE SUPPRESSION, 2500 Gals.)
- 6 - FREEZER
- 7 - STORAGE
- 8 - GENERATOR
- 9 - FUEL
- 10 - TRANSFORMER
- 11 - BEAR PROOF TRASH CANS (2) 30 GALLON.
- 12 - WATER TANK

NOTE:

Flare Pit is to be located a min. of 100' from the Well Head.



SWMP LEGEND:

- SCE - STABILIZED CONSTRUCTION ENTRANCE
- W - WATTLE
- ST - SEDIMENT TRAP

Encana OIL & GAS (USA) INC.

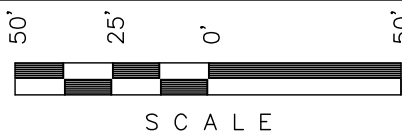
PRODUCTION SCHEMATIC FOR

WELL PAD H34 6102

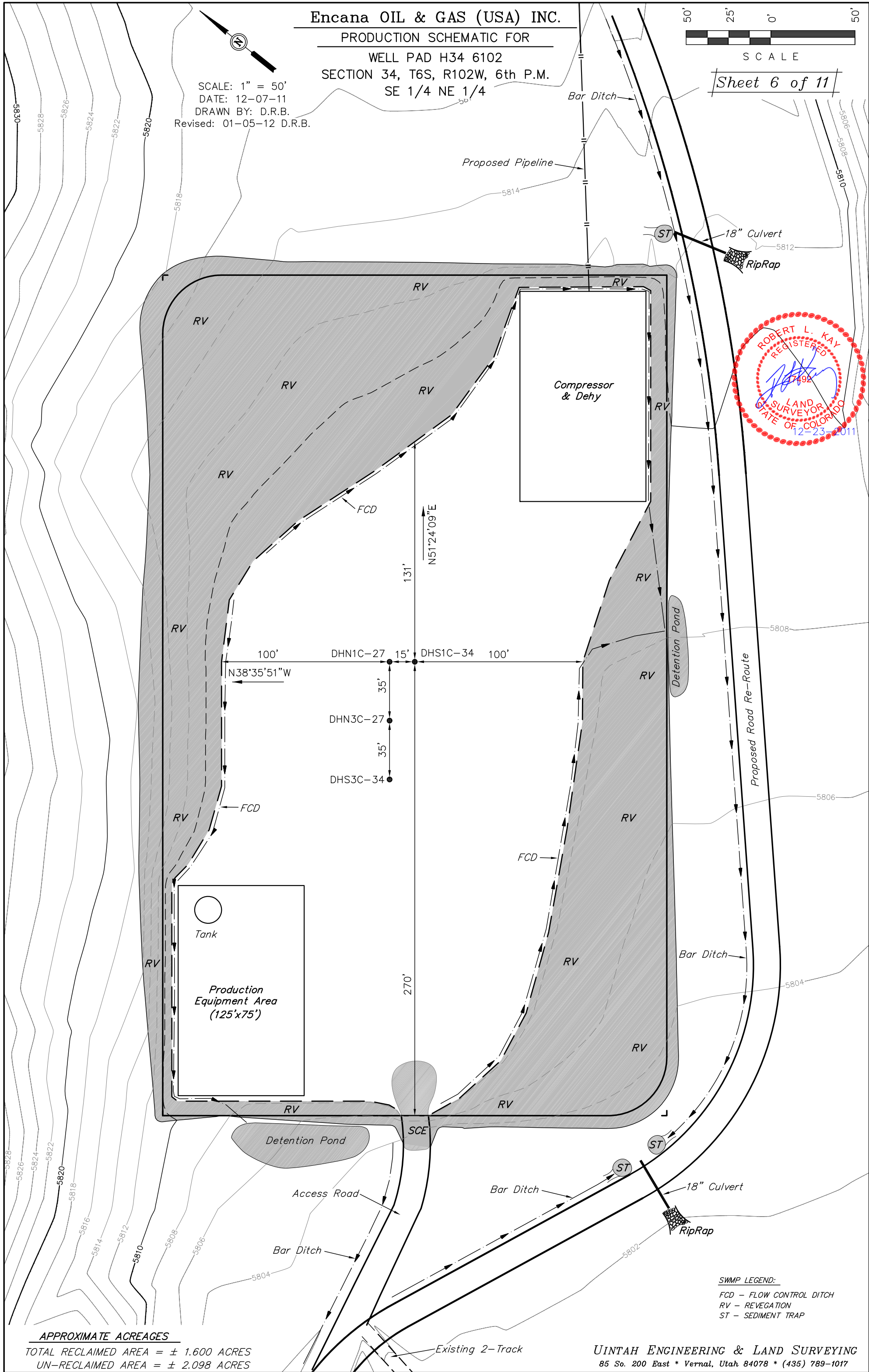
SECTION 34, T6S, R102W, 6th P.M.

SE 1/4 NE 1/4

SCALE: 1" = 50'
DATE: 12-07-11
DRAWN BY: D.R.B.
Revised: 01-05-12 D.R.B.



Sheet 6 of 11



APPROXIMATE ACREAGES
TOTAL RECLAIMED AREA = ± 1.600 ACRES
UN-RECLAIMED AREA = ± 2.098 ACRES

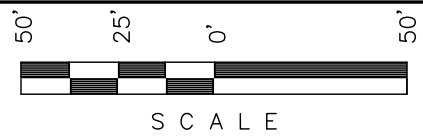
UINTAH ENGINEERING & LAND SURVEYING
85 So. 200 East * Vernal, Utah 84078 * (435) 789-1017

LEGEND:

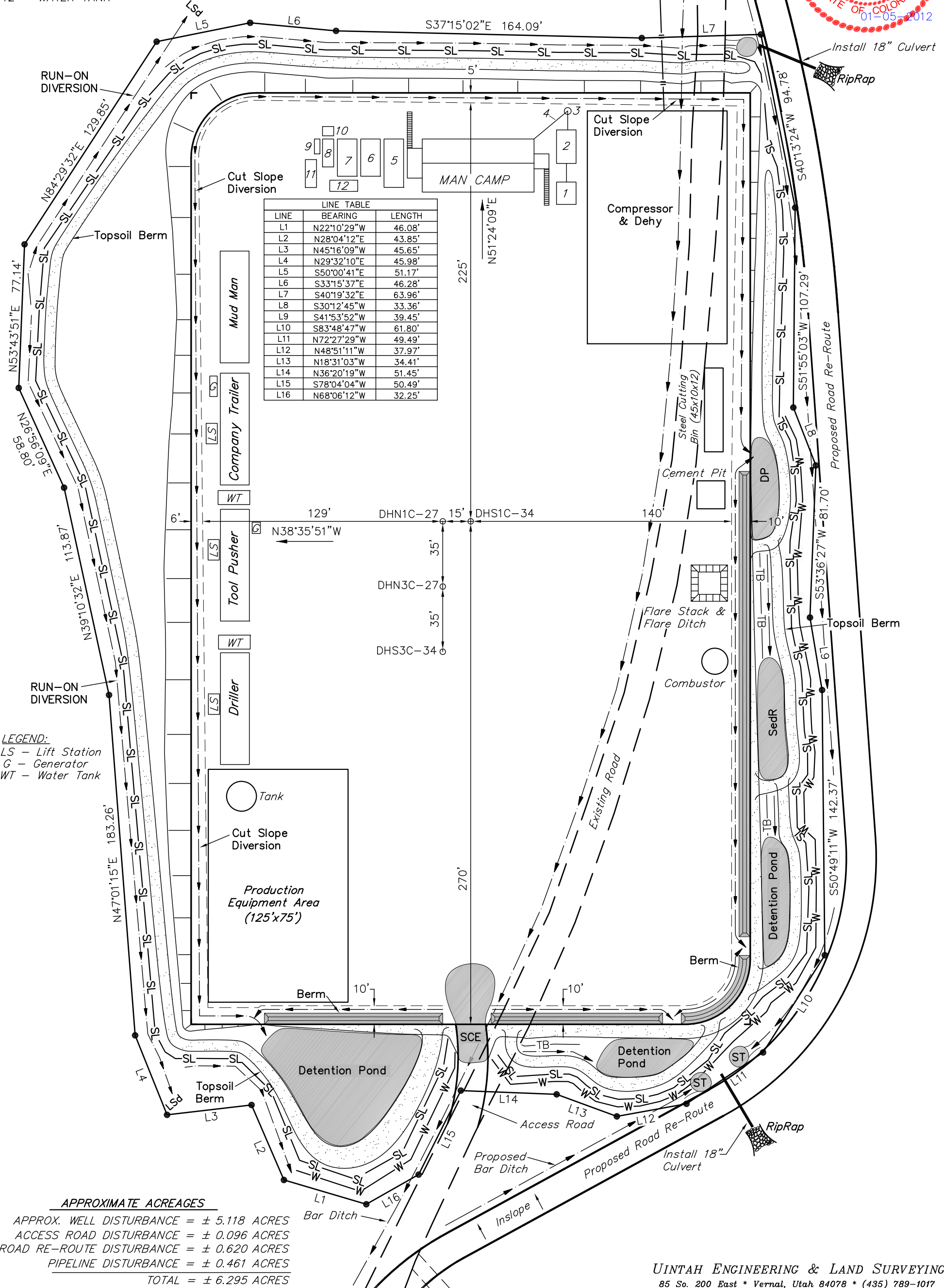
- 1 - OVERFLOW
- 2 - SEWER TANK
- 3 - LIFT STATION
- 4 - SEWER LINE
- 5 - WATER TANK (FIRE SUPPRESSION, 2500 Gals.)
- 6 - FREEZER
- 7 - STORAGE
- 8 - GENERATOR
- 9 - FUEL
- 10 - TRANSFORMER
- 11 - BEAR PROOF TRASH CANS (2) 30 GALLON.
- 12 - WATER TANK

SCALE: 1" = 50'
DATE: 12-07-11
DRAWN BY: D.R.B.
Revised: 01-05-12 D.R.B.

Encana OIL & GAS (USA) INC.
SURFACE DISTURBANCE AREA FOR
WELL PAD H34 6102
SECTION 34, T6S, R102W, 6th P.M.
SE 1/4 NE 1/4



Sheet 7 of 11



- LEGEND:
- LS - Lift Station
 - G - Generator
 - WT - Water Tank

APPROXIMATE ACREAGES
APPROX. WELL DISTURBANCE = ± 5.118 ACRES
ACCESS ROAD DISTURBANCE = ± 0.096 ACRES
ROAD RE-ROUTE DISTURBANCE = ± 0.620 ACRES
PIPELINE DISTURBANCE = ± 0.461 ACRES
TOTAL = ± 6.295 ACRES