

Well Name: **Strear 22-10**

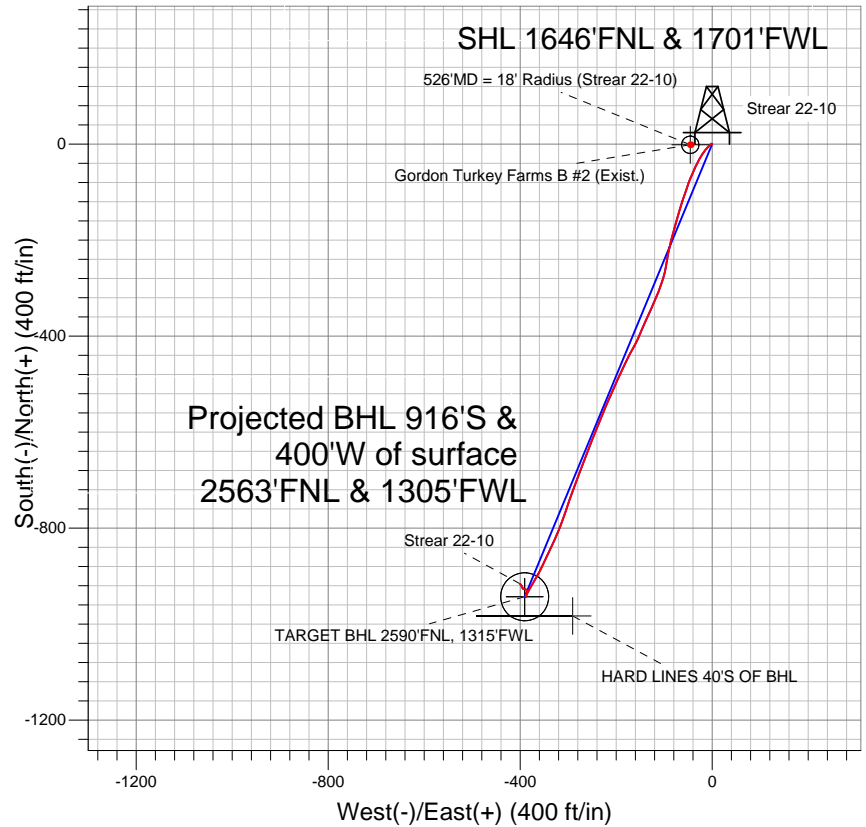
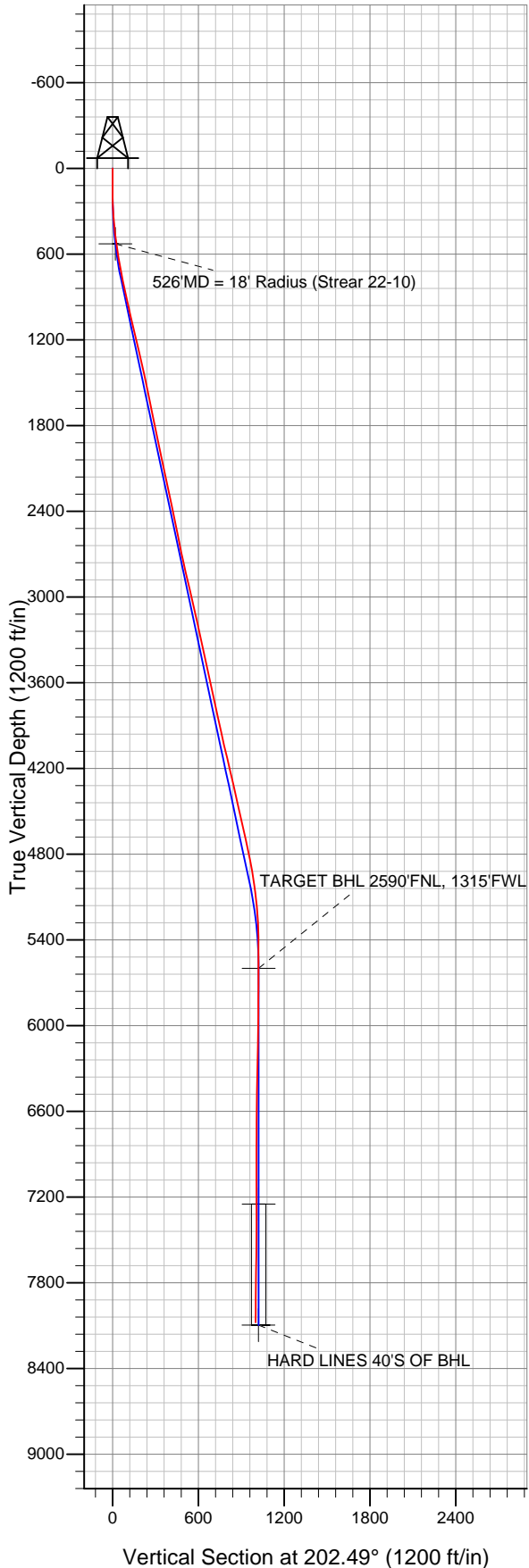
Surface Location: Strear 18-10-9F Pad Sec.10-T2N-R67W
North American Datum 1983 US State Plane 1983 Colorado Northern Zone

Ground Elevation: 4942.0

+N/-S	+E/-W	Northing	Easting	Latitude	Longitude	Slot
0.0	0.0	1300052.22	3173352.03	40.155374	-104.879807	

Original Well Elev WELL @ 4957.0ft (Original Well Elev)

Anadarko, Weld County CO



LEGEND

- Strear 22-10, Wellbore #1, Plan #1 (8-23-11) V0
- Gordon Turkey Farms B #2 (Exist.), Wellbore #1, Design #1 V0
- Wellbore #1
- Survey #1

Final Survey Plot

Projected Final Survey -
8184'MD & 8077'TVD @ 999'VS
1.2 deg Inc 327.6 deg AZ

Project: SEC.10-T2N-R67W
Site: Strear 18-10-9F Pad Sec.10-T2N-R67W
Well: Strear 22-10
Plan: Wellbore #1



Directional

Anadarko, Weld County CO

SEC.10-T2N-R67W

Strear 18-10-9F Pad Sec.10-T2N-R67W

Strear 22-10

Wellbore #1

Survey: Survey #1

Standard Survey Report

14 October, 2011

Company:	Anadarko, Weld County CO	Local Co-ordinate Reference:	Well Strear 22-10
Project:	SEC.10-T2N-R67W	TVD Reference:	WELL @ 4957.0ft (Original Well Elev)
Site:	Strear 18-10-9F Pad Sec.10-T2N-R67W	MD Reference:	WELL @ 4957.0ft (Original Well Elev)
Well:	Strear 22-10	North Reference:	True
Wellbore:	Wellbore #1	Survey Calculation Method:	Minimum Curvature
Design:	Wellbore #1	Database:	Landmark

Project	SEC.10-T2N-R67W, Weld County, Colorado		
Map System:	US State Plane 1983	System Datum:	Mean Sea Level
Geo Datum:	North American Datum 1983		Using Well Reference Point
Map Zone:	Colorado Northern Zone		Using geodetic scale factor

Site	Strear 18-10-9F Pad Sec.10-T2N-R67W		
Site Position:		Northing:	1,300,092.30ft
From:	Lat/Long	Easting:	3,173,351.75ft
Position Uncertainty:	0.0 ft	Slot Radius:	"
		Latitude:	40.155484
		Longitude:	-104.879807
		Grid Convergence:	0.40 °

Well	Strear 22-10		
Well Position	+N/-S	0.0 ft	Northing:
	+E/-W	0.0 ft	Easting:
Position Uncertainty		0.0 ft	Wellhead Elevation:
			Latitude:
			Longitude:
			Ground Level:

Wellbore	Wellbore #1				
Magnetics	Model Name	Sample Date	Declination (°)	Dip Angle (°)	Field Strength (nT)
	IGRF2010	8/30/2011	8.88	66.83	52,967

Design	Wellbore #1				
Audit Notes:					
Version:	1.0	Phase:	ACTUAL	Tie On Depth:	0.0
Vertical Section:	Depth From (TVD) (ft)	+N/-S (ft)	+E/-W (ft)	Direction (°)	
	0.0	0.0	0.0	203.60	

Survey Program	Date	10/14/2011			
From (ft)	To (ft)	Survey (Wellbore)	Tool Name	Description	
149.0	8,184.0	Survey #1 (Wellbore #1)	MWD	MWD - Standard	

Survey										
Measured Depth (ft)	Inclination (°)	Azimuth (°)	Vertical Depth (ft)	+N/-S (ft)	+E/-W (ft)	Vertical Section (ft)	Dogleg Rate (°/100ft)	Build Rate (°/100ft)	Turn Rate (°/100ft)	
0.0	0.00	0.00	0.0	0.0	0.0	0.0	0.00	0.00	0.00	
149.0	0.80	302.60	149.0	0.6	-0.9	-0.2	0.54	0.54	0.00	
237.0	2.20	236.00	237.0	-0.1	-2.8	1.2	2.30	1.59	-75.68	
328.0	4.00	224.90	327.8	-3.3	-6.5	5.6	2.08	1.98	-12.20	
420.0	5.60	218.60	419.5	-9.1	-11.5	12.9	1.83	1.74	-6.85	
512.0	7.70	215.80	510.9	-17.6	-18.0	23.3	2.31	2.28	-3.04	
529.1	7.97	214.34	527.8	-19.5	-19.3	25.6	1.94	1.56	-8.54	
526'MD = 18' Radius (Strear 22-10)										
605.0	9.20	208.90	602.9	-29.1	-25.2	36.8	1.94	1.63	-7.17	
638.0	9.90	207.50	635.4	-34.0	-27.8	42.2	2.23	2.12	-4.24	
697.0	10.90	206.30	693.4	-43.5	-32.6	52.9	1.73	1.69	-2.03	
787.0	11.90	205.90	781.7	-59.4	-40.4	70.6	1.11	1.11	-0.44	
881.0	13.00	199.40	873.5	-78.1	-48.2	90.9	1.89	1.17	-6.91	

Company:	Anadarko, Weld County CO	Local Co-ordinate Reference:	Well Strear 22-10
Project:	SEC.10-T2N-R67W	TVD Reference:	WELL @ 4957.0ft (Original Well Elev)
Site:	Strear 18-10-9F Pad Sec.10-T2N-R67W	MD Reference:	WELL @ 4957.0ft (Original Well Elev)
Well:	Strear 22-10	North Reference:	True
Wellbore:	Wellbore #1	Survey Calculation Method:	Minimum Curvature
Design:	Wellbore #1	Database:	Landmark

Survey

Measured Depth (ft)	Inclination (°)	Azimuth (°)	Vertical Depth (ft)	+N/-S (ft)	+E/-W (ft)	Vertical Section (ft)	Dogleg Rate (°/100ft)	Build Rate (°/100ft)	Turn Rate (°/100ft)
976.0	12.80	198.50	966.1	-98.2	-55.0	112.0	0.30	-0.21	-0.95
1,071.0	11.90	197.00	1,058.9	-117.5	-61.3	132.2	1.01	-0.95	-1.58
1,166.0	12.70	197.30	1,151.7	-136.9	-67.2	152.3	0.84	0.84	0.32
1,262.0	13.30	195.90	1,245.2	-157.6	-73.4	173.8	0.71	0.63	-1.46
1,357.0	13.30	196.30	1,337.7	-178.6	-79.4	195.4	0.10	0.00	0.42
1,452.0	13.20	194.00	1,430.1	-199.6	-85.1	217.0	0.56	-0.11	-2.42
1,547.0	12.10	192.20	1,522.8	-219.8	-89.9	237.4	1.23	-1.16	-1.89
1,642.0	11.70	188.70	1,615.8	-239.1	-93.4	256.5	0.87	-0.42	-3.68
1,737.0	12.00	191.50	1,708.8	-258.3	-96.9	275.5	0.68	0.32	2.95
1,832.0	12.00	196.60	1,801.7	-277.4	-101.6	294.9	1.12	0.00	5.37
1,928.0	11.50	198.00	1,895.7	-296.1	-107.5	314.3	0.60	-0.52	1.46
2,023.0	11.90	203.30	1,988.7	-314.1	-114.3	333.6	1.21	0.42	5.58
2,118.0	12.00	205.60	2,081.7	-332.0	-122.4	353.2	0.51	0.11	2.42
2,213.0	11.80	202.60	2,174.6	-349.9	-130.4	372.8	0.68	-0.21	-3.16
2,309.0	12.30	205.10	2,268.5	-368.2	-138.5	392.8	0.75	0.52	2.60
2,406.0	11.80	202.90	2,363.4	-386.7	-146.7	413.1	0.70	-0.52	-2.27
2,501.0	11.70	202.60	2,456.4	-404.5	-154.2	432.4	0.12	-0.11	-0.32
2,596.0	11.30	210.60	2,549.5	-421.4	-162.7	451.3	1.73	-0.42	8.42
2,691.0	11.50	207.90	2,642.6	-437.8	-171.8	470.0	0.60	0.21	-2.84
2,787.0	12.60	205.40	2,736.5	-455.7	-180.8	490.0	1.27	1.15	-2.60
2,882.0	13.00	204.50	2,829.1	-474.8	-189.7	511.0	0.47	0.42	-0.95
2,977.0	13.40	204.00	2,921.6	-494.6	-198.6	532.7	0.44	0.42	-0.53
3,072.0	12.90	204.00	3,014.1	-514.3	-207.4	554.3	0.53	-0.53	0.00
3,167.0	12.70	204.30	3,106.8	-533.5	-216.0	575.4	0.22	-0.21	0.32
3,262.0	12.60	203.30	3,199.5	-552.6	-224.4	596.2	0.25	-0.11	-1.05
3,358.0	12.10	202.10	3,293.2	-571.5	-232.3	616.7	0.59	-0.52	-1.25
3,453.0	12.40	199.80	3,386.1	-590.3	-239.5	636.9	0.60	0.32	-2.42
3,548.0	12.30	203.10	3,478.9	-609.2	-246.9	657.1	0.75	-0.11	3.47
3,643.0	12.20	202.60	3,571.7	-627.8	-254.8	677.3	0.15	-0.11	-0.53
3,738.0	12.20	201.00	3,664.6	-646.5	-262.2	697.4	0.36	0.00	-1.68
3,833.0	12.20	198.70	3,757.4	-665.3	-269.0	717.4	0.51	0.00	-2.42
3,928.0	12.20	201.50	3,850.3	-684.2	-275.9	737.4	0.62	0.00	2.95
4,024.0	12.40	201.00	3,944.1	-703.2	-283.3	757.9	0.24	0.21	-0.52
4,119.0	13.10	199.60	4,036.7	-722.9	-290.6	778.8	0.81	0.74	-1.47
4,214.0	13.50	199.10	4,129.2	-743.5	-297.9	800.6	0.44	0.42	-0.53
4,309.0	13.40	198.50	4,221.6	-764.4	-305.0	822.6	0.18	-0.11	-0.63
4,404.0	13.40	200.80	4,314.0	-785.2	-312.4	844.6	0.56	0.00	2.42
4,499.0	11.80	201.40	4,406.7	-804.5	-319.8	865.3	1.69	-1.68	0.63
4,595.0	12.10	203.10	4,500.6	-822.9	-327.4	885.1	0.48	0.31	1.77
4,690.0	12.80	206.30	4,593.4	-841.5	-335.9	905.6	1.03	0.74	3.37
4,785.0	13.70	205.20	4,685.9	-861.1	-345.4	927.4	0.98	0.95	-1.16
4,880.0	11.90	205.90	4,778.5	-880.1	-354.5	948.4	1.90	-1.89	0.74
4,975.0	10.20	209.10	4,871.7	-896.3	-362.8	966.6	1.90	-1.79	3.37
5,070.0	8.80	210.00	4,965.4	-909.9	-370.5	982.2	1.48	-1.47	0.95
5,166.0	7.70	208.90	5,060.4	-921.9	-377.3	995.9	1.16	-1.15	-1.15
5,260.0	5.80	210.50	5,153.8	-931.5	-382.8	1,006.8	2.03	-2.02	1.70
5,355.0	3.50	209.30	5,248.5	-938.2	-386.6	1,014.5	2.42	-2.42	-1.26
5,450.0	1.10	201.00	5,343.4	-941.6	-388.4	1,018.3	2.54	-2.53	-8.74
5,546.0	0.60	130.50	5,439.4	-942.7	-388.3	1,019.4	1.11	-0.52	-73.44
5,641.0	0.30	123.80	5,534.4	-943.2	-387.7	1,019.5	0.32	-0.32	-7.05
5,706.6	0.20	87.51	5,600.0	-943.3	-387.5	1,019.5	0.28	-0.15	-55.30
TARGET BHL 2590'FNL, 1315'FWL									
5,736.0	0.20	64.10	5,629.4	-943.3	-387.4	1,019.5	0.28	-0.01	-79.71
5,831.0	0.40	341.30	5,724.4	-942.9	-387.3	1,019.1	0.45	0.21	-87.16

Company:	Anadarko, Weld County CO	Local Co-ordinate Reference:	Well Strear 22-10
Project:	SEC.10-T2N-R67W	TVD Reference:	WELL @ 4957.0ft (Original Well Elev)
Site:	Strear 18-10-9F Pad Sec.10-T2N-R67W	MD Reference:	WELL @ 4957.0ft (Original Well Elev)
Well:	Strear 22-10	North Reference:	True
Wellbore:	Wellbore #1	Survey Calculation Method:	Minimum Curvature
Design:	Wellbore #1	Database:	Landmark

Survey

Measured Depth (ft)	Inclination (°)	Azimuth (°)	Vertical Depth (ft)	+N/-S (ft)	+E/-W (ft)	Vertical Section (ft)	Dogleg Rate (°/100ft)	Build Rate (°/100ft)	Turn Rate (°/100ft)
5,926.0	0.40	6.40	5,819.4	-942.2	-387.4	1,018.5	0.18	0.00	26.42
6,021.0	0.60	3.60	5,914.4	-941.4	-387.3	1,017.7	0.21	0.21	-2.95
6,116.0	0.40	13.80	6,009.3	-940.6	-387.2	1,017.0	0.23	-0.21	10.74
6,212.0	0.70	10.10	6,105.3	-939.7	-387.1	1,016.1	0.31	0.31	-3.85
6,307.0	1.00	11.30	6,200.3	-938.3	-386.8	1,014.7	0.32	0.32	1.26
6,402.0	1.20	12.50	6,295.3	-936.5	-386.4	1,012.9	0.21	0.21	1.26
6,497.0	1.40	23.60	6,390.3	-934.5	-385.7	1,010.8	0.34	0.21	11.68
6,592.0	1.60	15.90	6,485.3	-932.1	-384.9	1,008.3	0.30	0.21	-8.11
6,687.0	0.50	309.60	6,580.2	-930.6	-384.9	1,006.9	1.55	-1.16	-69.79
6,782.0	0.70	327.70	6,675.2	-929.9	-385.5	1,006.4	0.29	0.21	19.05
6,878.0	0.80	302.80	6,771.2	-929.0	-386.4	1,006.0	0.35	0.10	-25.94
6,973.0	1.10	309.80	6,866.2	-928.1	-387.6	1,005.6	0.34	0.32	7.37
7,068.0	1.10	269.30	6,961.2	-927.5	-389.2	1,005.7	0.80	0.00	-42.63
7,163.0	1.60	301.70	7,056.2	-926.8	-391.3	1,005.9	0.94	0.53	34.11
7,258.0	0.40	258.30	7,151.2	-926.2	-392.7	1,005.9	1.41	-1.26	-45.68
7,354.0	0.60	246.90	7,247.2	-926.4	-393.5	1,006.5	0.23	0.21	-11.88
7,356.8	0.58	248.05	7,250.0	-926.4	-393.5	1,006.5	0.81	-0.69	41.05
TARGET CIRCLE 2590'FNL & 1315'FWL									
7,449.0	0.40	345.90	7,342.2	-926.3	-394.1	1,006.6	0.81	-0.20	106.13
7,544.0	0.90	328.10	7,437.1	-925.3	-394.5	1,005.9	0.56	0.53	-18.74
7,639.0	0.90	333.00	7,532.1	-924.0	-395.3	1,005.0	0.08	0.00	5.16
7,734.0	0.90	333.00	7,627.1	-922.7	-395.9	1,004.1	0.00	0.00	0.00
7,829.0	1.00	344.40	7,722.1	-921.3	-396.5	1,002.9	0.22	0.11	12.00
7,925.0	1.00	321.40	7,818.1	-919.8	-397.3	1,001.9	0.42	0.00	-23.96
8,020.0	1.10	322.30	7,913.1	-918.4	-398.3	1,001.1	0.11	0.11	0.95
8,115.0	1.00	322.80	8,008.1	-917.0	-399.4	1,000.2	0.11	-0.11	0.53
8,184.0	1.20	327.60	8,077.1	-916.0	-400.1	999.5	0.32	0.29	6.96
HARD LINES 40'S OF BHL									

Checked By: _____	Approved By: _____	Date: _____
-------------------	--------------------	-------------