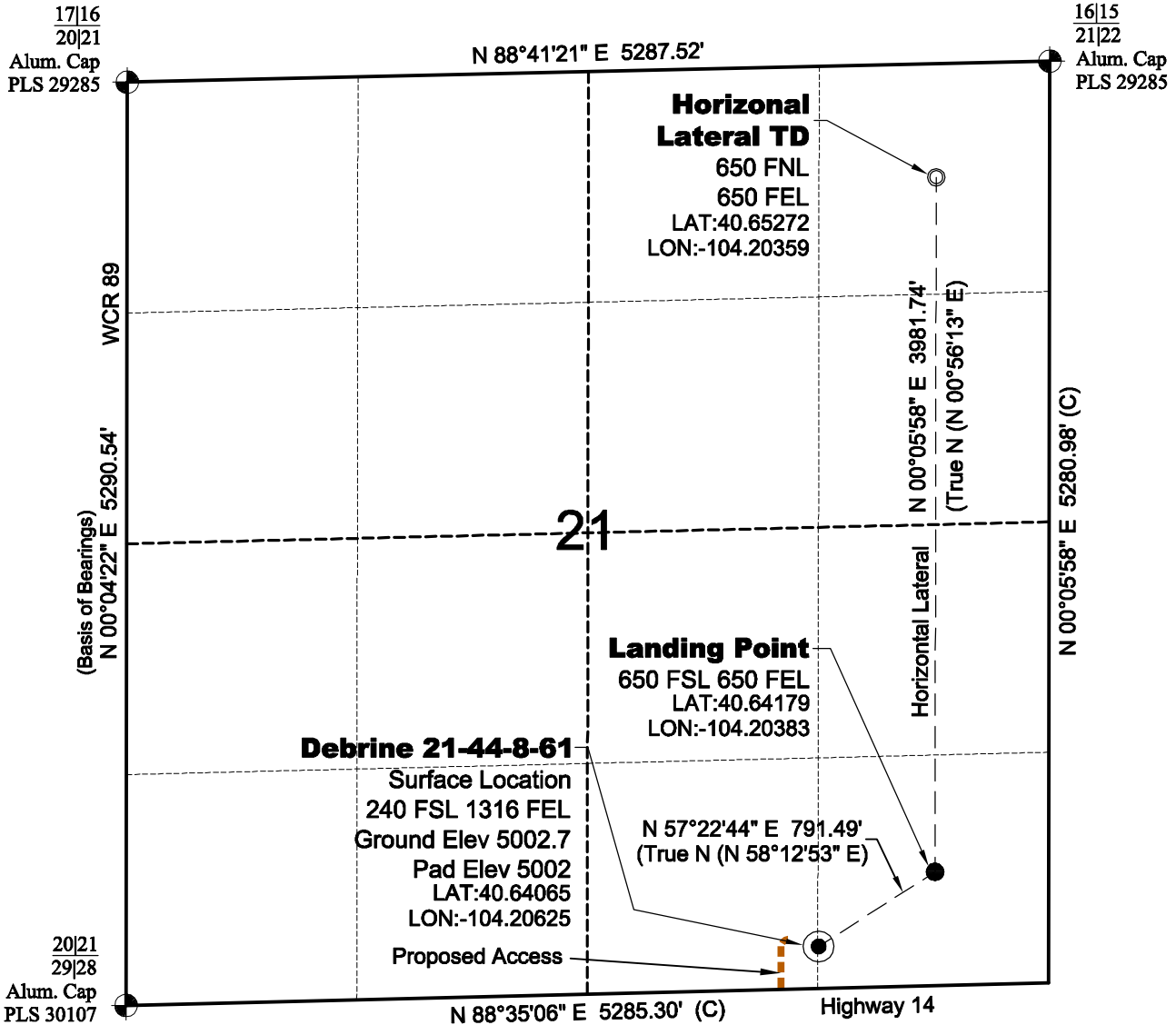


WELL LOCATION MAP

DEBRINE
21-34-8-61 PAD



SURVEYOR'S STATEMENT

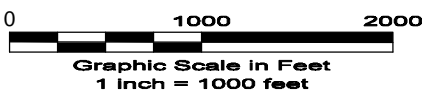
The undersigned hereby states that the well location shown hereon was staked on the ground based on existing monumentation and/or physical evidence found in the field and is correct to the best of my knowledge, information and belief.

NOTES

- 1.) Horizontal coordinates based on NGS control point "SNOW" and vertical datum based on NGS control point "G 209" with an elevation of 4955.32. NAVD 1988.
 - 2.) All directions, distances, and dimensions shown hereon are based on coordinates from the "Colorado coordinate system of 1983 north zone" (article 52 of title 38, C.R.S.).
 - 3.) All section line dimensions shown hereon are based on field measurements of existing monuments and/or physical evidence found in the field unless otherwise indicated. Refer to land survey plats deposited in Weld County.
 - 4.) Physical features shown hereon are for graphical representation only.
 - 5.) See Form 2A for visible improvements within 400' of wellhead.
 - 6.) Distances to nearest section lines are measured perpendicularly.
 - 7.) This is not a land survey nor land survey plat.
 - 8.) Date of Survey 11/15/11; Date of Drawing 11/22/11. REV 2
- PDOP Reading: 2.5 Instrument Operator: Marc Woodard



North



CARRIZO OIL & GAS, INC
DEBRINE 21-44-8-61

SL SE1/4 SE1/4 SEC.21 T8N R61W
HL TD NE1/4 NE1/4 SEC.21 T8N R61W
6th PM WELD COUNTY COLORADO