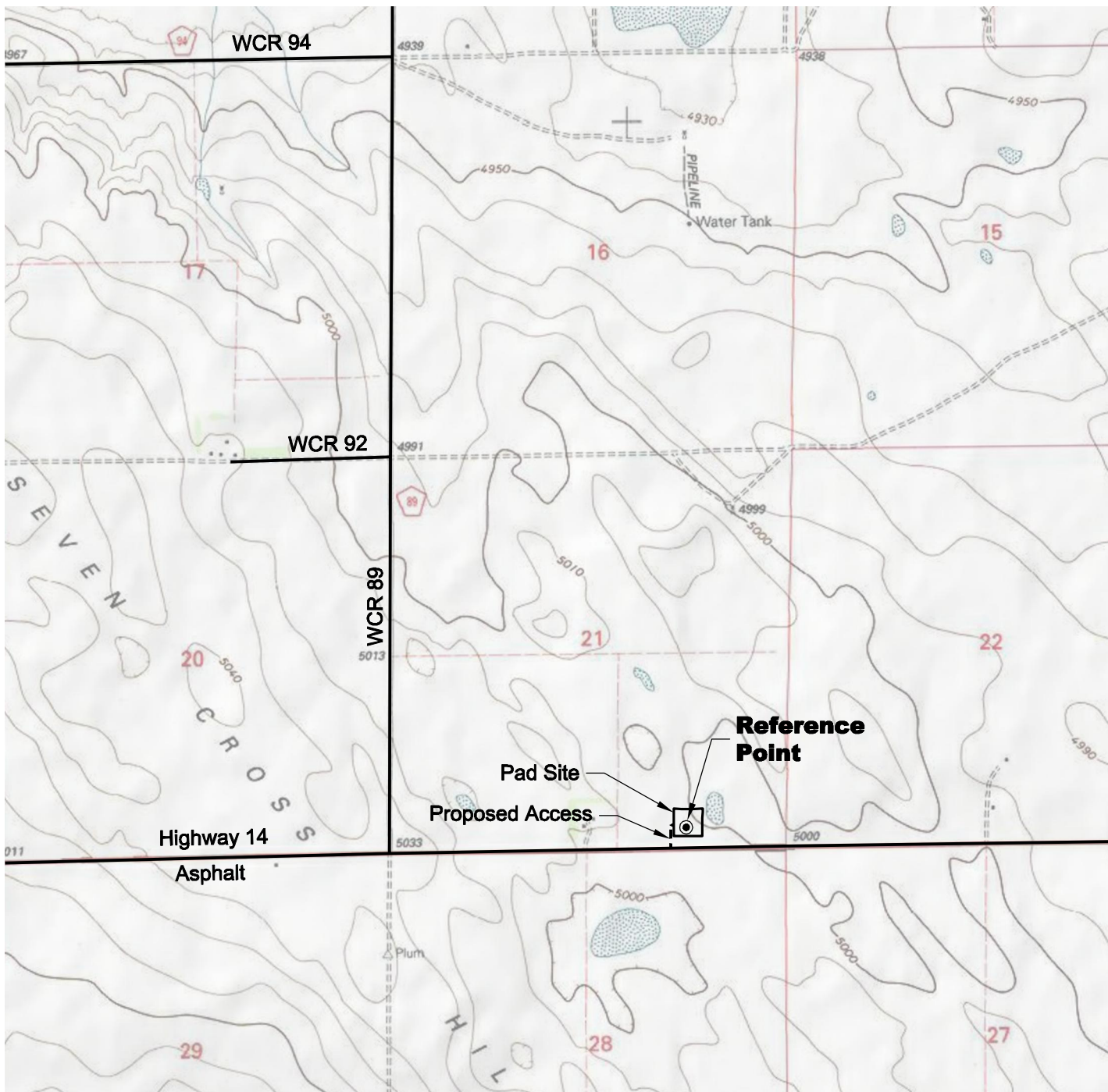


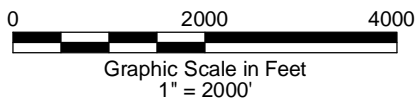
ACCESS ROAD MAP



DRIVING DIRECTIONS:

MP 0.0 - Intersection of Highway 14 a.k.a. WCR 90 & Highway 392
 a.k.a. WCR 77 in Briggsdale; East on Highway 14
 MP 6.6 - Left on access onto Debrine 21-34-8-61 Pad

11/22/11



LAND SURVEYING AND MAPPING
 LAFAYETTE - WINTER PARK
 Ph 303 666 0379 Fx 303 665 6320

CARRIZO OIL & GAS, INC
DEBRINE 21-34-8-61 PAD

SW1/4 SE1/4 SEC. 21 T8N R61W
6th PM WELD COUNTY COLORADO