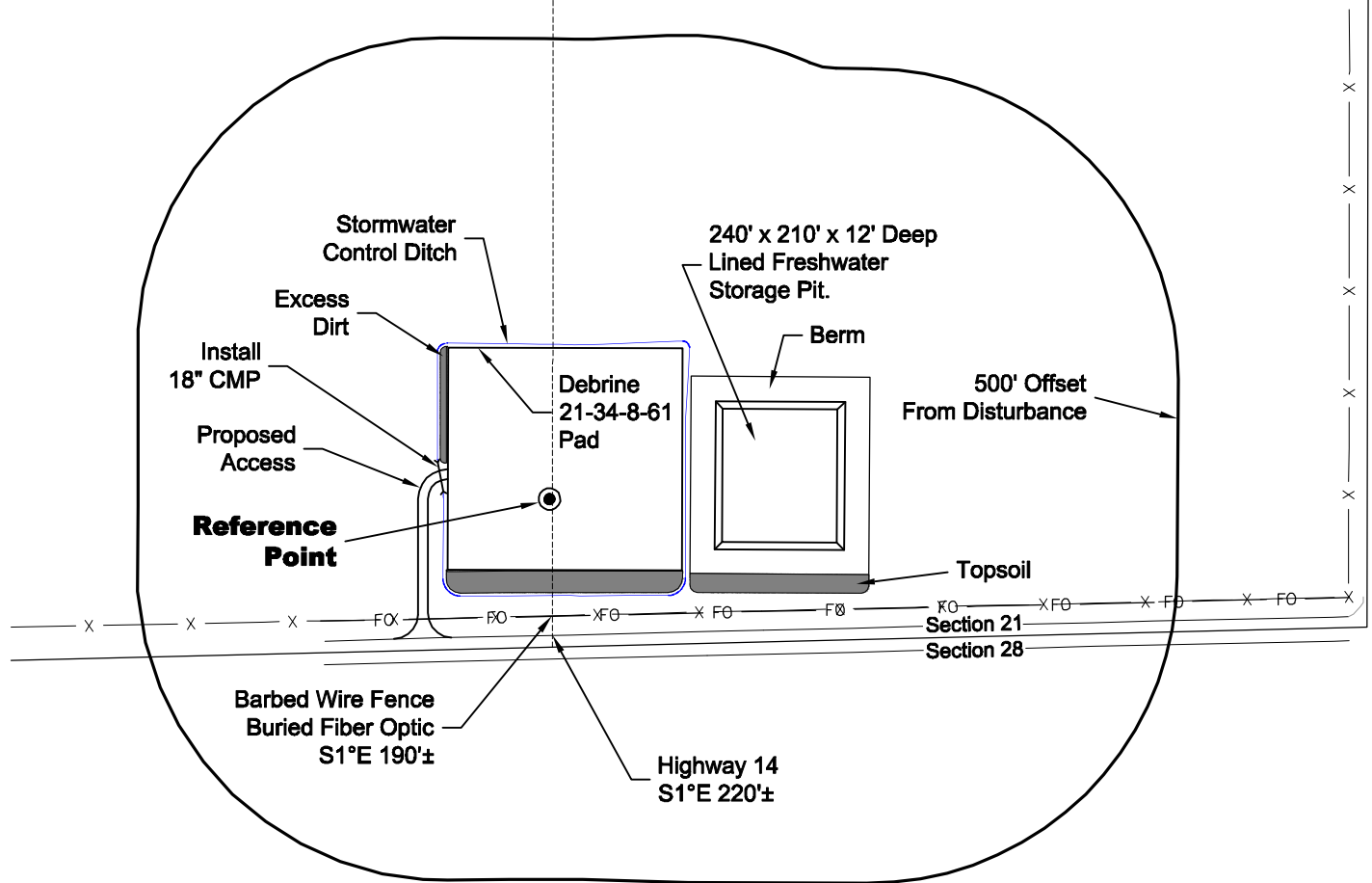


# LOCATION DRAWING

**VEGETATION:**  
DRY LAND PASTURE

**SURFACE USE:**  
GRAZING

REFERENCE POINT	
LATITUDE:	40.64065
LONGITUDE:	-104.20629
FOOTAGE:	240 FSL 1326 FEL
GROUND ELEVATION:	5002.7
PDOP:	2.5 DATE: 11/15/2011
INSTRUMENT OPERATOR: MARC WOODARD	



0 300 600  
Graphic Scale in Feet  
1" = 300'

**DISTURBANCE ACREAGE:**  
4.1± DRILLING OPERATIONS  
2.3± FRESHWATER STORAGE PIT  
1.0± INTERIM RECLAIM

**NOTE:**  
ALL PRODUCTION FACILITIES WILL BE ON PAD.

11/22/11



**LAND SURVEYING AND MAPPING**  
**LAFAYETTE - WINTER PARK**  
Ph 303 666 0379 Fx 303 665 6320

**CARRIZO OIL & GAS, INC**  
**DEBRINE 21-34-8-61 PAD**

**SW1/4 SE1/4 SEC. 21 T8N R61W**  
**6th PM WELD COUNTY COLORADO**