

Steil Surveying Services, LLC

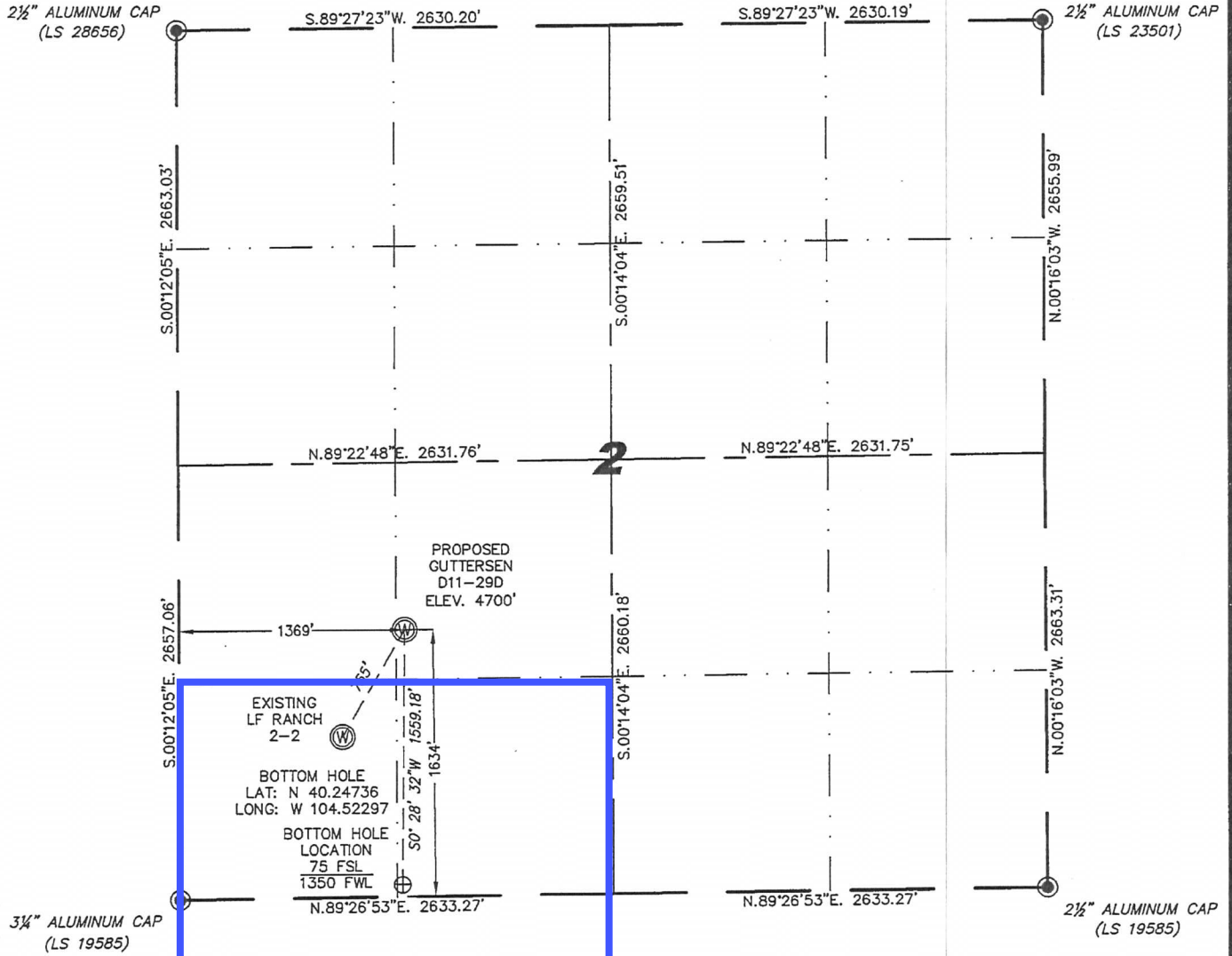
1102 West 19th Street P.O. BOX 2073

Cheyenne, Wyoming 82001

WELL LOCATION CERTIFICATE

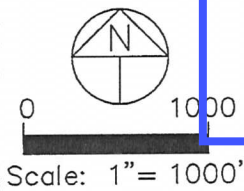
THIS MAP DOES NOT REPRESENT A BOUNDARY SURVEY

SECTION 2
TOWNSHIP 3 NORTH
RANGE 64 WEST



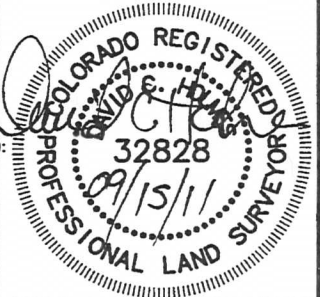
IN ACCORDANCE WITH A REQUEST FROM BRIAN DEPOSE - NOBLE ENERGY INC, STEIL SURVEYING SERVICES, LLC HAS DETERMINED THE LOCATION OF THE GUTTERSEN D11-29D WELL TO BE 1634' FSL, 1369' FWL, AS MEASURED AT NINETY (90) DEGREES FROM THE SECTION LINES, SECTION 2, TOWNSHIP 3 NORTH, RANGE 64 WEST, 6TH PRINCIPLE MERIDIAN, WELD COUNTY, COLORADO.

I HEREBY CERTIFY THAT THIS WELL LOCATION CERTIFICATE WAS PREPARED BY ME, OR UNDER MY DIRECT SUPERVISION, THAT THE FIELD WORK WAS COMPLETED ON 09/08/2011, FOR AND ON BEHALF OF NOBLE ENERGY INC, THAT IT IS NOT A LAND SURVEY PLAT OR AN IMPROVEMENT SURVEY PLAT, AND THAT IT IS NOT TO BE RELIED UPON FOR ESTABLISHMENT OF FENCE, BUILDING, OR OTHER FUTURE IMPROVEMENT LINES.



- NOTES:
- 1) BASIS OF BEARINGS FOR THIS MAP ARE BASED UPON GPS OBSERVATIONS MADE ON 9/08/2011 BETWEEN MONUMENTS LOCATED AT THE SOUTHEAST SECTION CORNER AND THE NORTHEAST SECTION CORNER OF SAID SECTION AND WITH ALL BEARINGS SHOWN HEREON RELATIVE THERETO.
 - 2) COORDINATES SHOWN ARE COLORADO STATE PLANE (NORTH ZONE) NAD 83
 - 3) ELEVATIONS ARE BASED UPON NGS OPUS SOLUTION NAVD 88 DATUM.
 - 4) THE NEAREST EXISTING WELL IS: LF RANCH 2-2, 755' SOUTHWEST.
 - 5) SEE LOCATION DRAWING FOR ALL IMPROVEMENTS WITHIN VISIBLE IMPROVEMENT LIMIT.
 - 6) THE LOCATION FALLS IN PASTURE LAND.

LATITUDE & LONGITUDE (NAD 83 SURFACE HOLE):
 LATITUDE: N 40.25164°
 LONGITUDE: W 104.52287°
 PDOP: 2.2
 QUARTER-QUARTER: NE/4SW/4
 NEAREST PROPERTY LINE: 1025' NORTH



NOTICE: According to Colorado law you MUST commence any legal action based upon any defect in this W.L.C. within three years after you first discover such defect. In no event may any action based upon any defect in this W.L.C. be commenced more than ten years from this sold date of the certification shown hereon.

- LEGEND
- FOUND SURVEY MONUMENT PER MONUMENT RECORD - EXCEPTIONS NOTED.
 - (C) CALCULATED DIMENSION

Completed 09/14/2011

David C. Holmes
 Professional Land Surveyor Registration No. 32828
 State of Colorado

JOB #11086