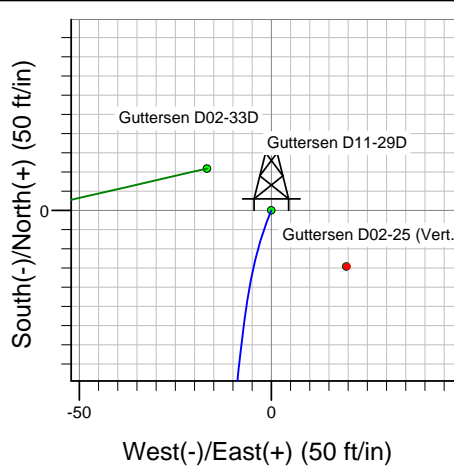
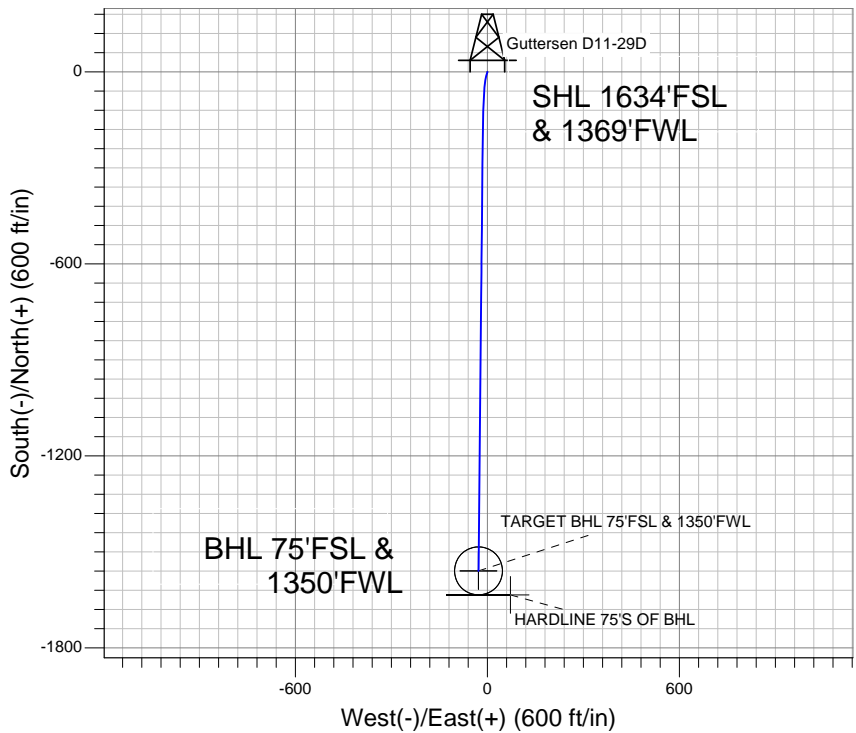
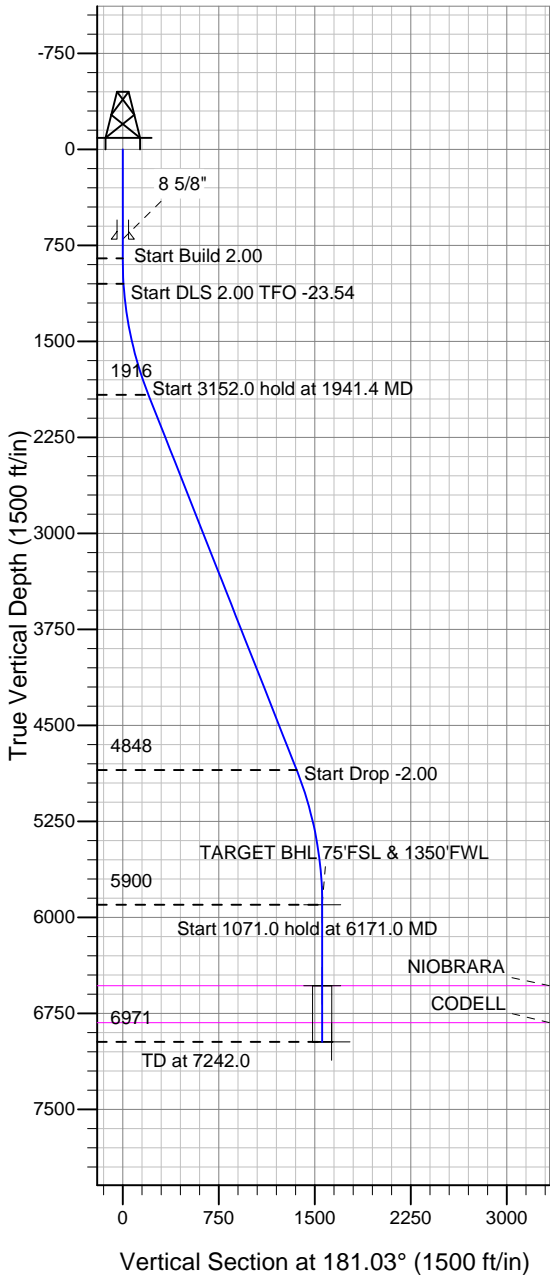


Well Name: Guttersen D11-29D

Surface Location: Guttersen D11-29D Pad Sec.2-T3N-R64W
 North American Datum 1983, US State Plane 1983 Colorado Northern Zone
 Ground Elevation: 4700.0

+N/-S	+E/-W	Northing	Easting	Latitude	Longitude	Slot
0.0	0.0	1336016.77	3272730.85	40.251640	-104.522870	
Original Well EleWELL @ 4713.0ft (Original Well Elev)						

NOBLE ENERGY INC WELD COUNTY CO



Guttersen D11-29D Pad Sec.2-T3N-R64W
 Guttersen D11-29D
 Noble Guttersen D11-29D Plan #1 (10-11-11)
 13:02, October 13 2011



Azimuths to True North
 Magnetic North: 8.68°
 Magnetic Field
 Strength: 53046.4snT
 Dip Angle: 66.96°
 Date: 10/11/2011
 Model: IGRF2010

WELLBORE TARGET DETAILS (LAT/LONG)

Name	TVD	+N/-S	+E/-W	Latitude	Longitude	Shape
TARGET BHL 75'FSL & 1350'FWL	5900.0	-1559.2	-27.9	40.247360	-104.522970	Point
TARGET CIRCLE 75'FSL & 1350'FWL	6533.0	-1559.2	-27.9	40.247360	-104.522970	Circle (Radius: 75.0)
HARDLINE 75'S OF BHL	6971.0	-1634.2	72.1	40.247154	-104.522612	Polygon

SECTION DETAILS

Sec	MD	Inc	Azi	TVD	+N/-S	+E/-W	DLeg	TFace	VSec	Target
1	0.0	0.00	0.00	0.0	0.0	0.0	0.00	0.00	0.0	
2	850.0	0.00	0.00	850.0	0.0	0.0	0.00	0.00	0.0	
3	1050.0	4.00	200.00	1049.8	-6.6	-2.4	2.00	200.00	6.6	
4	1941.4	21.55	180.56	1916.0	-201.1	-14.7	2.00	-23.54	201.3	
5	5093.4	21.55	180.56	4847.6	-1358.9	-26.0	0.00	0.00	1359.2	
6	6171.0	0.00	0.00	5900.0	-1559.2	-27.9	2.00	180.00	1559.5	TARGET BHL 75'FSL & 1350'FWL
7	7242.0	0.00	0.00	6971.0	-1559.2	-27.9	0.00	0.00	1559.5	