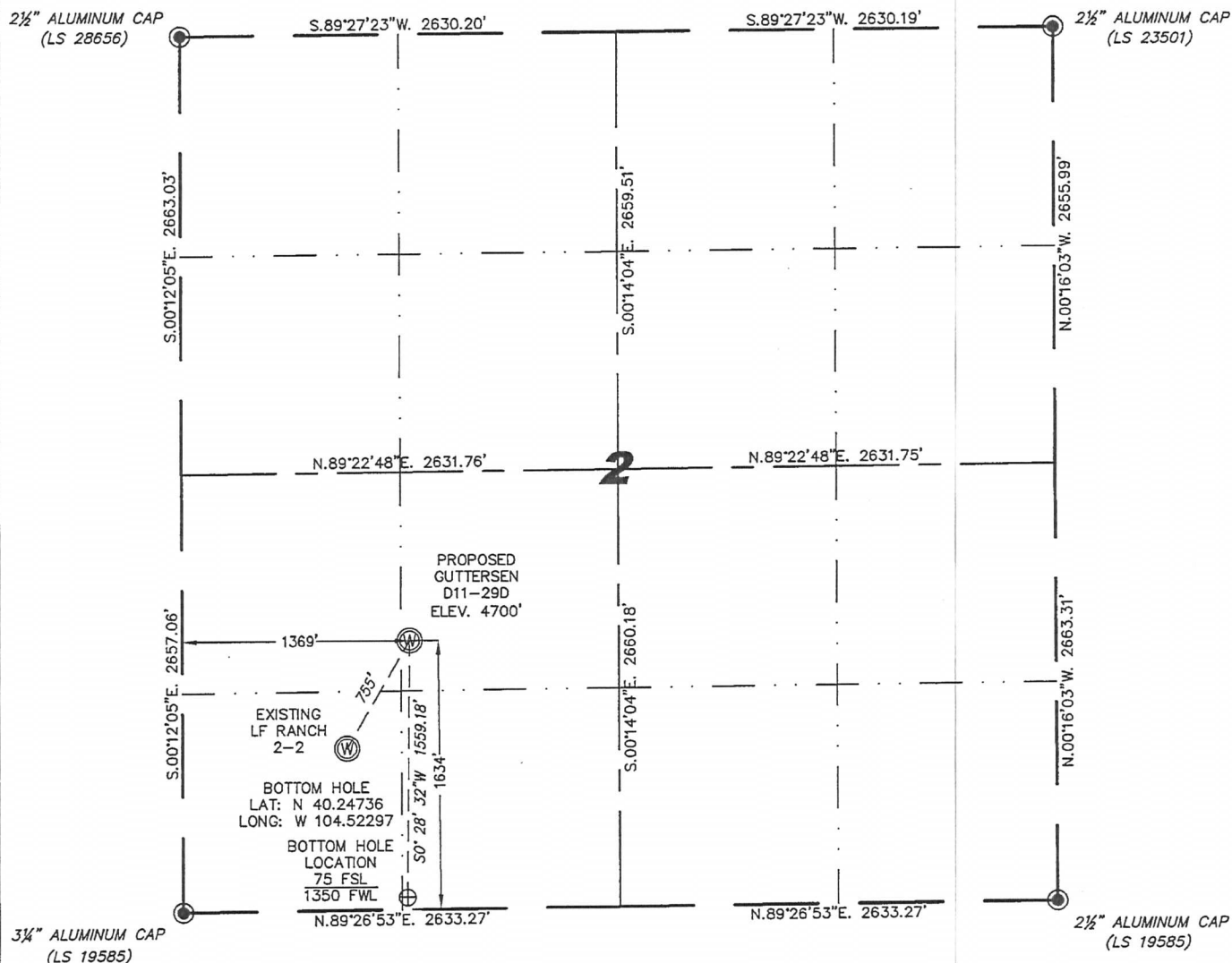


Cheyenne, Wyoming 82001

THIS MAP DOES NOT REPRESENT A BOUNDARY SURVEY

SECTION 2
TOWNSHIP 3 NORTH
RANGE 64 WEST



Scale: 1" = 1000'

IN ACCORDANCE WITH A REQUEST FROM BRIAN DEROSE - NOBLE ENERGY INC,
STEEL SURVEYING SERVICES, LLC HAS DETERMINED THE LOCATION OF THE GUTTERSEN D11-29D
WELL TO BE 1634' FSL, 1369' FWL, AS MEASURED AT NINETY (90) DEGREES FROM THE SECTION
LINES, SECTION 2, TOWNSHIP 3 NORTH, RANGE 64 WEST, 6TH PRINCIPLE MERIDIAN, WELD
COUNTY, COLORADO.

I HEREBY CERTIFY THAT THIS WELL LOCATION CERTIFICATE WAS PREPARED BY ME, OR UNDER MY DIRECT SUPERVISION, THAT THE FIELD WORK WAS COMPLETED ON 09/08/2011, FOR AND ON BEHALF OF NOBLE ENERGY INC, THAT IT IS NOT A LAND SURVEY PLAT OR AN IMPROVEMENT SURVEY PLAT, AND THAT IT IS NOT TO BE RELIED UPON FOR ESTABLISHMENT OF FENCE, BUILDING, OR OTHER FUTURE IMPROVEMENT LINES.

NOTES:

- 1) BASIS OF BEARINGS FOR THIS MAP ARE BASED UPON GPS OBSERVATIONS MADE ON 05/20/2011 BETWEEN MONUMENTS LOCATED AT THE SOUTHEAST SECTION CORNER AND THE NORTHEAST SECTION CORNER OF SAID SECTION AND WITH ALL BEARINGS SHOWN HEREON RELATIVE THERETO.
- 2) COORDINATES SHOWN ARE COLORADO STATE PLANE (NORTH ZONE) NAD 83
- 3) ELEVATIONS ARE BASED UPON NGS OPUS SOLUTION NAVD 88 DATUM.
- 4) THE NEAREST EXISTING WELL IS: LF RANCH 2-2, 755' SOUTHWEST.
- 5) SEE LOCATION DRAWING FOR ALL IMPROVEMENTS WITHIN VISIBLE IMPROVEMENT LIMIT.
- 6) THE LOCATION FALLS IN PASTURE LAND.

LATITUDE & LONGITUDE (NAD 83 SURFACE HOLE):

LATITUDE & LONGITUDE (NAD 83) SOURCE:
 LATITUDE: N 40.25164°
 LONGITUDE: W 104.52287°
 PDOP: 2.2
 QUARTER—QUARTER: NE/4SW/4
 NEAREST PROPERTY LINE: 1025' NORTH

LEGEND

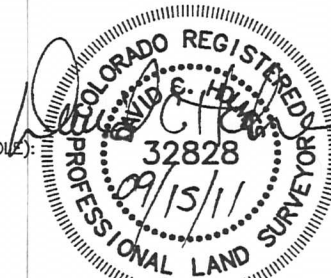
- ☒ FOUND SURVEY MONUMENT PER
 MONUMENT RECORD - EXCEPTIONS NOTED.
 (C) CALCULATED DIMENSION

NOTICE: According to Colorado law you MUST commence any legal action based upon any defect in this W.L.C. within three years after you first discover such defect. In no event may any action based upon any defect in this W.L.C. be commenced more than ten years from this sold date of the certification shown hereon.

David C. Holmes
Professional Land Surveyor Registration No. 32828
State of Colorado

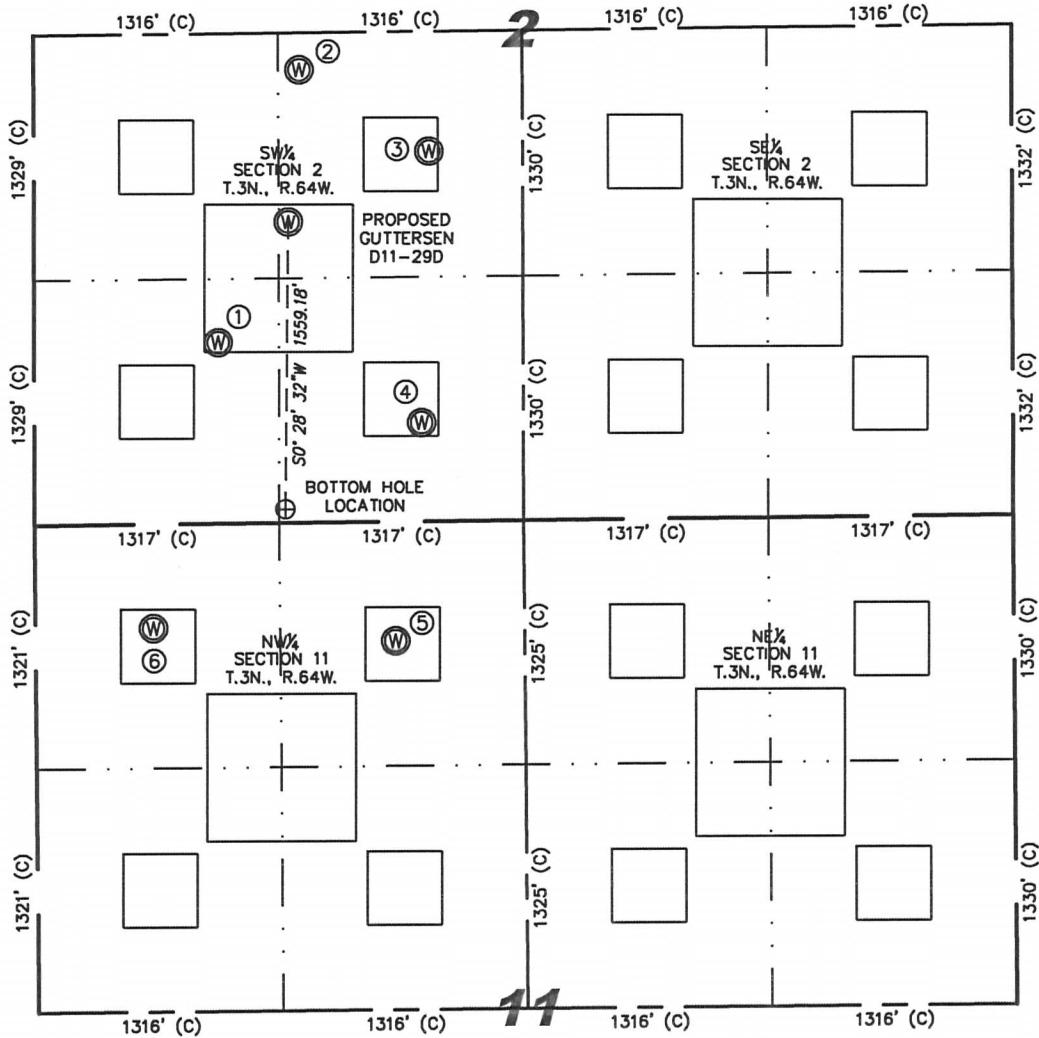
JOB #:11086

Completed 09/14/2011



SKETCH - GUTTERSEN D11-29D

SECTIONS 2 & 11
TOWNSHIP 3 NORTH
RANGE 64 WEST



①

LF RANCH 2-2
SW/SW SEC. 2
983' FSL
990' FWL
EL 4702'
N 40.24985
W 104.52424
PDOP 1.9

②

GUTTERSEN
D02-20
NE/SW SEC. 2
2458' FSL
1429' FWL
EL 4703'
N 40.25390
W 104.52263
PDOP 1.9

③

TANIA BLUE
D2-11
NE/SW SEC. 2
2010' FSL
2127' FWL
EL 4705'
N 40.25267
W 104.52014
PDOP 1.9

④

TANIA BLUE
D2-14
SE/SW SEC. 2
536' FSL
2085' FWL
EL 4703'
N 40.24862
W 104.52033
PDOP 1.8

⑤

TWO E RANCH
2-11
NE/NW SEC. 11
646' FNL
1937' FWL
EL 4713'
N 40.24538
W 104.52087
PDOP 2.7

⑥

TWO E RANCH
1-11
NW/NW SEC. 11
564' FNL
635' FWL
EL 4724'
N 40.24561
W 104.52554
PDOP 1.8

NOTES:

- 1) THIS SKETCH DOES NOT REPRESENT A BOUNDARY SURVEY.
- 2) THE DATUM FOR THE LATITUDES AND LONGITUDES ON THIS SKETCH IS NAD83.



0 1000

Scale: 1" = 1000'