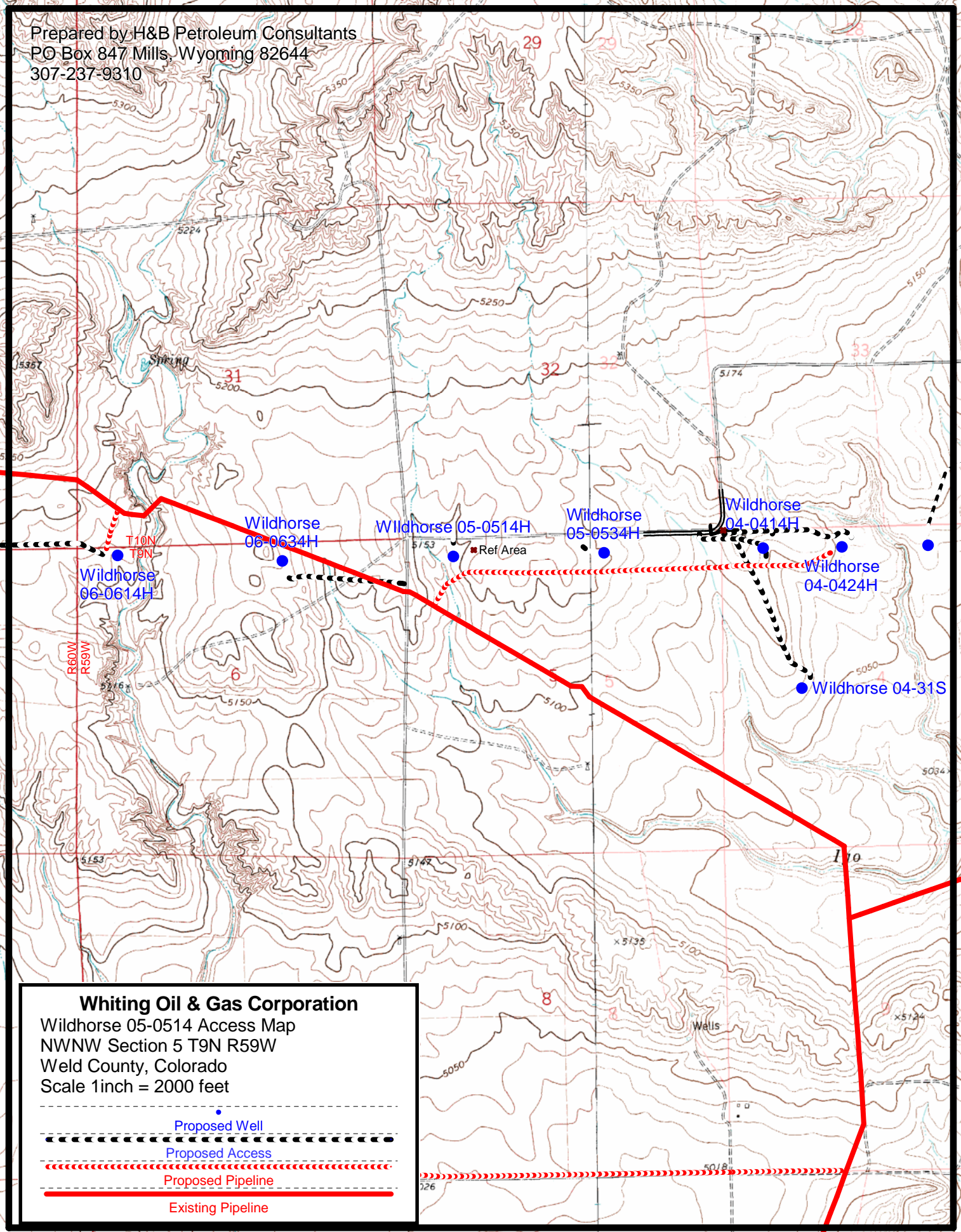


Prepared by H&B Petroleum Consultants
PO Box 847 Mills, Wyoming 82644
307-237-9310



Whiting Oil & Gas Corporation

Wildhorse 05-0514 Access Map
NWNW Section 5 T9N R59W
Weld County, Colorado
Scale 1 inch = 2000 feet

Proposed Well

Proposed Access

Proposed Pipeline

Existing Pipeline