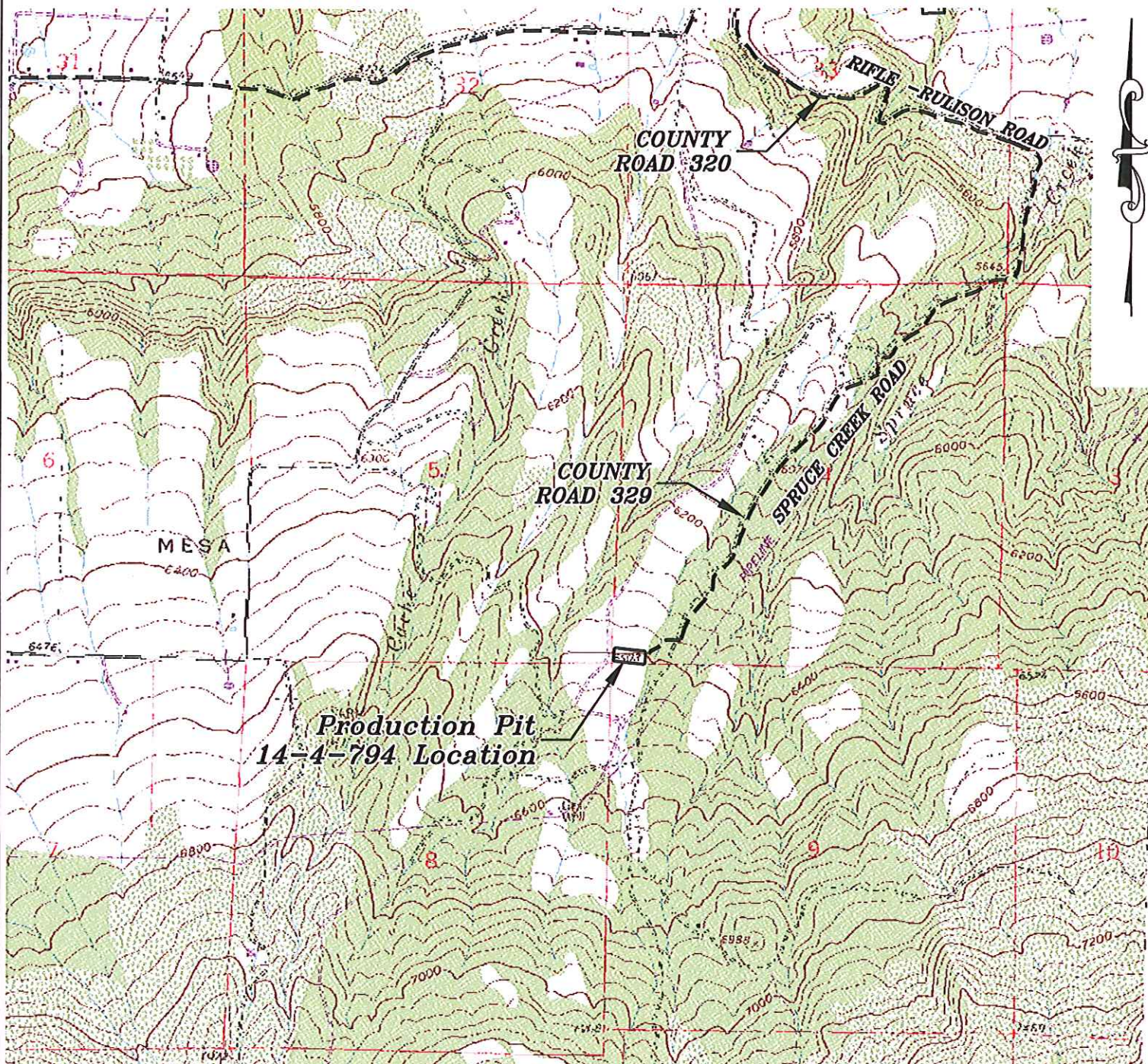


Section 14
T. 7 S, R 94 W



1000 0 2000
GRAPHIC SCALE IN FEET
1 INCH = 2000 FEET

ACCESS DESCRIPTION:

FROM THE INTERSECTION OF STATE HIGHWAY 6 AND COUNTY ROAD 323 (RULISON ROAD) NORTH OF RULISON, PROCEED SOUTHERLY ALONG COUNTY ROAD 323 (RULISON ROAD) ± 1.1 MILES TO THE INTERSECTION WITH COUNTY ROAD 309 (RULISON PARACHUTE ROAD), PROCEED LEFT IN AN EASTERLY DIRECTION ± 2.3 MILES TO THE INTERSECTION WITH COUNTY ROAD 320 (RIFLE RULISON ROAD), PROCEED RIGHT IN AN EASTERLY DIRECTION ± 1.0 MILES TO THE INTERSECTION WITH COUNTY ROAD 329 (SPRUCE CREEK ROAD), PROCEED RIGHT IN A SOUTHERLY DIRECTION ± 1.8 MILES TO AN INTERSECTION WITH A DIRT/GRAVEL ROAD, PROCEED RIGHT IN A WESTERLY DIRECTION TO THE 14-4-794 PRODUCTION PIT LOCATION, AS SHOWN HEREON.

Access map to road

Construction Plan Prepared for:
Williams Williams Production, RMT

Production Pit 14-4-794 - Plat 5
ACCESS ROAD MAP

SCALE: 1" = 2000'
DATE: 11/22/11
PLAT: 3 of 4
PROJECT: Williams Valley
DFT: cws

136 East Third Street
Rifle, Colorado 81650
Ph (970) 625-2720
Fax (970) 625-2773



BOOKCLIFF
Survey Services, Inc.