

T2N, R102W, 6th P.M.

CHEVRON U.S.A., INC.

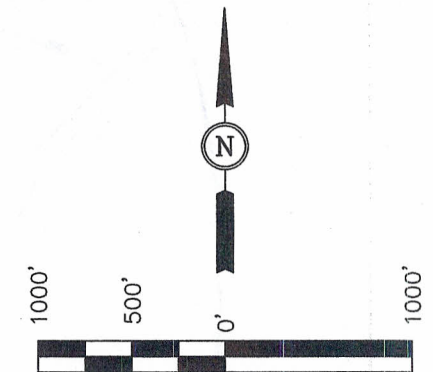
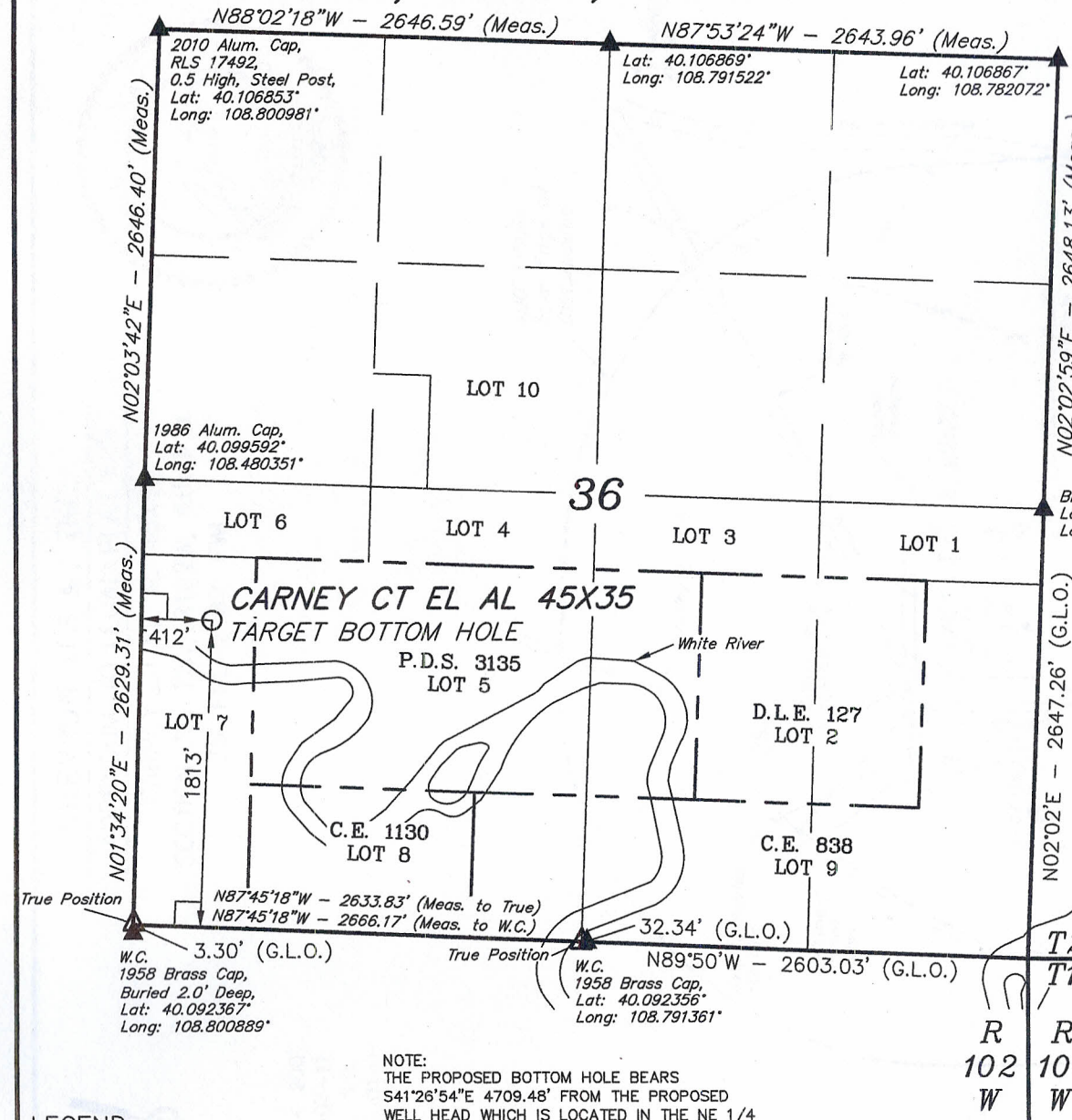
Well location, CARNEY CT EL AL 45X35 (Target Bottom Hole), located as shown in Lot 7 of Section 36, T2N, R102W, 6th P.M., Rio Blanco County, Colorado.

### BASIS OF ELEVATION

GOLF TRIANGULATION STATION LOCATED IN THE SE 1/4 OF SECTION 30, T2N, R102W, 6th P.M., TAKEN FROM THE BANTY POINT QUADRANGLE, COLORADO, RIO BLANCO COUNTY, 7.5 MINUTE QUAD. (TOPOGRAPHIC MAP) PUBLISHED BY THE UNITED STATES DEPARTMENT OF THE INTERIOR, GEOLOGICAL SURVEY. SAID ELEVATION IS MARKED AS BEING 5311 FEET.

### BASIS OF BEARINGS

BASIS OF BEARINGS IS A G.P.S. OBSERVATION.



SCALE  
CERTIFICATE

THIS IS TO CERTIFY THAT THE ABOVE PLAT WAS PREPARED FROM FIELD NOTES OF ACTUAL SURVEYS MADE BY ME OR UNDER MY SUPERVISION AND THAT THE SAME ARE TRUE AND CORRECT TO THE BEST OF MY KNOWLEDGE AND BELIEF.

REGISTERED LAND SURVEYOR  
REGISTRATION NO. 17492  
STATE OF COLORADO

REVISED: 09-01-11

**UINTAH ENGINEERING & LAND SURVEYING**  
85 SOUTH 200 EAST - VERNAL, UTAH 84078  
(435) 789-1017

SCALE 1" = 1000'	DATE SURVEYED: 12-08-10	DATE DRAWN: 02-07-11
PARTY J.F. K.P. S.B.	REFERENCES G.L.O. PLAT	
WEATHER COLD	FILE CHEVRON U.S.A., INC.	

### LEGEND:

- = 90° SYMBOL
- = PROPOSED WELL HEAD.
- ▲ = SECTION CORNERS LOCATED.
- △ = SECTION CORNERS RE-ESTABLISHED. (Not Set on Ground.)

NOTE:  
THE PROPOSED BOTTOM HOLE BEARS  
S41°26'54"E 4709.48' FROM THE PROPOSED  
WELL HEAD WHICH IS LOCATED IN THE NE 1/4  
NW 1/4 OF SECTION 35, T2N, R102W, 6th P.M.  
AT A DISTANCE OF 38' FNL 2487' FWL.