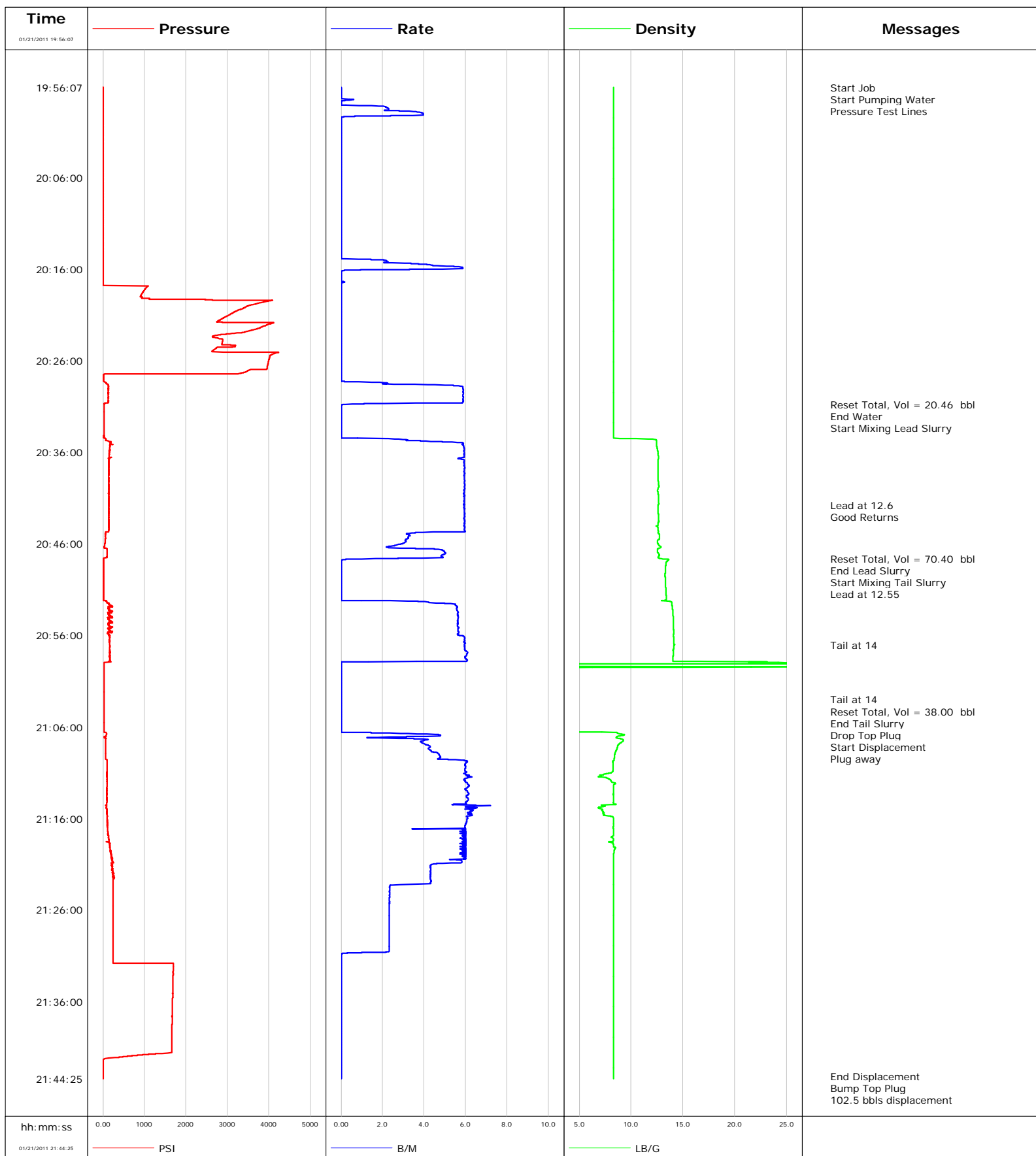


Well MF04A-16
Field North Parachute
Engineer Elyse Newman
Country United States

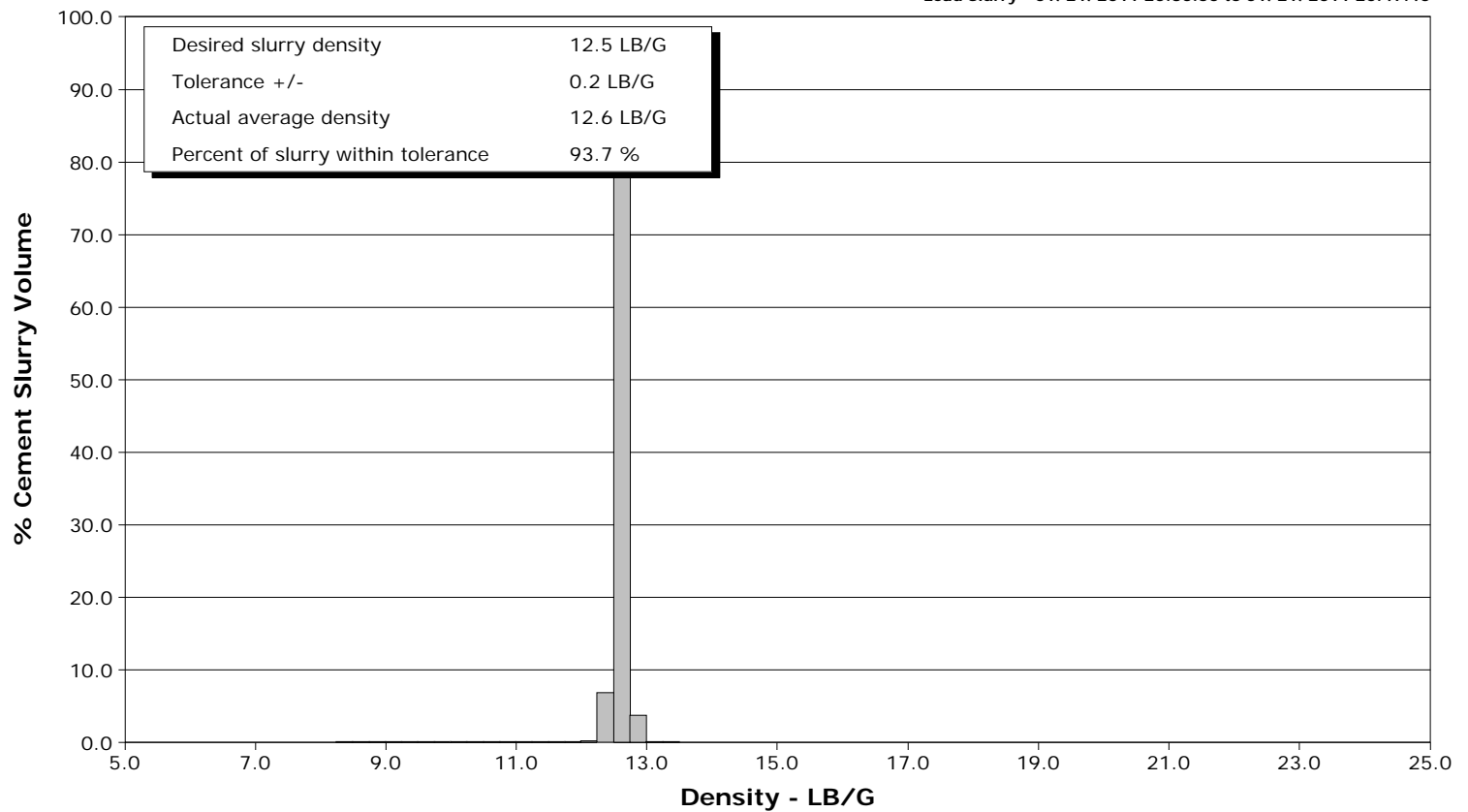
Client EnCana
SIR No. BAD4-00285
Job Type 9 5/8" Surface
Job Date 01-21-2011



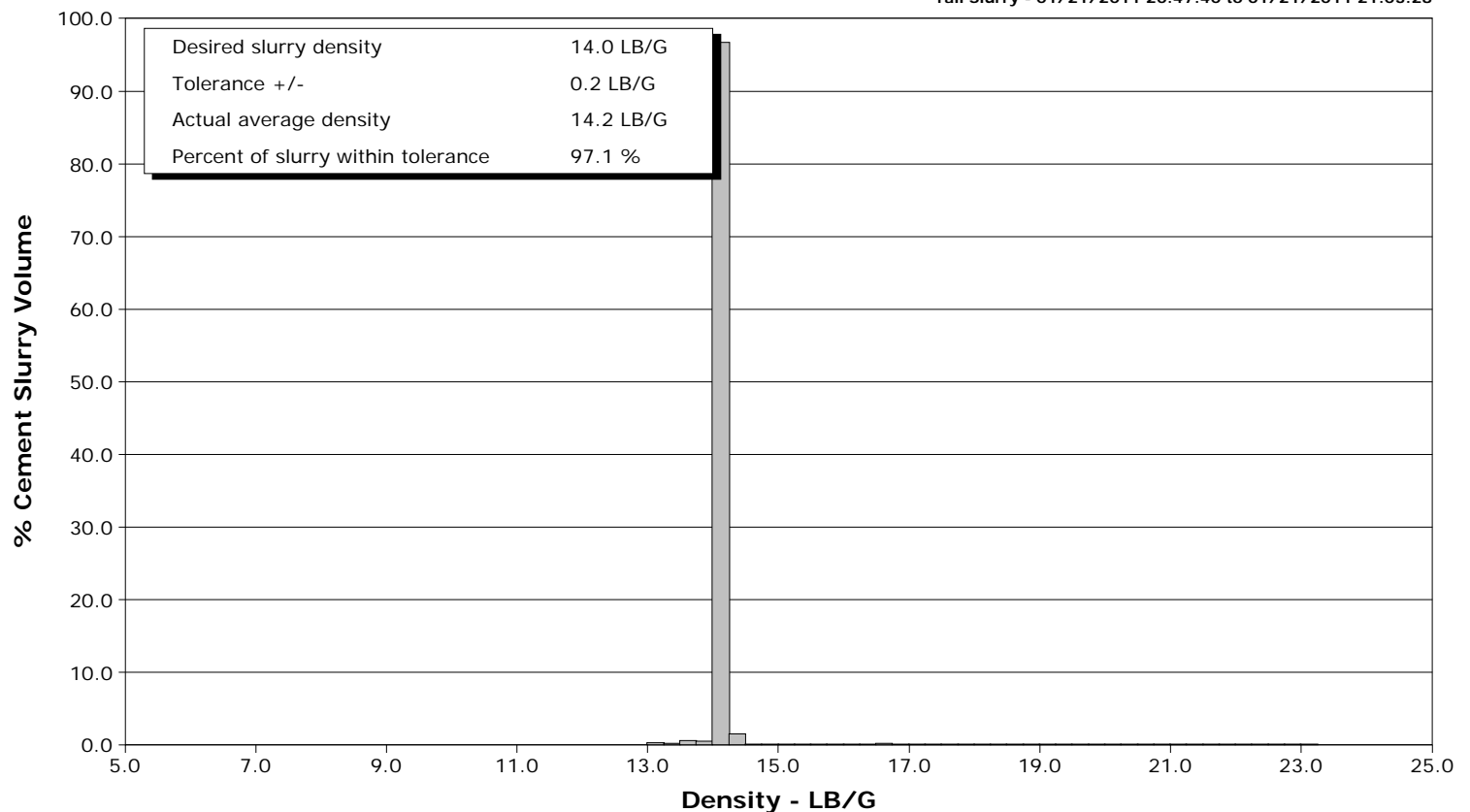
Well MF04A-16
Field North Parachute
Engineer Elyse Newman
Country United States

Client EnCana
SIR No. BAD4-00285
Job Type 9 5/8" Surface
Job Date 01-21-2011

Lead Slurry - 01/21/2011 20:30:50 to 01/21/2011 20:47:40



Tail Slurry - 01/21/2011 20:47:40 to 01/21/2011 21:03:28





Cementing Service Report

				Customer EnCana		Job Number BAD4-00285	
Well MF04A-16			Location (legal)		Schlumberger Location Rock Springs		Job Start Jan/21/2011
Field North Parachute		Formation Name/Type		Deviation	Bit Size	Well MD 1363.0 ft	Well TVD 1363.0 ft
County Garfield		State/Province Colorado		BHP	BHST 100 degF	BHCT 86 degF	Pore Press. Gradient
Well Master 0631240402		API/UWI 0504518692					
Rig Name Patterson 303		Drilled For Gas		Service Via Land		Casing/Liner	
				Depth, ft	Size, in	Weight, lb/ft	Grade
							Thread
Offshore Zone		Well Class New		Well Type Development			
				1363.0	9.630	36.0	J55
				0.0	0.000	0.0	8RD
Drilling Fluid Type		Max. Density		Plastic Viscosity		Tubing/Drill Pipe	
Service Line Cementing		Job Type 9 5/8" Surface					
Max. Allowed Tub. Press		Max. Allowed Ann. Press		WH Connection Single Cement head		Perforations/Open Hole	
Service Instructions Provide services and equipment to cement 9 5/8" surface casing				Top,		Bottom,	
				Treat Down Casing		Displacement 103.0 bbl	
				Packer Type		Packer Depth	
				Tubing Vol.		Casing Vol.	
				Annular Vol.		Openhole Vol.	
Casing/Tubing Secured <input checked="" type="checkbox"/>		1 Hole Vol. Circulated prior to Cement <input checked="" type="checkbox"/>		Casing Tools		Squeeze Job	
Lift Pressure		Shoe Type Float		Squeeze Type			
Pipe Rotated <input type="checkbox"/>		Pipe Reciprocated <input type="checkbox"/>		Shoe Depth 1363.0 ft		Tool Type	
No. Centralizers 21		Top Plugs 1		Bottom Plugs		Stage Tool Type	
						Tool Depth	
Cement Head Type		Stage Tool Depth		Tail Pipe Size			
Job Scheduled For Jan/21/2011 01:00		Arrived on Location Jan/21/2011 01:00		Leave Location Jan/21/2011 23:00		Collar Type Float	
						Tail Pipe Depth	
						Sqz. Total Vol.	
Date	Time 24-hr clock	Treating Pressure PSI	Flow Rate B/M	Density LB/G	Volume BBL	Message	
01/21/2011	19:13:51					Started Acquisition	
01/21/2011	19:56:07	-0	0.0	8.32	0.0		
01/21/2011	19:56:08					Start Job	
01/21/2011	19:56:08	-0	0.0	8.32	0.0		
01/21/2011	19:56:11					Start Pumping Water	
01/21/2011	19:56:11	0	0.0	8.32	0.0		
01/21/2011	19:56:13					Pressure Test Lines	
01/21/2011	19:56:13	0	0.0	8.32	0.0		
01/21/2011	19:56:21	0	0.0	8.32	0.0		
01/21/2011	19:58:51	0	3.8	8.30	1.8		
01/21/2011	20:01:21	0	0.0	8.30	3.5		
01/21/2011	20:03:51	0	0.0	8.30	3.5		
01/21/2011	20:06:21	0	0.0	8.30	3.5		
01/21/2011	20:08:51	0	0.0	8.30	3.5		
01/21/2011	20:11:21	-0	0.0	8.31	3.5		
01/21/2011	20:13:51	0	0.0	8.31	3.5		
01/21/2011	20:16:21	0	0.0	8.30	7.8		
01/21/2011	20:18:51	919	0.0	8.30	7.8		
01/21/2011	20:21:21	2898	0.0	8.30	7.8		
01/21/2011	20:23:51	2883	0.0	8.30	7.8		
01/21/2011	20:26:21	3977	0.0	8.30	7.8		

Well			Field	Job Start		Customer	Job Number
MF04A-16			North Parachute	Jan/21/2011		EnCana	BAD4-00285
Date	Time 24-hr clock	Treating Pressure PSI	Flow Rate B/M	Density LB/G	Volume BBL	Message	
01/21/2011	20:30:47					Reset Total, Vol = 20.46 bbl	
01/21/2011	20:30:47	35	0.2	8.30	20.5		
01/21/2011	20:30:49					End Water	
01/21/2011	20:30:49	34	0.0	8.29	20.5		
01/21/2011	20:30:50					Start Mixing Lead Slurry	
01/21/2011	20:30:50	33	0.0	8.29	20.5		
01/21/2011	20:31:21	28	0.0	8.29	20.5		
01/21/2011	20:33:51	24	0.0	8.29	20.5		
01/21/2011	20:36:21	146	5.9	12.62	30.5		
01/21/2011	20:38:51	143	5.9	12.58	45.3		
01/21/2011	20:41:21	139	5.9	12.65	60.2		
01/21/2011	20:41:46					Lead at 12.6	
01/21/2011	20:41:46	148	5.9	12.61	62.6		
01/21/2011	20:41:58					Good Returns	
01/21/2011	20:41:58	142	5.9	12.59	63.8		
01/21/2011	20:43:51	142	5.9	12.60	75.0		
01/21/2011	20:46:21	35	2.2	12.88	85.2		
01/21/2011	20:47:38					Reset Total, Vol = 70.40 bbl	
01/21/2011	20:47:38	19	1.7	12.89	90.9		
01/21/2011	20:47:40					End Lead Slurry	
01/21/2011	20:47:40					Start Mixing Tail Slurry	
01/21/2011	20:47:40	15	0.5	13.42	90.9		
01/21/2011	20:48:51	17	0.0	13.30	90.9		
01/21/2011	20:50:06					Lead at 12.55	
01/21/2011	20:50:06	18	0.0	13.30	90.9		
01/21/2011	20:51:21	17	0.0	13.36	90.9		
01/21/2011	20:53:51	179	5.6	14.05	99.6		
01/21/2011	20:56:21	160	6.0	14.12	113.8		
01/21/2011	20:57:05					Tail at 14	
01/21/2011	20:57:05	165	5.9	14.16	118.1		
01/21/2011	20:58:51	181	3.6	16.60	128.7		
01/21/2011	21:01:21	25	0.0	0.10	128.9		
01/21/2011	21:03:00					Tail at 14	
01/21/2011	21:03:00	25	0.0	0.09	128.9		
01/21/2011	21:03:07					Reset Total, Vol = 38.00 bbl	
01/21/2011	21:03:07	25	0.0	0.08	128.9		
01/21/2011	21:03:28					End Tail Slurry	
01/21/2011	21:03:28	26	0.0	0.08	128.9		
01/21/2011	21:03:32					Drop Top Plug	
01/21/2011	21:03:32	25	0.0	0.08	128.9		
01/21/2011	21:03:37					Start Displacement	
01/21/2011	21:03:37	25	0.0	0.08	128.9		
01/21/2011	21:03:40					Plug away	
01/21/2011	21:03:40	25	0.0	0.08	128.9		
01/21/2011	21:03:51	26	0.0	0.08	128.9		
01/21/2011	21:06:21	25	0.0	0.08	128.9		
01/21/2011	21:08:51	67	4.6	8.46	137.5		
01/21/2011	21:11:21	90	6.1	7.09	151.6		
01/21/2011	21:13:51	96	6.1	8.29	166.8		
01/21/2011	21:16:21	101	6.1	8.31	182.2		
01/21/2011	21:18:51	165	6.0	8.29	197.1		
01/21/2011	21:21:21	218	4.3	8.29	211.1		
01/21/2011	21:23:51	247	2.3	8.29	220.6		
01/21/2011	21:26:21	247	2.3	8.29	226.5		

Well			Field		Job Start	Customer	Job Number
MFO4A-16			North Parachute		Jan/21/2011	EnCana	BAD4-00285
Date	Time 24-hr clock	Treating Pressure PSI	Flow Rate B/M	Density LB/G	Volume BBL	Message	
01/21/2011	21:31:21	247	0.0	8.29	236.5		
01/21/2011	21:33:51	1686	0.0	8.29	236.5		
01/21/2011	21:36:21	1676	0.0	8.30	236.5		
01/21/2011	21:38:51	1661	0.0	8.30	236.5		
01/21/2011	21:41:21	1659	0.0	8.30	236.5		
01/21/2011	21:43:51	1	0.0	8.30	236.5		
01/21/2011	21:44:12					End Displacement	
01/21/2011	21:44:12	1	0.0	8.30	236.5		
01/21/2011	21:44:13					Bump Top Plug	
01/21/2011	21:44:13	1	0.0	8.30	236.5		
01/21/2011	21:44:14					102.5 bbls displacement	
01/21/2011	21:44:14	1	0.0	8.30	236.5		
01/21/2011	21:44:15					0.5 bbls back, floats holding	
01/21/2011	21:44:15	1	0.0	8.30	236.5		

Post Job Summary

Average Pump Rates,					Volume of Fluid Injected, bbl			
Slurry	N2	Mud	Maximum Rate	Total Slurry 108.4	Mud	Spacer	N2	
Treating Pressure Summary,					Breakdown Fluid			
Maximum	Final	Average	Bump Plug to	Breakdown	Type	Volume	Density	
Avg. N2 Percent	Designed Slurry Volume 110.0 bbl		Displacement	Mix Water Temp 72 degF	Cement Circulated to Surface?	<input type="checkbox"/>	Volume	
					Washed Thru Perfs	<input type="checkbox"/>	To	
Customer or Authorized Representative Ed Asuchak			Schlumberger Supervisor Elyse Newman			Circulation Lost	<input type="checkbox"/>	
					Job Completed <input checked="" type="checkbox"/>			