

T2N, R102W, 6th P.M.

T2N, R102W, 6th P.M.

CHEVRON U.S.A., INC.

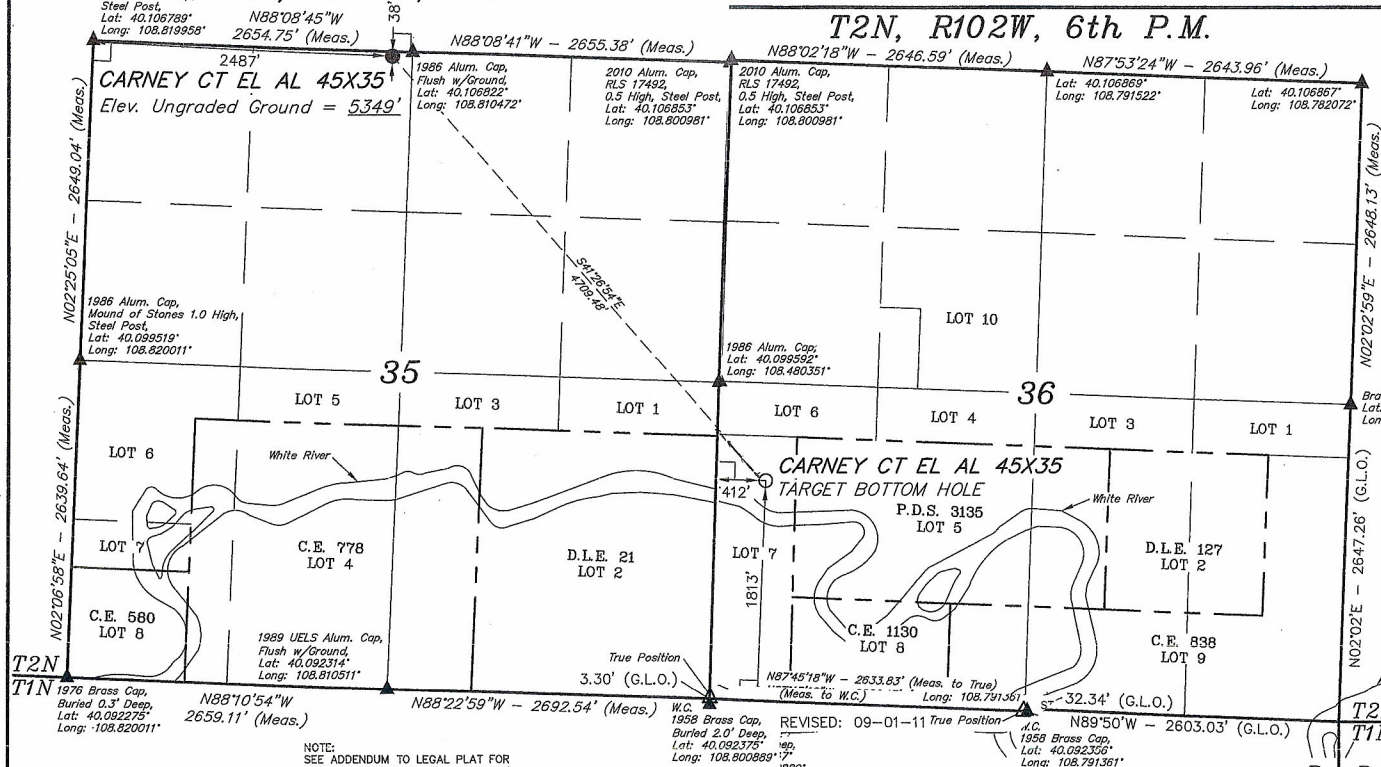
Well location, CARNEY CT EL AL 45X35 (Target Bottom Hole), located as shown in Lot 7 of Section 36, T2N, R102W, 6th P.M., Rio Blanco County, Colorado.

BASIS OF ELEVATION

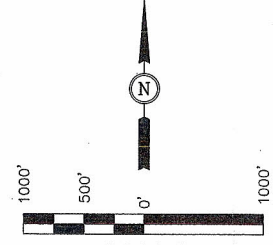
GOLF TRIANGULATION STATION LOCATED IN THE SE 1/4 OF SECTION 30, T2N, R102W, 6th P.M., TAKEN FROM THE BANTY POINT QUADRANGLE, COLORADO, RIO BLANCO COUNTY, 7.5 MINUTE QUAD. (TOPOGRAPHIC MAP) PUBLISHED BY THE UNITED STATES DEPARTMENT OF THE INTERIOR, GEOLOGICAL SURVEY. SAID ELEVATION IS MARKED AS BEING 5311 FEET.

BASIS OF BEARINGS

BASIS OF BEARINGS IS A G.P.S. OBSERVATION.



Brass Cap,  
Lot: 40.099600'  
Long: 108.782067'



SCALE CERTIFICATE

THIS IS TO CERTIFY THAT THE ABOVE PLAT WAS PREPARED FROM FIELD NOTES OF ACTUAL SURVEYS MADE BY ME OR UNDER MY SUPERVISION AND THAT THE SAME ARE TRUE AND CORRECT TO THE BEST OF MY KNOWLEDGE AND BELIEF.

REGISTERED LAND SURVEYOR  
STATE OF COLORADO  
09-01-11

REVISED: 09-01-11

UINTAH ENGINEERING & LAND SURVEYING  
85 SOUTH 200 EAST - VERNAL, UTAH 84078  
(435) 789-1017

SCALE 1" = 1000'	DATE SURVEYED: 12-08-10	DATE DRAWN: 02-07-11
PARTY J.F. K.P. S.B.	REFERENCES G.L.O. PLAT	
WEATHER COLD	FILE CHEVRON U.S.A., INC.	

LEGEND:

- └─┘ = 90° SYMBOL
- = PROPOSED WELL HEAD.
- ▲ = SECTION CORNERS LOCATED.
- △ = SECTION CORNERS RE-ESTABLISHED. (Not Set on Ground.)

NOTE:  
SEE ADDENDUM TO LEGAL PLAT FOR EXISTING IMPROVEMENTS WITHIN 400' OF THE PROPOSED WELL DISTURBANCE.

NOTE:  
THE PROPOSED BOTTOM HOLE FOR THIS WELL IS LOCATED IN LOT 7 OF SECTION 36, T2N, R102W, 6th P.M. AT A DISTANCE OF 1813' FSL 412' FWL. IT BEARS S41°26'54"E 4709.48' FROM THE PROPOSED WELL HEAD.

PDOP = 1.8	
NAD 83 (SURFACE LOCATION)	
LATITUDE = 40°06'24.18"	(40.106717)
LONGITUDE = 108°48'39.85"	(108.811069)
NAD 27 (SURFACE LOCATION)	
LATITUDE = 40°06'24.27"	(40.106742)
LONGITUDE = 108°48'37.46"	(108.810406)

NOTE:  
THE PROPOSED BOTTOM HOLE BEARS S41°26'54"E 4709.48' FROM THE PROPOSED WELL HEAD WHICH IS LOCATED IN THE NE 1/4 NW 1/4 OF SECTION 35, T2N, R102W, 6th P.M. AT A DISTANCE OF 38' FNL 2487' FWL.

NAD 83 (TARGET BOTTOM HOLE)	
LATITUDE = 40°05'50.46"	(40.097350)
LONGITUDE = 108°47'58.11"	(108.799475)
NAD 27 (TARGET BOTTOM HOLE)	
LATITUDE = 40°05'50.55"	(40.097376)
LONGITUDE = 108°47'55.73"	(108.798814)