

1986 Alum. Cap,
Buried 1.0' Deep,
Steel Post,
Lat: 40.106789°
Long: 108.819958°

T2N, R102W, 6th P.M.

N88°08'45"W

2654.75' (Meas.)

N88°08'41"W - 2655.38' (Meas.)

CARNEY CT EL AL 45X35

Elev. Ungraded Ground = 5349'

1986 Alum. Cap,
Flush w/Ground,
Lat: 40.106822°
Long: 108.810472°

2010 Alum. Cap,
RLS 17492,
0.5 High, Steel Post,
Lat: 40.106853°
Long: 108.800981°

CHEVRON U.S.A., INC.

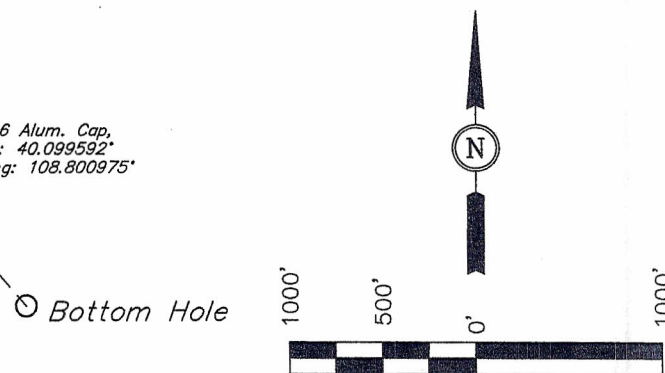
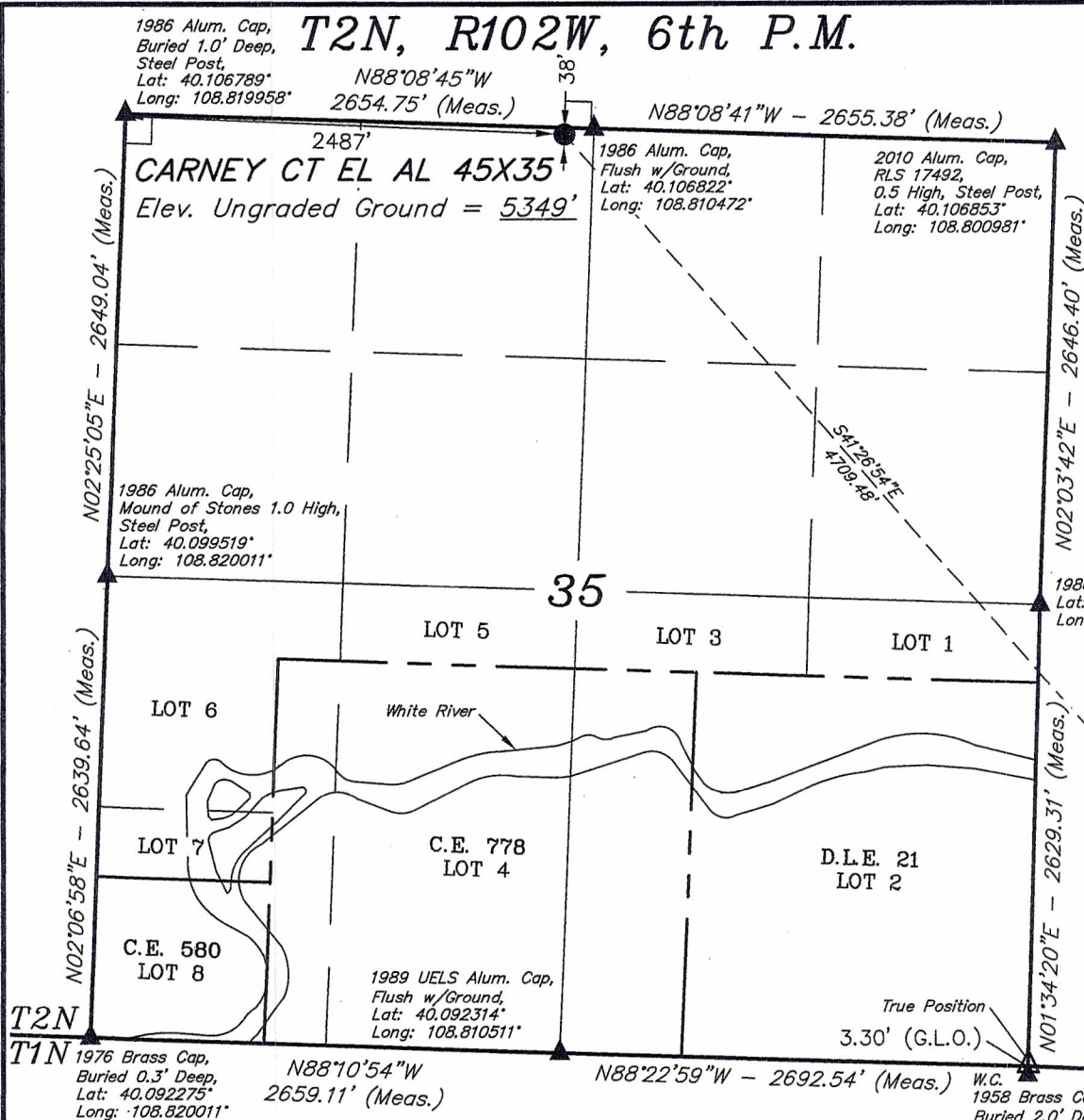
Well location, CARNEY CT EL AL 45X35 (Surface Location), located as shown in the NE 1/4 NW 1/4 of Section 35, T2N, R102W, 6th P.M., Rio Blanco County, Colorado.

BASIS OF ELEVATION

GOLF TRIANGULATION STATION LOCATED IN THE SE 1/4 OF SECTION 30, T2N, R102W, 6th P.M., TAKEN FROM THE BANTY POINT QUADRANGLE, COLORADO, RIO BLANCO COUNTY, 7.5 MINUTE QUAD. (TOPOGRAPHIC MAP) PUBLISHED BY THE UNITED STATES DEPARTMENT OF THE INTERIOR, GEOLOGICAL SURVEY. SAID ELEVATION IS MARKED AS BEING 5311 FEET.

BASIS OF BEARINGS

BASIS OF BEARINGS IS A G.P.S. OBSERVATION.



**SCALE
CERTIFICATE**

THIS IS TO CERTIFY THAT THE ABOVE PLAT WAS PREPARED FROM FIELD NOTES OF ACTUAL SURVEYS MADE BY ME OR UNDER MY SUPERVISION AND THAT THE SAME ARE TRUE AND CORRECT TO THE BEST OF MY KNOWLEDGE AND BELIEF.

N87°45'18"W - 2633.83'
(Meas. to True)
N87°45'18"W - 2666.17'
(Meas. to W.C.)

W.C.
1958 Brass Cap,
Lat: 40.092356°
Long: 108.791361°

REGISTERED LAND SURVEYOR
REGISTRATION NO. 7492
STATE OF COLORADO
09-01-11

REVISED: 09-01-11 True Position

UINTAH ENGINEERING & LAND SURVEYING

85 SOUTH 200 EAST - VERNAL, UTAH 84078

(435) 789-1017

NOTE:
SEE ADDENDUM TO LEGAL PLAT FOR
EXISTING IMPROVEMENTS WITHIN 400'
OF THE PROPOSED WELL DISTURBANCE.

NOTE:
THE PROPOSED BOTTOM HOLE FOR
THIS WELL IS LOCATED IN LOT 7 OF
SECTION 36, T2N, R102W, 6th P.M.
AT A DISTANCE OF 1813' FSL 412'
FWL IT BEARS S41°26'54"E 4709.48'
FROM THE PROPOSED WELL HEAD.

PDOP = 1.8

NAD 83 (SURFACE LOCATION)
LATITUDE = 40°06'24.18" (40.106717)
LONGITUDE = 108°48'39.85" (108.811069)
NAD 27 (SURFACE LOCATION)
LATITUDE = 40°06'24.27" (40.106742)
LONGITUDE = 108°48'37.46" (108.810406)

SCALE
1" = 1000'

PARTY
J.F. K.P. S.B.

WEATHER
COLD

DATE SURVEYED: 12-08-10
DATE DRAWN: 02-07-11

REFERENCES
G.L.O. PLAT

FILE
CHEVRON U.S.A., INC.

LEGEND:

└─┘ = 90° SYMBOL

● = PROPOSED WELL HEAD.

▲ = SECTION CORNERS LOCATED.

△ = SECTION CORNERS RE-ESTABLISHED. (Not Set on Ground.)