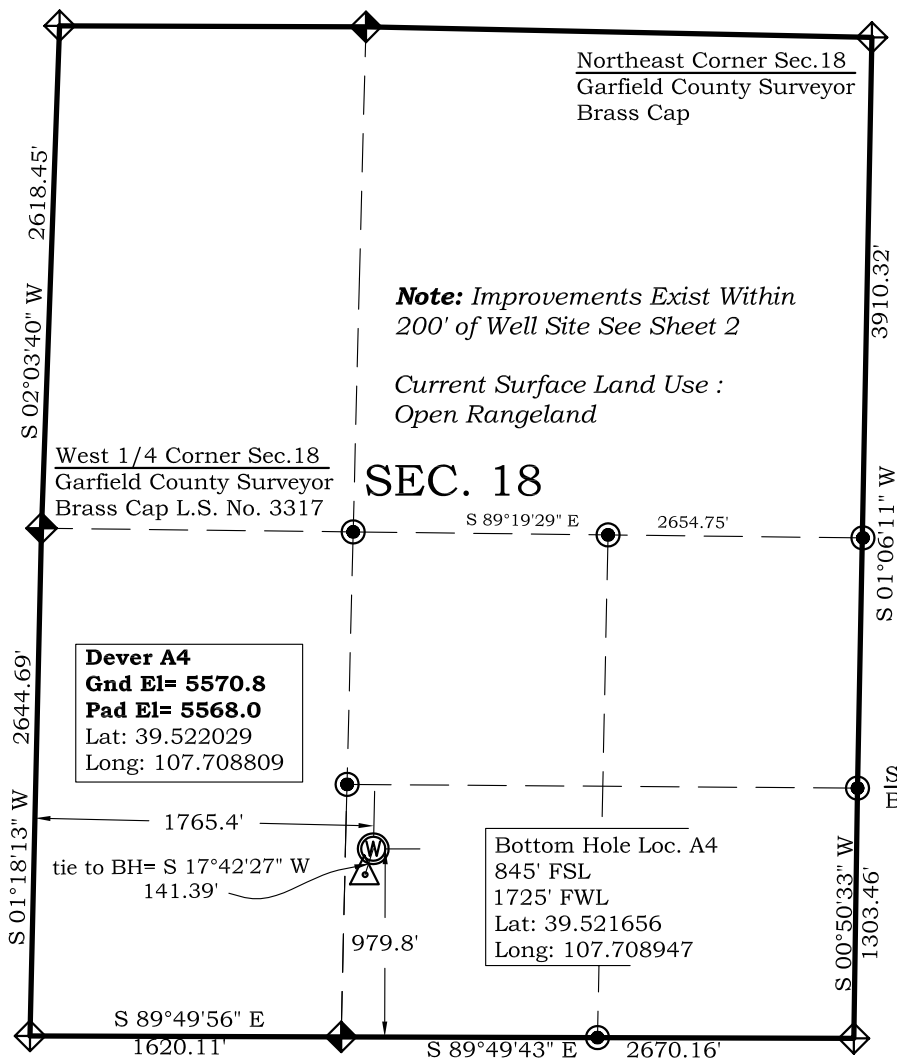


Northwest Corner Sec. 18  
Aluminum Cap L.S. No. 28862

North 1/4 Corner Sec. 18  
Brass Cap L.S. No. 15846

## Well Location Plat Dever Well A4



Southwest Corner Sec. 18  
Stone in Place

South 1/4 Corner Sec.18  
Garfield County Surveyor  
Brass Cap L.S. No.14111

Southeast Corner Sec.18  
Aluminum Cap L.S. No.  
31944

Prepared For Antero Resources  
Proposed Dever A4 Well Situate in The SE1/4 Section 18,  
Township 6 South, Range 92 West of the 6 th. Principal  
Meridian, County of Garfield, State of Colorado

### SURVEYOR'S CERTIFICATE

I, SCOTT E. AIBNER, A REGISTERED LAND SURVEYOR, LICENSED UNDER THE LAWS OF THE STATE OF COLORADO DO HEREBY CERTIFY THAT THE SURVEY SHOWN HEREON WAS PREPARED BY RIVER VALLEY SURVEY, INC., FOR ANTERO RESOURCES, BY ME OR UNDER MY DIRECT SUPERVISION AND THAT THIS PLAT IS A TRUE REPRESENTATION THEREOF.



BY:  
SCOTT E. AIBNER, COLORADO REG. NO. 31143

### Notes:

- 1.) LATITUDE AND LONGITUDE COORDINATES ARE DIFFERENTIALLY CORRECTED AND BASED ON PUBLISHED NGS CONTROL STATION "WDP-5".  
SYSTEM: UTM ZONE: 13 NORTH DATUM: NAD 1983 (CONUS)
- 2.) ELEVATIONS ARE BASED ON NAVD OF 1929.
- 3.) ALL BOTTOM AND TOP HOLE LOCATIONS ARE MEASURED 90 DEGREES FROM SECTION LINE.
- 4.) USGS QUADRANGLE MAP "SILT CO".
- 5.) CURRENT SURFACE LAND USE: OPEN RANGELAND
- 6.) PDOP AT THE TIME OF LOCATION OF SURFACE WELL = 1.8
- 7.) BOTTOM HOLE DISTANCE TO NEAREST LEASE LINE IS 109.1'



**River Valley Survey, Inc.**  
110 East 3rd. Street, Suite 207  
Rifle, Colorado 81650  
Ph: 970-379-7846

Project: Dever A Pad

Proj. No. 06001-03

Field Date: 01/25/06

Scale: 1"= 1000'

Date: 03-29-07

Sheet: 1 of 7

**Well Location Plat  
Prepared For Antero Resources**

**Situate In:**  
SE1/4 Section 18, T6S., R. 92 W. of the  
6th P.M., Garfield County, Colorado

