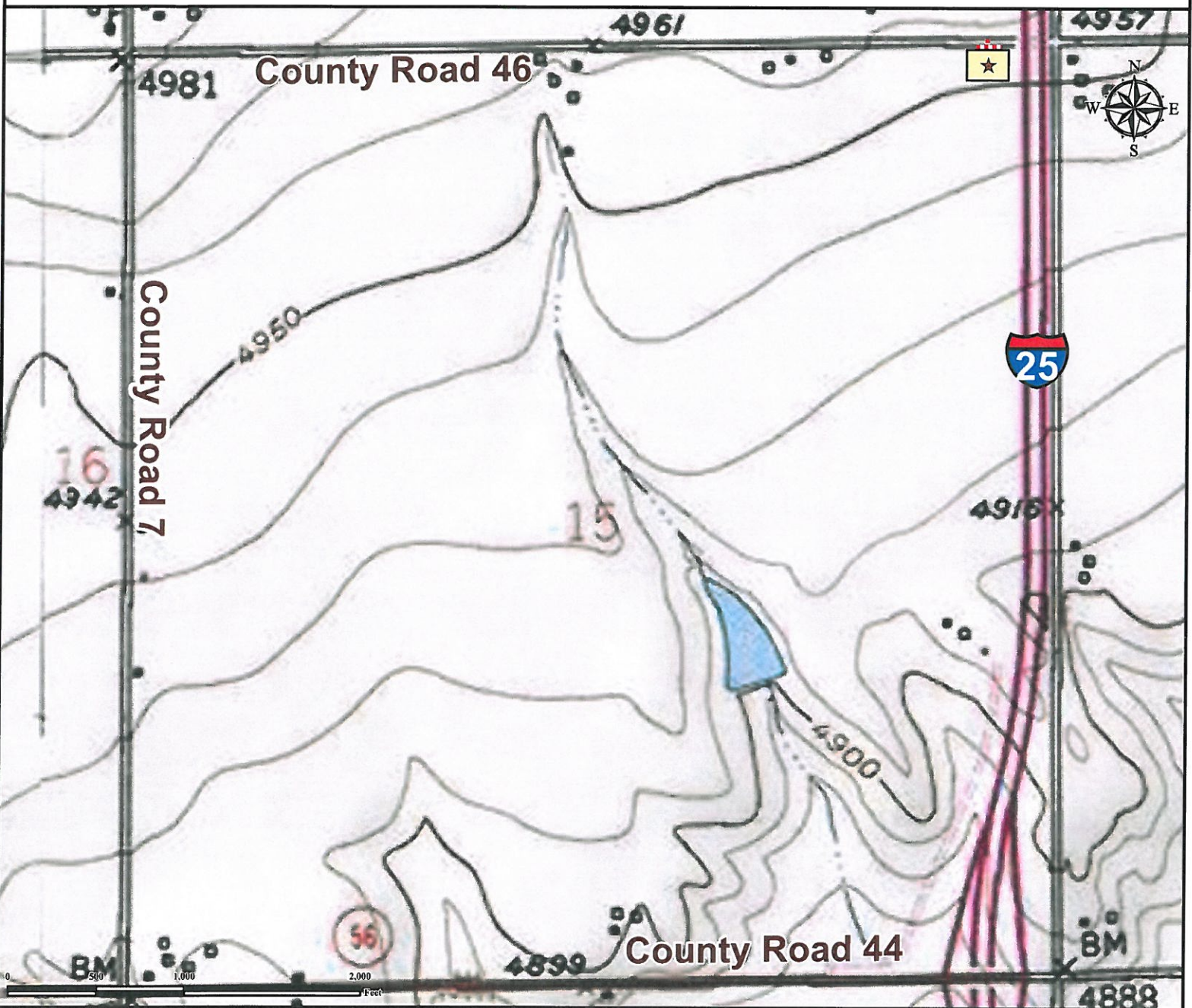


Access Road Map

LAMB 42-15

Facility

NE¼ NE¼ SECTION 15, TOWNSHIP 4 NORTH, RANGE 68 WEST OF THE 6TH PRINCIPAL MERIDIAN



From Johnstown, CO: From the intersection of Interstate 25 and CO Highway 60, Proceed South on I-25 Frontage Road ±1.0 mile.
 Turn Right onto County Road 26 and proceed west for ±0.1 mile to proposed access road.
 Turn Right onto proposed access road and drive south ±0.01 mile.

Total distance from the intersection of Interstate 25 and CO Highway 60 to proposed facility is ±1.11 miles.

Legend

- Proposed Facility
- Proposed Access Road

*** Size of Facility has been exaggerated to be clearly visible at this scale***

Reference Location

** All Measurements are Made from
 ★ Reference Point **
 Lat: 40.320603° Long: -104.981156° (NAD83)
 Elevation: 4954 Feet
 FNL: 105' FEL: 381'



Use our resources to find yours!
www.petro-fs.com
 (303) 928-7128

Field Date: 11/16/2011
 Drafting Date: 12/28/2011
 Drafter: HMB
 Checked By: BHF

Data Sources:
 - TOPO courtesy of USGS

Prepared for:

