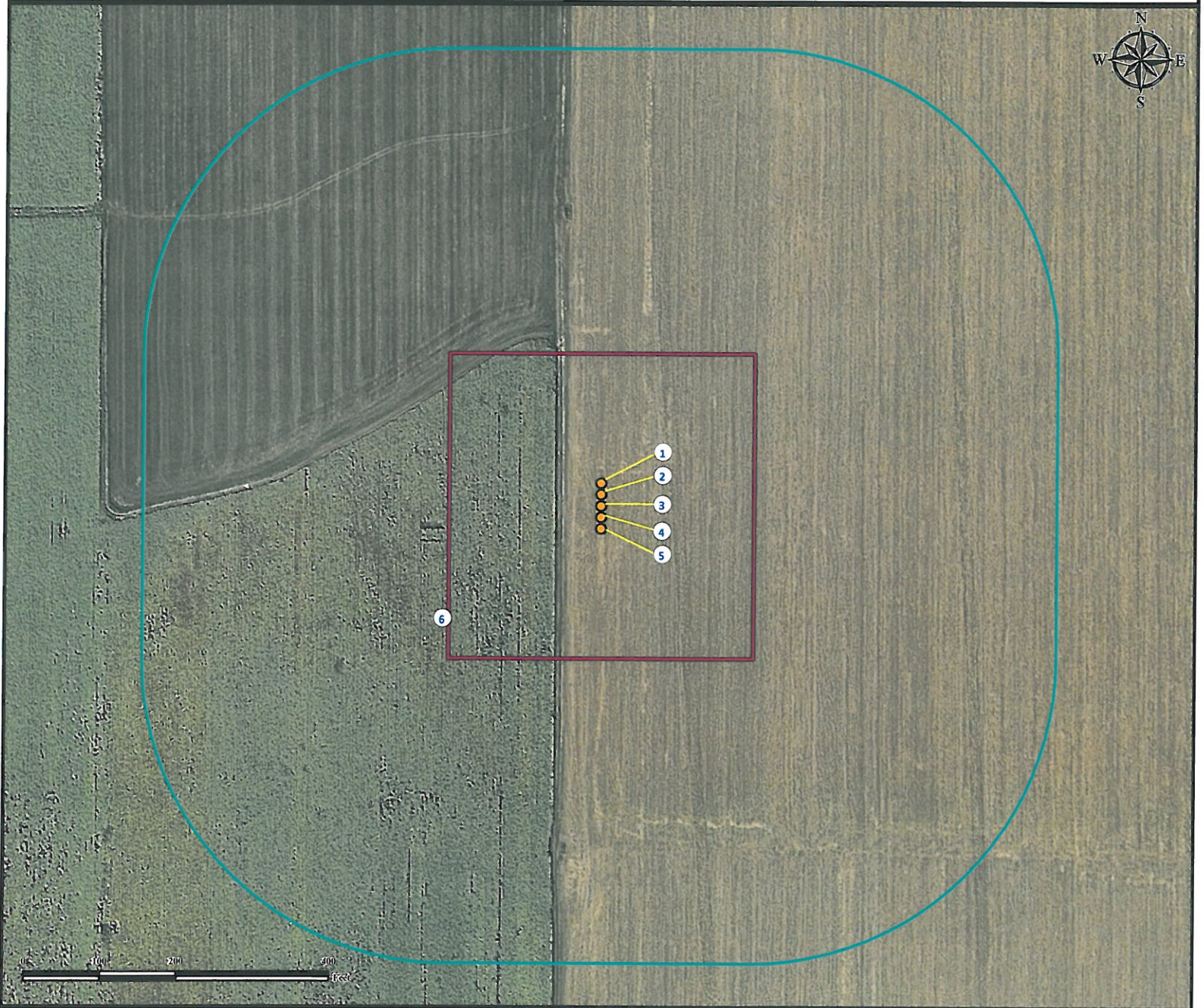


# Location Drawing

## LAMB 42-15

### Multi Well Pad

NE¼ NE¼ SECTION 15, TOWNSHIP 4 NORTH, RANGE 68 WEST OF THE 6TH PRINCIPAL MERIDIAN



- 1. Proposed well LAMB 41-15.
- 2. Proposed well LAMB 31-15.
- 3. Proposed well LAMB 42-15.
- 4. Proposed well LAMB 32-15.
- 5. Proposed well LAMB 15C.

6. Operational disturbance area.

There are no visible improvements within a 400' radius of the disturbance area of the proposed oil and gas location.

#### Legend

-  Proposed Well
-  Disturbance Area
-  400' Radius

#### Reference Location

\*\* All Measurements are Made from Reference Well LAMB 42-15 \*\*

Lat: 40.317314° Long:-104.984496° (NAD83)  
Elevation: 4941 Feet

Surface Use: Irrigated Crop



Use our resources to find yours!  
[www.petro-fs.com](http://www.petro-fs.com)  
(303) 928-7128

Field Date: 11/16/2011  
Drafting Date: 11/22/2011  
Drafter: DMM  
Checked By: BHF

Data Sources:  
- Aerial courtesy of NAIP (2009)

Prepared for:

