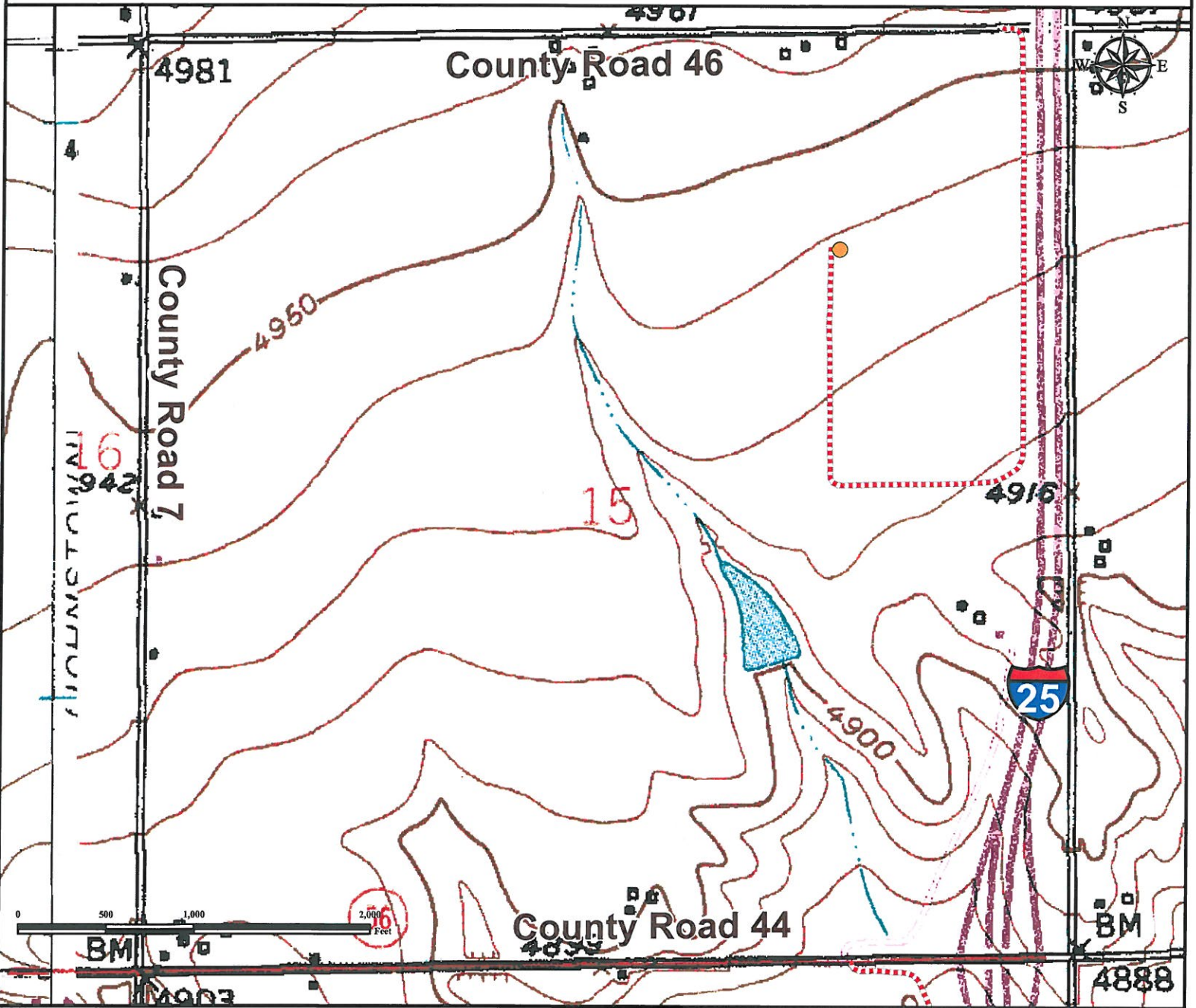


Access Road Map

L A M B 4 2 - 1 5

NE¼ NE¼ SECTION 15, TOWNSHIP 4 NORTH, RANGE 68 WEST OF THE 6TH PRINCIPAL MERIDIAN



From the intersection of Interstate 25 and CO Highway 60: Proceed south on I-25 Frontage road ±1.0 miles to County road 46.
Turn Right and proceed West ±0.1 miles to proposed access road.
Turn Left and proceed south ±0.5 miles.
Turn Right and proceed west ±0.2 miles.
Turn Right and proceed north ±0.25 miles to proposed well location.

Total distance from the intersection of Interstate 25 and CO Highway 60 to proposed well location is ±2.05 miles.

<p>Legend</p> <p>● Proposed Well Proposed Access Road</p>	<p style="text-align: center;">Reference Location</p> <p style="text-align: center;">** All Measurements are Made from Reference Well LAMB 42-15 **</p> <p style="text-align: center;">Lat: 40.317314° Long:-104.984496° (NAD83) Elevation: 4941 Feet</p>
---	--

Use our resources to find yours!
www.petro-fs.com
 (303) 928-7128

Field Date: 11/16/2011
 Drafting Date: 11/22/2011
 Drafter: DMM
 Checked By: BHF

Data Sources:
 - TOPO courtesy of USGS

Prepared for:

