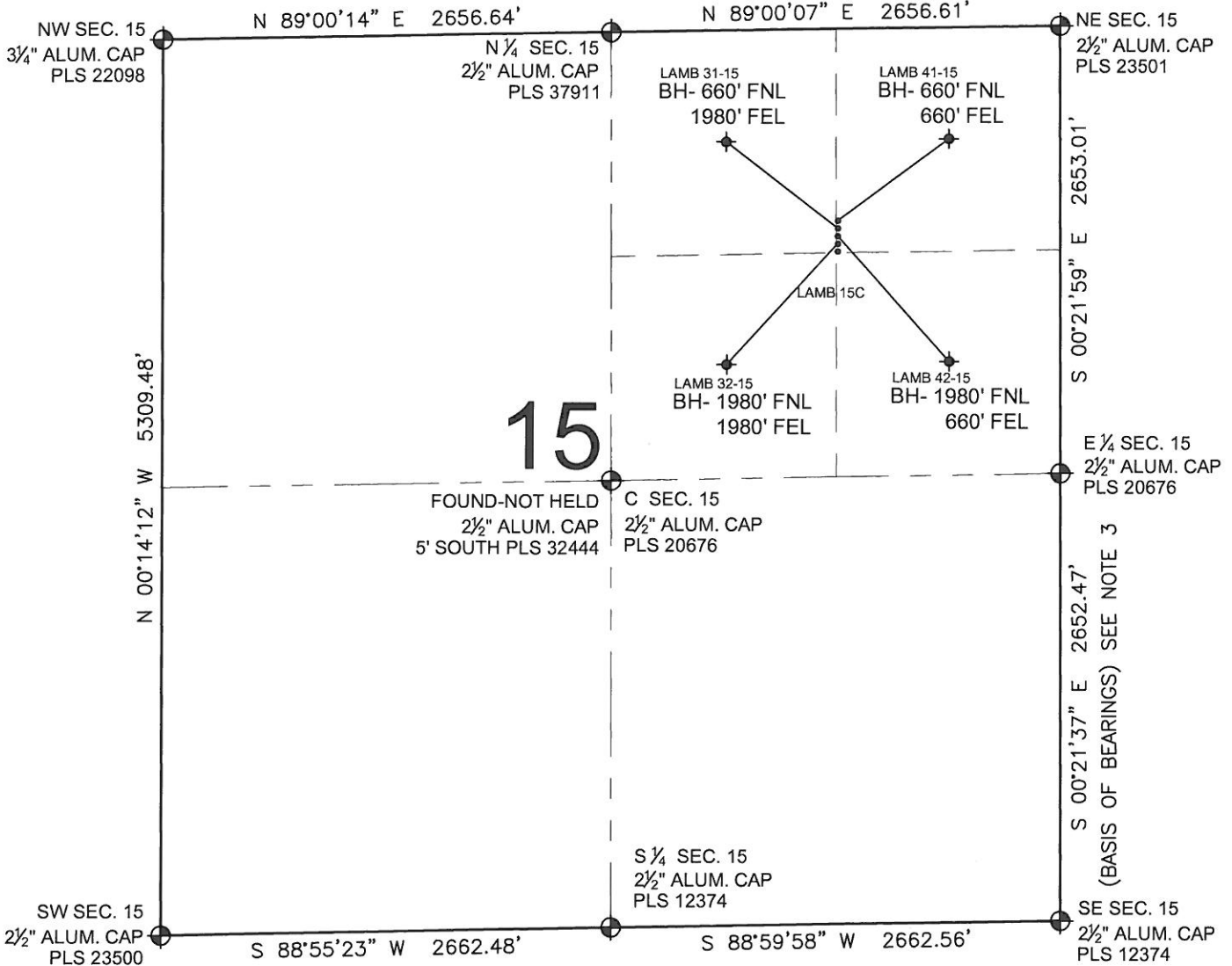


# PAD DRAWING: LAMB 5 PAD

SECTION 15, TOWNSHIP 4 NORTH, RANGE 68 WEST, 6TH P.M.



### LEGEND

- ⊕ = EXISTING MONUMENT    ⬤ = BOTTOM HOLE    BH= BOTTOM HOLE
- = PROPOSED WELL        ◆ = EXISTING WELL

### NOTES:

- THIS FIELD SURVEY CONFORMS TO THE MINIMUM STANDARDS SET BY THE C.O.G.C.C., RULE NO. 215
- HORIZONTAL POSITIONS AND ORTHOMETRIC ELEVATIONS SHOWN AT THE WELL HEAD, ARE BASED ON GPS-RTK POSITIONS DERIVED FROM MINIMUM 2-HOUR STATIC OBSERVATIONS CORRECTED BY THE NATIONAL GEODETIC SURVEY ONLINE POSITIONING USER SERVICE, O.P.U.S. DATUM: HORIZONTAL = NAD83/2007, VERTICAL = NAVD88
- THE BASIS OF BEARINGS ARE STATE PLANE COORDINATE SYSTEM GRID BEARINGS SHOWN HEREON BETWEEN THE DESCRIBED THE MONUMENTS SHOWN HEREON.
- GRID DISTANCES ARE SHOWN, AS MEASURED IN THE FIELD, WITH TIES TO WELLS MEASURED PERPENDICULAR TO SECTION LINES.

### NOTES:

- LAMB 15C TO BE AT 1320' FNL, 1320' FEL.
- LAMB 32-15 TO BE AT 1305' FNL, 1320' FEL.
- BOTTOM HOLE AT 1980' FNL & 1980' FEL.
- LAMB 42-15 TO BE AT 1290' FNL, 1320' FEL.
- BOTTOM HOLE AT 1980' FNL & 660' FEL.
- LAMB 31-15 TO BE AT 1275' FNL, 1320' FEL.
- BOTTOM HOLE AT 660' FNL & 1980' FEL.
- LAMB 41-15 TO BE AT 1260' FNL, 1320' FEL.
- BOTTOM HOLE AT 660' FNL & 660' FEL.

PREPARED BY:

**PFS**  
Petroleum Field Services, LLC  
1801 W. 13th Ave.  
Denver, CO 80204

SUNDANCE ENERGY

FIELD DATE: 11-16-11	PAD NAME: LAMB 5 PAD
DRAWING DATE: 11-18-11	SURFACE LOCATION: WELD COUNTY, COLORADO
BY: SMF	NE 1/4 NE 1/4, SEC. 15, T4N, R68W, 6TH P.M.

