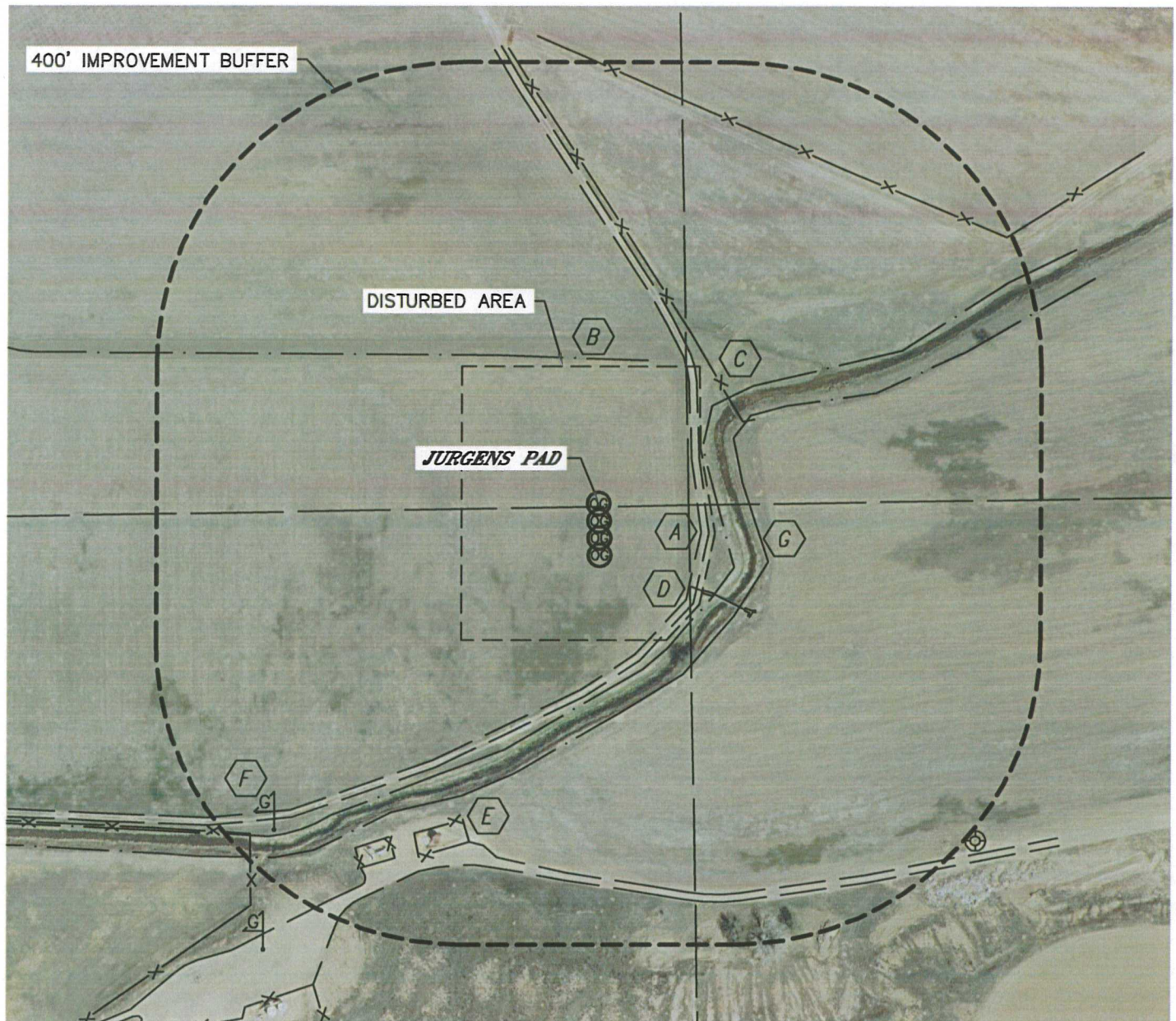


Lat40°, Inc. 1635 Foxtrail Drive, Suite 325 Loveland, CO 970-776-3321

LOCATION DRAWING

JURGENS PC B08-22D, 23, 24D & JURGENS B16-30D

SECTION: 8
TOWNSHIP: 5N
RANGE: 64W



IMPROVEMENTS:

(MEASURED FROM THE JURGENS PC B08-22D LOCATION)

- | | |
|--|----------------------------------|
| A FIELD ROAD 128' E, 483' S | F GAS LINE MARKER 604' SW |
| B GRADE BREAK 190' N | G PLUMB DITCH 150' E |
| C FENCE 217' NE, 531' NE, 630' SW | |
| D CONCRETE IRRIGATION STRUCTURE
& DITCH CROSSING 163' SE | |
| E EX. PRODUCTION EQUIPMENT (NOBLE) 452' & 517' SW | |

NEAREST: BUILDING 1355' SE, PUBLIC ROAD 1309' S (CR 58),
ABOVE GROUND UTILITY 1344' S, RAILROAD 5280'+, PROPERTY LINE 1318' S

