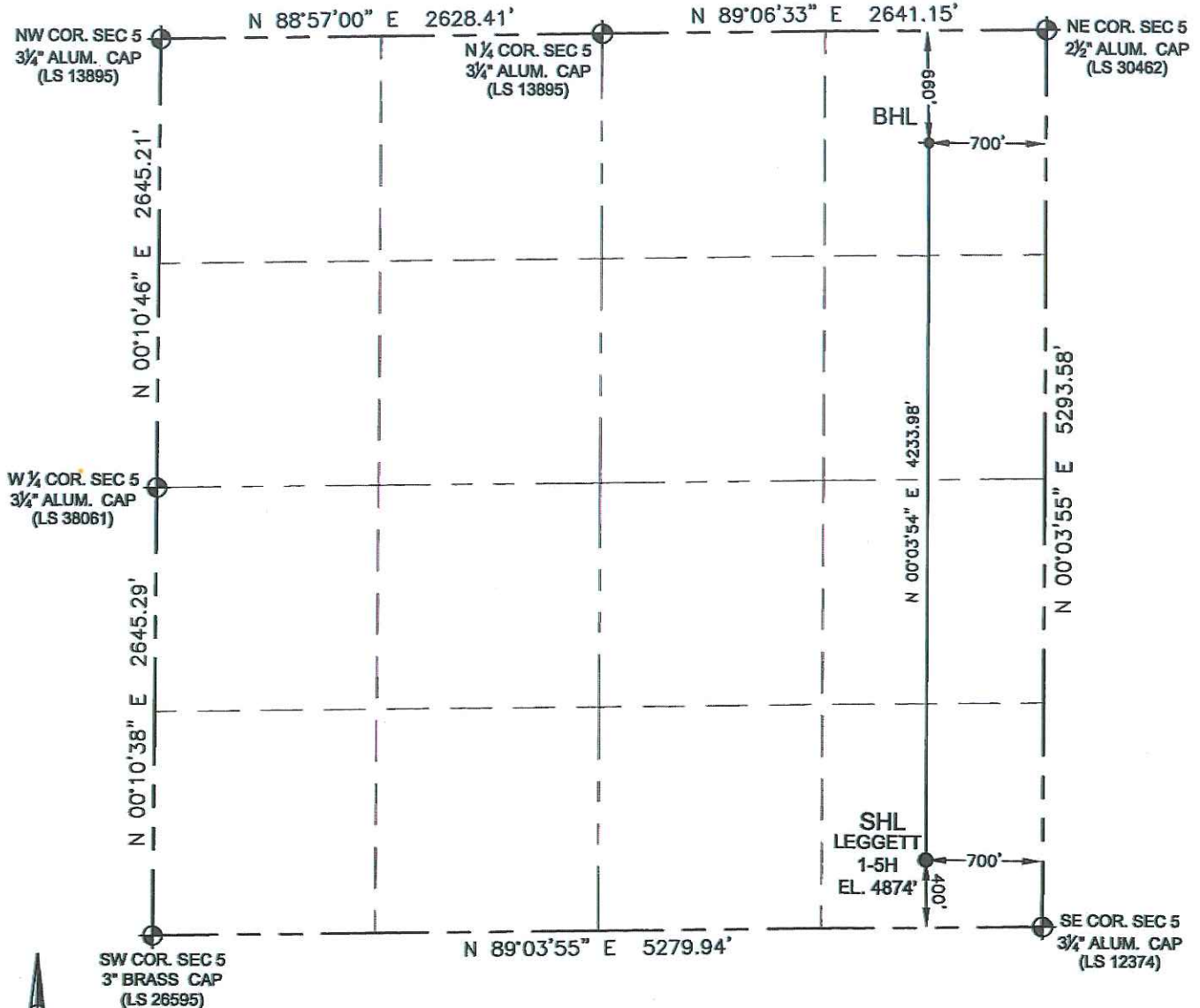


WELL LOCATION CERTIFICATE

THIS MAP DOES NOT REPRESENT A BOUNDARY SURVEY

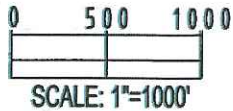
SECTION: 5
TOWNSHIP: 7N
RANGE: 60W



In accordance with a request from Marcus Simpson with Continental Resources, Petroleum Field Services, LLC has determined the surface location of the LEGGETT 1-5H to be 400' from the SOUTH line and 700' from the EAST line and the bottom hole to be 660' from the NORTH line and 700' from the EAST line as measured at right angles from the section line of Section 5, Township 7 North, Range 60 West of the Sixth Principal Meridian, County of Weld, State of Colorado.

I hereby state that this Well Location Certificate was prepared by me, or under my direct supervision, that the fieldwork was completed on 11/08/11, for and on behalf of Continental Resources, that this is not a Land Survey Plat or an Improvement Survey Plat, and that it is not to be relied upon for establishment of fence, building, or other future improvement lines.

SURFACE LOCATION:	BOTTOM HOLE:
LATITUDE: 40.598061°N	LATITUDE: 40.609682°N
LONGITUDE: 104.109932°W	LONGITUDE: 104.109676°W
PDOP: 1.2	
ELEV: 4874'	
¼¼ SE¼SE¼	
NEAREST PROPERTY LINE 400' South	



Note:

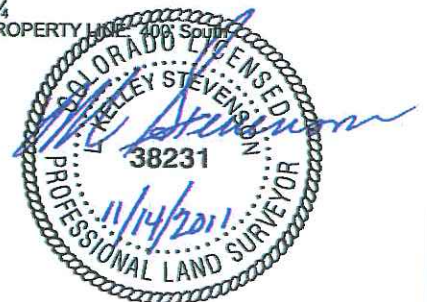
- 1) Bearings shown are Grid Bearings of the Colorado State Plane Coordinate System, North Zone, North American Datum 1983/2007. The lineal dimensions as shown herein are grid distances based upon the "U.S. Survey Foot."
- 2) Ground elevations are based on an observed GPS elevation (NAVD 1988 DATUM).
- 3) IMPROVEMENTS: See LOCATION DRAWING exhibit for all visible improvements within 400' of disturbed area.
- 4) SURFACE USE: RANGELAND
- 5) INSTRUMENT OPERATOR: BRIAN RITZ

Note:

According to Colorado law, you must commence any legal action based upon any defect in this W.L.C. within three years after you first discover such defect. In no event, may any action based upon any defect in this survey be commenced more than ten years after the date of this certification shown hereon. (13-80-105 C.R.S.)

LEGEND

- ⊕ = FOUND MONUMENT
- = PROPOSED WELL
- ⬮ = BOTTOM HOLE
- ◆ = EXISTING WELL



L. KELLEY STEVENSON, PLS 38231
COLORADO LICENSED PROFESSIONAL LAND SURVEYOR
FOR AND ON BEHALF OF P.F.S., LLC