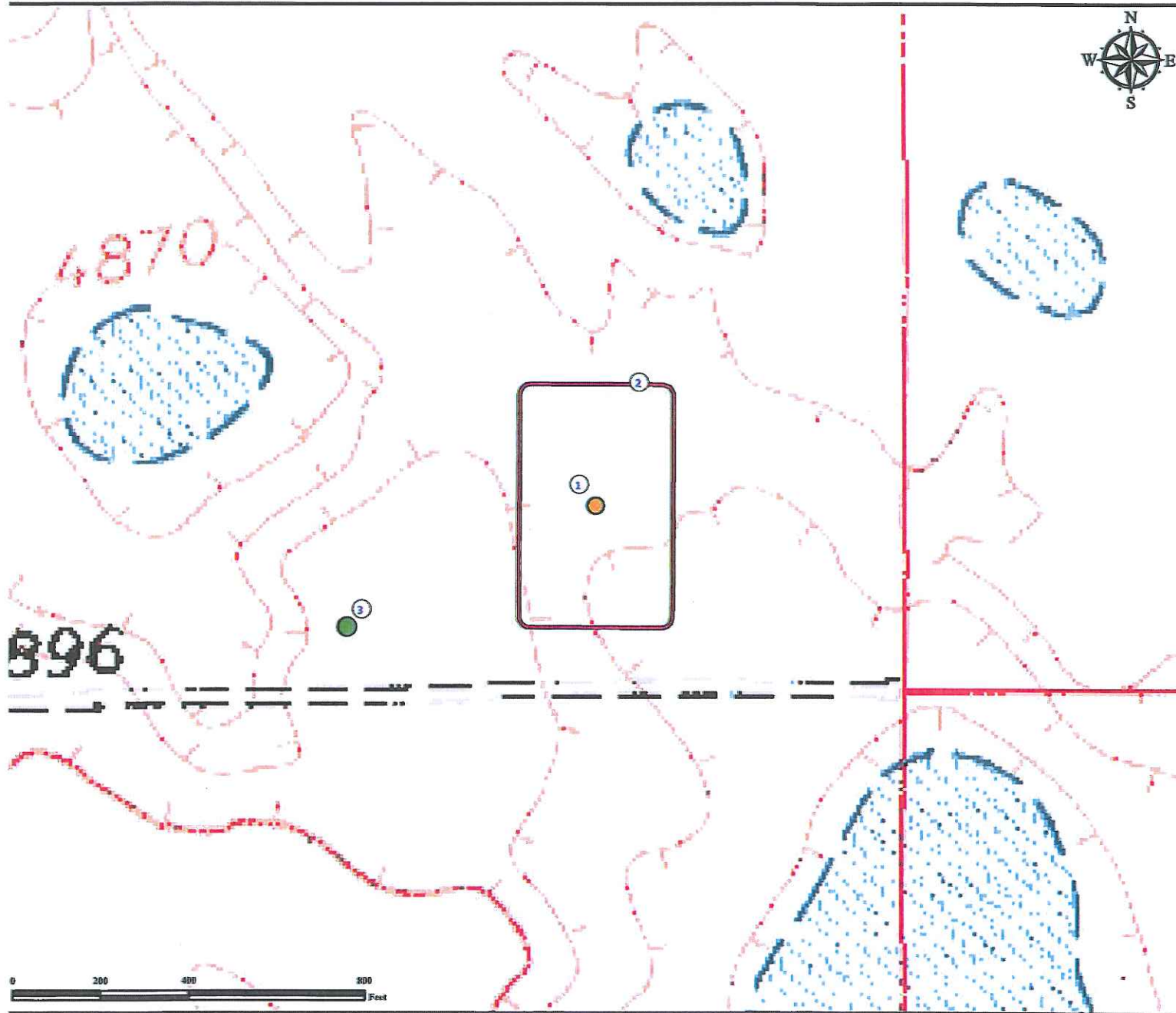


Reference Map

LEGGETT 1-5H

SE¼ SE¼ SECTION 5, TOWNSHIP 7 NORTH, RANGE 60 WEST OF THE 6TH PRINCIPAL MERIDIAN



1. Proposed Well LEGGETT 1-5H.

2. Operational Disturbance Area.

3. Reference Photo Point.

Legend



Proposed Well



Reference Photo Point



Disturbance Area

Reference Location

** All Measurements are Made from
LEGGETT 1-5H Reference Point **

Lat: 40.597328° Long: -104.111980° (NAD83)
Elevation: 4889 Feet



Use our resources to find yours!
www.petro-fs.com
(303) 928-7128

Field Date: 11/10/2011
Drafting Date: 11/21/2011
Drafter: KLM
Checked By: BHF

Data Sources:
TOPO courtesy USGS

Prepared for:

