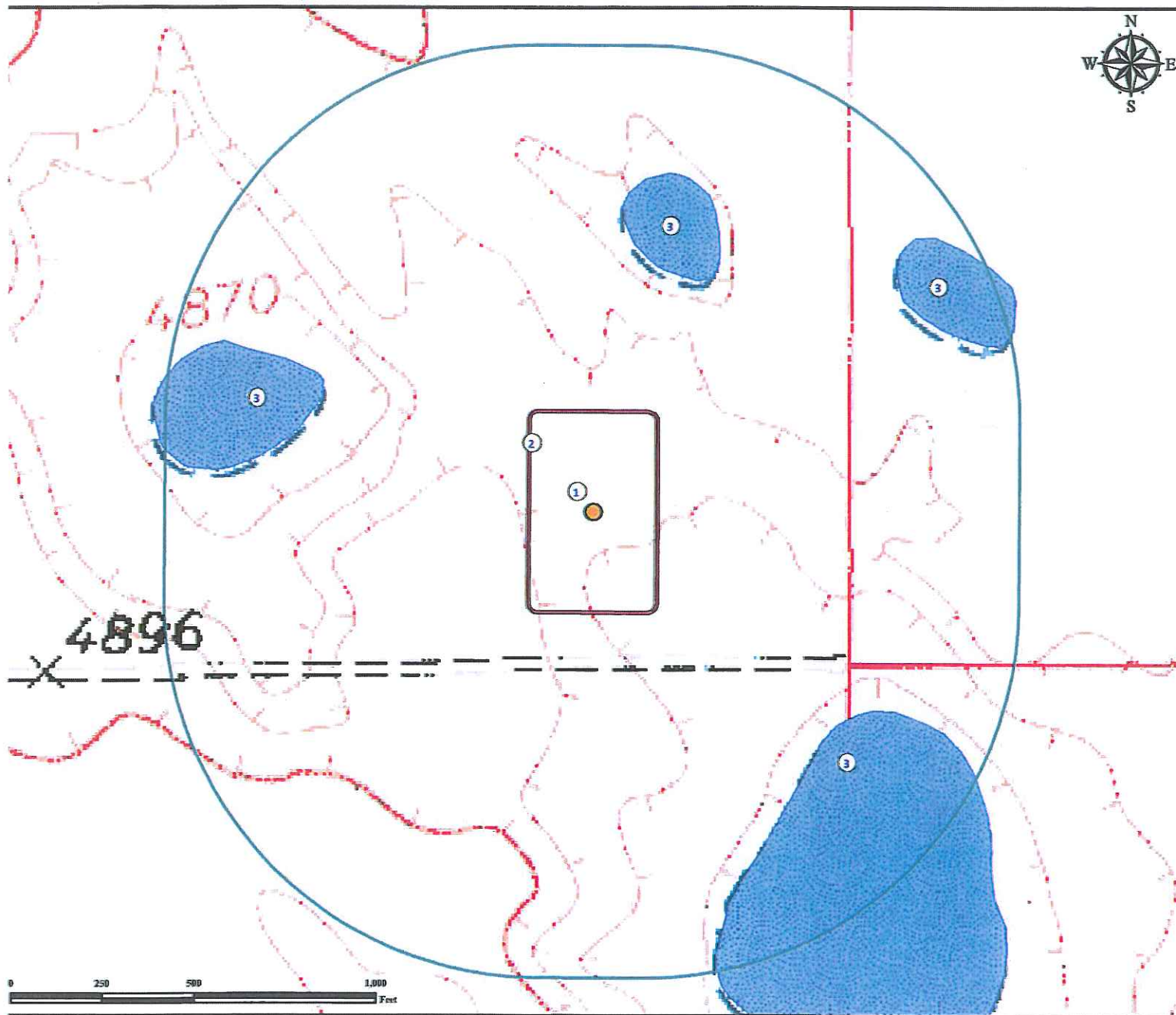


Hydrology Map

LEGGETT 1-5H

SE¼ SE¼ SECTION 5, TOWNSHIP 7 NORTH, RANGE 60 WEST OF THE 6TH PRINCIPAL MERIDIAN



1. Proposed well LEGGETT 1-5H.
2. Operational disturbance area.
3. Intermittent Ponds are $\pm 695'$ NE, $\pm 806'$ NW, $\pm 886'$ SE, and $\pm 1032'$ NE.

Legend

- Proposed Well
- Disturbance Area
- Intermittent Pond
- 1000' Radius

Reference Location

** All Measurements are Made from Reference Well LEGGETT 1-5H **

Lat: 40.598061° Long: -104.109932° (NAD83)
Elevation: 4874 Feet



Use our resources to find yours!
www.petro-fs.com
(303) 928-7128

Field Date: 11/08/2011
Drafting Date: 11/22/2011
Drafter: KLM
Checked By: BHF

Data Sources:
TOPO courtesy USGS
Intermittent Pond data courtesy of NHD

Prepared for:

