
WEXPRO COMPANY E-BILL

**BW Musser 31
POWDER WASH
Moffat County, Colorado**

Cement Production Casing

09-Dec-2011

Post Job Report

The Road to Excellence Starts with Safety

Sold To #: 343491	Ship To #: 2891055	Quote #:	Sales Order #: 9104577
Customer: WEXPRO COMPANY E-BILL	Customer Rep: SST 88, Wexpro		
Well Name: BW Musser	Well #: 31	API/UWI #: 05-081-07468	
Field: POWDER WASH	City (SAP): CRAIG	County/Parish: Moffat	State: Colorado
Legal Description: Section 4 Township 11N Range 97W			
Contractor: Wexpro	Rig/Platform Name/Num: SST 88		
Job Purpose: Cement Production Casing			
Well Type: Development Well	Job Type: Cement Production Casing		
Sales Person: VOLNER, THOMAS	Srvs Supervisor: NUNEZ HUERTA, RICARDO	MBU ID Emp #: 391224	

Job Personnel

HES Emp Name	Exp Hrs	Emp #	HES Emp Name	Exp Hrs	Emp #	HES Emp Name	Exp Hrs	Emp #
BEHM, BRANDON Adam	7	494468	CORDOBA, BENIGNO	7	440102	NESTOR, DUSTIN Howard	7	478743
NUNEZ HUERTA, RICARDO	7	391224	YOKUM, RICKY Lynn	7	473832			

Equipment

HES Unit #	Distance-1 way	HES Unit #	Distance-1 way	HES Unit #	Distance-1 way	HES Unit #	Distance-1 way
10025032C	100 mile	10025078C	100 mile	10238645C	100 mile	10295091C	100 mile
10713218	100 mile	10998510	100 mile	11041166	100 mile	11138978	100 mile
11150266	100 mile	11501581	100 mile				

Job Hours

Date	On Location Hours	Operating Hours	Date	On Location Hours	Operating Hours	Date	On Location Hours	Operating Hours
12/8/2011	4	1.5	12/9/2011	3	2.5			

TOTAL	Total is the sum of each column separately							
-------	--	--	--	--	--	--	--	--

Job

Formation Name	Job	Job Times	Date	Time	Time Zone
Formation Depth (MD) Top	Bottom	Called Out	08 - Dec - 2011	15:20	MST
Form Type	BHST	On Location	08 - Dec - 2011	20:00	MST
Job depth MD	9095. ft	Job Started	08 - Dec - 2011	23:44	MST
Water Depth	Wk Ht Above Floor	Job Completed	09 - Dec - 2011	02:02	MST
Perforation Depth (MD) From	To	Departed Loc	09 - Dec - 2011	03:30	MST

Well Data

Description	Max pressure psig	Size in	ID in	Weight lbm/ft	Thread	Grade	Top MD ft	Bottom MD ft	Top TVD ft	Bottom TVD ft
Surface Casing		9.625	8.921	36.		J-55	.	1539		
Production Openhole			7.875				1539.	9095		
Production Casing		4.5	3.92	13.5		P-110	.	9095		

Sales/Rental/3rd Party (HES)

Description	Qty	Qty uom	Depth	Supplier
MICRO MATRIX RETARDER	2	GAL		HES
PLUG,CMTG,TOP,4 1/2,HWE,3.65 MIN/4.14 MA	1	EA		HES
PLUG,CMTG,BOT,4 1/2,HWE,3.65 MIN/4.14 MA	1	EA		HES

Tools and Accessories													
Type	Size	Qty	Make	Depth	Type	Size	Qty	Make	Depth	Type	Size	Qty	Make
Guide Shoe					Packer					Top Plug	4 ½	1	HES
Float Shoe					Bridge Plug					Bottom Plug	4 ½	1	HES
Float Collar					Retainer					SSR plug set			
Insert Float										Plug Container	4 ½	1	HES
Stage Tool										Centralizers	4 ½	31	COMP
Miscellaneous Materials													
Gelling Agt			Conc		Surfactant			Conc		Acid Type		Qty	Conc %
Treatment Fld			Conc		Inhibitor			Conc		Sand Type		Size	Qty
Fluid Data													
Stage/Plug #: 1													
Fluid #	Stage Type	Fluid Name	Qty	Qty uom	Mixing Density lbm/gal	Yield ft3/sk	Mix Fluid Gal/sk	Rate bbl/min	Total Mix Fluid Gal/sk				
1	MUD FLUSH III	MUD FLUSH III - SBM (528788)	20.00	bbl	8.4	.0	.0	4.0					
	42 gal/bbl	FRESH WATER											
	0.25 gal/bbl	D-AIR 3000L, 5 GAL PAIL (101007444)											
2	ExtendaCem RS1	EXTENDACEM (TM) SYSTEM (452981)	480.0	sacks	11.5	2.63	15.5	6.0	15.5				
	0.8 %	HR-7 (100005055)											
	0.3 %	D-AIR 3000 (101007446)											
	0.125 lbm	POLY-E-FLAKE (101216940)											
	0.25 lbm	KWIK SEAL, SK (100064010)											
	15.5 Gal	FRESH WATER											
3	EconoCem RS13	ECONOCCEM (TM) SYSTEM (452992)	1210.0	sacks	14.2	1.26	5.52	6.0	5.52				
	0.2 %	HR-5, 50 LB SK (100005050)											
	0.125 lbm	POLY-E-FLAKE (101216940)											
	3 lbm	SILICALITE - COMPACTED, 50 LB SK (100012223)											
	0.25 lbm	KWIK SEAL, SK (100064010)											
	5.52 Gal	FRESH WATER											
4	ClaySurf EZ		135.3	bbl	8.4	.0	.0	6.0					
	0.1 gal/bbl	CLAYSURF-EZ, TOTETANK (101532967)											
Calculated Values		Pressures		Volumes									
Displacement	135.3	Shut In: Instant		Lost Returns	0	Cement Slurry	496.3	Pad					
Top Of Cement	SURFACE	5 Min		Cement Returns	95	Actual Displacement	135.3	Treatment					
Frac Gradient		15 Min		Spacers	25	Load and Breakdown		Total Job	656.6				
Rates													
Circulating	6	Mixing	6	Displacement	6	Avg. Job	6						
Cement Left In Pipe	Amount	15.34 ft	Reason	Shoe Joint									
Frac Ring # 1 @	ID	Frac ring # 2 @	ID	Frac Ring # 3 @	ID	Frac Ring # 4 @	ID						
The Information Stated Herein Is Correct					Customer Representative Signature								

Planned Pump Schedule

Wexpro BW Musser 31 Production Casing

1. Pressure Test HES Lines

2. Pump Spacer

	Name	Density (lb/gal)	Volume (bbls)	Rate (bpm)	Surfactants
2a.	Mud Flush III	8.4	20	4	

3. Pump Cement

	Name	Density (lb/gal)	Slurry Volume (bbls)	Rate (bpm)	Mix Water Required (bbls)
3a.	ExtendaCem RS1-Lead	11.5	225.2	6	177.2
3b.	EconoCem RS13-Tail	14.2	271.4	6	159.0

4. Shutdown, Wash Pumps and Lines, Drop Top Plug

5. Displacement

	Name	Density (lb/gal)	Volume (bbls)	Rate (bpm)
5a.	Clayfix Water	8.4	115.0	6
5b.	Clayfix Water	8.4	20.0	2



Cementing Job Log

The Road to Excellence Starts with Safety

Sold To #: 343491	Ship To #: 2891055	Quote #:	Sales Order #: 9104577
Customer: WEXPRO COMPANY E-BILL		Customer Rep: SST 88, Wexpro	
Well Name: BW Musser	Well #: 31	API/UWI #: 05-081-07468	
Field: POWDER WASH	City (SAP): CRAIG	County/Parish: Moffat	State: Colorado
Legal Description: Section 4 Township 11N Range 97W			
Lat: N 0 deg. OR N 0 deg. 0 min. 0 secs.		Long: E 0 deg. OR E 0 deg. 0 min. 0 secs.	
Contractor: Wexpro		Rig/Platform Name/Num: SST 88	
Job Purpose: Cement Production Casing			Ticket Amount:
Well Type: Development Well		Job Type: Cement Production Casing	
Sales Person: VOLNER, THOMAS		Srvc Supervisor: NUNEZ HUERTA, RICARDO	MBU ID Emp #: 391224

Activity Description	Date/Time	Cht #	Rate bbl/ min	Volume bbl		Pressure psig		Comments
				Stage	Total	Tubing	Casing	
Call Out	12/08/2011 15:20							
Depart Yard Safety Meeting	12/08/2011 17:45							HES crew members
Crew Leave Yard	12/08/2011 18:00							
Arrive At Loc	12/08/2011 20:00							
Other	12/08/2011 20:15							Wait for casing to be run
Assessment Of Location Safety Meeting	12/08/2011 21:45							HES crew members
Pre-Rig Up Safety Meeting	12/08/2011 22:00							HES crew members
Rig-Up Equipment	12/08/2011 22:15							Rig up ground
Pre-Job Safety Meeting	12/08/2011 23:15							HES crew and Rig crew members
Rig-Up Equipment	12/08/2011 23:30							Rig up floor
Pump Water	12/08/2011 23:44		2	5	5		350.0	5 bbls of Fresh water
Drop Bottom Plug	12/08/2011 23:45							HES bottom plug. Plug was loaded in the casing before start pumping.
Shutdown	12/08/2011 23:46							
Test Lines	12/08/2011 23:48							Test HES lines to 7900 psi
Pump Spacer	12/08/2011 23:49		4	20	25		340.0	20 bbls of mudflush III

Sold To # : 343491

Ship To # :2891055

Quote # :

Sales Order # : 9104577

SUMMIT Version: 7.2.27

Tuesday, December 13, 2011 03:27:00

Cementing Job Log

Pump Lead Cement	12/08/2011 23:56		6	224.8	224.8		492.0	Mix and pump 480 sks of ExtendaCem RS1 Lead cement at 11.5 lb/gal, 2.63 cuft/sk, 15.50 gal/sk
Pump Tail Cement	12/09/2011 00:34		6	180	404.8		345.0	Mix and pump 1210 sks of EconoCem RS13 Tail cement at 14.2 lb/gal, 1.26 cuft/sk, 5.52 gal/sk
Slow Rate	12/09/2011 01:04		4	60	464.8		230.0	Slow rate to 4 bpm due to rig issues on taking returns
Other	12/09/2011 01:15		6	31.5	496.3		352.0	Back online with 6 bpm
Shutdown	12/09/2011 01:22							
Clean Lines	12/09/2011 01:26							Wash pumps and lines to pit
Drop Top Plug	12/09/2011 01:29							HES top plug
Pump Displacement	12/09/2011 01:31		6	120	120		67.0	Claysurf Water
Slow Rate	12/09/2011 01:51		2	15.3	135.3		2233.0	Claysurf Water
Bump Plug	12/09/2011 01:59		2				2607.0	Took 500 psi over final circulating pressure (2607 psi)
Check Floats	12/09/2011 02:02							Floats held, 1.5 bbls back to the truck
Pre-Rig Down Safety Meeting	12/09/2011 02:15							HES crew and Rig crew members
Rig-Down Equipment	12/09/2011 02:30							
Safety Meeting - Departing Location	12/09/2011 03:15							HES crew members
Crew Leave Location	12/09/2011 03:30							
Other	12/09/2011 03:31							Good full returns during the job, 95 bbls of cement back to surface
Other	12/09/2011 03:32							Rig circ. 6 bpm for 70 min, 220 psi, 50 units of gas

Sold To # : 343491

Ship To # :2891055

Quote # :

Sales Order # :

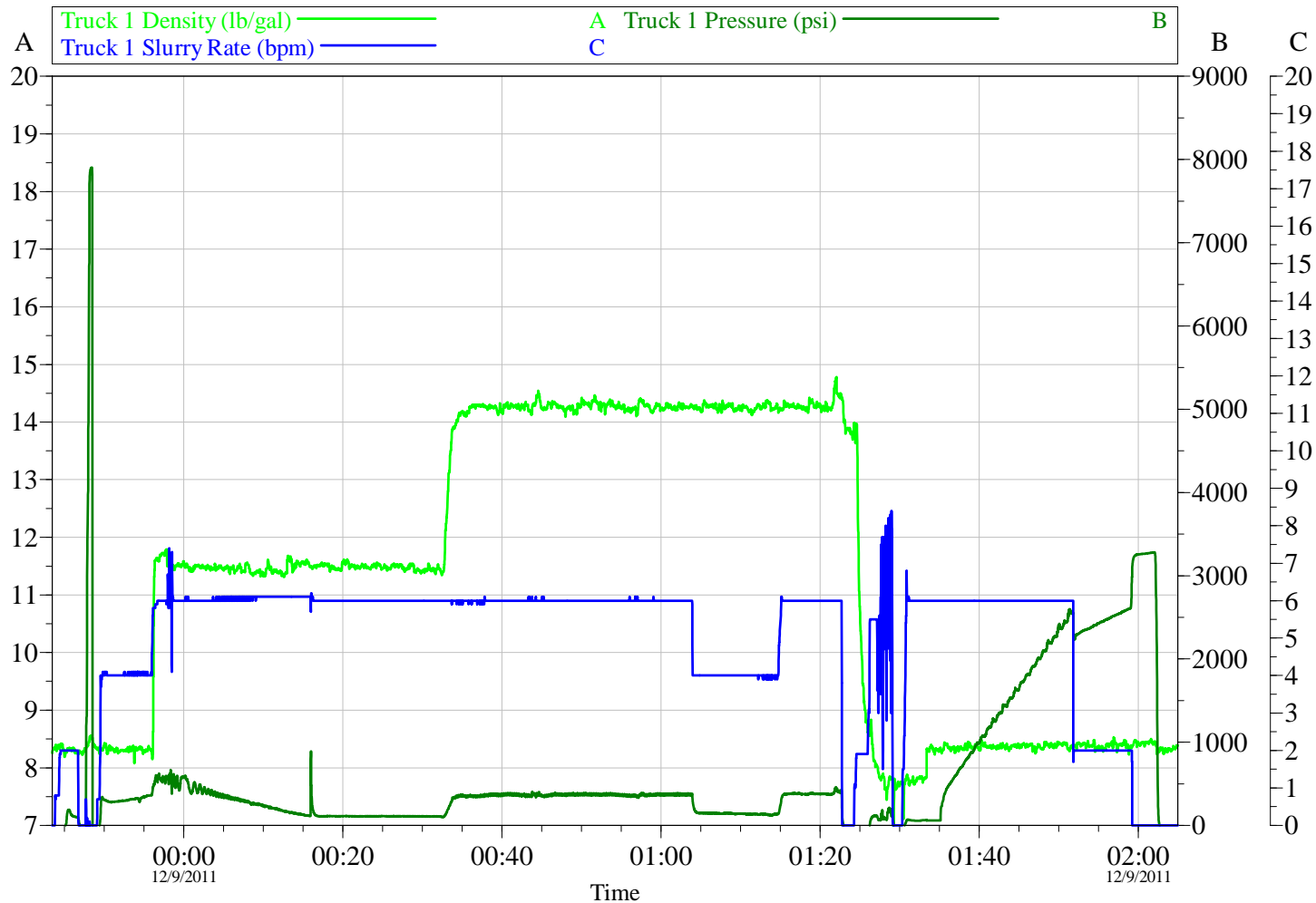
9104577

SUMMIT Version: 7.2.27

Tuesday, December 13, 2011 03:27:00

Cementing Job Log

WEXPRO, BW MUSSER 31 PRODUCTION



Customer: WEXPRO	Job Date: 08-Dec-2011	Sales Order #: 9104577
Well Description: BW MUSSER 31	Job Type: PRODUCTION	Supervisor: R. NUNEZ

OptiCem v6.4.9
09-Dec-11 02:23

Sold To #: 343491

Ship To #: 2891055

Quote #:

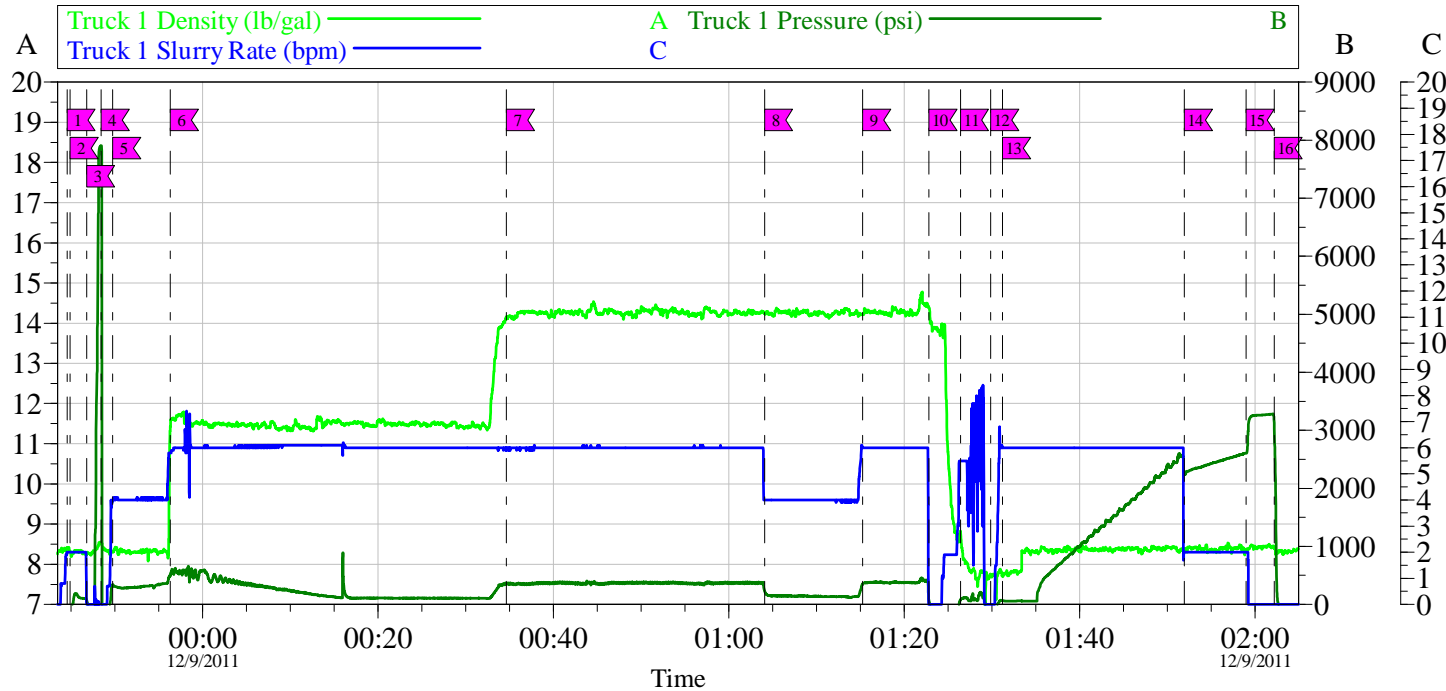
Sales Order #: 9104577

SUMMIT Version: 7.2.27

Tuesday, December 13, 2011 03:27:00

Cementing Job Log

WEXPRO, BW MUSSER 31 PRODUCTION



Local Event Log			
Intersection	TID	TIP	TISR
1 Start job / fill lines	12/8/2011 23:44:33	8.400 -23.38	2.000
2 Shutdown	12/8/2011 23:46:47	8.245 69.25	0.000
3 Pump Mudflush spacer	12/8/2011 23:49:45	8.310 339.2	4.000
4 Pump Tail cement	12/9/2011 00:34:40	14.16 345.0	6.000
5 Back to 6 bpm	12/9/2011 01:15:16	14.20 351.7	6.000
6 Clean pumps and lines	12/9/2011 01:26:25	8.830 74.17	5.500
7 Displacement	12/9/2011 01:31:12	7.730 66.59	6.000
8 Bump plug	12/9/2011 01:59:00	8.340 2607	2.000
9 Bottom plug away	12/8/2011 23:44:54	8.320 -20.00	2.000
10 Test HES lines	12/8/2011 23:48:27	8.518 7903	0.000
11 Pump Lead cement	12/8/2011 23:56:20	11.43 492.0	5.800
12 Slow rate to 4 bpm due to rig issues	12/9/2011 01:04:05	14.25 229.7	4.000
13 Shutdown	12/9/2011 01:22:50	14.39 67.06	0.000
14 Drop Top plug	12/9/2011 01:29:52	7.740 -71.00	0.000
15 Slow rate	12/9/2011 01:51:56	8.390 2233	2.000
16 Check floats / end job	12/9/2011 02:02:11	8.421 3134	0.000

Customer: WEXPRO	Job Date: 08-Dec-2011	Sales Order #: 9104577
Well Description: BW MUSSER 31	Job Type: PRODUCTION	Supervisor: R. NUNEZ

OptiCem v6.4.9
09-Dec-11 02:22

Sold To #: 343491

Ship To #: 2891055

Quote #:

Sales Order #: 9104577

SUMMIT Version: 7.2.27

Tuesday, December 13, 2011 03:27:00

Cementing Job Log

HALLIBURTON

Cementing

Water Analysis Report

COMPANY: WEXPRO Date Recorded 12/8/2011

SUBMITTED BY: RICARDO NUNEZ SO# 9104577

LEASE: BW MUSSER Job Type PRODUCTION

WELL #: 31 Camp Location ROCK SPRINGS, WY.

CEMENT MIX WATER REQUIREMENTS

Item	Recorded Test Value	Units	Max. Acceptable Limit	Potential Problems in Exceeding Limit
pH	7	----	6.0 - 8.0	Chemicals in the water can cause severe retardation
Chlorides	0	ppm	3000 ppm	Can shorten thickening time of cement
Sulfates	300	ppm	1500 ppm	Will greatly decrease the strength of cement
Total Hardness	50	ppm	500 mg/L	High concentrations will accelerate the set of the cement
Calcium	70	ppm	500 ppm	High concentrations will accelerate the set of the cement
Total Alkalinity	180	ppm	1000 ppm	Cement is greatly retarded to the point where it may not set up at all (typically occurs @ pH ≥ 8.3).
Potassium	700	ppm	5000 ppm	High concentrations will shorten the pump time of cement (indicates the presence of chlorides, therefore if Potassium levels are measured as high, so should the chlorides)
Iron	0.3	ppm	300 ppm	High concentrations will accelerate the set of the cement
Temperature	67	°F	50-80 °F	High temps will accelerate; Low temps may risk freezing in cold weather

Item	Approximate Calculated Value	Units	Max. Acceptable Limit	Potential Problems in Exceeding Limit - Calculation Method
Magnesium		ppm	300 ppm	High concentrations will accelerate the set of the cement Calculation Method: Subtract tested "Calcium" value from "Total Hardness" value.

Submitted Respectfully by: _____

Sold To # : 343491

Ship To # :2891055

Quote # :

Sales Order # : 9104577

SUMMIT Version: 7.2.27

Tuesday, December 13, 2011 03:27:00