
WEXPRO COMPANY E-BILL

**Jacks Draw 19
POWDER WASH
Moffat County , Colorado**

Cement Production Casing
10-Oct-2011

Post Job Report

The Road to Excellence Starts with Safety

Sold To #: 343491	Ship To #: 2880480	Quote #:	Sales Order #: 8510528
Customer: WEXPRO COMPANY E-BILL		Customer Rep: SST 88, Wexpro	
Well Name: Jacks Draw		Well #: 19	API/UWI #: 05-081-07616
Field: POWDER WASH	City (SAP): CRAIG	County/Parish: Moffat	State: Colorado
Legal Description: Section 10 Township 11N Range 92W			
Contractor: Wexpro		Rig/Platform Name/Num: SST 88	
Job Purpose: Cement Production Casing			
Well Type: Development Well		Job Type: Cement Production Casing	
Sales Person: VOLNER, THOMAS	Srvc Supervisor: HYDE, TYSON		MBU ID Emp #: 461616

Job Personnel

HES Emp Name	Exp Hrs	Emp #	HES Emp Name	Exp Hrs	Emp #	HES Emp Name	Exp Hrs	Emp #
BEHM, BRANDON Adam	8	494468	CORDOBA, BENIGNO	4	440102	HYDE, TYSON Joe	11	461616
NESTOR, DUSTIN Howard	8	478743	YOKUM, RICKY Lynn	11	473832			

Equipment

HES Unit #	Distance-1 way	HES Unit #	Distance-1 way	HES Unit #	Distance-1 way	HES Unit #	Distance-1 way
10025113C	100 mile	10238645C	100 mile	10295091C	100 mile	10322492C	100 mile
10998510	100 mile	11041166	100 mile	11138978	100 mile	11288862	100 mile
11501577	100 mile						

Job Hours

Date	On Location Hours	Operating Hours	Date	On Location Hours	Operating Hours	Date	On Location Hours	Operating Hours
10/09/2011	4.5	3	10/10/2011	6.5	2			

TOTAL Total is the sum of each column separately

Job

Formation Name	Top	Bottom	Called Out	Date	Time	Time Zone
Formation Depth (MD)			On Location	09 - Oct - 2011	15:00	MST
Form Type		BHST	On Location	09 - Oct - 2011	19:30	MST
Job depth MD	9370. ft	Job Depth TVD	Job Started	10 - Oct - 2011	03:16	MST
Water Depth		Wk Ht Above Floor	Job Completed	10 - Oct - 2011	05:37	MST
Perforation Depth (MD)	From	To	Departed Loc	10 - Oct - 2011	06:45	MST

Well Data

Description	Max pressure psig	Size in	ID in	Weight lbm/ft	Thread	Grade	Top MD ft	Bottom MD ft	Top TVD ft	Bottom TVD ft
Production Openhole			7.875				538.	9370.		
Production Casing		4.5	3.92	13.5		P-110	.	9370.		
Surface Casing		9.625	8.921	36.		J-55	.	538.		

Sales/Rental/3rd Party (HES)

Description	Qty	Qty uom	Depth	Supplier
MICRO MATRIX RETARDER	2	GAL		
PLUG,CMTG,TOP,4 1/2,HWE,3.65 MIN/4.14 MA	1	EA		
PLUG,CMTG,BOT,4 1/2,HWE,3.65 MIN/4.14 MA	1	EA		

Tools and Accessories

Type	Size	Qty	Make	Depth	Type	Size	Qty	Make	Depth	Type	Size	Qty	Make
Guide Shoe					Packer					Top Plug	4.5	1	HES
Float Shoe					Bridge Plug					Bottom Plug	4.5	1	HES
Float Collar					Retainer					SSR plug set			
Insert Float										Plug Container	4.5	1	HES
Stage Tool										Centralizers	4.5	40	COMP

Miscellaneous Materials

Gelling Agt		Conc		Surfactant		Conc		Acid Type		Qty		Conc	%
Treatment Fld		Conc		Inhibitor		Conc		Sand Type		Size		Qty	
Fluid Data													
Stage/Plug #: 1													
Fluid #	Stage Type	Fluid Name			Qty	Qty uom	Mixing Density lbm/gal	Yield ft ³ /sk	Mix Fluid Gal/sk	Rate bbl/min	Total Mix Fluid Gal/sk		
1	MUD FLUSH III	MUD FLUSH III - SBM (528788)			20.00	bbl	8.4	.0		7			
	42 gal/bbl	FRESH WATER											
	0.25 gal/bbl	D-AIR 3000L, 5 GAL PAIL (101007444)											
2	ExtendaCem RS1	EXTENDACEM (TM) SYSTEM (452981)			575.0	sacks	11.50	2.63	15.47	7	15.47		
	0.8 %	HR-7 (100005055)											
	0.3 %	D-AIR 3000 (101007446)											
	0.125 lbm	POLY-E-FLAKE (101216940)											
	0.25 lbm	KWIK SEAL, SK (100064010)											
	15.46 Gal	FRESH WATER											
3	EconoCem RS13	ECONOCEM (TM) SYSTEM (452992)			1065.0	sacks	14.20	1.49	6.51	7	6.51		
	0.18 %	HR-5, 50 LB SK (100005050)											
	3 lbm	SILICALITE - COMPACTED, 50 LB SK (100012223)											
	0.125 lbm	POLY-E-FLAKE (101216940)											
	0.25 lbm	KWIK SEAL, SK (100064010)											
	5.5 Gal	FRESH WATER											
4	ClaySurf EZ				140.00	bbl	8.4	.0	.0	7			
	0.1 gal/bbl	CLAYSURF-EZ, TOTETANK (101532967)											
Calculated Values		Pressures		Volumes									
Displacement	139.5	Shut In: Instant	0	Lost Returns	0	Cement Slurry	552	Pad					
Top Of Cement	SURFACE	5 Min		Cement Returns	150	Actual Displacement	140	Treatment					
Frac Gradient		15 Min		Spacers	20	Load and Breakdown		Total Job	712				
Rates													
Circulating	7	Mixing	7	Displacement	7	Avg. Job	7						
Cement Left In Pipe	Amount	13.42 ft	Reason	Shoe Joint									
Frac Ring # 1 @	ID	Frac ring # 2 @	ID	Frac Ring # 3 @	ID	Frac Ring # 4 @	ID						
The Information Stated Herein Is Correct				Customer Representative Signature									

PLANNED PUMP SCHEDULE
Wexpro Jacks Draw 19 Production Casing
1. Pressure Test HES Lines
2. Pump Spacer

	Name	Density (lb/gal)	Volume (bbls)	Rate (bpm)	Surfactants
2a.	Mud Flush III	8.4	20	2	

3. Pump Cement

	Name	Density (lb/gal)	Slurry Volume (bbls)	Rate (bpm)	Mix Water Required (bbls)
3a.	ExtendaCem RS1-Lead	11.5	269.5	6	211.8
3b.	EconoCem RS13-Tail	14.2	283.1	6	165.1

4. Shutdown, Wash Pumps and Lines, Drop Top Plug
5. Displacement

	Name	Density (lb/gal)	Volume (bbls)	Rate (bpm)
5a.	Clayfix Water	8.4	120.0	6
5b.	Clayfix Water	8.4	20.0	2

The Road to Excellence Starts with Safety

Sold To #: 343491	Ship To #: 2880480	Quote #:	Sales Order #: 8510528
Customer: WEXPRO COMPANY E-BILL		Customer Rep: SST 88, Wexpro	
Well Name: Jacks Draw		Well #: 19	API/UWI #: 05-081-07616
Field: POWDER WASH	City (SAP): CRAIG	County/Parish: Moffat	State: Colorado
Legal Description: Section 10 Township 11N Range 92W			
Lat: N 0 deg. OR N 0 deg. 0 min. 0 secs.		Long: E 0 deg. OR E 0 deg. 0 min. 0 secs.	
Contractor: Wexpro		Rig/Platform Name/Num: SST 88	
Job Purpose: Cement Production Casing			Ticket Amount:
Well Type: Development Well		Job Type: Cement Production Casing	
Sales Person: VOLNER, THOMAS		Srv Supervisor: HYDE, TYSON	MBU ID Emp #: 461616

Activity Description	Date/Time	Cht #	Rate bbl/min	Volume bbl		Pressure psig		Comments
				Stage	Total	Tubing	Casing	
Call Out	10/09/2011 15:00							
Pre-Convoy Safety Meeting	10/09/2011 16:45							WITH HES CREW , TALKED ABOUT THE HAZARDS OF DRIVING TO LOCATION
Crew Leave Yard	10/09/2011 17:00							
Arrive At Loc	10/09/2011 19:00							
Assessment Of Location Safety Meeting	10/09/2011 19:10							WITH HES CREW, TALKED ABOUT THE HAZARDS OF SPOTTING EQUIPMENT,
Pre-Rig Up Safety Meeting	10/09/2011 19:15							WITH HES CREW , TALKED AOUT THE HAZARDS OF RIGGING UP WATER, BULK , IRON
Rig-Up Equipment	10/09/2011 19:30							RIG UP WATER, BULK , IRON
Rig-Up Completed	10/09/2011 21:30							
Other	10/09/2011 21:45							WAIT FOR BULK TRUCK TO SHOW UP ON LOCATION, HAD PROBLEMS WITH BULK TRAILER WHILE TRANSPORTING TO LOCATION.
Other	10/10/2011 02:15							BULK TRUCK SHOW UP ON LOCATION
Activity Description	Date/Time	Cht #	Rate bbl/min	Volume bbl		Pressure psig		Comments
				Stage	Total	Tubing	Casing	

Sold To # : 343491

Ship To # :2880480

Quote # :

Sales Order # : 8510528

SUMMIT Version: 7.2.27

Tuesday, October 18, 2011 10:49:00

Pre-Job Safety Meeting	10/10/2011 02:50							WITH HES CREW, RIG CREW TALKED ABOUT THE JOB AND THE HAZARDS OF DOING THE JOB
Start Job	10/10/2011 03:16							
Pump Water	10/10/2011 03:16		2	5	5		230.0	PUMP 5 BBLS OF FRESH WATER TO FILL LINES
Shutdown	10/10/2011 03:18							
Pressure Test	10/10/2011 03:19							PRESSURE TEST HES LINES TO 7934 PSI
Pump Spacer	10/10/2011 03:21		7	20	20		450.0	MIX AND PUMP 20 BBLS MUD FLUSH III
Drop Bottom Plug	10/10/2011 03:25							DROP HES BOTTOM PLUG WITNESSED BY COMPANY MAN
Pump Lead Cement	10/10/2011 03:27		7	269	269		785.0	MIX AND PUMP 575 SKS OF EXTENDACEM RS1-LEAD @ 11.50 PPG 2.63 Y 15.47 GAL/SK
Other	10/10/2011 03:28							MIS AUTO CAL ON H20
Pump Tail Cement	10/10/2011 04:09		7	68	337		353.0	MIXED AND PUMP 1065 SKS OF ECONOCER RS13-TAIL @ 14.20 PPG 1.49 Y 6.51 GAL/SKS
Slow Rate	10/10/2011 04:18		6	215	552		330.0	SLOWED RATE DO TO DENSITY ISSUE, STAYED AT 6 BPM MIN AND MAINTAINED GOOD DENSITY
Shutdown	10/10/2011 04:57							
Clean Lines	10/10/2011 05:01							WASH PUMPS AND LINES TO PIT.
Drop Top Plug	10/10/2011 05:04							DROP HES TOP PLUG WITNESSED BY COMPANY MAN
Pump Displacement	10/10/2011 05:05		6	120	120		2650.0	PUMP CLAYSURF WATER
Slow Rate	10/10/2011 05:23		2	20	140		2240.0	PUMP CLAYSURF WATER
Bump Plug	10/10/2011 05:33						2665.0	BUMP PLUG AND TOOK 500 PSI OVER FINAL CIRCULATING PRESSURE TO
Activity Description	Date/Time	Cht	Rate bbl/ min	Volume bbl		Pressure psig		Comments

Sold To # : 343491

Ship To # : 2880480

Quote # :

Sales Order # :

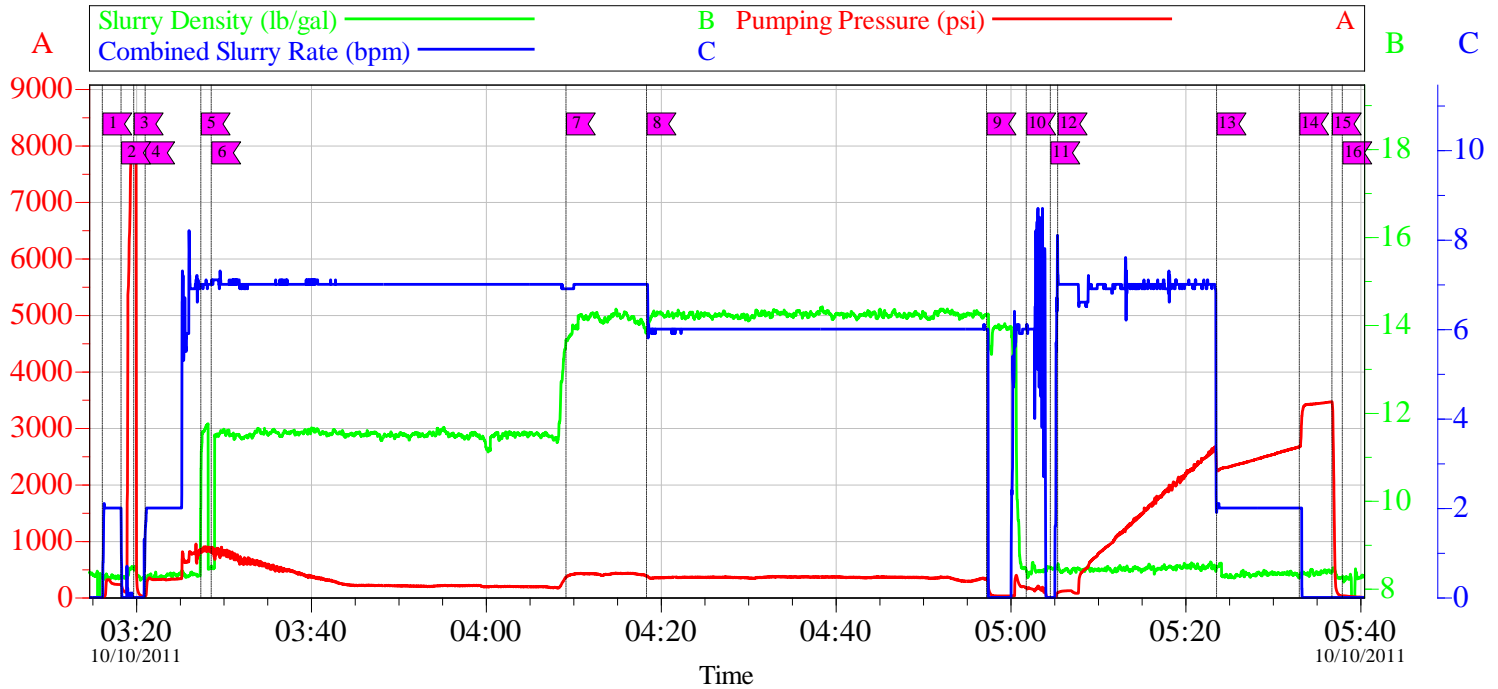
8510528

SUMMIT Version: 7.2.27

Tuesday, October 18, 2011 10:49:00

		#		Stage	Total	Tubing	Casing	
Check Floats	10/10/2011 05:36						3464. 0	FLOATS HELD RETURNED 2 BBLS BACK TO PUMP TRUCK
Pre-Rig Down Safety Meeting	10/10/2011 05:45							WITH HES,RIG CREW, TALKED ABOUT THE HAZARDS OF RIGGING DOWN EQUIPMENT
Rig-Down Equipment	10/10/2011 05:50							RIG DOWN , FLOOR, IRON, WATER, BULK
Other	10/10/2011 06:09							
Rig-Down Completed	10/10/2011 06:30							
Pre-Convoy Safety Meeting	10/10/2011 06:45							WITH HES CREW , TALKED ABOUT THE HAZARDS OF DRIVING BACK TO THE YARD
Crew Leave Location	10/10/2011 06:50							
Other	10/10/2011 06:51							FULL RETURNS THROUGHOUT JOB CIRCULATED 150 BBLS OF CEMENT TO SURFACE
Other	10/10/2011 06:52							RIG CIRCLUATED FOR 6 HRS @ 7 BPM , 900 PSI , DUE TO WAITING FOR BULK TRUCK TO SHOW UP

WEXPRO JACKS DRAW 19 PRODUCTION

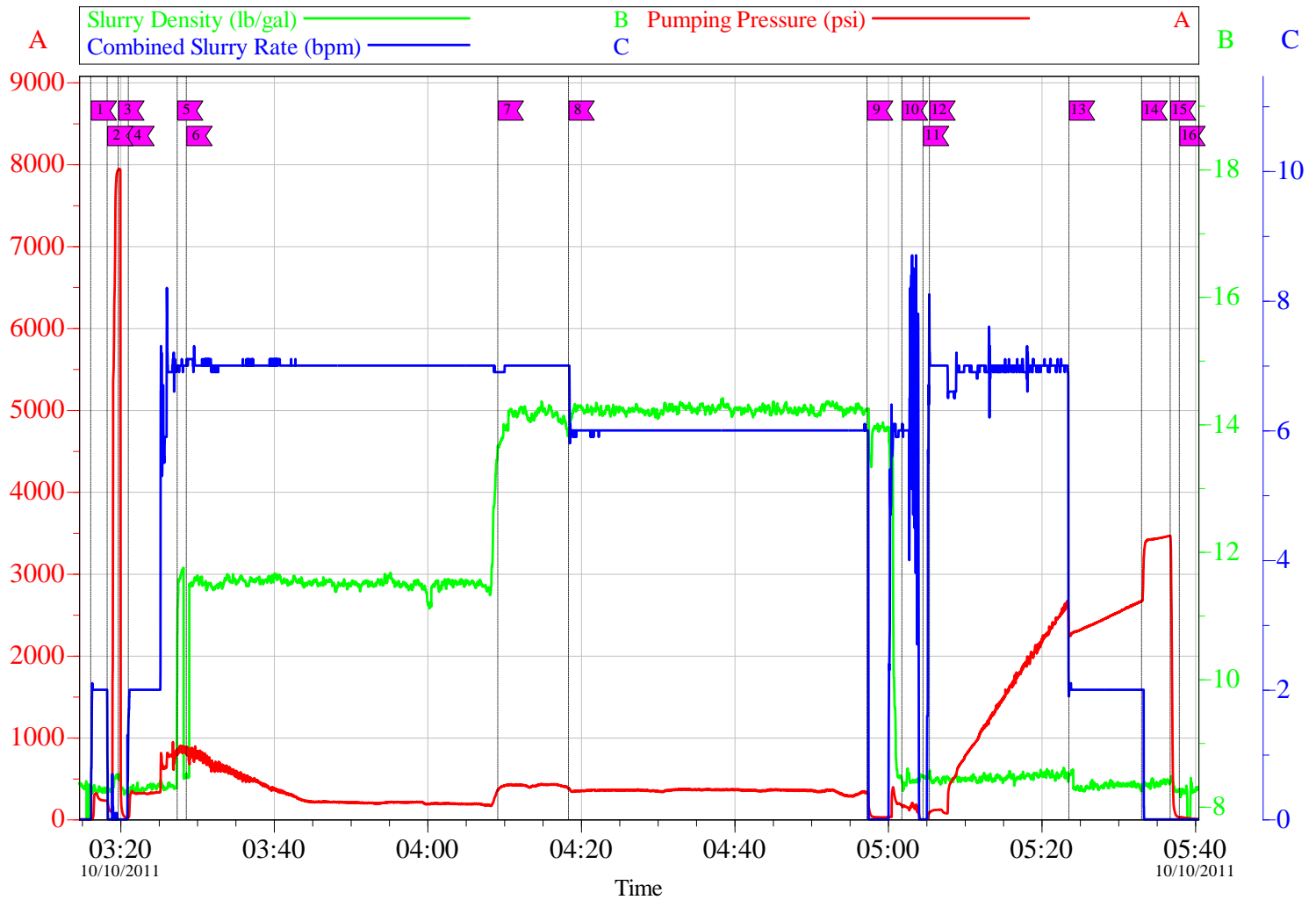


Local Event Log			
Intersection	PP	Intersection	PP
1 START JOB/FILL LINES	03:16:08 0.000	2 SHUTDOWN	03:18:18 230.0
3 PRESSURE TEST	03:19:44 793.4	4 PUMP MUD FLUSH	03:21:03 21.01
5 PUMP LEAD CMT	03:27:24 785.0	6 MIS AUTO CAL.	03:28:36 811.4
7 PUMP TAIL CMT	04:09:10 353.3	8 SLOW RATE, DO TO MIXING PROBLEMS	04:18:22 375.4
9 SHUTDOWN	04:57:16 330.3	10 WASH PUMPS LINES	05:01:48 176.9
11 DROP TOP PLUG	05:04:33 -29.41	12 START DISPLACEMENT	05:05:24 87.32
13 SLOW RATE	05:23:35 2240	14 BUMP PLUG	05:33:02 2665
15 CHECK FLOATS	05:36:45 3464	16 END JOB	05:37:57 30.00

Customer: WEXPRO	Job Date: 09-Oct-2011	Sales Order #: 8510528
Well Description: JACKS DRAW 19	Job Type : PRODUCTION	Supervisor TYSON HYDE

OptiCem v6.4.10
10-Oct-11 06:06

WEXPRO JACKS DRAW 19 PRODUCTION



Customer: WEXPRO	Job Date: 09-Oct-2011	Sales Order #: 8510528
Well Description: JACKS DRAW 19	Job Type : PRODUCTION	Supervisor TYSON HYDE

OptiCem v6.4.10
10-Oct-11 06:07

HALLIBURTON

Cementing

Water Analysis Report

COMPANY: WEXPRO Date Recorded 10/9/2011

SUBMITTED BY: TYSON HYDE SO# 8510528

LEASE: JACKS DRAW Job Type PRODUCTION

WELL #: 19 Camp Location Rock Springs WYO

CEMENT MIX WATER REQUIREMENTS

Item	Recorded Test Value	Units	Max. Acceptable Limit	Potential Problems in Exceeding Limit
pH	6	---	6.0 - 8.0	Chemicals in the water can cause severe retardation
Chlorides	0	ppm	3000 ppm	Can shorten thickening time of cement
Sulfates	<200	ppm	1500 ppm	Will greatly decrease the strength of cement
Total Hardness	120	ppm	500 mg/L	High concentrations will accelerate the set of the cement
Calcium	100	ppm	500 ppm	High concentrations will accelerate the set of the cement
Total Alkalinity	100	ppm	1000 ppm	Cement is greatly retarded to the point where it may not set up at
Potassium	400	ppm	5000 ppm	High concentrations will shorten the pump time of cement
Iron	1	ppm	300 ppm	High concentrations will accelerate the set of the cement
Temperature	70	°F	50-80 °F	High temps will accelerate; Low temps may risk freezing in cold we