



Gamma Ray C.C.L.V.D.L.
Radial Bond

Company	Barrett Resources Corporation
Well	Rothe 44-30-5-63
Field	Wattenberg
County	Weld
	State
	Colorado

API #: 05-123-32101-0000

Other Services

SEC 30 TWP 5N RGE 63W

Permanent Datum	GL
Log Measured From	KB
Drilling Measured From	KB

GL

Eleva

KB

Elevations	
K.B.	4590
D.F.	4589
G.L.	4576

Date	November 18, 2011
------	-------------------

Run Number	One
------------	-----

Depth Logger	6667
--------------	------

Bottom Logged Interval	6665
------------------------	------

Top Log Interval	1992
------------------	------

Open Hole Size	7 7/8"
----------------	--------

Type-Fluid	Water
Conductivity	1000

Density / Viscosity	Not Bonded
---------------------	------------

Estimated Cement Ton	2316
Max. Recolued 1mlip.	Not Recolued

Estimated Cement Top	22.10
Time Well Ready	N/A

Time to get ready	N/A
Time to get on Bottom	N/A

Equipment Number	24
------------------	----

Location	Fort Morgan
----------	-------------

Recorded By	Scott Dizmang
-------------	---------------

Witnessed By	Chris Adamson
--------------	---------------

[illegible]

Run Number	Bit	From	To
------------	-----	------	----

--	--	--	--	--

--	--	--	--	--

--	--	--	--	--

Casing Record	Size	Wgt/Ft
---------------	------	--------

Surface String	8 5/8"	24
----------------	--------	----

Prot. String		

Production String	4 1/2"	11.6
-------------------	--------	------

Linear		
--------	--	--

<<< Fold Here >>>

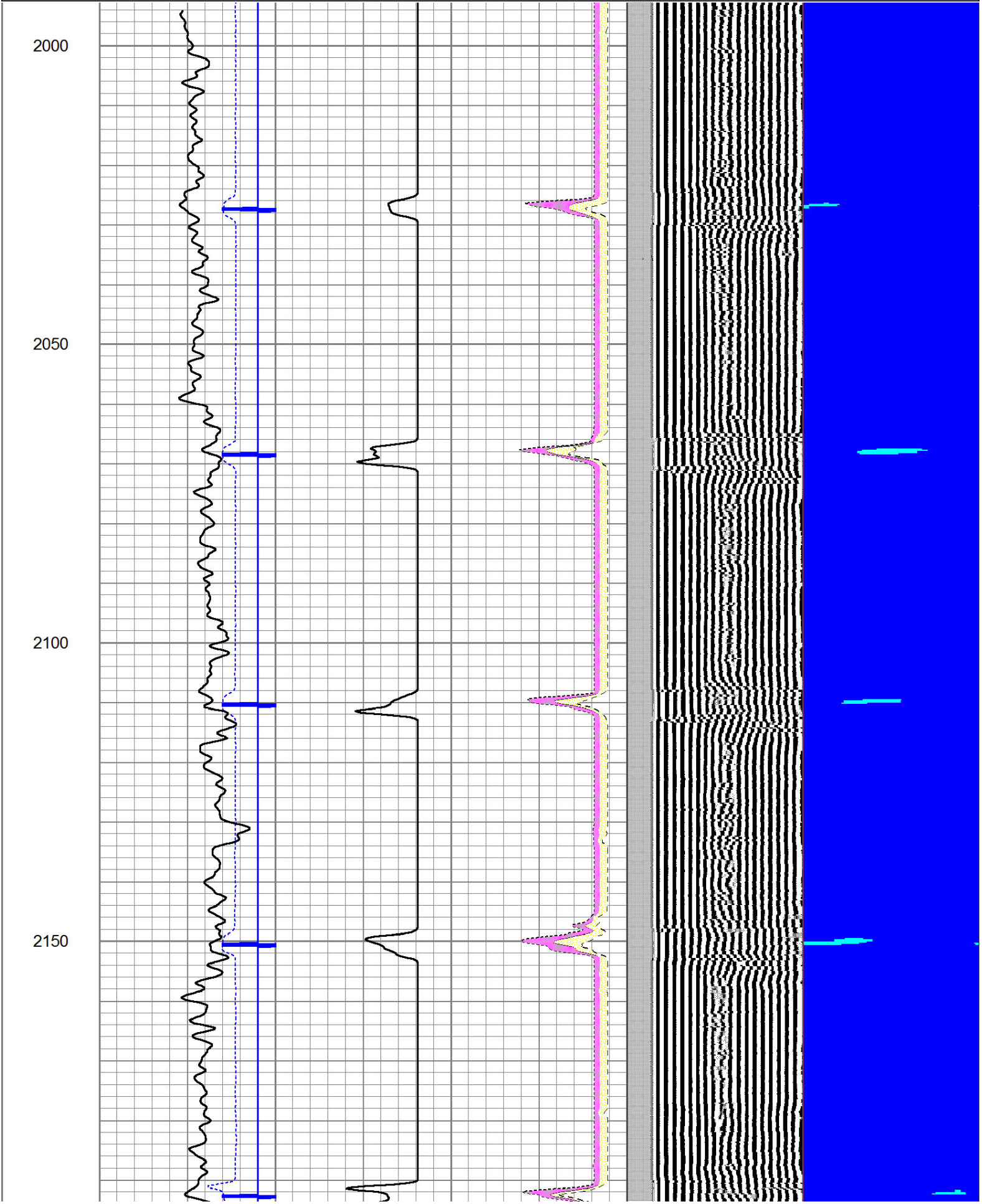
All interpretations are opinions based on inferences from electrical or other measurements and we cannot and do not guarantee the accuracy or correctness of any interpretation, and we shall not, except in the case of gross or willful negligence on our part, be liable or responsible for any loss, costs, damages, or expenses incurred or sustained by anyone resulting from any interpretation made by any of our officers, agents or employees. These interpretations are also subject to our general terms and conditions set out in our current Price Schedule.

Comments

Log correlated to Schlumberger open hole log dated November 3, 2011
Marker Joints @
6568-6582
6293-6321

Database File: rothe 44-30.db
Dataset Pathname: pass2
Presentation Format: scbl02
Dataset Creation: Fri Nov 18 18:27:16 2011 by Log Std Casedhole 09061
Charted by: Depth in Feet scaled 1:240

Charted by:		Depth in Feet scaled 1:210												
310	TT (usec)	210	0	AMP (mV)	100	0	AMPAVG	150	200	VDL	1200	1	SECTOR MAP	8
-9	CCL	1	0	AMPx5 (mV)	20	0	AMPMAX	150				25		75
0	GR (GAPI)	200				0	AMPMIN	150						



2200

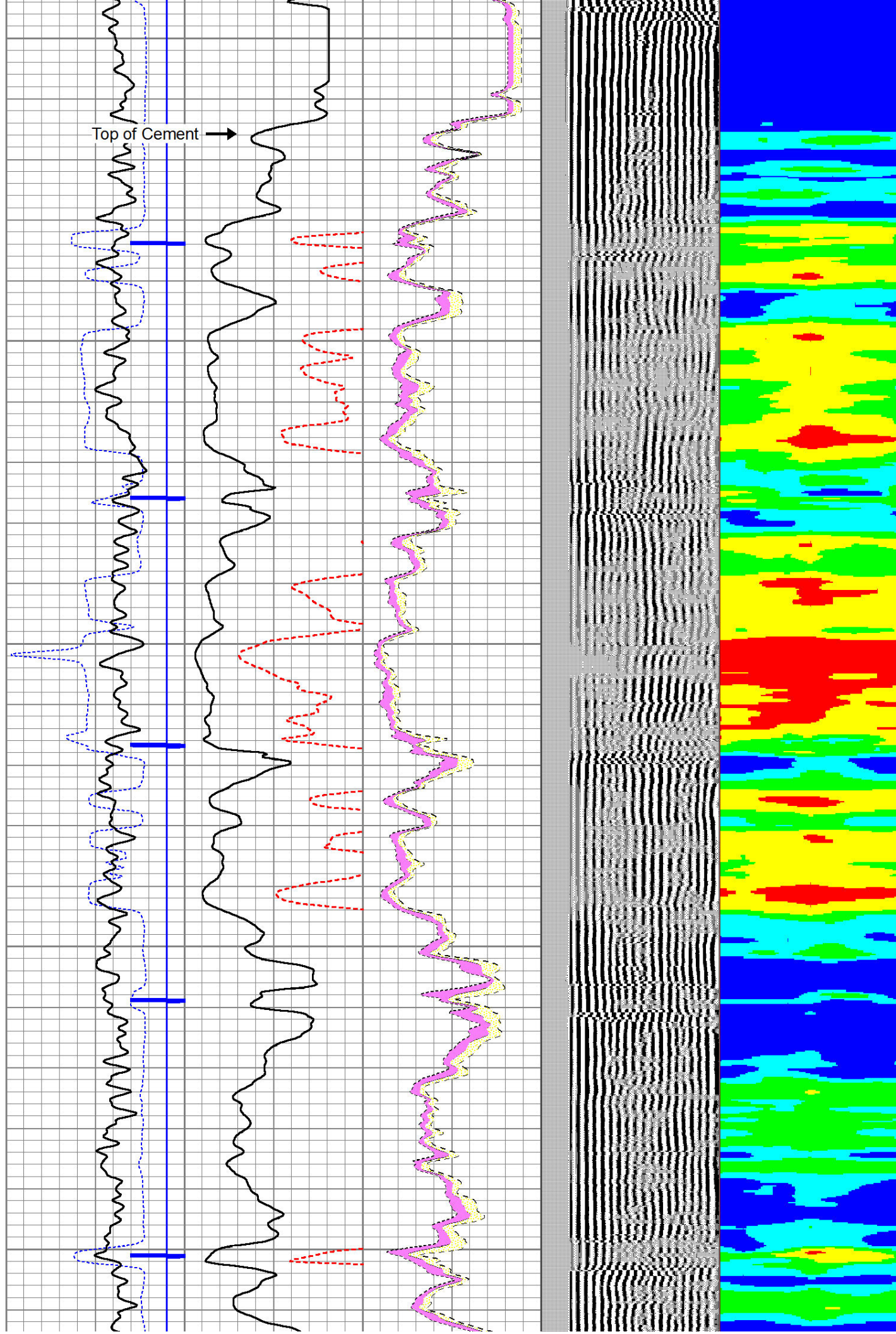
Top of Cement →

2250

2300

2350

2400

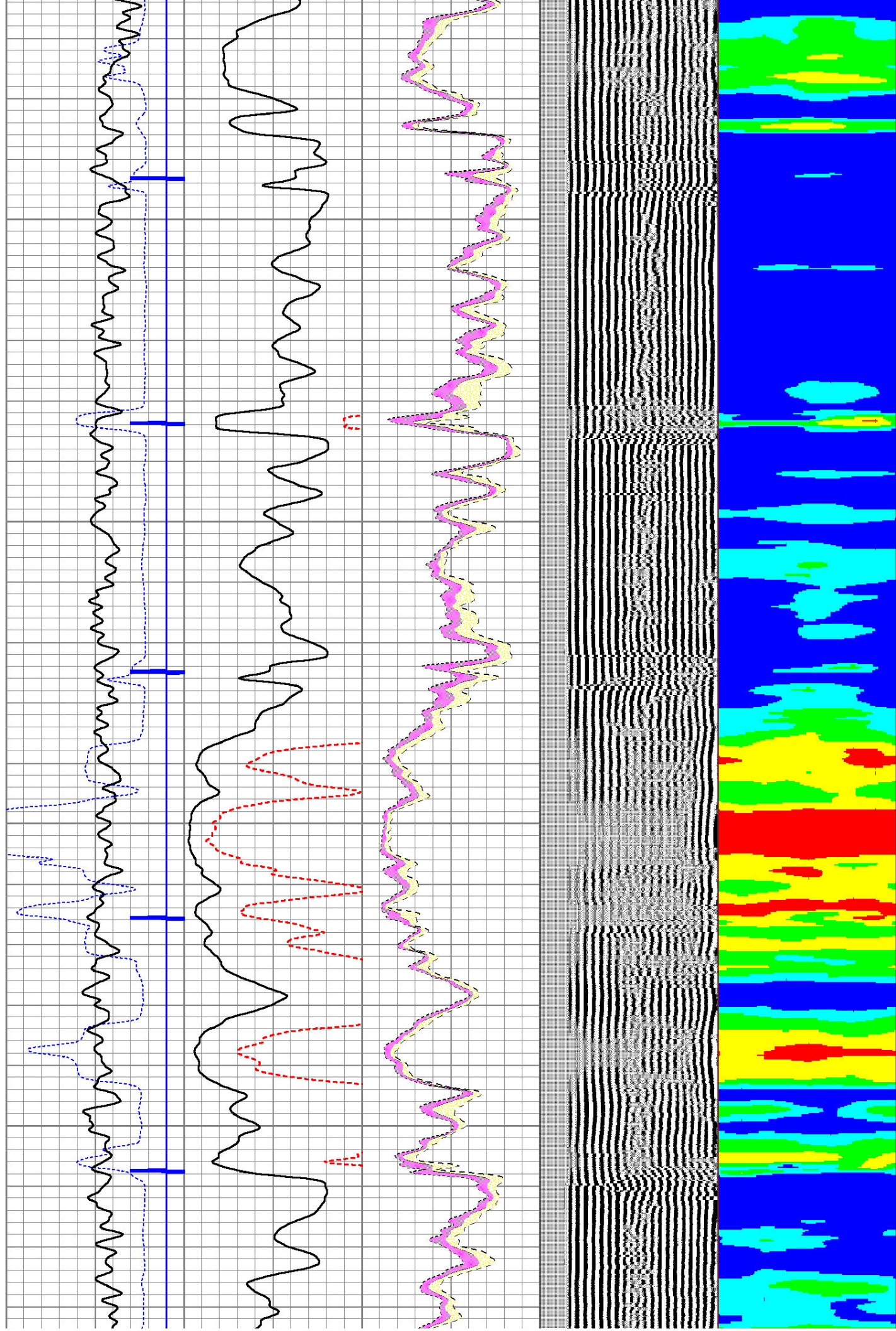


2450

2500

2550

2600



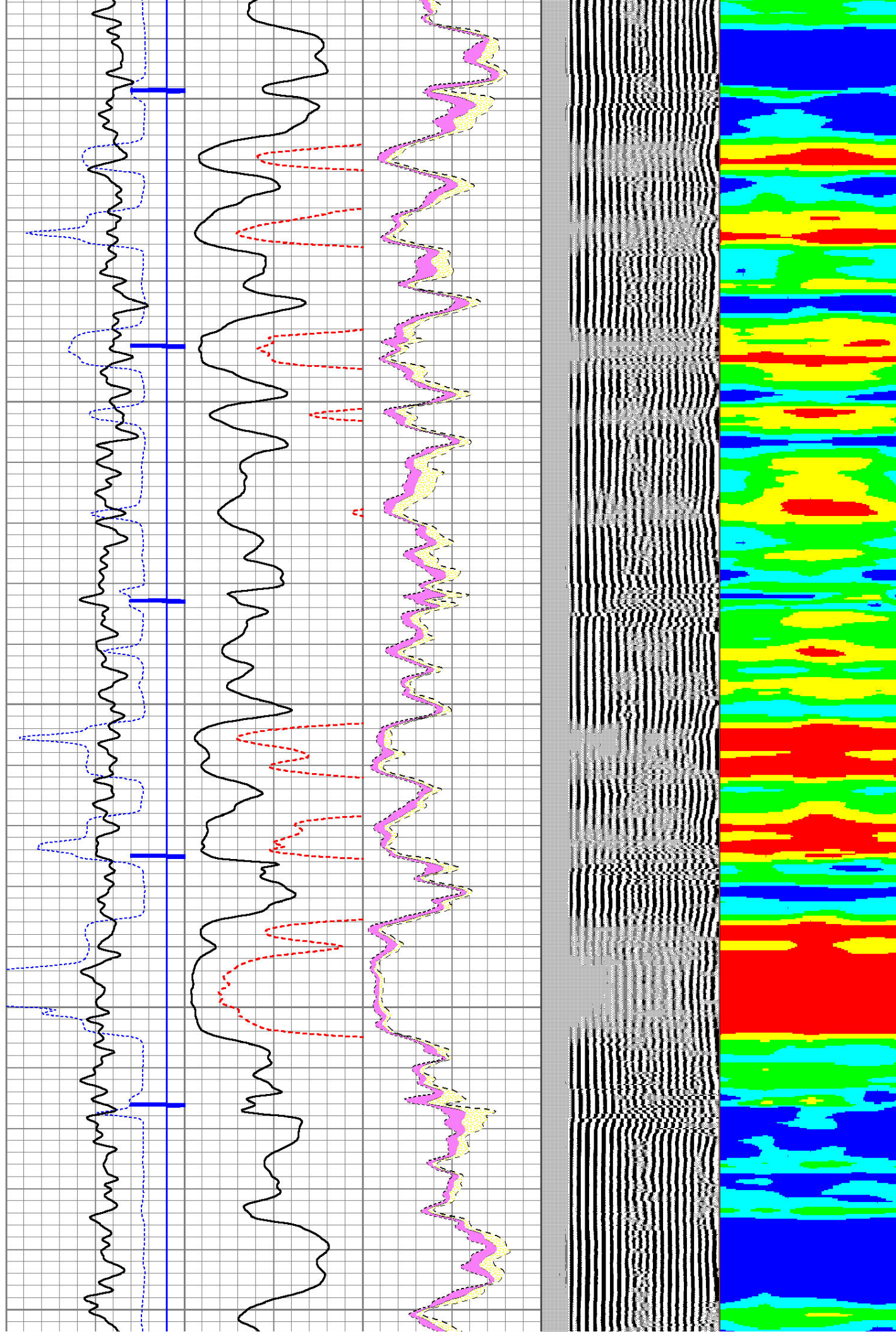
2650

2700

2750

2800

2850

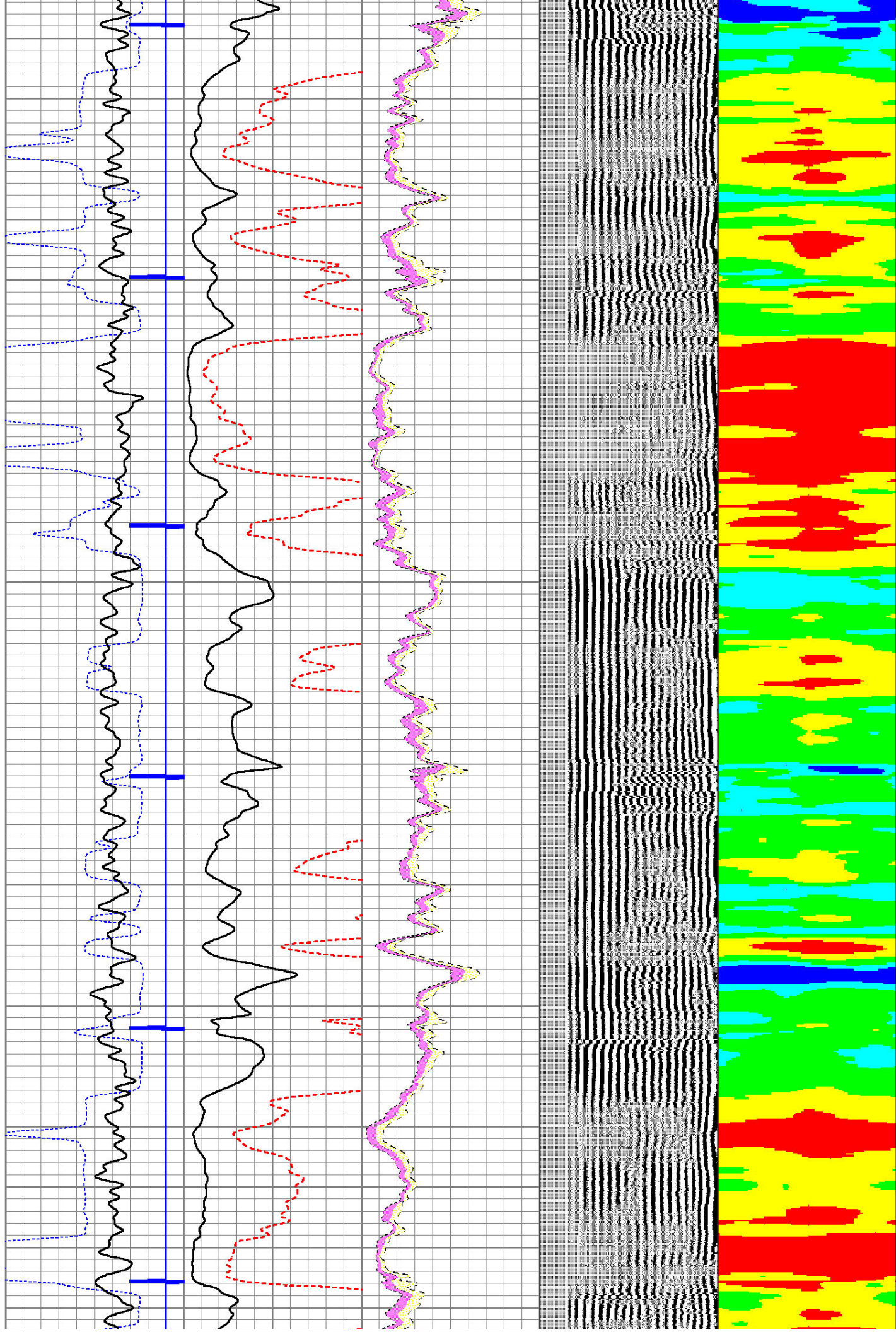


2900

2950

3000

3050

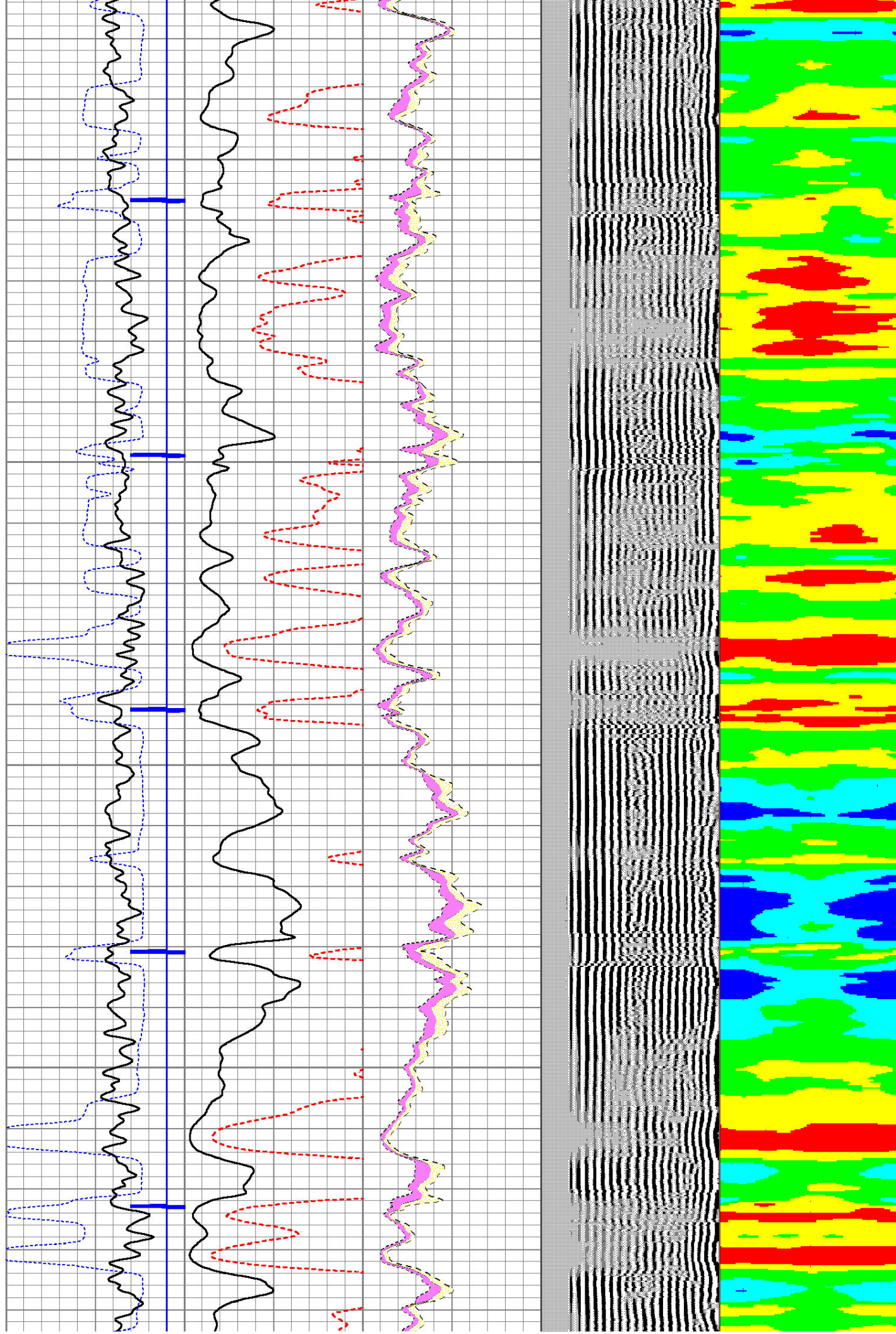


3100

3150

3200

3250



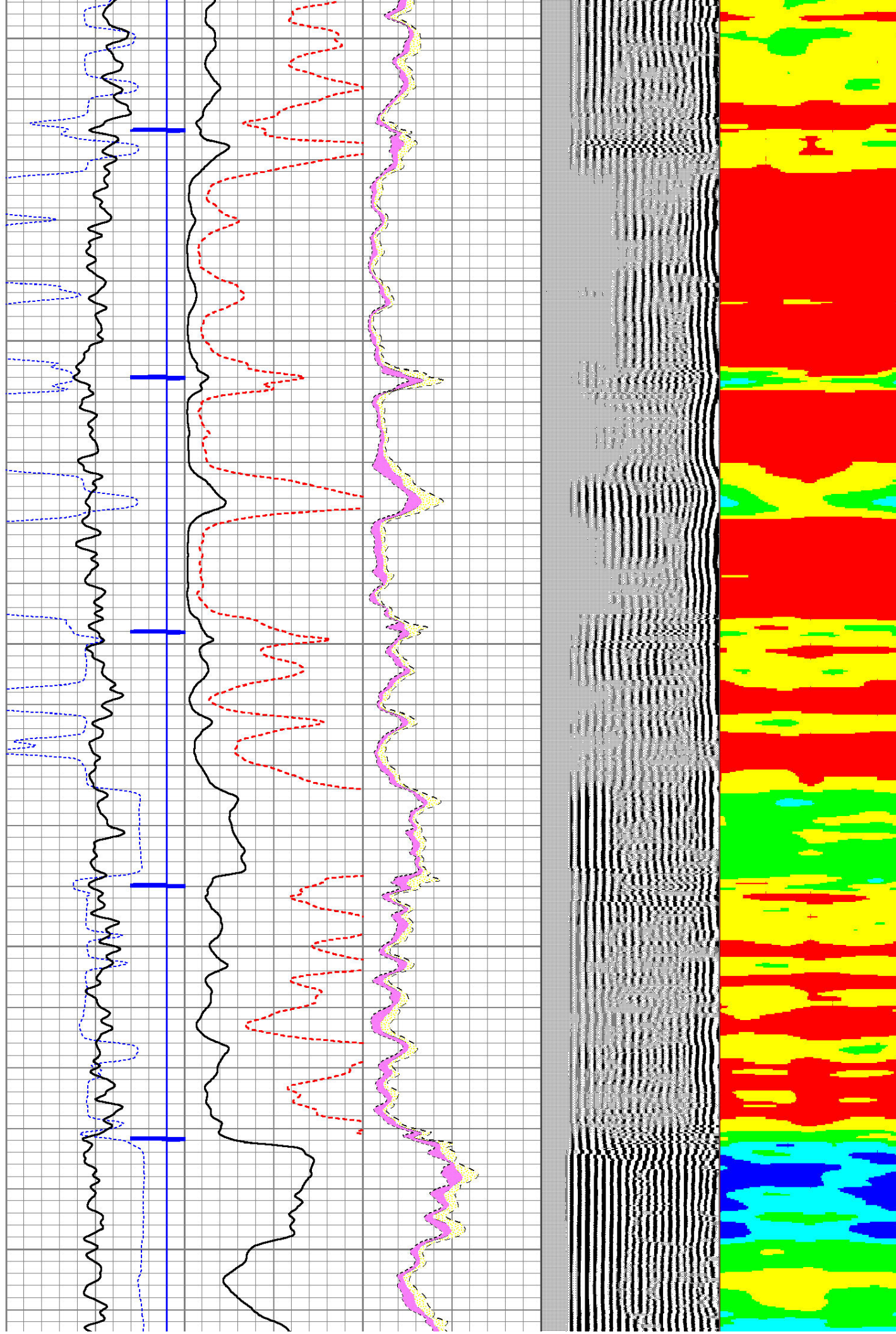
3300

3350

3400

3450

3500

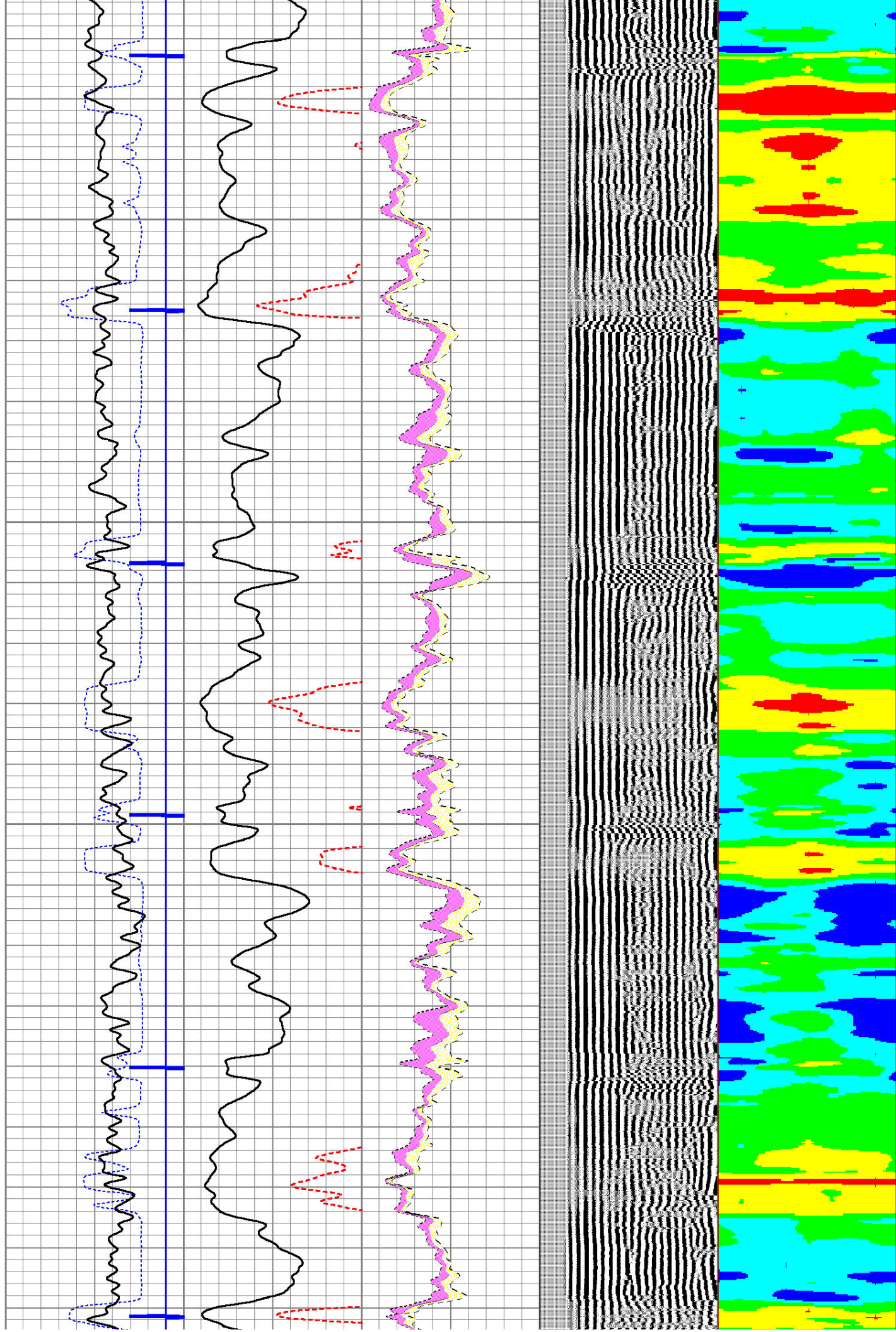


3550

3600

3650

3700



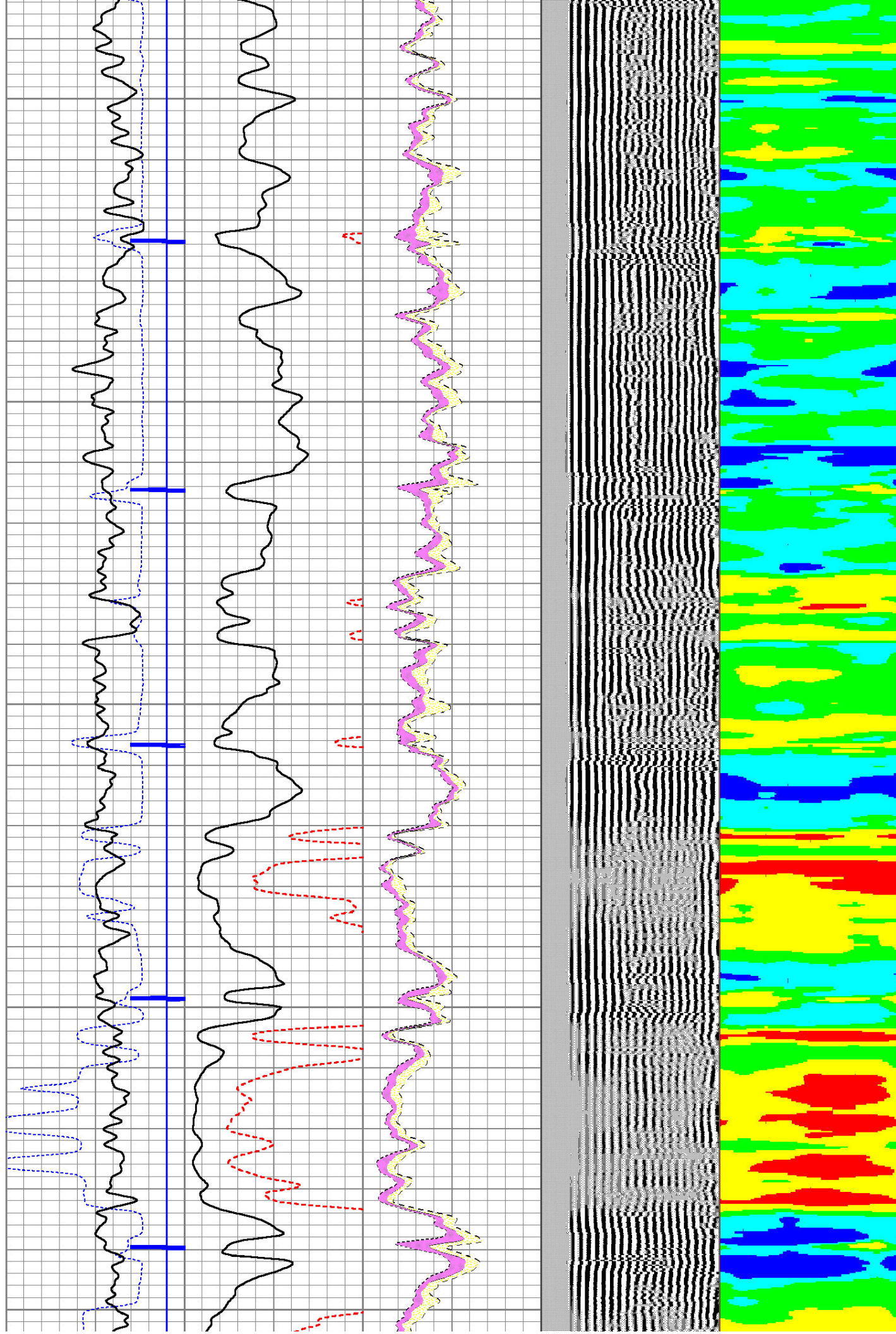
3750

3800

3850

3900

3950

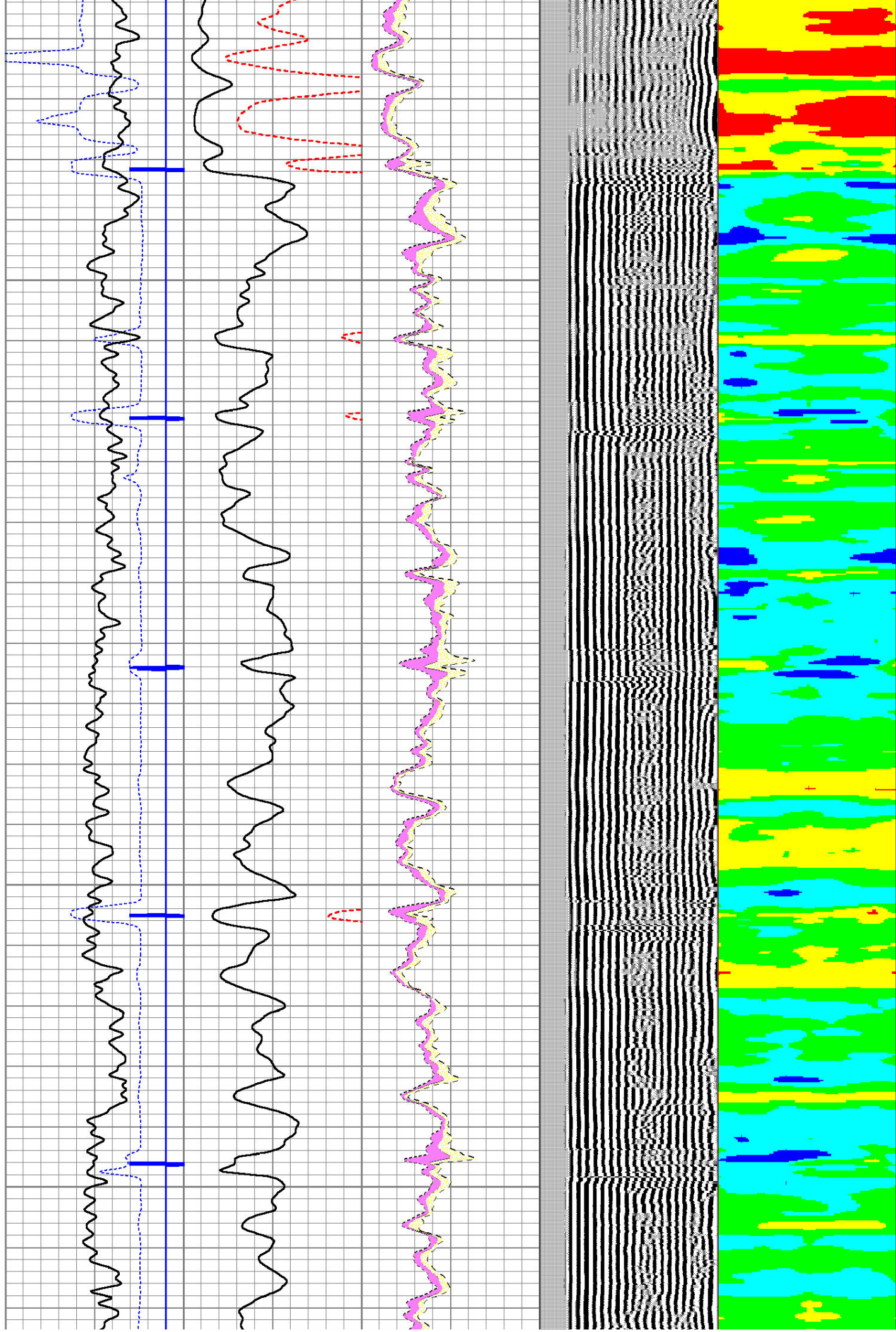


4000

4050

4100

4150

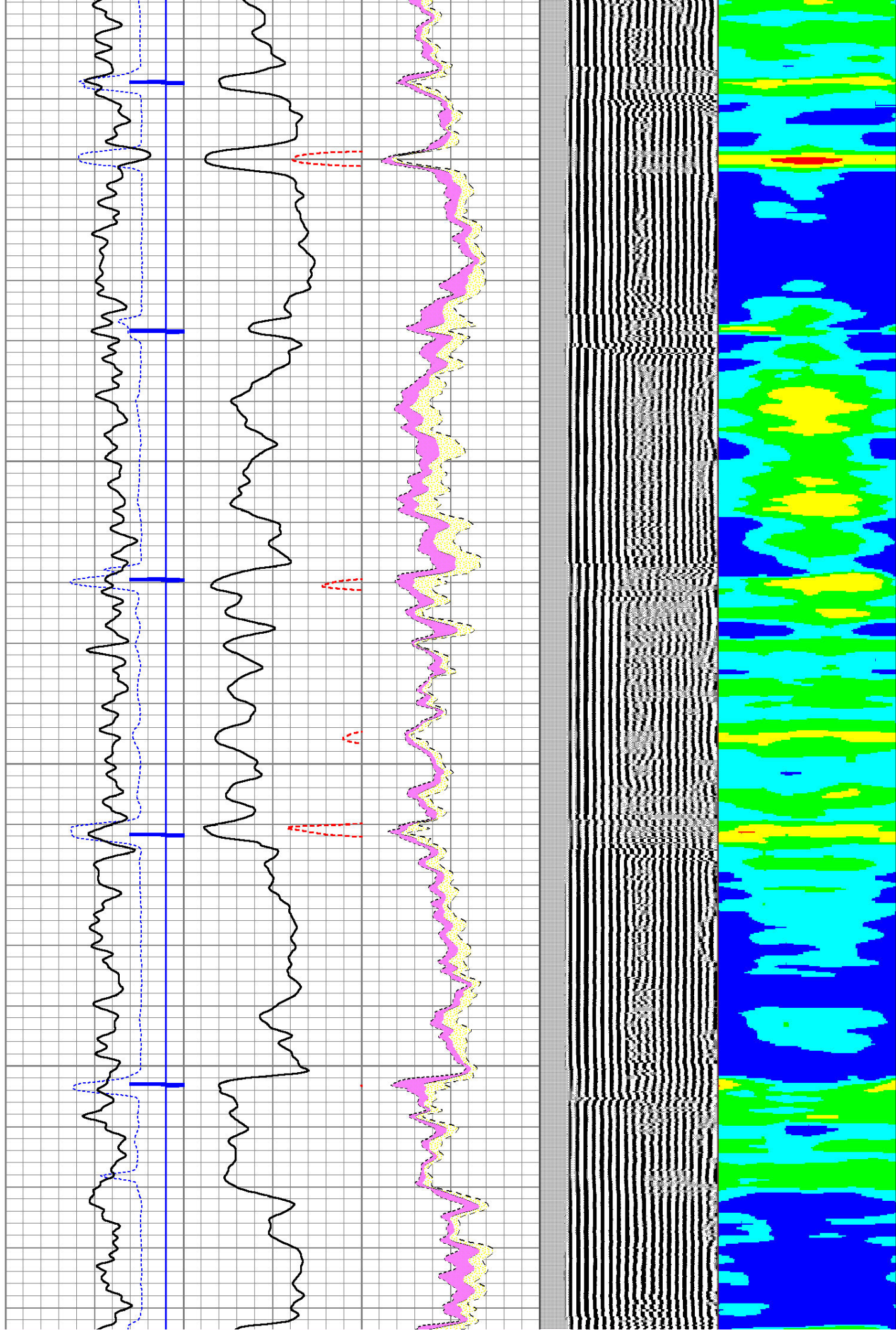


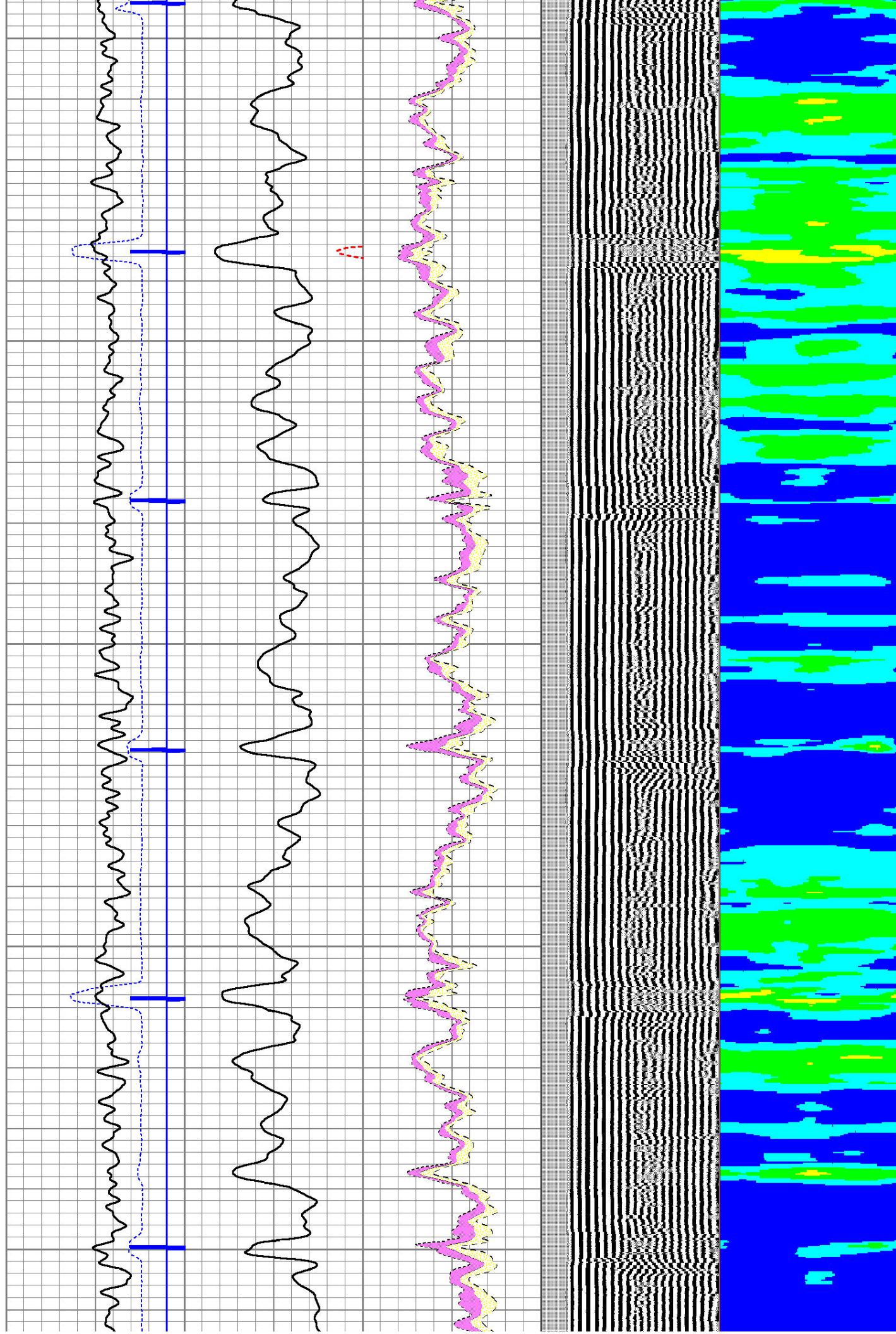
4200

4250

4300

4350



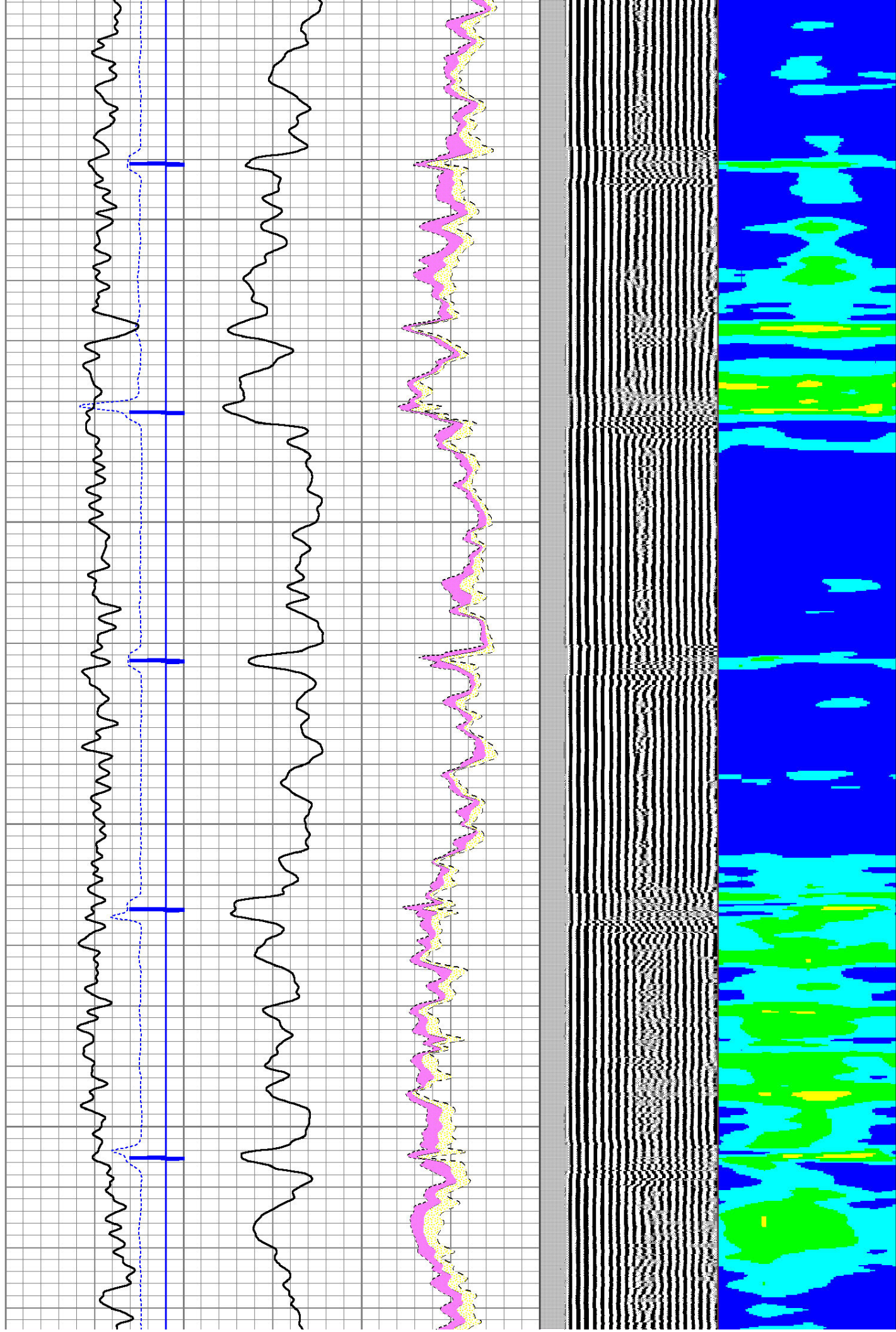


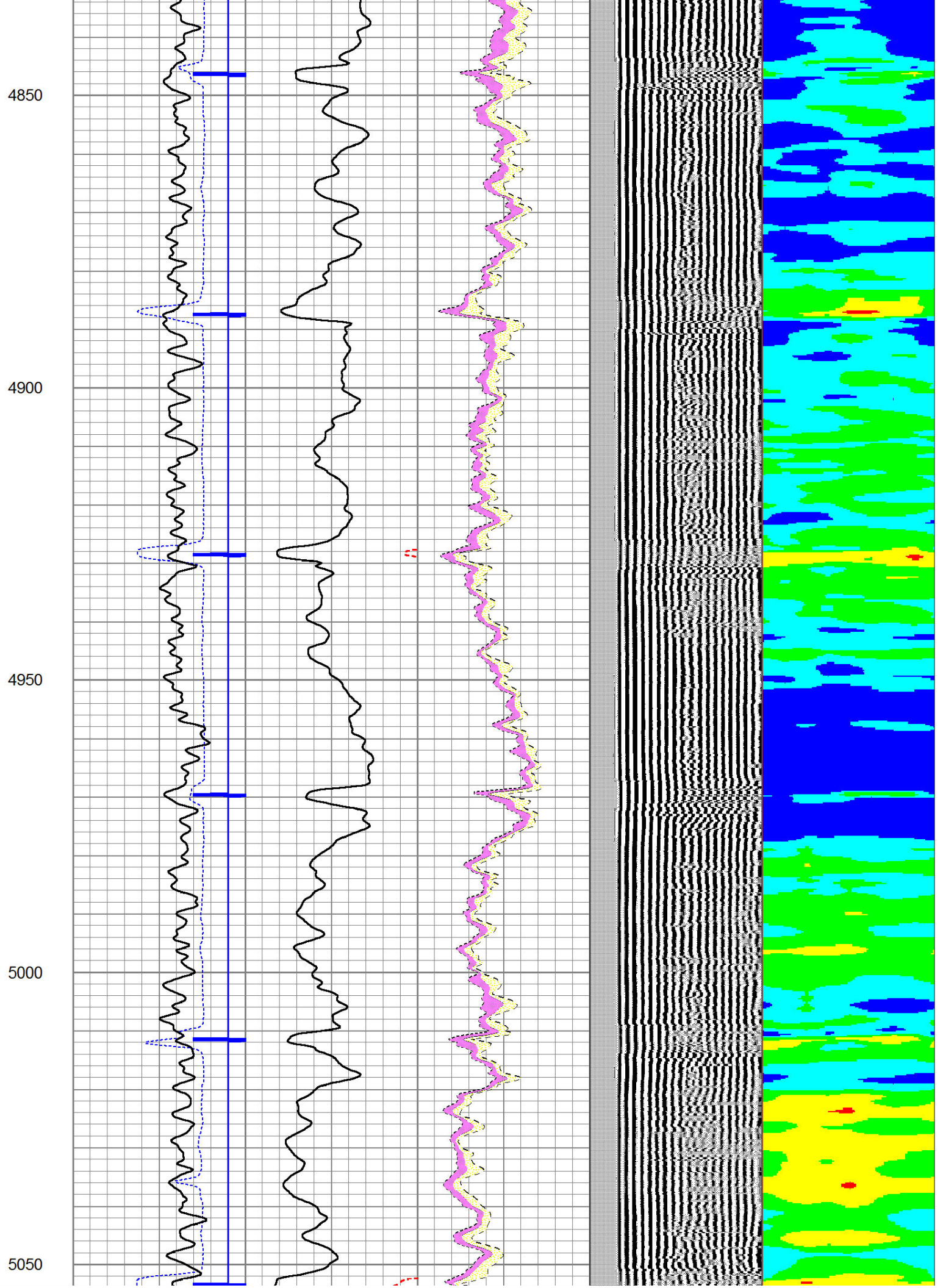
4650

4700

4750

4800



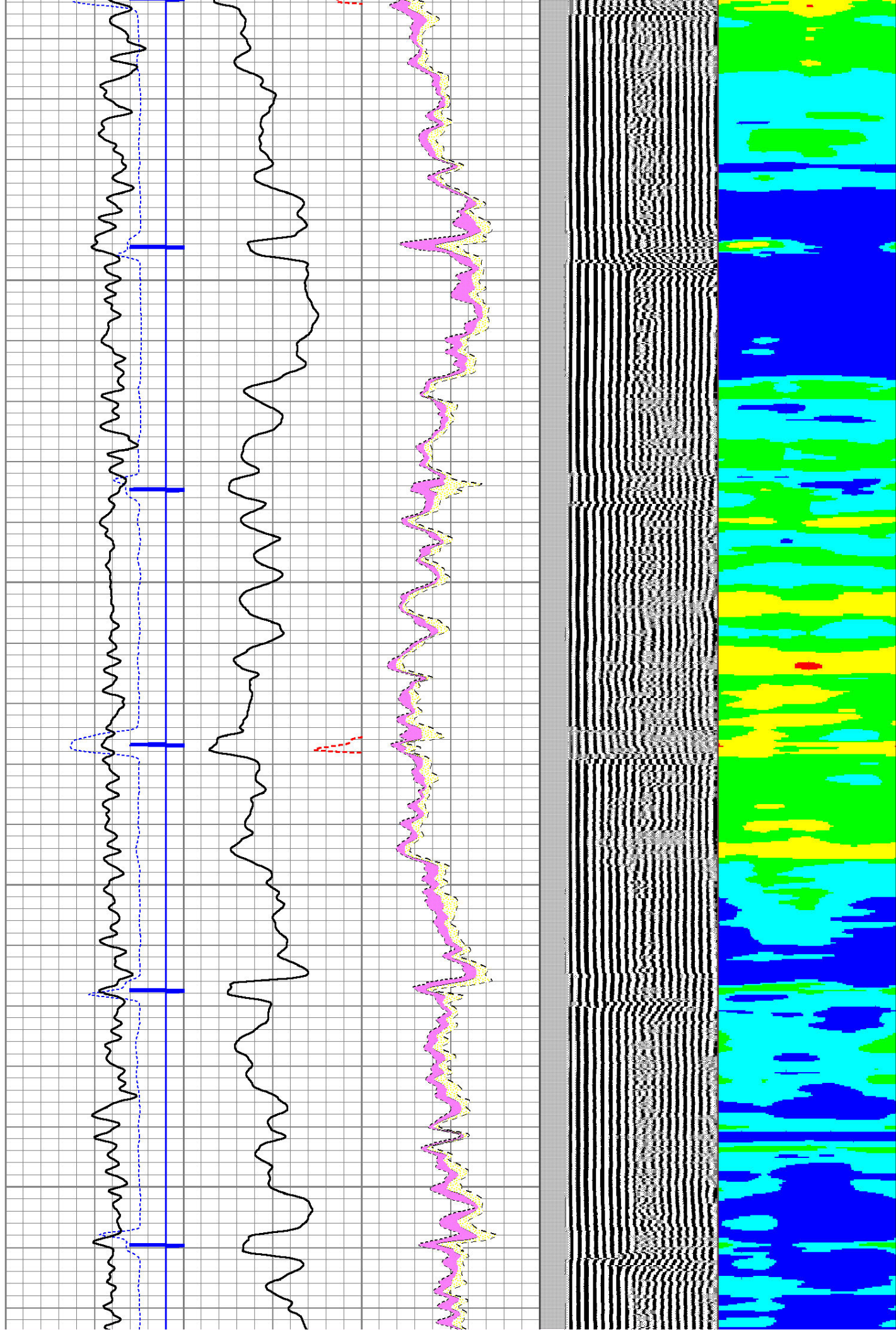


5100

5150

5200

5250

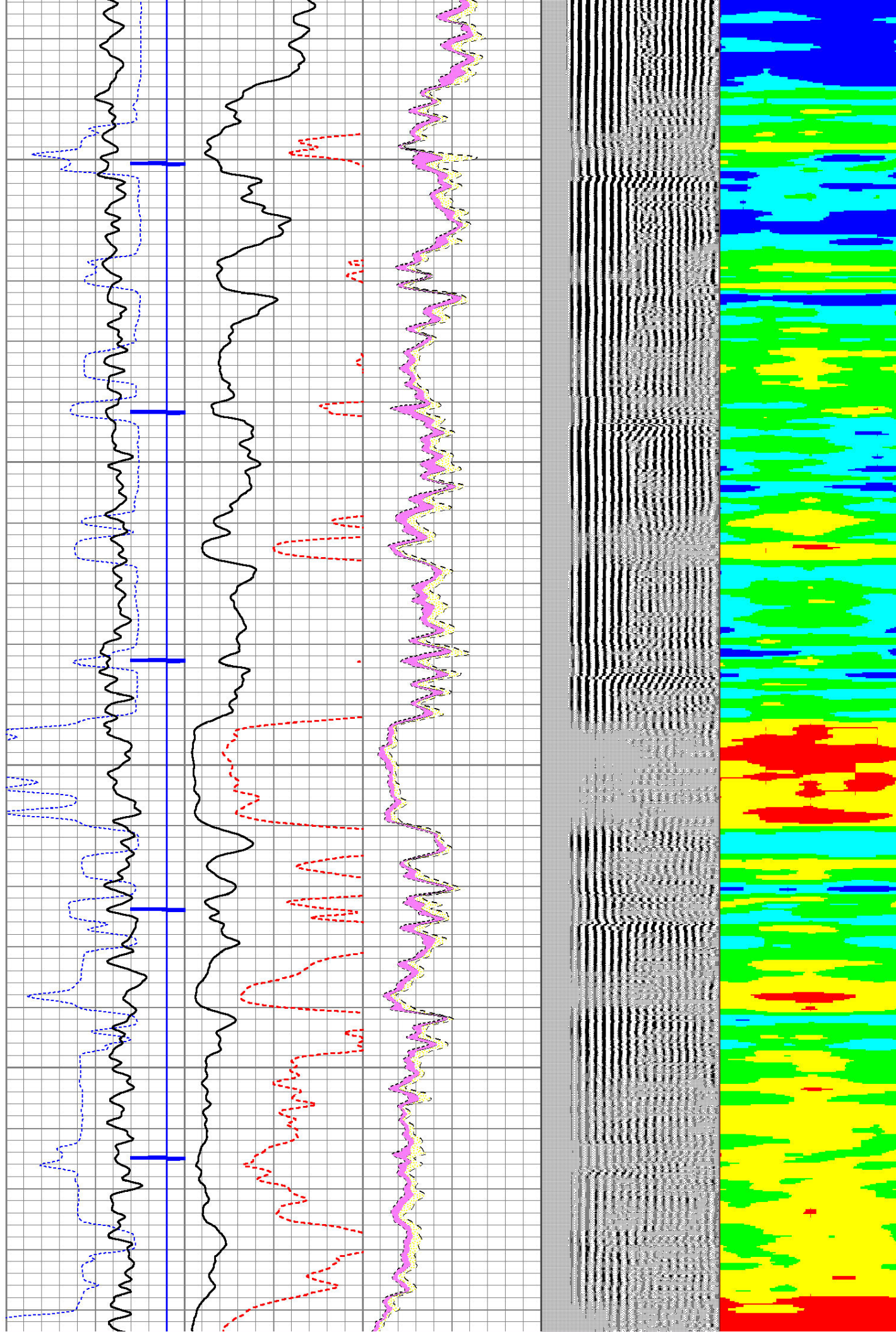


5300

5350

5400

5450



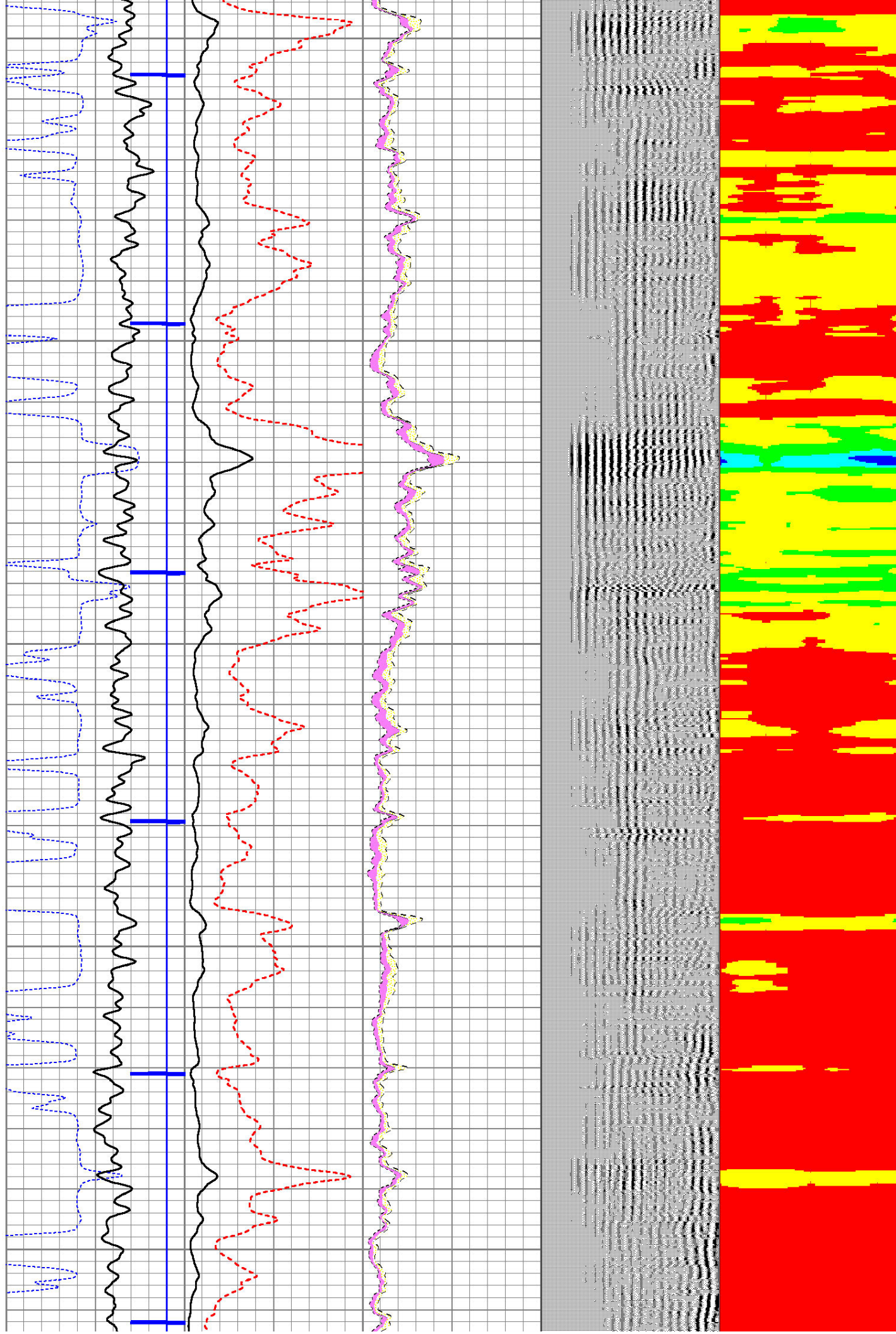
5500

5550

5600

5650

5700

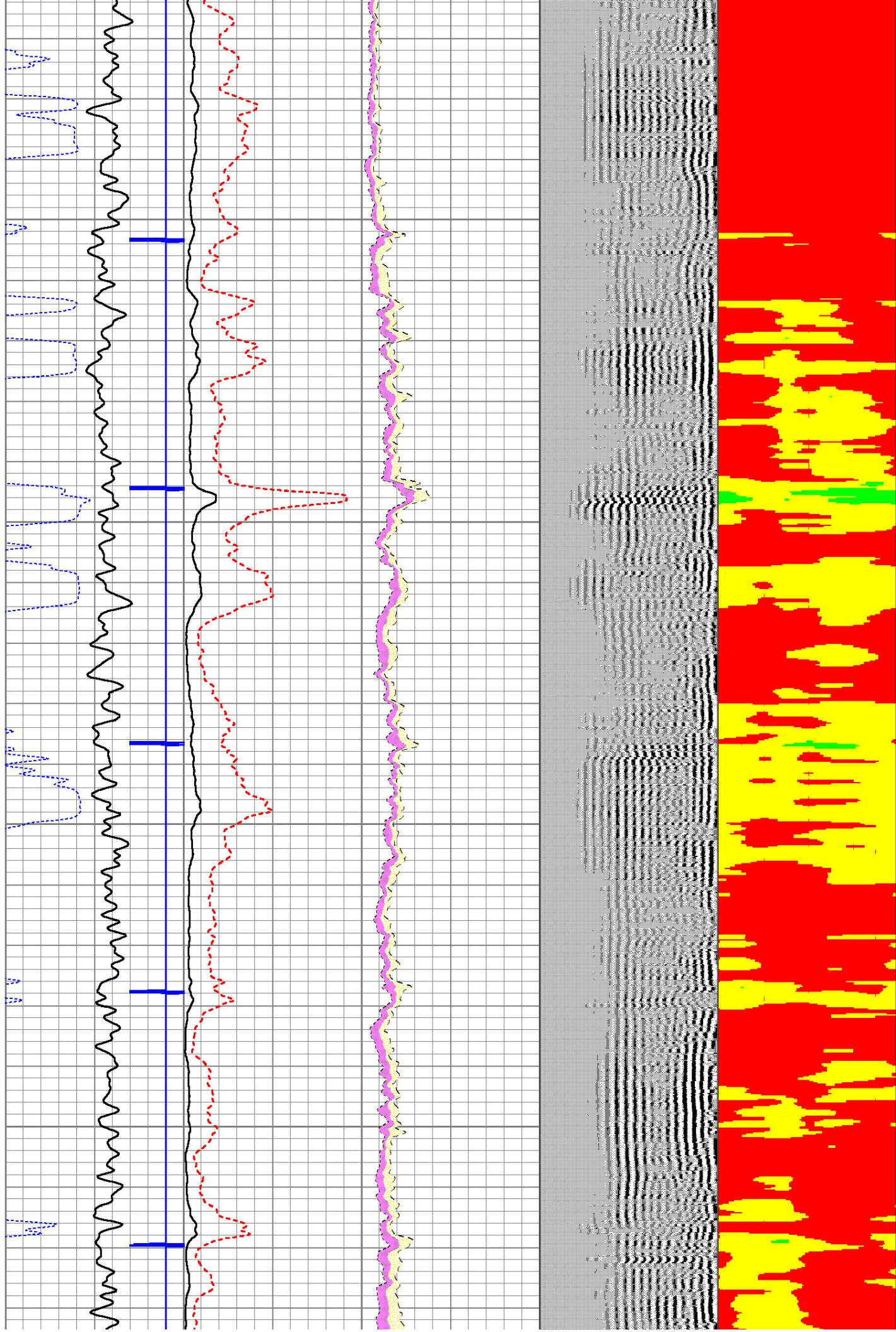


5750

5800

5850

5900



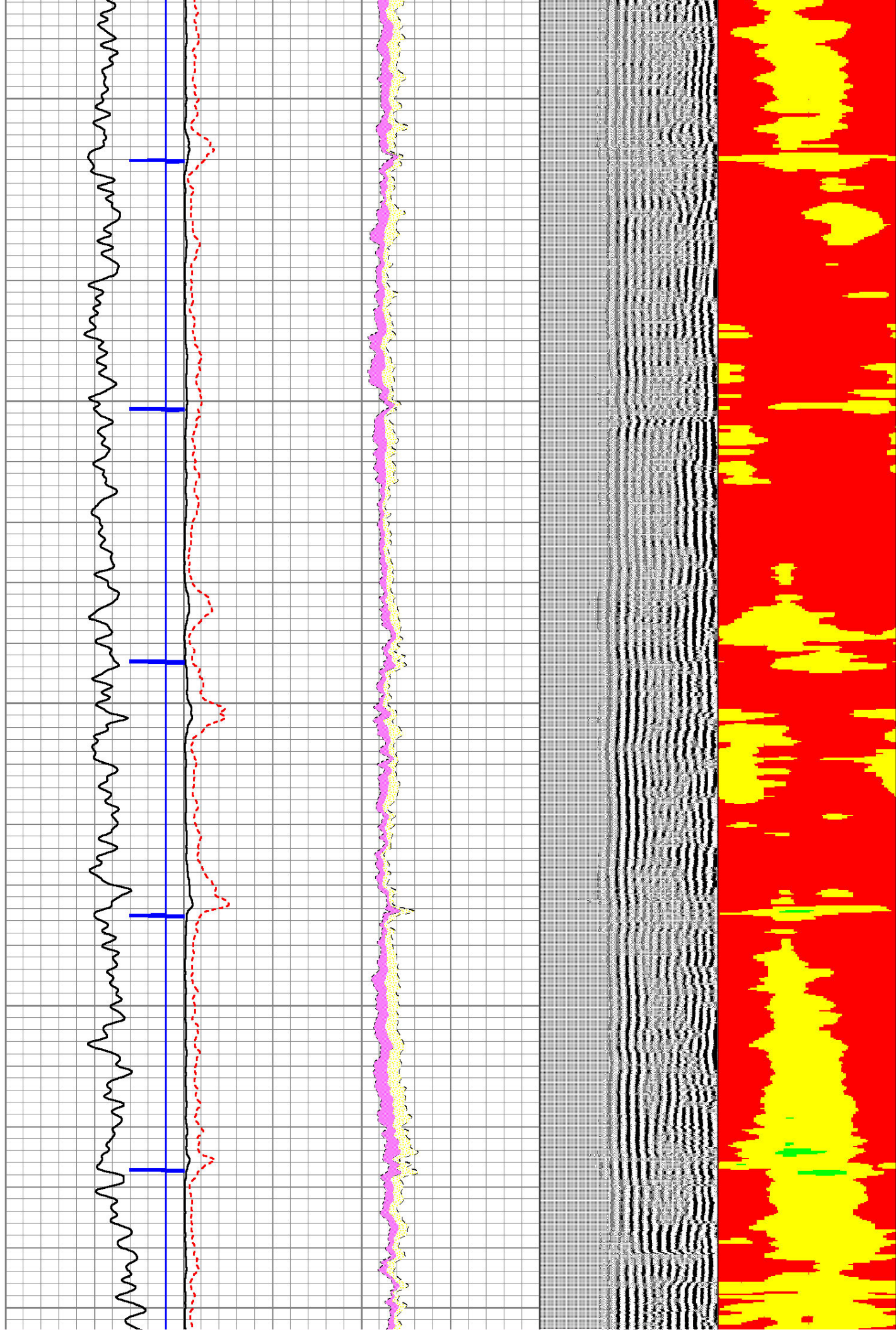
5950

6000

6050

6100

6150

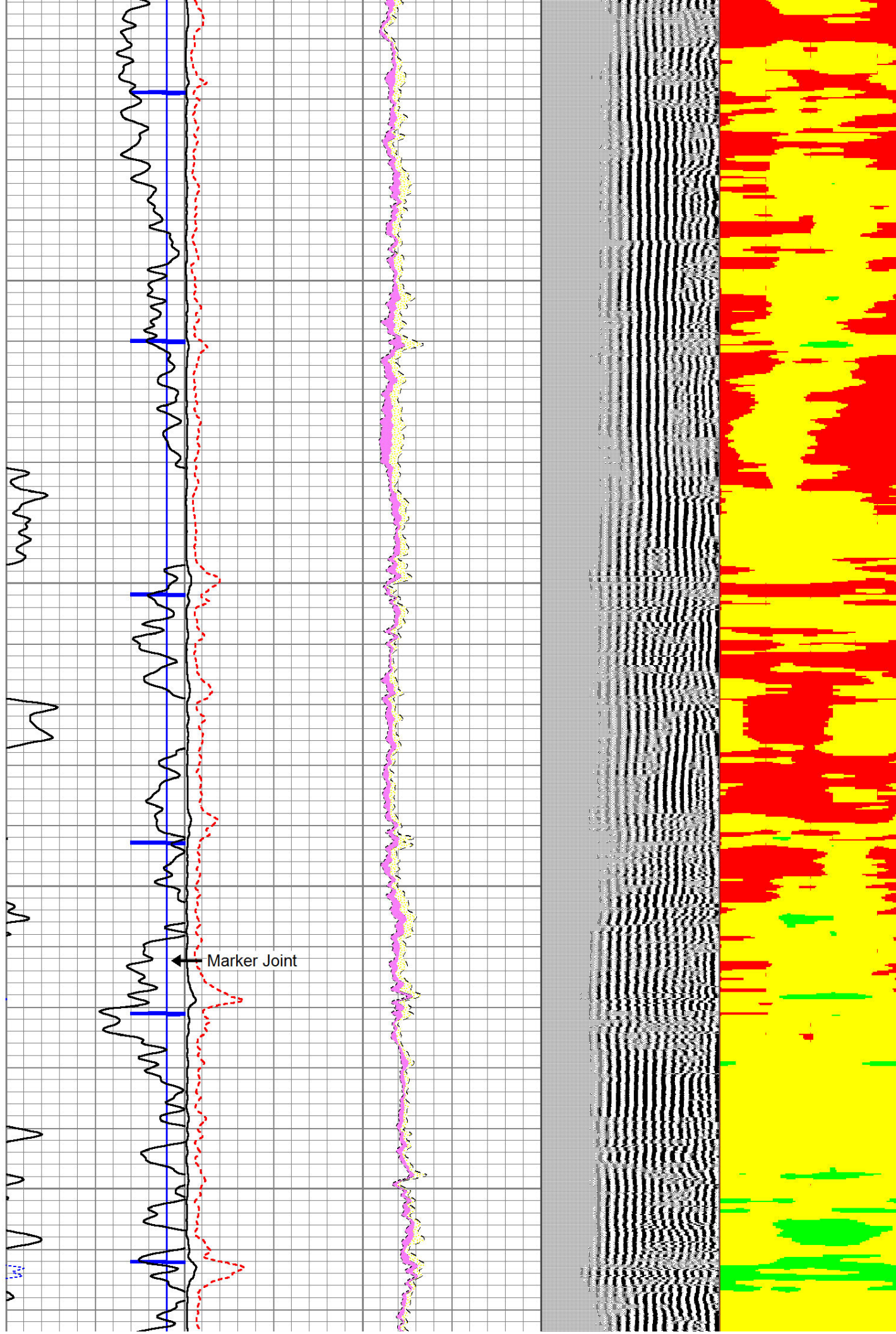


6200

6250

6300

6350



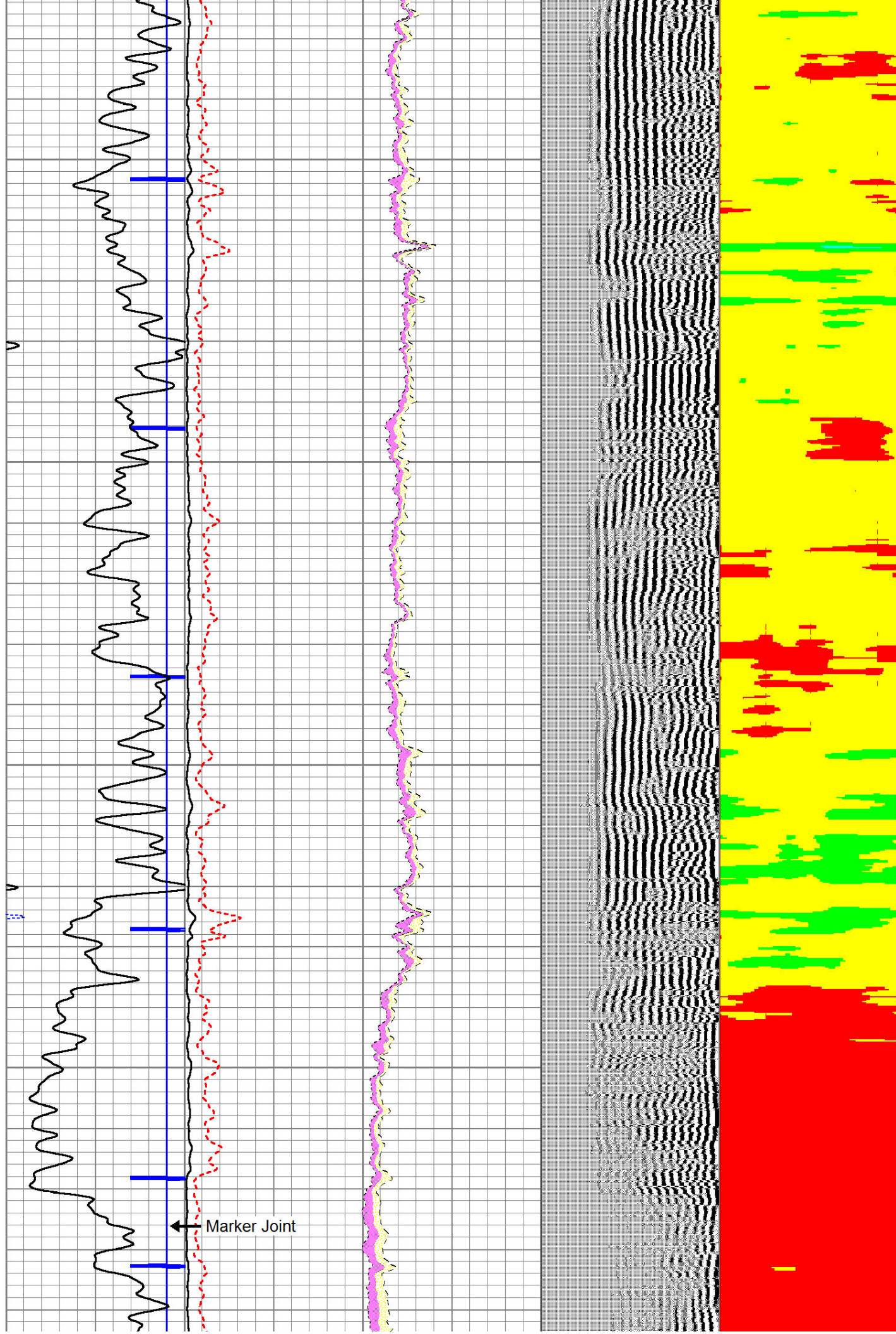
6400

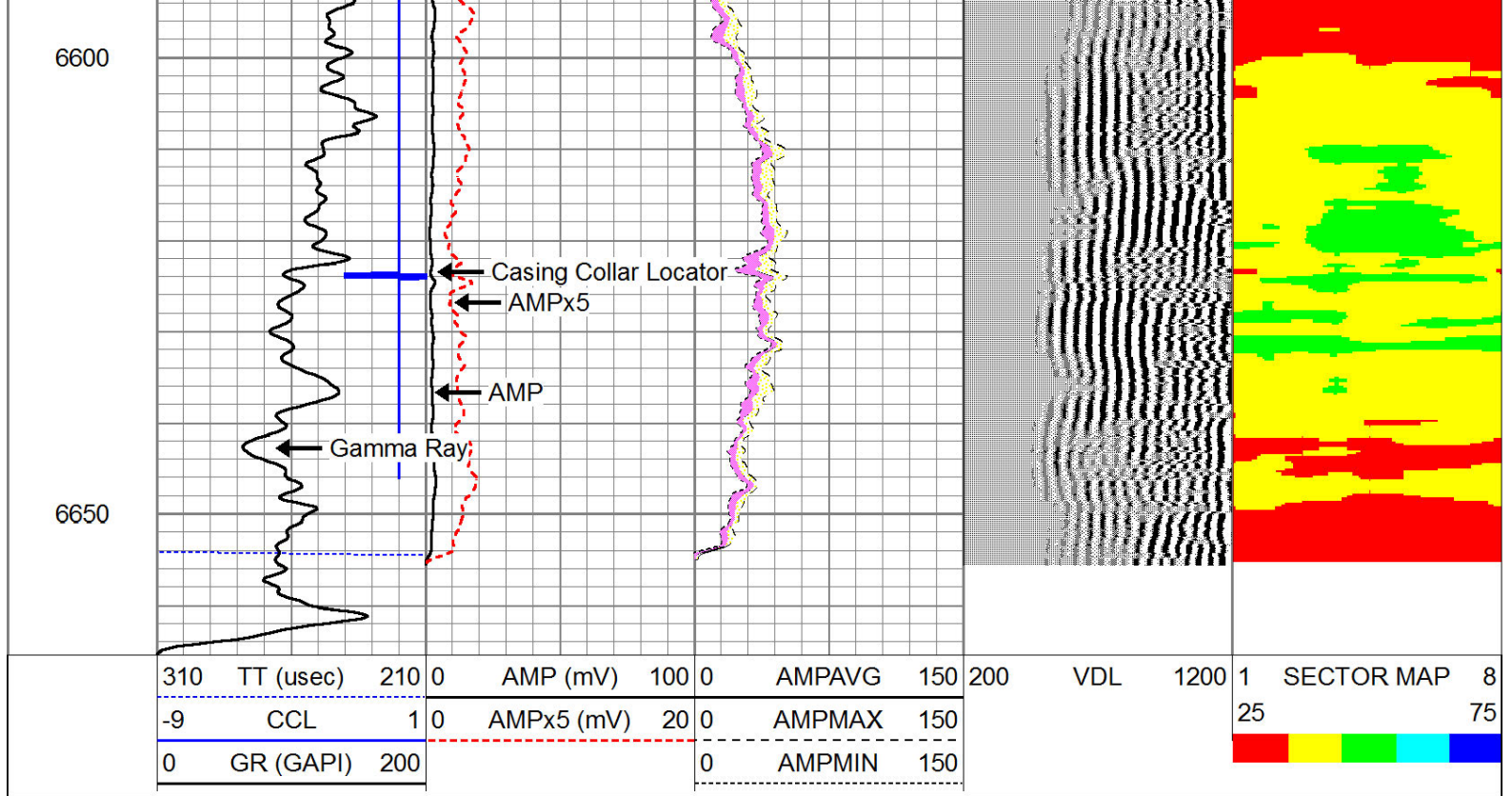
6450

6500

6550

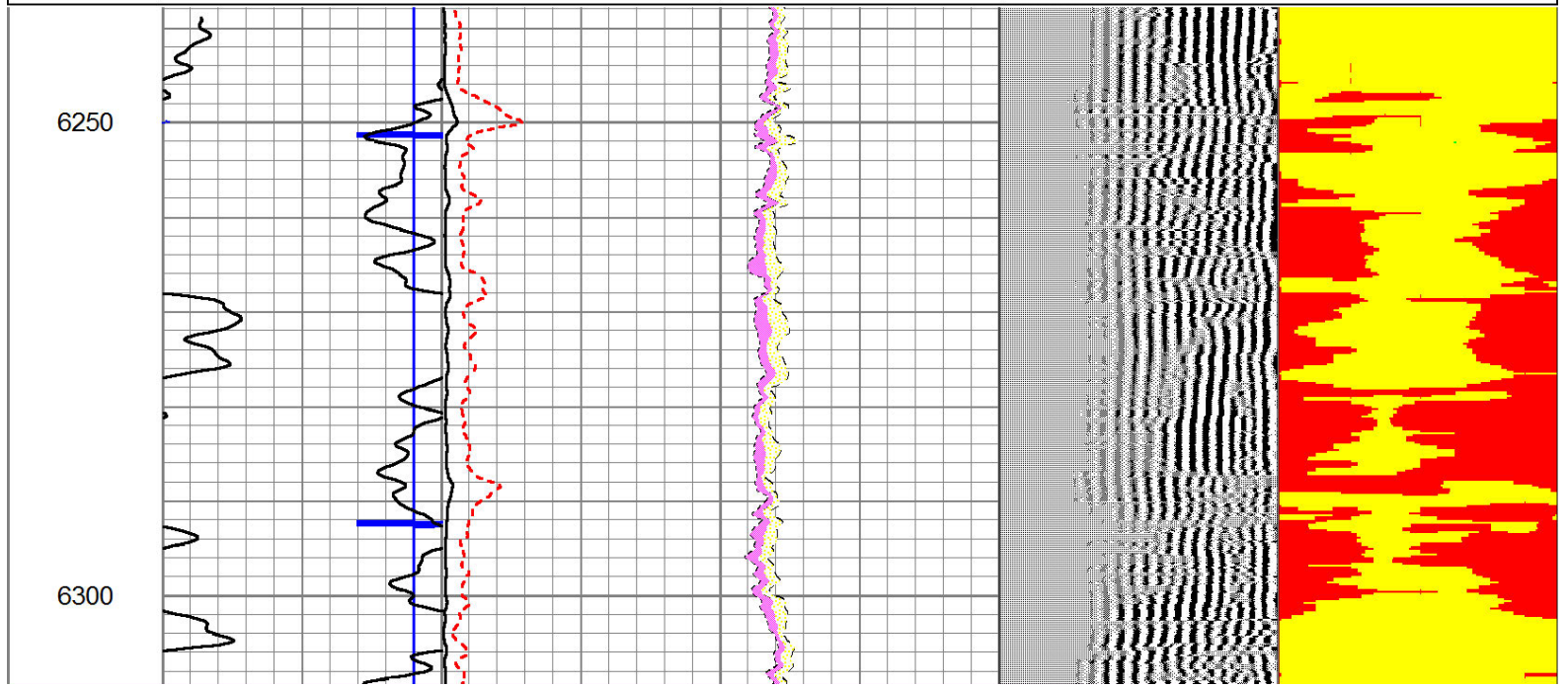
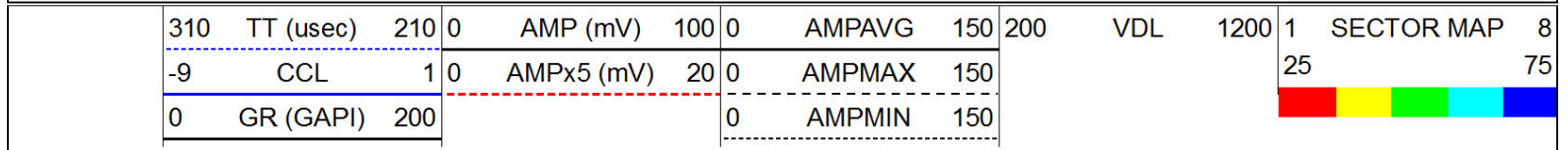
Marker Joint





Repeat Pass

Database File: rothe 44-30.db
 Dataset Pathname: pass1
 Presentation Format: scbl02
 Dataset Creation: Fri Nov 18 18:17:30 2011 by Log Std Casedhole 09061
 Charted by: Depth in Feet scaled 1:240



6350

6400

6450

6500

