

# KGH Operating

Meagher #3-1H  
Sec 03 T01S R104W  
Rio Blanco Co., CO

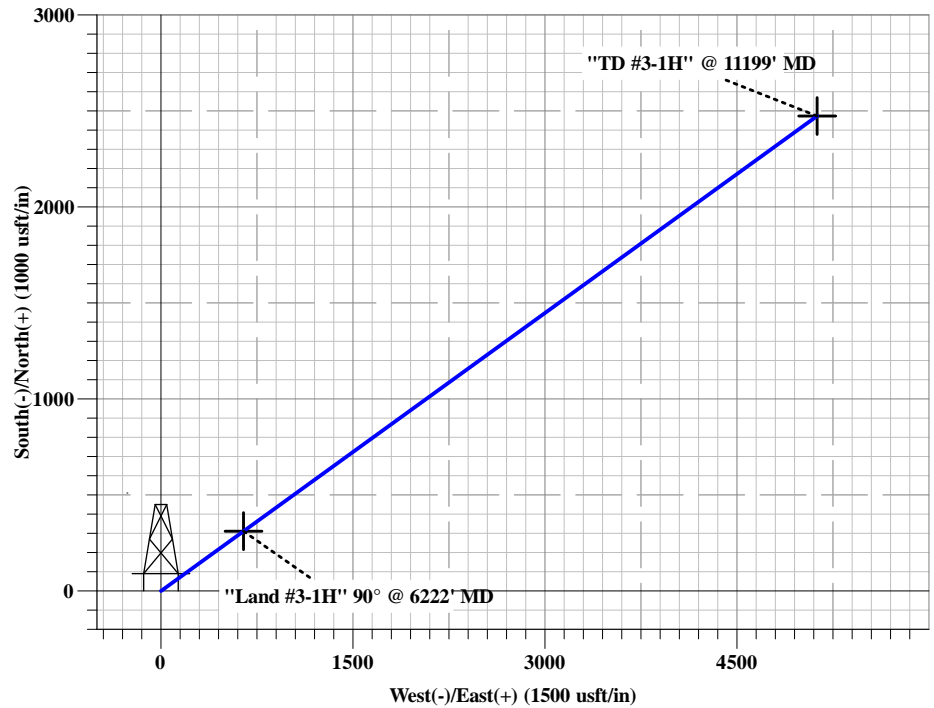
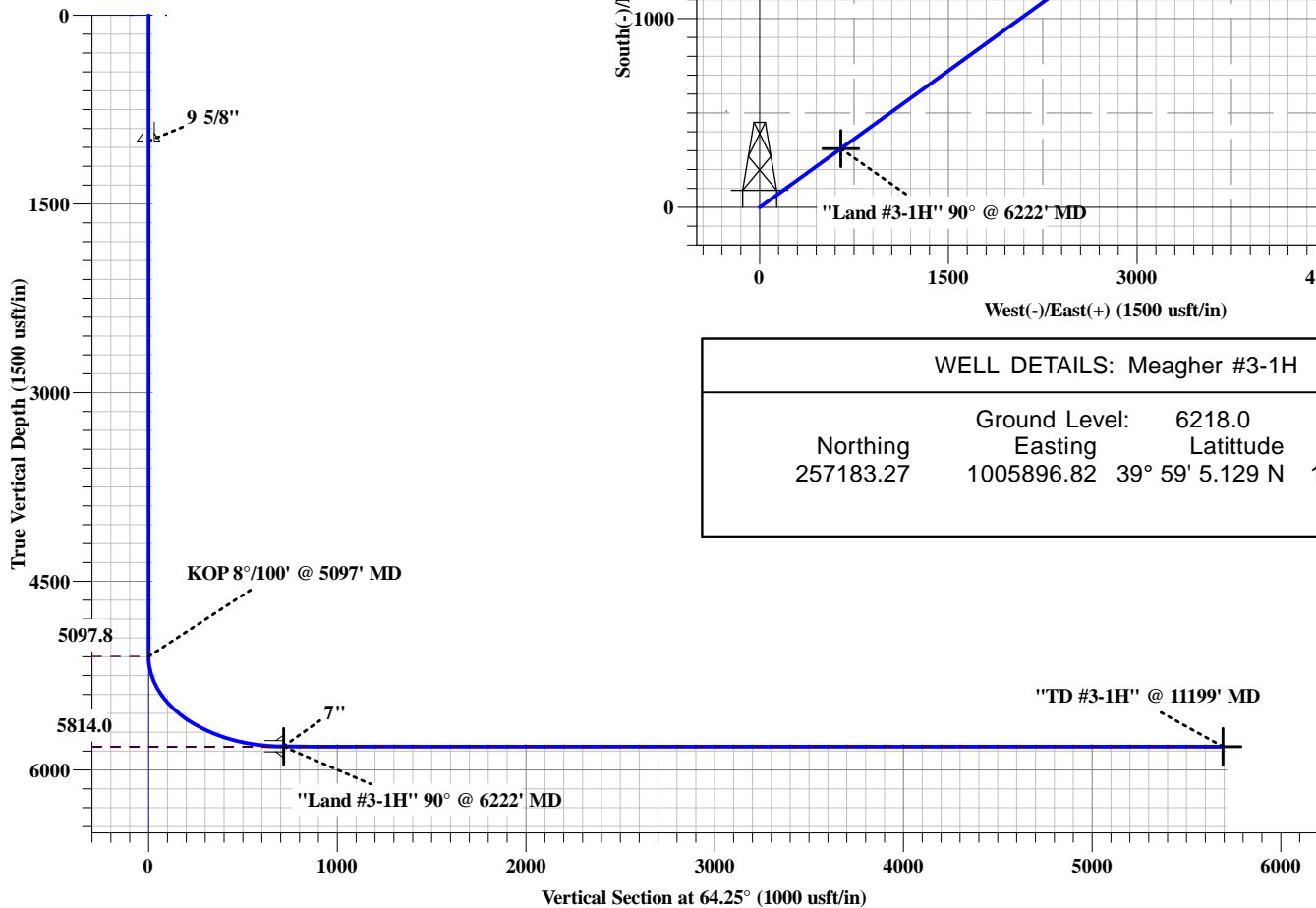
GE: 6218' / KB: 12'

WELLBORE TARGET DETAILS (MAP CO-ORDINATES)

Name	TVD	+N/-S	+E/-W	Northing	Easting	Shape
BHL 3-1H	5814.0	2473.5	5127.6	259449.7010	11119.25	Point
Land 3-1H	5814.0	311.2	645.1	257468.4210	06553.85	Point

CASING DETAILS

TVD	MD	Size
1000.0	1000.0	9-5/8
5814.0	6222.0	7



WELL DETAILS: Meagher #3-1H

	Ground Level:	6218.0	
Northing	Easting	Latitude	Longitude
257183.27	1005896.82	39° 59' 5.129 N	109° 2' 54.539 W

SECTION DETAILS

MD	Inc	Azi	TVD	+N/-S	+E/-W	Dleg	TFace	VSect	Target
0.0	0.00	0.00	0.0	0.0	0.0	0.00	0.00	0.0	
5097.8	0.00	0.00	5097.8	0.0	0.0	0.00	0.00	0.0	
6222.8	90.00	64.25	5814.0	311.2	645.1	8.00	64.25	716.2	
11199.6	90.00	64.25	5814.0	2473.5	5127.6	0.00	0.00	5693.0	BHL 3-1H

Plan: Design #1 (Meagher #3-1H/Wellbore #1)

Created By: Breck Enoch

Date: 14-Dec-2011

# **KGH Operating**

**Rio Blanco Co., CO  
Sec 03 T01S R104W  
Meagher #3-1H**

**Wellbore #1**

**Plan: Design #1**

## **Standard Planning Report**

**14 December, 2011**

## Planning Report

<b>Database:</b>	EDM 5000.1 Single User Db	<b>Local Co-ordinate Reference:</b>	Site Sec 03 T01S R104W
<b>Company:</b>	KGH Operating	<b>TVD Reference:</b>	WELL @ 6230.0usft (Original Well Elev)
<b>Project:</b>	Rio Blanco Co., CO	<b>MD Reference:</b>	WELL @ 6230.0usft (Original Well Elev)
<b>Site:</b>	Sec 03 T01S R104W	<b>North Reference:</b>	True
<b>Well:</b>	Meagher #3-1H	<b>Survey Calculation Method:</b>	Minimum Curvature
<b>Wellbore:</b>	Wellbore #1		
<b>Design:</b>	Design #1		

<b>Project</b>	Rio Blanco Co., CO		
<b>Map System:</b>	US State Plane 1927 (Exact solution)	<b>System Datum:</b>	Mean Sea Level
<b>Geo Datum:</b>	NAD 1927 (NADCON CONUS)		
<b>Map Zone:</b>	Colorado North 501		

<b>Site</b>	Sec 03 T01S R104W			
<b>Site Position:</b>		<b>Northing:</b>	257,183.27 usft	<b>Latitude:</b> 39° 59' 5.129 N
<b>From:</b>	Lat/Long	<b>Easting:</b>	1,005,896.82 usft	<b>Longitude:</b> 109° 2' 54.539 W
<b>Position Uncertainty:</b>	0.0 usft	<b>Slot Radius:</b>	13-3/16 "	<b>Grid Convergence:</b> -2.29 °

<b>Well</b>	Meagher #3-1H			
<b>Well Position</b>	<b>+N/-S</b>	0.0 usft	<b>Northing:</b>	257,183.27 usft
	<b>+E/-W</b>	0.0 usft	<b>Easting:</b>	1,005,896.82 usft
<b>Position Uncertainty</b>	0.0 usft		<b>Wellhead Elevation:</b>	<b>Ground Level:</b> 6,218.0 usft

<b>Wellbore</b>	Wellbore #1				
<b>Magnetics</b>	<b>Model Name</b>	<b>Sample Date</b>	<b>Declination (°)</b>	<b>Dip Angle (°)</b>	<b>Field Strength (nT)</b>
	IGRF2010	12/14/2011	10.82	65.93	52,323

<b>Design</b>	Design #1			
<b>Audit Notes:</b>				
<b>Version:</b>	<b>Phase:</b>	PROTOTYPE	<b>Tie On Depth:</b>	0.0
<b>Vertical Section:</b>	<b>Depth From (TVD) (usft)</b>	<b>+N/-S (usft)</b>	<b>+E/-W (usft)</b>	<b>Direction (°)</b>
	0.0	0.0	0.0	64.25

<b>Plan Sections</b>										
Measured Depth (usft)	Inclination (°)	Azimuth (°)	Vertical Depth (usft)	+N/-S (usft)	+E/-W (usft)	Dogleg Rate (°/100usft)	Build Rate (°/100usft)	Turn Rate (°/100usft)	TFO (°)	Target
0.0	0.00	0.00	0.0	0.0	0.0	0.00	0.00	0.00	0.00	
5,097.8	0.00	0.00	5,097.8	0.0	0.0	0.00	0.00	0.00	0.00	
6,222.8	90.00	64.25	5,814.0	311.2	645.1	8.00	8.00	0.00	64.25	
11,199.6	90.00	64.25	5,814.0	2,473.5	5,127.6	0.00	0.00	0.00	0.00	BHL 3-1H

# Planning Report

<b>Database:</b>	EDM 5000.1 Single User Db	<b>Local Co-ordinate Reference:</b>	Site Sec 03 T01S R104W
<b>Company:</b>	KGH Operating	<b>TVD Reference:</b>	WELL @ 6230.0usft (Original Well Elev)
<b>Project:</b>	Rio Blanco Co., CO	<b>MD Reference:</b>	WELL @ 6230.0usft (Original Well Elev)
<b>Site:</b>	Sec 03 T01S R104W	<b>North Reference:</b>	True
<b>Well:</b>	Meagher #3-1H	<b>Survey Calculation Method:</b>	Minimum Curvature
<b>Wellbore:</b>	Wellbore #1		
<b>Design:</b>	Design #1		

Planned Survey									
Measured Depth (usft)	Inclination (°)	Azimuth (°)	Vertical Depth (usft)	+N/-S (usft)	+E/-W (usft)	Vertical Section (usft)	Dogleg Rate (°/100usft)	Build Rate (°/100usft)	Turn Rate (°/100usft)
0.0	0.00	0.00	0.0	0.0	0.0	0.0	0.00	0.00	0.00
100.0	0.00	0.00	100.0	0.0	0.0	0.0	0.00	0.00	0.00
200.0	0.00	0.00	200.0	0.0	0.0	0.0	0.00	0.00	0.00
300.0	0.00	0.00	300.0	0.0	0.0	0.0	0.00	0.00	0.00
400.0	0.00	0.00	400.0	0.0	0.0	0.0	0.00	0.00	0.00
500.0	0.00	0.00	500.0	0.0	0.0	0.0	0.00	0.00	0.00
600.0	0.00	0.00	600.0	0.0	0.0	0.0	0.00	0.00	0.00
700.0	0.00	0.00	700.0	0.0	0.0	0.0	0.00	0.00	0.00
800.0	0.00	0.00	800.0	0.0	0.0	0.0	0.00	0.00	0.00
900.0	0.00	0.00	900.0	0.0	0.0	0.0	0.00	0.00	0.00
1,000.0	0.00	0.00	1,000.0	0.0	0.0	0.0	0.00	0.00	0.00
1,100.0	0.00	0.00	1,100.0	0.0	0.0	0.0	0.00	0.00	0.00
1,200.0	0.00	0.00	1,200.0	0.0	0.0	0.0	0.00	0.00	0.00
1,300.0	0.00	0.00	1,300.0	0.0	0.0	0.0	0.00	0.00	0.00
1,400.0	0.00	0.00	1,400.0	0.0	0.0	0.0	0.00	0.00	0.00
1,500.0	0.00	0.00	1,500.0	0.0	0.0	0.0	0.00	0.00	0.00
1,600.0	0.00	0.00	1,600.0	0.0	0.0	0.0	0.00	0.00	0.00
1,700.0	0.00	0.00	1,700.0	0.0	0.0	0.0	0.00	0.00	0.00
1,800.0	0.00	0.00	1,800.0	0.0	0.0	0.0	0.00	0.00	0.00
1,900.0	0.00	0.00	1,900.0	0.0	0.0	0.0	0.00	0.00	0.00
2,000.0	0.00	0.00	2,000.0	0.0	0.0	0.0	0.00	0.00	0.00
2,100.0	0.00	0.00	2,100.0	0.0	0.0	0.0	0.00	0.00	0.00
2,200.0	0.00	0.00	2,200.0	0.0	0.0	0.0	0.00	0.00	0.00
2,300.0	0.00	0.00	2,300.0	0.0	0.0	0.0	0.00	0.00	0.00
2,400.0	0.00	0.00	2,400.0	0.0	0.0	0.0	0.00	0.00	0.00
2,500.0	0.00	0.00	2,500.0	0.0	0.0	0.0	0.00	0.00	0.00
2,600.0	0.00	0.00	2,600.0	0.0	0.0	0.0	0.00	0.00	0.00
2,700.0	0.00	0.00	2,700.0	0.0	0.0	0.0	0.00	0.00	0.00
2,800.0	0.00	0.00	2,800.0	0.0	0.0	0.0	0.00	0.00	0.00
2,900.0	0.00	0.00	2,900.0	0.0	0.0	0.0	0.00	0.00	0.00
3,000.0	0.00	0.00	3,000.0	0.0	0.0	0.0	0.00	0.00	0.00
3,100.0	0.00	0.00	3,100.0	0.0	0.0	0.0	0.00	0.00	0.00
3,200.0	0.00	0.00	3,200.0	0.0	0.0	0.0	0.00	0.00	0.00
3,300.0	0.00	0.00	3,300.0	0.0	0.0	0.0	0.00	0.00	0.00
3,400.0	0.00	0.00	3,400.0	0.0	0.0	0.0	0.00	0.00	0.00
3,500.0	0.00	0.00	3,500.0	0.0	0.0	0.0	0.00	0.00	0.00
3,600.0	0.00	0.00	3,600.0	0.0	0.0	0.0	0.00	0.00	0.00
3,700.0	0.00	0.00	3,700.0	0.0	0.0	0.0	0.00	0.00	0.00
3,800.0	0.00	0.00	3,800.0	0.0	0.0	0.0	0.00	0.00	0.00
3,900.0	0.00	0.00	3,900.0	0.0	0.0	0.0	0.00	0.00	0.00
4,000.0	0.00	0.00	4,000.0	0.0	0.0	0.0	0.00	0.00	0.00
4,100.0	0.00	0.00	4,100.0	0.0	0.0	0.0	0.00	0.00	0.00
4,200.0	0.00	0.00	4,200.0	0.0	0.0	0.0	0.00	0.00	0.00
4,300.0	0.00	0.00	4,300.0	0.0	0.0	0.0	0.00	0.00	0.00
4,400.0	0.00	0.00	4,400.0	0.0	0.0	0.0	0.00	0.00	0.00
4,500.0	0.00	0.00	4,500.0	0.0	0.0	0.0	0.00	0.00	0.00
4,600.0	0.00	0.00	4,600.0	0.0	0.0	0.0	0.00	0.00	0.00
4,700.0	0.00	0.00	4,700.0	0.0	0.0	0.0	0.00	0.00	0.00
4,800.0	0.00	0.00	4,800.0	0.0	0.0	0.0	0.00	0.00	0.00
4,900.0	0.00	0.00	4,900.0	0.0	0.0	0.0	0.00	0.00	0.00
5,000.0	0.00	0.00	5,000.0	0.0	0.0	0.0	0.00	0.00	0.00
5,097.8	0.00	0.00	5,097.8	0.0	0.0	0.0	0.00	0.00	0.00
5,100.0	0.18	64.25	5,100.0	0.0	0.0	0.0	8.00	8.00	0.00
5,200.0	8.18	64.25	5,199.7	3.2	6.6	7.3	8.00	8.00	0.00

# Planning Report

<b>Database:</b>	EDM 5000.1 Single User Db	<b>Local Co-ordinate Reference:</b>	Site Sec 03 T01S R104W
<b>Company:</b>	KGH Operating	<b>TVD Reference:</b>	WELL @ 6230.0usft (Original Well Elev)
<b>Project:</b>	Rio Blanco Co., CO	<b>MD Reference:</b>	WELL @ 6230.0usft (Original Well Elev)
<b>Site:</b>	Sec 03 T01S R104W	<b>North Reference:</b>	True
<b>Well:</b>	Meagher #3-1H	<b>Survey Calculation Method:</b>	Minimum Curvature
<b>Wellbore:</b>	Wellbore #1		
<b>Design:</b>	Design #1		

Planned Survey									
Measured Depth (usft)	Inclination (°)	Azimuth (°)	Vertical Depth (usft)	+N/-S (usft)	+E/-W (usft)	Vertical Section (usft)	Dogleg Rate (°/100usft)	Build Rate (°/100usft)	Turn Rate (°/100usft)
5,300.0	16.18	64.25	5,297.3	12.3	25.5	28.4	8.00	8.00	0.00
5,400.0	24.18	64.25	5,391.1	27.3	56.6	62.8	8.00	8.00	0.00
5,500.0	32.18	64.25	5,479.2	47.8	99.1	110.0	8.00	8.00	0.00
5,600.0	40.18	64.25	5,559.8	73.4	152.2	169.0	8.00	8.00	0.00
5,700.0	48.18	64.25	5,631.5	103.7	214.9	238.6	8.00	8.00	0.00
5,800.0	56.18	64.25	5,692.8	138.0	286.0	317.5	8.00	8.00	0.00
5,900.0	64.18	64.25	5,742.5	175.6	364.1	404.2	8.00	8.00	0.00
6,000.0	72.18	64.25	5,779.6	215.9	447.6	497.0	8.00	8.00	0.00
6,100.0	80.18	64.25	5,803.5	258.1	535.0	594.0	8.00	8.00	0.00
6,200.0	88.18	64.25	5,813.6	301.3	624.5	693.4	8.00	8.00	0.00
6,222.8	90.00	64.25	5,814.0	311.2	645.1	716.2	8.00	8.00	0.00
6,300.0	90.00	64.25	5,814.0	344.7	714.6	793.4	0.00	0.00	0.00
6,400.0	90.00	64.25	5,814.0	388.2	804.7	893.4	0.00	0.00	0.00
6,500.0	90.00	64.25	5,814.0	431.6	894.7	993.4	0.00	0.00	0.00
6,600.0	90.00	64.25	5,814.0	475.1	984.8	1,093.4	0.00	0.00	0.00
6,700.0	90.00	64.25	5,814.0	518.5	1,074.9	1,193.4	0.00	0.00	0.00
6,800.0	90.00	64.25	5,814.0	562.0	1,164.9	1,293.4	0.00	0.00	0.00
6,900.0	90.00	64.25	5,814.0	605.4	1,255.0	1,393.4	0.00	0.00	0.00
7,000.0	90.00	64.25	5,814.0	648.9	1,345.1	1,493.4	0.00	0.00	0.00
7,100.0	90.00	64.25	5,814.0	692.3	1,435.1	1,593.4	0.00	0.00	0.00
7,200.0	90.00	64.25	5,814.0	735.8	1,525.2	1,693.4	0.00	0.00	0.00
7,300.0	90.00	64.25	5,814.0	779.2	1,615.3	1,793.4	0.00	0.00	0.00
7,400.0	90.00	64.25	5,814.0	822.7	1,705.3	1,893.4	0.00	0.00	0.00
7,500.0	90.00	64.25	5,814.0	866.1	1,795.4	1,993.4	0.00	0.00	0.00
7,600.0	90.00	64.25	5,814.0	909.6	1,885.5	2,093.4	0.00	0.00	0.00
7,700.0	90.00	64.25	5,814.0	953.0	1,975.5	2,193.4	0.00	0.00	0.00
7,800.0	90.00	64.25	5,814.0	996.4	2,065.6	2,293.4	0.00	0.00	0.00
7,900.0	90.00	64.25	5,814.0	1,039.9	2,155.7	2,393.4	0.00	0.00	0.00
8,000.0	90.00	64.25	5,814.0	1,083.3	2,245.7	2,493.4	0.00	0.00	0.00
8,100.0	90.00	64.25	5,814.0	1,126.8	2,335.8	2,593.4	0.00	0.00	0.00
8,200.0	90.00	64.25	5,814.0	1,170.2	2,425.9	2,693.4	0.00	0.00	0.00
8,300.0	90.00	64.25	5,814.0	1,213.7	2,516.0	2,793.4	0.00	0.00	0.00
8,400.0	90.00	64.25	5,814.0	1,257.1	2,606.0	2,893.4	0.00	0.00	0.00
8,500.0	90.00	64.25	5,814.0	1,300.6	2,696.1	2,993.4	0.00	0.00	0.00
8,600.0	90.00	64.25	5,814.0	1,344.0	2,786.2	3,093.4	0.00	0.00	0.00
8,700.0	90.00	64.25	5,814.0	1,387.5	2,876.2	3,193.4	0.00	0.00	0.00
8,800.0	90.00	64.25	5,814.0	1,430.9	2,966.3	3,293.4	0.00	0.00	0.00
8,900.0	90.00	64.25	5,814.0	1,474.4	3,056.4	3,393.4	0.00	0.00	0.00
9,000.0	90.00	64.25	5,814.0	1,517.8	3,146.4	3,493.4	0.00	0.00	0.00
9,100.0	90.00	64.25	5,814.0	1,561.3	3,236.5	3,593.4	0.00	0.00	0.00
9,200.0	90.00	64.25	5,814.0	1,604.7	3,326.6	3,693.4	0.00	0.00	0.00
9,300.0	90.00	64.25	5,814.0	1,648.2	3,416.6	3,793.4	0.00	0.00	0.00
9,400.0	90.00	64.25	5,814.0	1,691.6	3,506.7	3,893.4	0.00	0.00	0.00
9,500.0	90.00	64.25	5,814.0	1,735.1	3,596.8	3,993.4	0.00	0.00	0.00
9,600.0	90.00	64.25	5,814.0	1,778.5	3,686.8	4,093.4	0.00	0.00	0.00
9,700.0	90.00	64.25	5,814.0	1,822.0	3,776.9	4,193.4	0.00	0.00	0.00
9,800.0	90.00	64.25	5,814.0	1,865.4	3,867.0	4,293.4	0.00	0.00	0.00
9,900.0	90.00	64.25	5,814.0	1,908.9	3,957.0	4,393.4	0.00	0.00	0.00
10,000.0	90.00	64.25	5,814.0	1,952.3	4,047.1	4,493.4	0.00	0.00	0.00
10,100.0	90.00	64.25	5,814.0	1,995.8	4,137.2	4,593.4	0.00	0.00	0.00
10,200.0	90.00	64.25	5,814.0	2,039.2	4,227.2	4,693.4	0.00	0.00	0.00
10,300.0	90.00	64.25	5,814.0	2,082.7	4,317.3	4,793.4	0.00	0.00	0.00
10,400.0	90.00	64.25	5,814.0	2,126.1	4,407.4	4,893.4	0.00	0.00	0.00
10,500.0	90.00	64.25	5,814.0	2,169.6	4,497.4	4,993.4	0.00	0.00	0.00

## Planning Report

<b>Database:</b>	EDM 5000.1 Single User Db	<b>Local Co-ordinate Reference:</b>	Site Sec 03 T01S R104W
<b>Company:</b>	KGH Operating	<b>TVD Reference:</b>	WELL @ 6230.0usft (Original Well Elev)
<b>Project:</b>	Rio Blanco Co., CO	<b>MD Reference:</b>	WELL @ 6230.0usft (Original Well Elev)
<b>Site:</b>	Sec 03 T01S R104W	<b>North Reference:</b>	True
<b>Well:</b>	Meagher #3-1H	<b>Survey Calculation Method:</b>	Minimum Curvature
<b>Wellbore:</b>	Wellbore #1		
<b>Design:</b>	Design #1		

Planned Survey										
Measured Depth (usft)	Inclination (°)	Azimuth (°)	Vertical Depth (usft)	+N/-S (usft)	+E/-W (usft)	Vertical Section (usft)	Dogleg Rate (°/100usft)	Build Rate (°/100usft)	Turn Rate (°/100usft)	
10,600.0	90.00	64.25	5,814.0	2,213.0	4,587.5	5,093.4	0.00	0.00	0.00	
10,700.0	90.00	64.25	5,814.0	2,256.5	4,677.6	5,193.4	0.00	0.00	0.00	
10,800.0	90.00	64.25	5,814.0	2,299.9	4,767.6	5,293.4	0.00	0.00	0.00	
10,900.0	90.00	64.25	5,814.0	2,343.4	4,857.7	5,393.4	0.00	0.00	0.00	
11,000.0	90.00	64.25	5,814.0	2,386.8	4,947.8	5,493.4	0.00	0.00	0.00	
11,100.0	90.00	64.25	5,814.0	2,430.3	5,037.9	5,593.4	0.00	0.00	0.00	
11,199.6	90.00	64.25	5,814.0	2,473.5	5,127.6	5,693.0	0.00	0.00	0.00	

Design Targets										
Target Name - hit/miss target - Shape	Dip Angle (°)	Dip Dir. (°)	TVD (usft)	+N/-S (usft)	+E/-W (usft)	Northing (usft)	Easting (usft)	Latitude	Longitude	
BHL 3-1H - plan hits target center - Point	0.00	0.00	5,814.0	2,473.5	5,127.6	259,449.69	1,011,119.25	39° 59' 29.569 N	109° 1' 48.659 W	
Land 3-1H - plan hits target center - Point	0.00	0.00	5,814.0	311.2	645.1	257,468.41	1,006,553.85	39° 59' 8.204 N	109° 2' 46.251 W	

Casing Points					
Measured Depth (usft)	Vertical Depth (usft)	Name	Casing Diameter (")	Hole Diameter (")	
1,000.0	1,000.0	9 5/8"	9-5/8	12-1/4	
6,222.0	5,814.0	7"	7	8-3/4	

Plan Annotations					
Measured Depth (usft)	Vertical Depth (usft)	Local Coordinates		Comment	
		+N/-S (usft)	+E/-W (usft)		
5,097.8	5,097.8	0.0	0.0	KOP 8°/100' @ 5097' MD	
6,222.8	5,814.0	311.2	645.1	"Land #3-1H" 90° @ 6222' MD	
11,199.6	5,814.0	2,473.5	5,127.6	"TD #3-1H" @ 11199' MD	

KGH Operating  
Meagher #3-1H - Design #1

Rio Blanco Co., CO  
Sec 03 T01S R104W  
Your Ref:

Measured Depth (ft)	Incl.	Azim.	Vertical Depth (ft)	Northings (ft)	Eastings (ft)	Vertical Section (ft)	Dogleg Rate (°/100ft)
0	0	0	0	0	0	0	0
5099.99	0.175	64.247	5099.99	0	0	0	0
5199.99	8.175	64.247	5199.64	3.16	6.55	7.28	8
5299.99	16.175	64.247	5297.31	12.32	25.53	28.35	8
5399.99	24.175	64.247	5391.1	27.29	56.57	62.81	8
5499.99	32.175	64.247	5479.18	47.79	99.06	109.99	8
5599.99	40.175	64.247	5559.84	73.41	152.18	168.97	8
5699.99	48.175	64.247	5631.5	103.67	214.9	238.59	8
5799.99	56.175	64.247	5692.78	137.96	285.98	317.52	8
5899.99	64.175	64.247	5742.47	175.62	364.06	404.2	8
5999.99	72.175	64.247	5779.62	215.92	447.6	496.96	8
6099.99	80.175	64.247	5803.5	258.08	534.99	593.98	8
6199.99	88.175	64.247	5813.64	301.27	624.52	693.39	8
6299.99	90	64.247	5814	344.71	714.58	793.38	1.83
6399.99	90	64.247	5814	388.16	804.65	893.38	0
6499.99	90	64.247	5814	431.61	894.72	993.38	0
6599.99	90	64.247	5814	475.06	984.79	1093.38	0
6699.99	90	64.247	5814	518.51	1074.85	1193.38	0
6799.99	90	64.247	5814	561.96	1164.92	1293.38	0
6899.99	90	64.247	5814	605.4	1254.99	1393.38	0
6999.99	90	64.247	5814	648.85	1345.06	1493.38	0
7099.99	90	64.247	5814	692.3	1435.12	1593.38	0
7199.99	90	64.247	5814	735.75	1525.19	1693.38	0
7299.99	90	64.247	5814	779.2	1615.26	1793.38	0
7399.99	90	64.247	5814	822.65	1705.33	1893.38	0
7499.98	90	64.247	5814	866.1	1795.39	1993.38	0
7599.98	90	64.247	5814	909.54	1885.46	2093.38	0
7699.98	90	64.247	5814	952.99	1975.53	2193.38	0
7799.98	90	64.247	5814	996.44	2065.6	2293.38	0
7899.98	90	64.247	5814	1039.89	2155.66	2393.38	0
7999.98	90	64.247	5814	1083.34	2245.73	2493.38	0
8099.98	90	64.247	5814	1126.79	2335.8	2593.38	0

8199.98	90	64.247	5814	1170.24	2425.87	2693.38	0
8299.98	90	64.247	5814	1213.68	2515.94	2793.38	0
8399.98	90	64.247	5814	1257.13	2606	2893.38	0
8499.98	90	64.247	5814	1300.58	2696.07	2993.38	0
8599.98	90	64.247	5814	1344.03	2786.14	3093.38	0
8699.98	90	64.247	5814	1387.48	2876.21	3193.38	0
8799.98	90	64.247	5814	1430.93	2966.27	3293.38	0
8899.98	90	64.247	5814	1474.37	3056.34	3393.38	0
8999.98	90	64.247	5814	1517.82	3146.41	3493.38	0
9099.98	90	64.247	5814	1561.27	3236.48	3593.38	0
9199.98	90	64.247	5814	1604.72	3326.54	3693.38	0
9299.98	90	64.247	5814	1648.17	3416.61	3793.38	0
9399.98	90	64.247	5814	1691.62	3506.68	3893.38	0
9499.98	90	64.247	5814	1735.07	3596.75	3993.38	0
9599.98	90	64.247	5814	1778.51	3686.82	4093.38	0
9699.98	90	64.247	5814	1821.96	3776.88	4193.38	0
9799.98	90	64.247	5814	1865.41	3866.95	4293.37	0
9899.98	90	64.247	5814	1908.86	3957.02	4393.37	0
9999.98	90	64.247	5814	1952.31	4047.09	4493.37	0
10099.98	90	64.247	5814	1995.76	4137.15	4593.37	0
10199.98	90	64.247	5814	2039.21	4227.22	4693.37	0
10299.98	90	64.247	5814	2082.65	4317.29	4793.37	0
10399.98	90	64.247	5814	2126.1	4407.36	4893.37	0
10499.98	90	64.247	5814	2169.55	4497.42	4993.37	0
10599.98	90	64.247	5814	2213	4587.49	5093.37	0
10699.98	90	64.247	5814	2256.45	4677.56	5193.37	0
10799.98	90	64.247	5814	2299.9	4767.63	5293.37	0
10899.98	90	64.247	5814	2343.35	4857.7	5393.37	0
10999.98	90	64.247	5814	2386.79	4947.76	5493.37	0
11099.98	90	64.247	5814	2430.24	5037.83	5593.37	0
11199.63	90	64.247	5814	2473.54	5127.58	5693.02	0