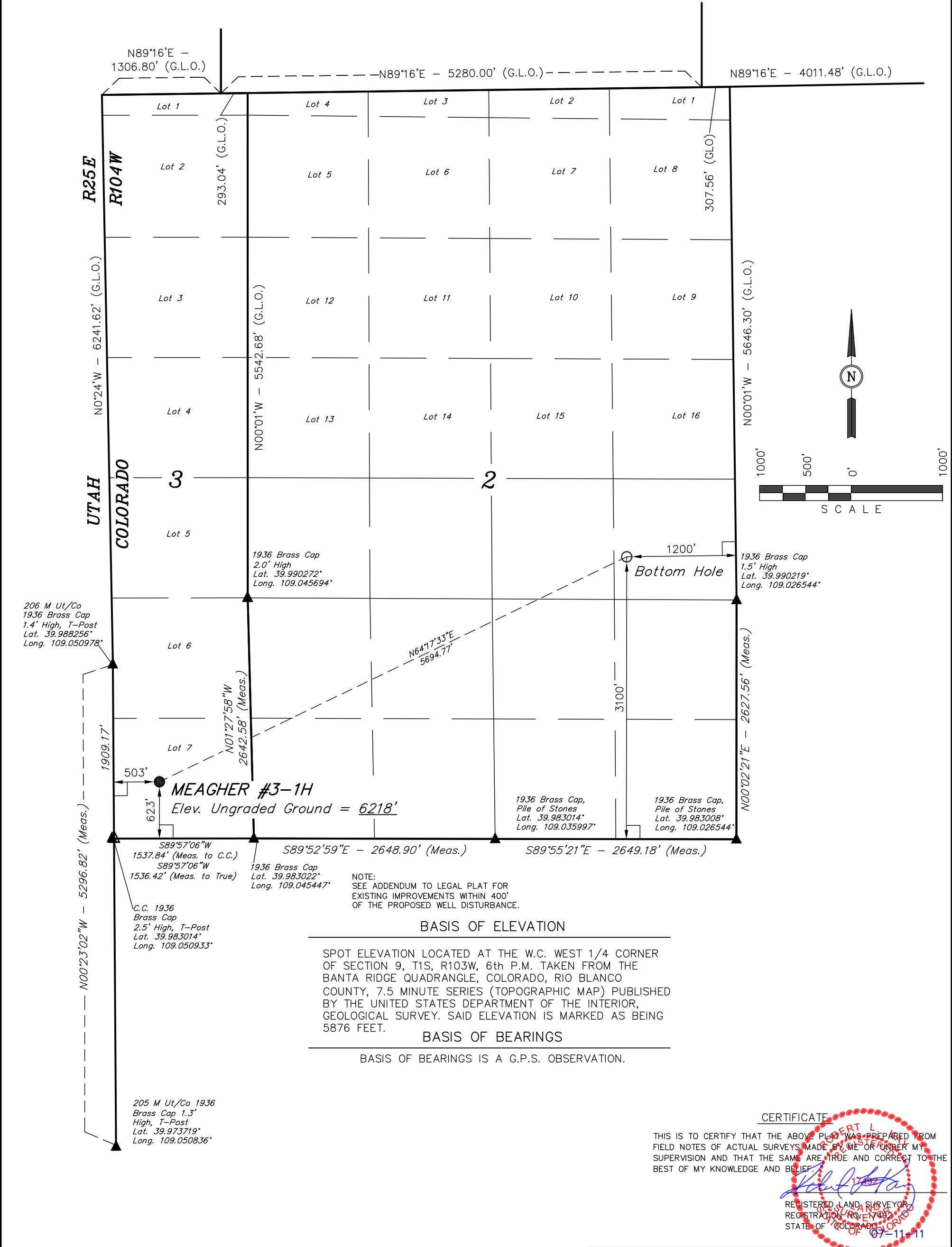


T1S, R104W, 6th P.M.

KGH OPERATING COMPANY

Well location, MEAGHER #3-1H, located as shown in Lot 7 of Section 3, T1S, R104W, 6th P.M., Rio Blanco County, Colorado.



- LEGEND:
- └─┘ = 90° SYMBOL
 - = PROPOSED WELL HEAD.
 - ▲ = SECTION CORNERS LOCATED.
 - △ = SECTION CORNERS RE-ESTABLISHED. (Not Set on Ground.)

PDOP = 2.4	
NAD 83 (TARGET BOTTOM HOLE)	NAD 83 (SURFACE LOCATION)
LATITUDE = 39°59'29.46" (39.991517)	LATITUDE = 39°59'05.02" (39.984728)
LONGITUDE = 109°01'51.06" (109.030850)	LONGITUDE = 109°02'56.94" (109.049150)
NAD 27 (TARGET BOTTOM HOLE)	NAD 27 (TARGET BOTTOM HOLE)
LATITUDE = 39°59'29.57" (39.991547)	LATITUDE = 39°59'05.13" (39.984758)
LONGITUDE = 109°01'48.66" (109.030183)	LONGITUDE = 109°02'54.54" (109.048483)

UINTEAH ENGINEERING & LAND SURVEYING		
85 SOUTH 200 EAST - VERNAL, UTAH 84078		
(435) 789-1017		
SCALE	DATE SURVEYED:	DATE DRAWN:
1" = 1000'	06-09-11	07-06-11
PARTY	REFERENCES	
A.F. B.A. S.R.L.	G.L.O. PLAT	
WEATHER	FILE	
WARM	KGH OPERATING COMPANY	



KGH OPERATING COMPANY

ADDENDUM TO LEGAL PLAT FOR

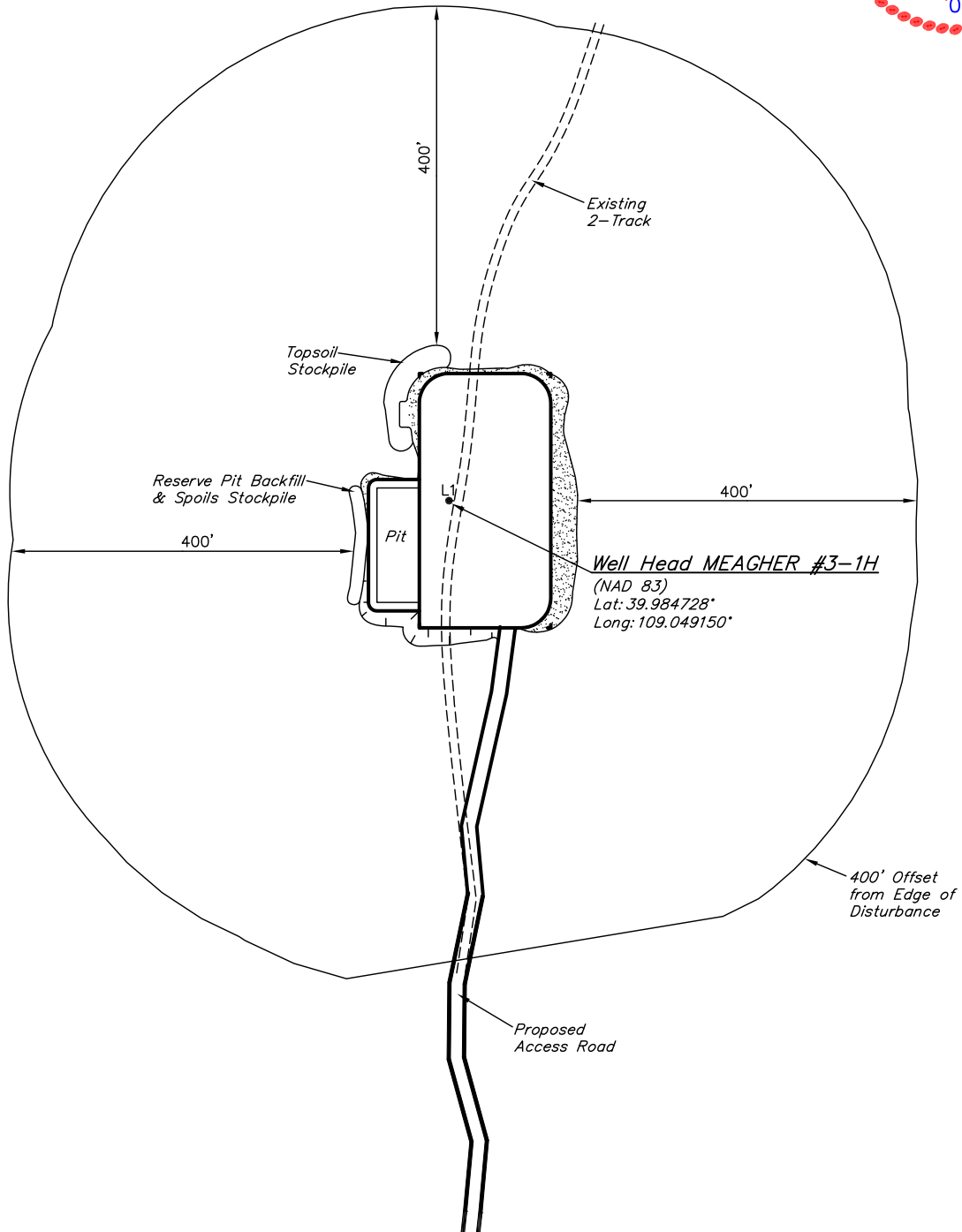
MEAGHER #3-1
SECTION 3, T1S, R104W, 6th P.M.
623' FSL 503' FWL

SCALE: 1" = 200'

DATE: 07-06-11

DRAWN BY: S.R.L.

LINE TABLE		
LINE	BEARING	LENGTH
L1	S82°E	6'



UINTAH ENGINEERING & LAND SURVEYING

85 So. 200 East * Vernal, Utah 84078 * (435) 789-1017