

WHITING OIL & GAS CORP.

ADDENDUM TO LEGAL PLAT FOR

WILDHORSE #06-0614H
SECTION 6, T9N, R59W, 6th P.M.
170' FNL 660' FWL

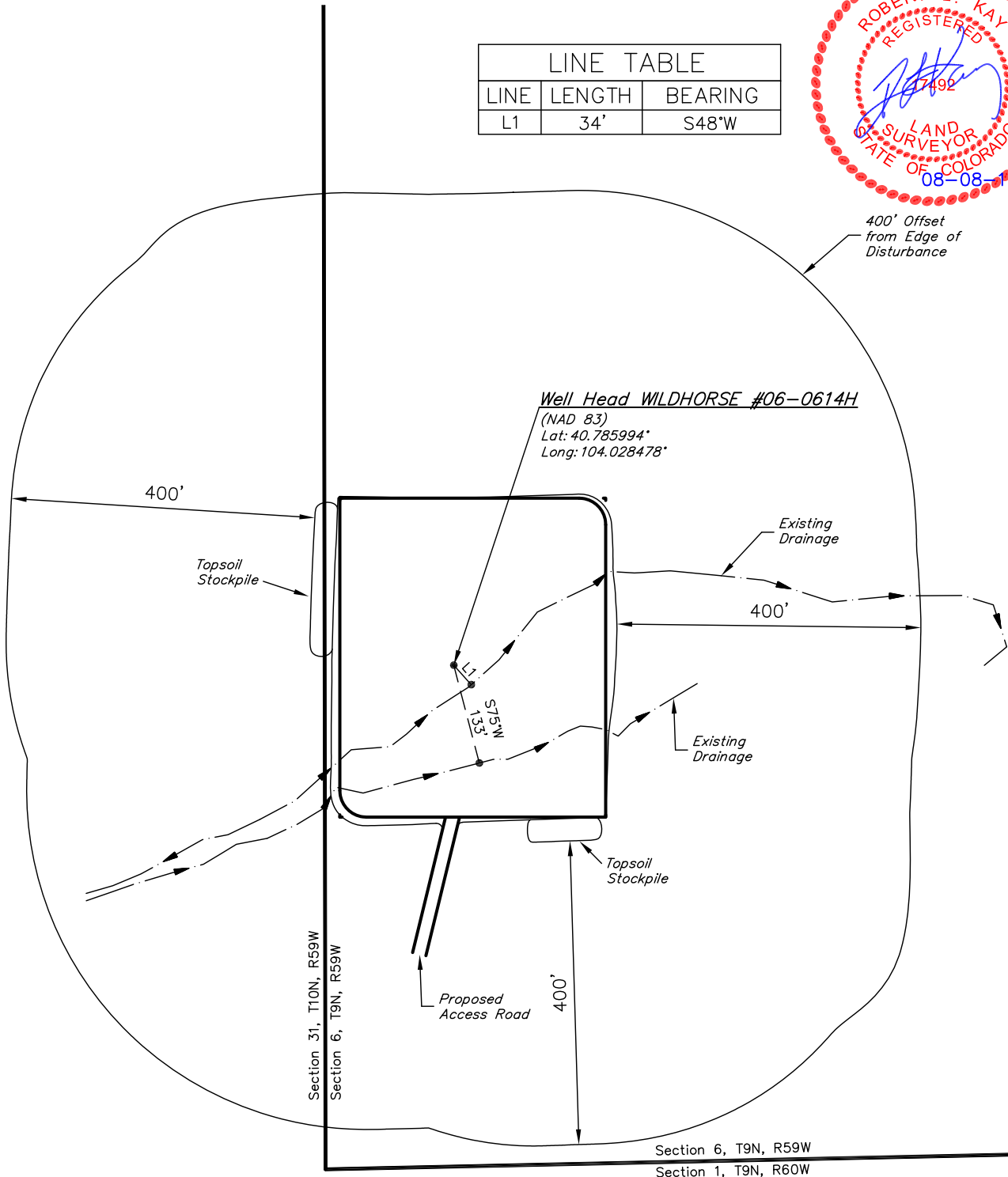
SCALE: 1" = 200'

DATE: 08-04-11

DRAWN BY: T.B.



LINE TABLE		
LINE	LENGTH	BEARING
L1	34'	S48°W



UINTAH ENGINEERING & LAND SURVEYING

85 So. 200 East * Vernal, Utah 84078 * (435) 789-1017