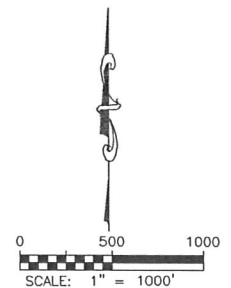
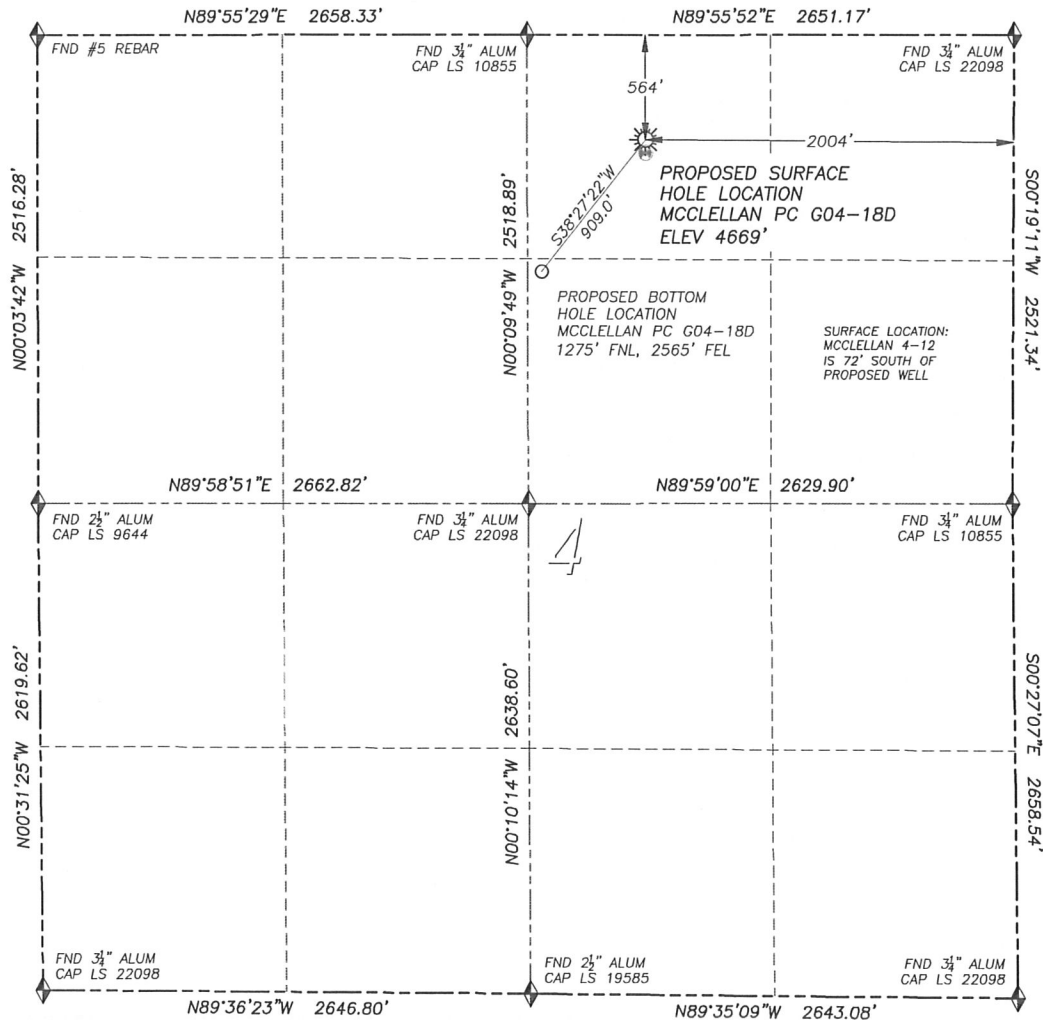


WELL LOCATION CERTIFICATE

MCCLELLAN PC G04-18D

SECTION 4, TOWNSHIP 4 NORTH, RANGE 65 WEST OF THE 6TH PRINCIPAL MERIDIAN

**LEGEND**

- ◆ FOUND MONUMENT AS DESCRIBED
- ☀ PROPOSED WELL
- ⊙ EXISTING WELL
- BOTTOM HOLE
- ⊘ ABANDONED WELL

NAD 83 LATITUDE AND LONGITUDE

MCCLELLAN PC G04-18D

SURFACE HOLE:

LATITUDE: N40.34694°
 LONGITUDE: W104.66588°
 ELEVATION: 4669'
 FOOTAGE: 564' FNL, 2004' FEL
 PDOP: 2.2
 QTR/QTR: NW4/NE4
 PROP LINE: 483'± NORTHWEST

BOTTOM HOLE:

LATITUDE: N40.34498°
 LONGITUDE: W104.66791°
 FOOTAGE: 1275' FNL, 2565' FEL

NEAREST EXISTING WELL:

MCCLELLAN 4-12 SURFACE HOLE
 LATITUDE: N40.34674°
 LONGITUDE: W104.66588°
 ELEVATION: 4669'
 72' SOUTH

IN ACCORDANCE WITH A REQUEST FROM RYAN HAWKINS OF NOBLE ENERGY INC., DALEY LAND SURVEYING, INC. HAS DETERMINED THE SURFACE LOCATION OF THE MCCLELLAN PC G04-18D WELL TO BE 564' FNL, 2004' FEL, AS MEASURED AT NINETY (90) DEGREES FROM THE SECTION LINES OF SECTION 4, TOWNSHIP 4 NORTH, RANGE 65 WEST OF THE 6TH PRINCIPAL MERIDIAN, WELD COUNTY, COLORADO. THE BOTTOM HOLE LOCATION, PROVIDED BY THE CLIENT, IS TO BE 1275' FNL, 2565' FEL.

I HEREBY CERTIFY THAT THIS WELL LOCATION CERTIFICATE WAS PREPARED BY ME OR UNDER MY DIRECT SUPERVISION, THAT THE WORK WAS COMPLETED ON 12/20/2011 FOR AND ON BEHALF OF NOBLE ENERGY, INC., AND THAT THIS MAP DOES NOT REPRESENT A BOUNDARY SURVEY, IT IS NOT A LAND SURVEY PLAT OR AN IMPROVEMENT SURVEY PLAT AND IT IS NOT TO BE RELIED UPON FOR THE ESTABLISHMENT OF FENCE, BUILDING OR OTHER FUTURE IMPROVEMENT LINES.

NOTES:

- 1) BEARINGS FOR THIS MAP ARE ASSUMED AND BASED UPON GPS OBSERVATIONS MADE BETWEEN MONUMENTS LOCATED AT THE NORTHEAST CORNER AND NORTH QUARTER CORNER OF SECTION 4, T.4N., R.65W.
- 2) HORIZONTAL DATUM IS NAD83.
- 3) VERTICAL DATUM IS NAVD88. ELEVATIONS ARE DERIVED FROM GPS OBSERVATIONS PROCESSED THROUGH OPUS, UTILIZING THE GEOID09 MODEL.
- 4) SEE LOCATION DRAWING FOR VISIBLE IMPROVEMENTS WITHIN 600' OF PROPOSED SURFACE HOLE LOCATION.
- 5) SURFACE USE: AGRICULTURAL.

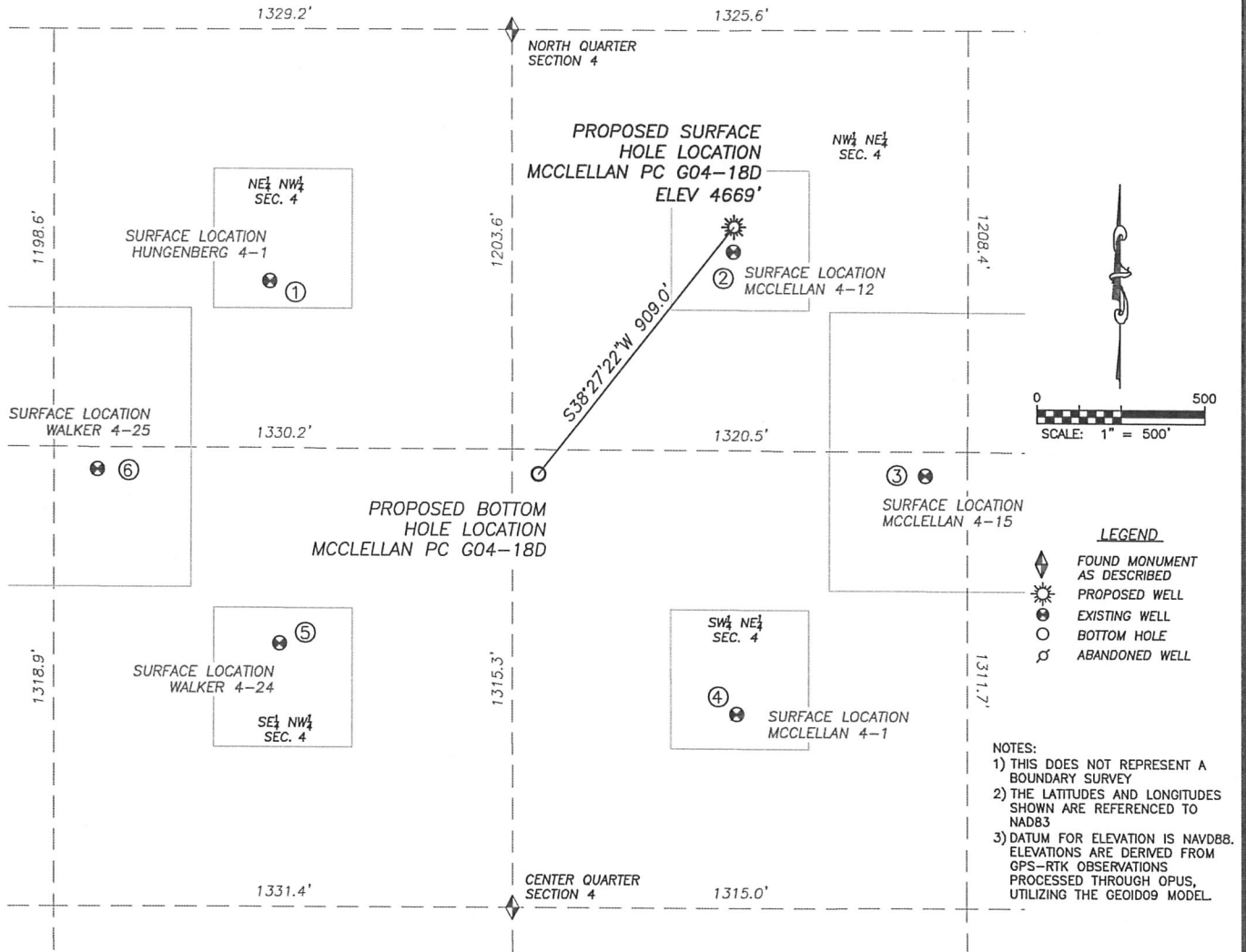
NOTICE: According to Colorado law you MUST commence any legal action based upon any defect in this W.L.C. within three years after you first discover such defect. In no event may any action based upon any such defect in this W.L.C. be commenced more than ten years from the date of the certification shown herein.



FOR AND ON BEHALF OF
 DALEY LAND SURVEYING, INC.,
 Robert Daley, PLS 35597

SITE SKETCH MCCLELLAN PC G04-18D

SECTION 4, TOWNSHIP 4 NORTH, RANGE 65 WEST OF THE 6TH PRINCIPAL MERIDIAN



①

HUNGENBERG 4-1

NE/NW SEC. 4
723' FNL, 1957' FWL
954' NW OF PROPOSED
BOTTOM HOLE LOCATION
LAT. N40.34650°
LONG. W104.67070°
EL: 4673'
PDOP 2.2

②

MCCLELLAN 4-12

NW/NE SEC. 4
636' FNL, 2004' FEL
853' NE OF PROPOSED
BOTTOM HOLE LOCATION
LAT. N40.34674°
LONG. W104.66588°
EL: 4669'
PDOP 1.8

③

MCCLELLAN 4-15

SW/NE SEC. 4
1277' FNL, 1442' FEL
1123' E OF PROPOSED
BOTTOM HOLE LOCATION
LAT. N40.34498°
LONG. W104.66388°
EL: 4671'
PDOP 2.1

④

MCCLELLAN 4-1

SW/NE SEC. 4
1963' FNL, 1986' FEL
897' SE OF PROPOSED
BOTTOM HOLE LOCATION
LAT. N40.34310°
LONG. W104.66584°
EL: 4676'
PDOP 1.8

⑤

WALKER 4-24

SE/NW SEC. 4
1763' FNL, 1986' FWL
895' SW OF PROPOSED
BOTTOM HOLE LOCATION
LAT. N40.34364°
LONG. W104.67059°
EL: 4675'
PDOP 2.0

⑥

WALKER 4-25

SE/NW SEC. 4
1263' FNL, 1457' FWL
1279' W OF PROPOSED
BOTTOM HOLE LOCATION
LAT. N40.34501°
LONG. W104.67249°
EL: 4671'
PDOP 2.4