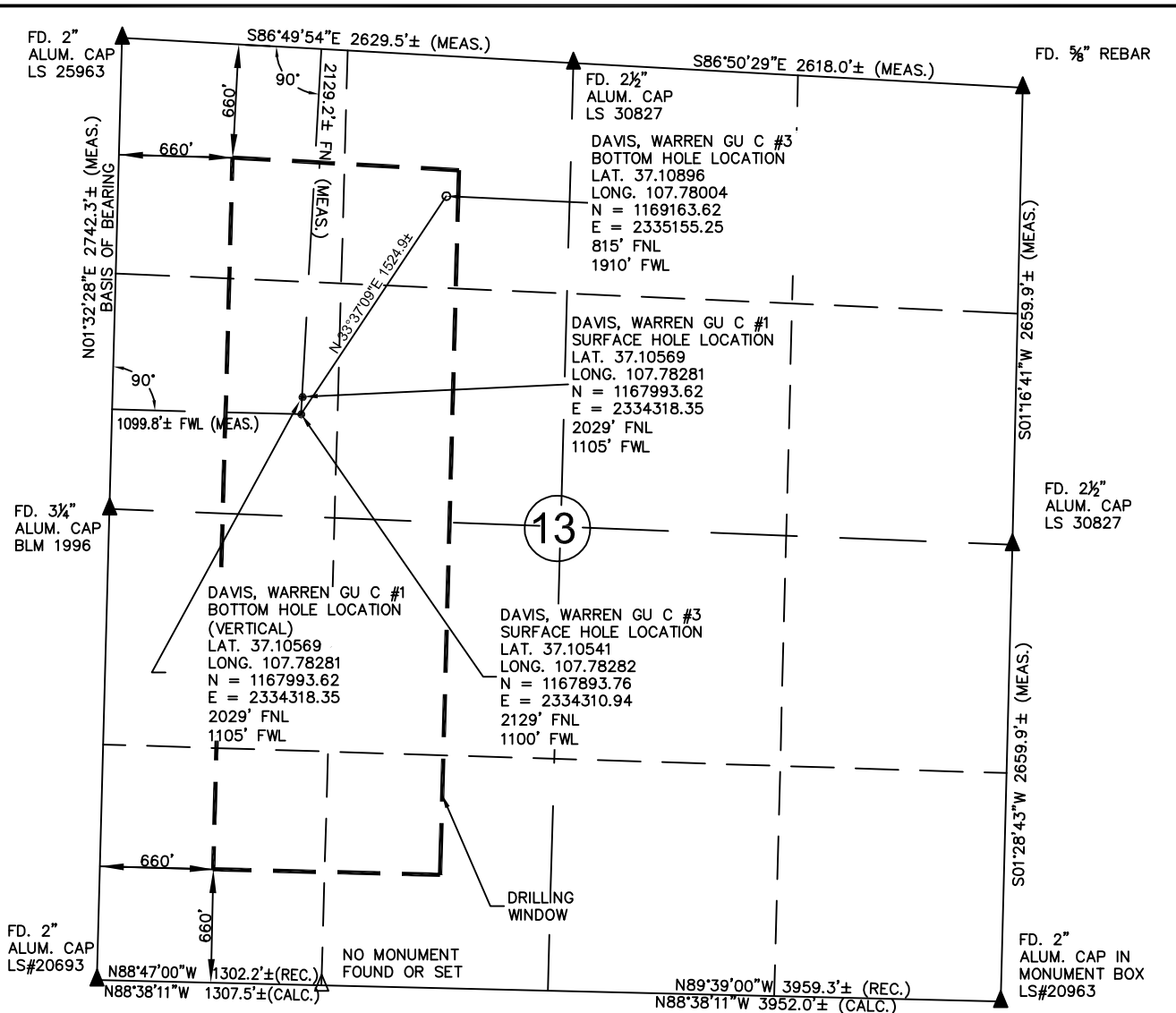


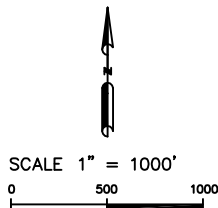
Drawing: DAVISWARREN\_GUC3\_MULTI-WELL.DWG Plotted by: DALLAS\_KHOLL Date: 12/07/2011 04:17:56 PM R:\Project Files\BP\BP 80 Acre Infill\Davis, Warren GU C #3\Permit Drawings\



OPERATOR: BP AMERICA PRODUCTION COMPANY  
LEASE: DAVIS, WARREN GU C #3  
SECTION 13 TOWNSHIP 33 NORTH RANGE 09 WEST N.M.P.M.  
COUNTY: LA PLATA COUNTY, COLORADO

DAVIS, WARREN GU C #3: 2129 FEET FROM THE NORTH LINE, AND 1100 FEET FROM THE WEST LINE  
BOTTOM HOLE LOCATION: 815 FEET FROM THE NORTH LINE, AND 1910 FEET FROM THE WEST LINE  
GROUND LEVEL ELEVATION: 6694.8'

DAVIS, WARREN GU C #1 2029 FEET FROM THE NORTH LINE, AND 1105 FEET FROM THE WEST LINE  
BOTTOM HOLE LOCATION: 2029 FEET FROM THE NORTH LINE, AND 1105 FEET FROM THE WEST LINE  
GROUND LEVEL ELEVATION: 6694.3'



#### LEGEND:

- = PROPOSED WELL HEAD
- = BOTTOM HOLE LOCATION
- ▲ = SECTION CORNERS LOCATED
- △ = SECTION CORNERS NOT FOUND OR SET THIS SURVEY (CALCULATED LOCATION).
- S.U.I.T. = SOUTHERN UTE INDIAN TRIBE
- BLM = BUREAU OF LAND MANAGEMENT

- 1) BASIS OF BEARING: GPS OBSERVATION ALONG THE WEST LINE OF THE NW1/4 OF SAID SECTION 13. BEARS: N01°32'28"E
- 2) DATE FIELD SURVEY: 6/9/11
- 3) ELEVATION DETERMINED FROM NGVD 1988 DATUM, AND COLLECTED VIA NAD 83 SPC CO-S, FEET (GRID).
- 4) RECORD BEARING AND DISTANCE TAKEN FROM GLO PLAT ON FILE AT BLM OFFICE IN DURANGO, CO.
- 5) ALL DIMENSIONS SHOWN HEREON ARE ON SPC CO-S GRID.
- 6) INSTRUMENT OPERATOR: BILL MITCHELL
- 7) PDOP VALUE: 1.8

PROJ. NO. 49228572	FILE NO. DAVISWARRENGUC3	DAVIS, WARREN GU C #3 MULTI - WELL PLAN		REV B
DRAWN BY DK	DATE 12/07/11	CLIENT PC	BP AMERICA PROD. CO. - DURANGO, CO	