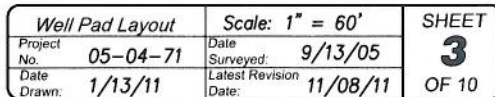


PJ-21 Well Pad

WELL PAD LAYOUT

NO FILL SLOPE OR SIDECAST
WILL BE ALLOWED OUTSIDE
THE DISTURBANCE BOUNDARY-
PARTICULARLY AT CORNER 2.

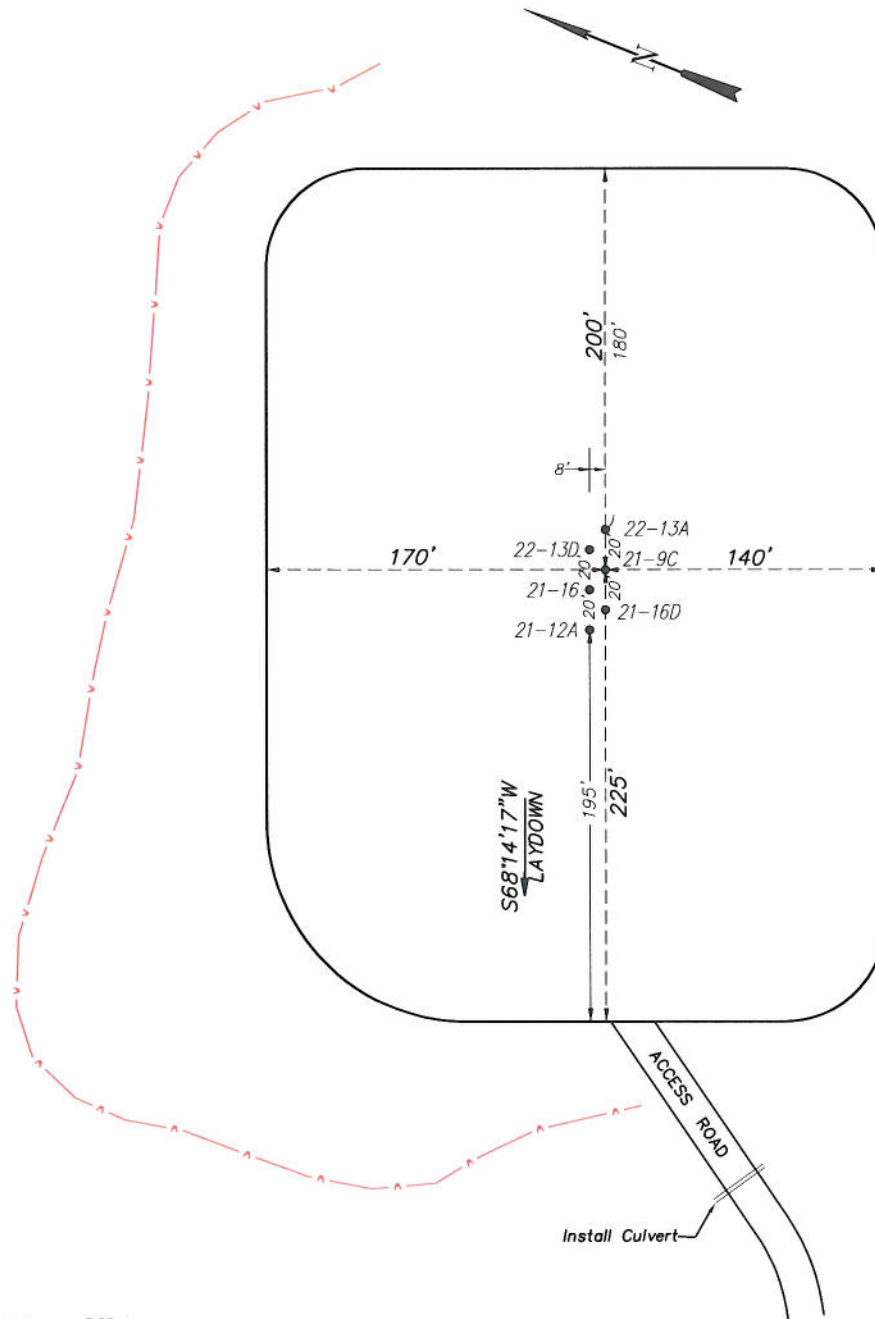


EnCana Oil & Gas (USA) Inc.

PJ-21 Well Pad

NW1/4 SE1/4, SECTION 21, T7S, R95W, 6th P.M.

PRE-CONSTRUCTION PLAT



Total Surface Disturbance = **5.88 Acres**
(See Sheet 4 for Details)

NOTES:

- (1) Slope Track and/or Terrace all Slopes and Piles
- (2) Erosion Control & Seed Topsoil
- (3) Erosion Control & Seed Outside
- (4) Slope away from Substructure Areas 1% to 3% to Flow Control

LEGEND

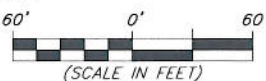
- SLASH
- ST = SEDIMENT TRAP
- SeoR = SEDIMENT RESERVOIR
- R.O.D. = RUN-ON DIVERSION
- PERIMETER CONTROL (WATTLES)
- CSO = CUT SLOPE DIVERSION (BERM TOE OF CUT SLOPE)
- D = FILL DIVERSION TO SEDIMENT TRAP
- VCB = VEGETATION BUFFER (UNDISTURBED LAND INSIDE PC)
- FCD = FLOW CONTROL DITCH
- P.A.R. = PAD/ACCESS ROAD INTERFACE
- LEVEL SPREADER
- TOE BERM (PLACED AT TOE OF ALL FILL SLOPES/STOCKPILES)
- TOPSOIL BERM
- SEED, ECB & FLEX
- SEED

PRE-CONSTRUCTION PHASE COMPLETE,
AUTHORIZATION TO CONTINUE
CONSTRUCTION.

SIGNATURE: _____



906 Main Street
Evanston, Wyoming 82930
Phone No. (307) 789-4545

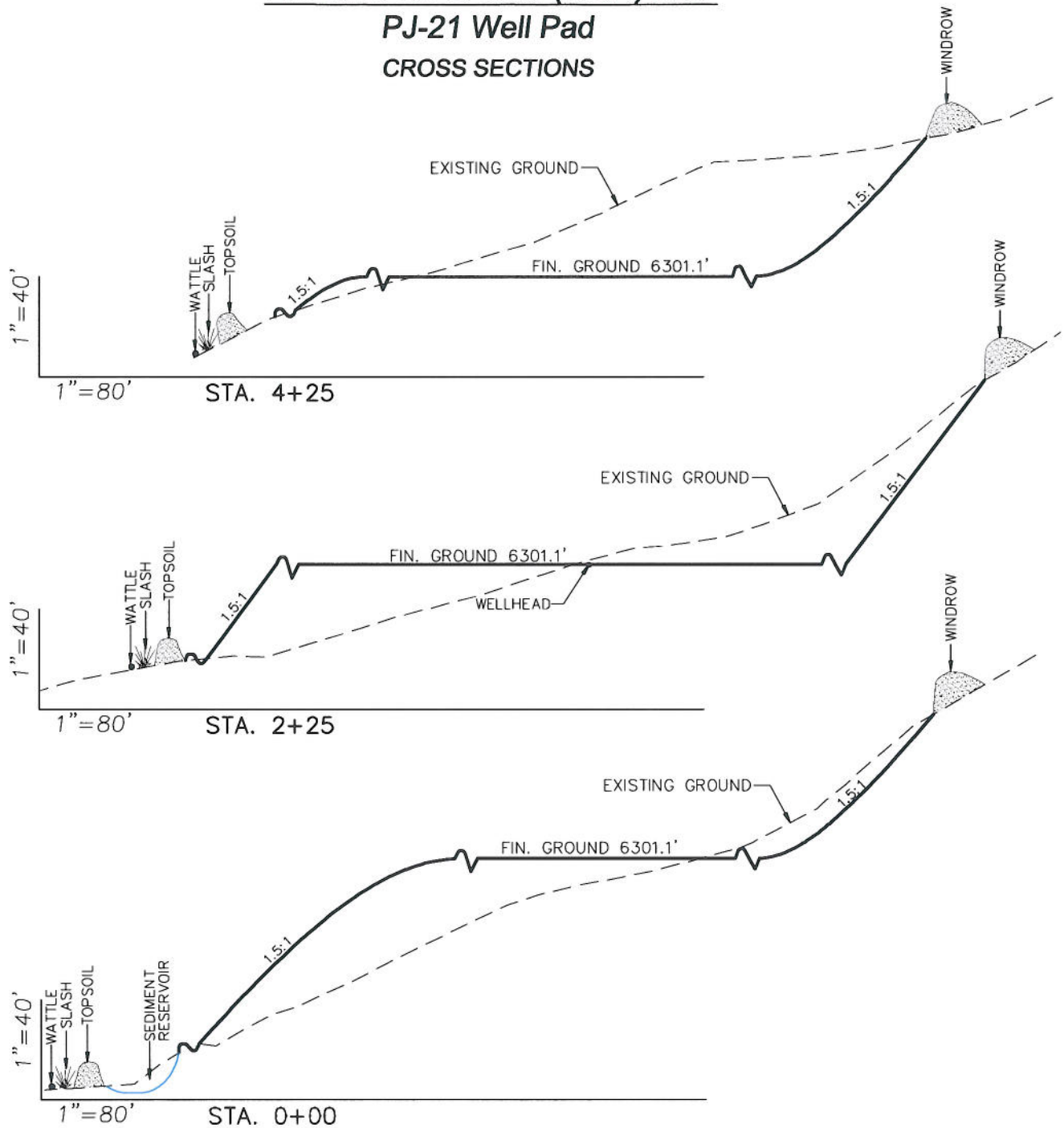


Pre-Construction		Scale: 1" = 60'	SHEET
Project No.	05-04-71	Date Surveyed: 9/13/05	3a
Date Drawn: 1/13/11		Latest Revision Date:	
			OF 10

EnCana Oil & Gas (USA) Inc.

PJ-21 Well Pad

CROSS SECTIONS



SURFACE DISTURBANCE (IN ACRES)

Well Pad	2.94
Side Slopes	1.47
Stockpiles & Stormwater	1.47
TOTAL	5.88

NOTE:
ALL CUT AND FILL
SLOPES ARE AT 1.5:1
UNLESS OTHERWISE
NOTED.

EARTHWORK QUANTITIES

(in Cubic Yards w/ 0% shrink/swell)

ITEM	CUT	FILL	6" TOPSOIL	EXCESS
PAD	46100	43598	Topsoil not included in Excavation	2502
PIT	0	0		0
TOTALS	46100	43598	3558	2502



906 Main Street
Evanston, Wyoming 82930
Phone No. (307) 789-4545

Cross Sections

Project No. 05-04-71
Date Drawn: 1/13/11

Scale: As Shown

Date Surveyed: 9/13/05
Latest Revision Date:

SHEET

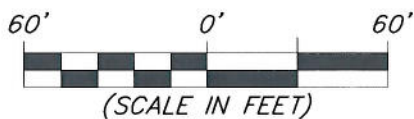
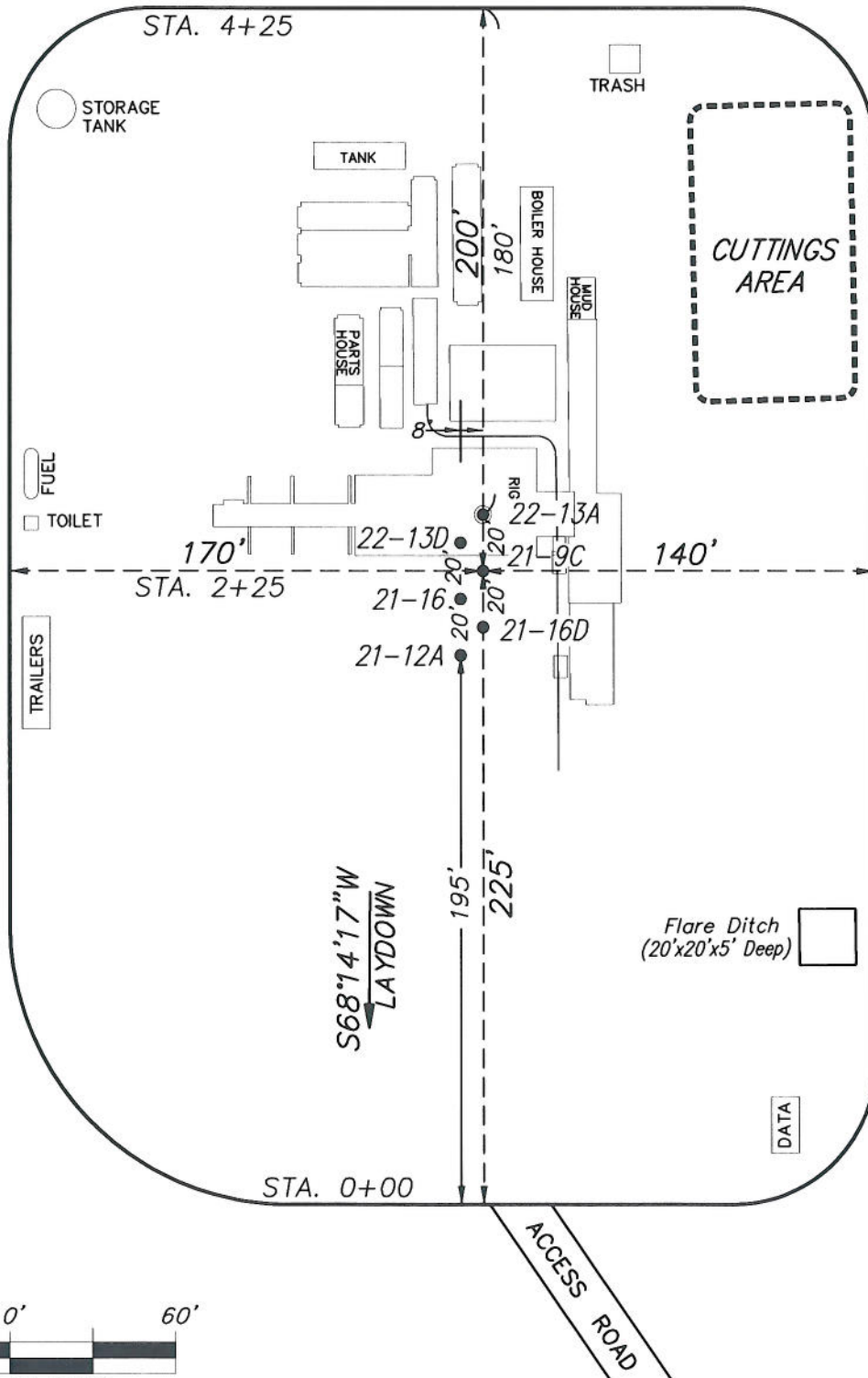
4

OF 10

EnCana Oil & Gas (USA) Inc.

PJ-21 Well Pad

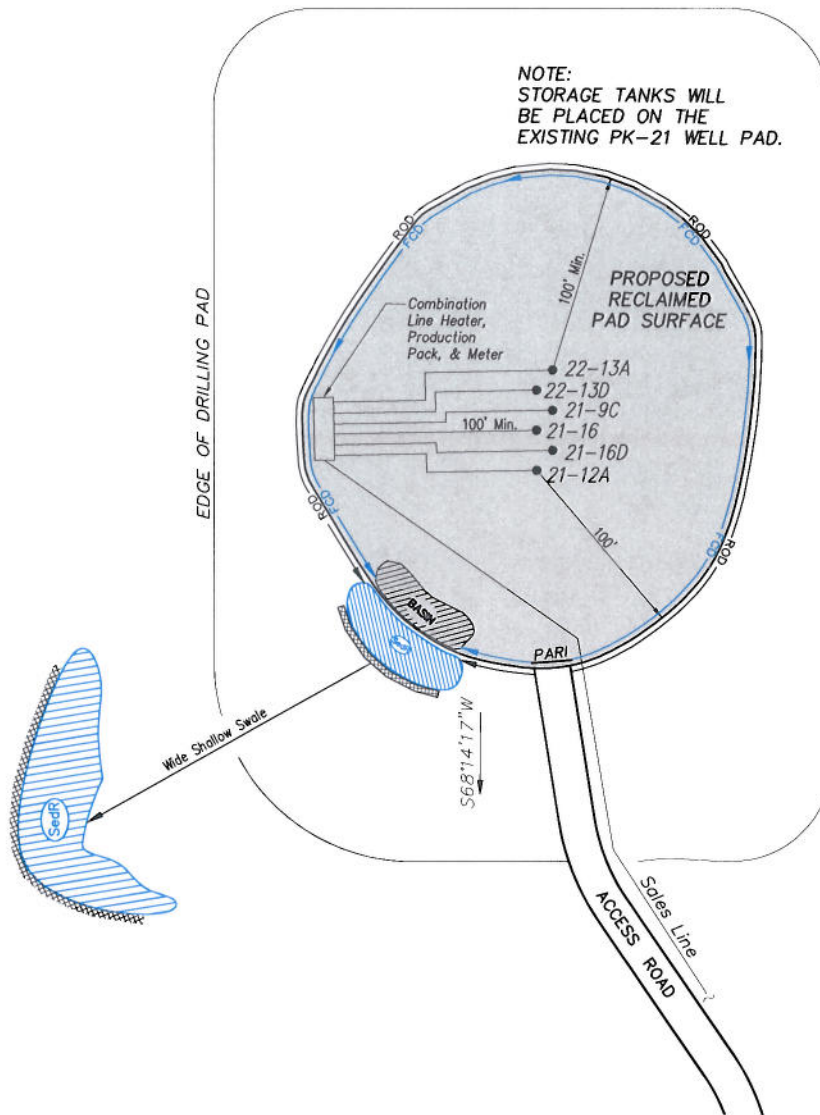
TYPICAL RIG LAYOUT



906 Main Street
Evanston, Wyoming 82930
Phone No. (307) 789-4545

Rig Layout		Scale: 1" = 60'	SHEET
Project No.	05-04-71	Date Surveyed: 9/13/05	5 OF 10
Date Drawn: 1/13/11	Latest Revision Date: 11/08/11		

EnCana Oil & Gas (USA) Inc.
PJ-21 Well Pad
PRODUCTION SCHEMATIC



NOTES:

1. Set Tanks High so pad Entrance & Tank Area Can Drain to Pad Basin
2. Gravel Pad 75' from Wells & Around Tanks and Separators
3. Pad Drains to Pad Basin at a 3% to 5% slope
4. BMP Selection and Position may change Depending on Actual Conditions Encountered During the Construction Process

NOTE:

Actual Equipment Layout and Reclaimed Pad Surface Area May Change due to Production Requirements or Site Conditions.

ESTIMATED AREAS

RECLAIMED AREA: 4.89 ACRES
 UNRECLAIMED AREA: 0.99 ACRES
 (PRODUCTION PAD)

LEGEND

SedR = SEDIMENT RESERVOIR
 R.O.D. = RUN-ON DIVERSION
 P.C. = PERIMETER CONTROL (WATTLES)
 C.S.D. = CUT SLOPE DIVERSION (BERM TOE OF CUT SLOPE)
 D = FILL DIVERSION TO SEDIMENT TRAP
 VCB = VEGETATION BUFFER (UNDISTURBED LAND INSIDE PC)
 FCD = FLOW CONTROL DITCH
 PARI = PAD/ACCESS ROAD INTERFACE
 L.S. = LEVEL SPREADER
 S.E.C.B. & FLEX = SEED, ECB & FLEX



906 Main Street
 Evanston, Wyoming 82930
 Phone No. (307) 789-4545



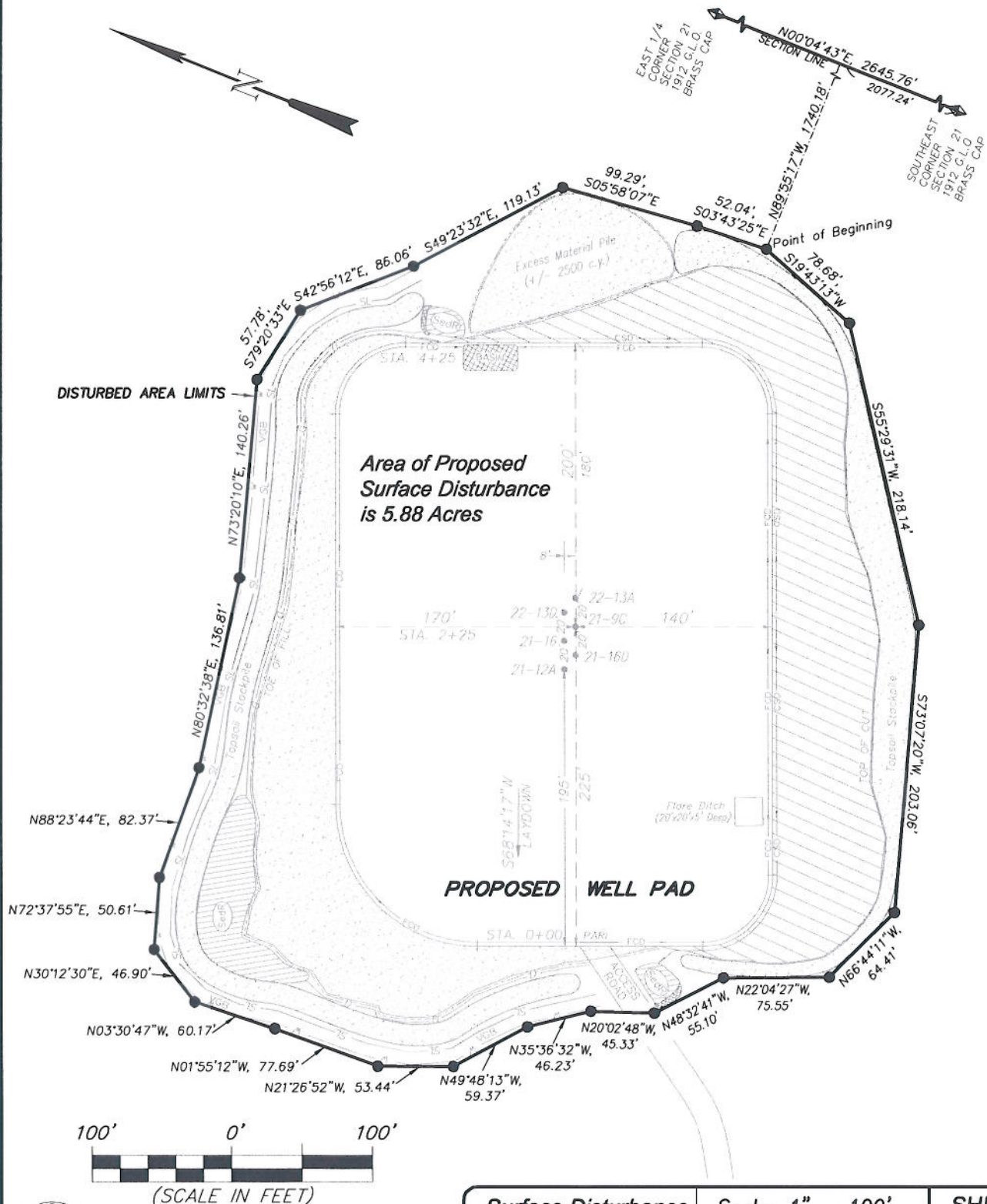
Production Schematic		Scale: 1" = 60'	SHEET
Project No.	05-04-71	Date Surveyed: 9/13/05	6
Date Drawn: 1/13/11		Latest Revision Date: 9/21/11	
			OF 10

EnCana Oil & Gas (USA) Inc.

PJ-21 Well Pad

Section 21, T7S, R95W, 6th P.M.

SURFACE DISTURBANCE AREA



906 Main Street
Evanston, Wyoming 82930
Phone No. (307) 789-4545

Surface Disturbance		Scale: 1" = 100'	SHEET 7 OF 10
Project No.	05-04-71	Date Surveyed:	
Date	1/13/11	Latest Revision	
Drawn:		Date:	