

---

# **SAMSON RESOURCES CORP - EBUS**

---

**Colorado 32-7-9 #14  
IGNACIO BLANCO  
La Plata County , Colorado**

**Cement Surface Casing**  
**22-Oct-2011**

**Job Site Documents**

*The Road to Excellence Starts with Safety*

<b>Sold To #:</b> 345114		<b>Ship To #:</b> 2885844		<b>Quote #:</b>		<b>Sales Order #:</b> 8561247	
<b>Customer:</b> SAMSON RESOURCES CORP - EBUS				<b>Customer Rep:</b> Seidel, Frank			
<b>Well Name:</b> Colorado			<b>Well #:</b> 32-7-9 #14			<b>API/UWI #:</b>	
<b>Field:</b> IGNACIO BLANCO		<b>City (SAP):</b> IGNACIO		<b>County/Parish:</b> La Plata			<b>State:</b> Colorado
<b>Legal Description:</b> Section 9 Township 32N Range 7W							
<b>Contractor:</b> AZTEC WELL SERVICE			<b>Rig/Platform Name/Num:</b> AWS 507				
<b>Job Purpose:</b> Cement Surface Casing							
<b>Well Type:</b> Development Well			<b>Job Type:</b> Cement Surface Casing				
<b>Sales Person:</b> SCOTT, KYLE			<b>Srvc Supervisor:</b> DOBBS, GARY			<b>MBU ID Emp #:</b> 122012	

**Job Personnel**

HES Emp Name	Exp Hrs	Emp #	HES Emp Name	Exp Hrs	Emp #	HES Emp Name	Exp Hrs	Emp #
AXT, STEPHEN Gary	4.5	434802	DOBBS, GARY D	4.5	122012	LAMBSON, NATHANIEL A	4.5	343100

**Equipment**

HES Unit #	Distance-1 way	HES Unit #	Distance-1 way	HES Unit #	Distance-1 way	HES Unit #	Distance-1 way
10025031	50 mile	10804563	50 mile	11324578	50 mile	11583928	50 mile

**Job Hours**

Date	On Location Hours	Operating Hours	Date	On Location Hours	Operating Hours	Date	On Location Hours	Operating Hours
10/22/11	4.5	3						

<b>TOTAL</b>	Total is the sum of each column separately							
--------------	--	--	--	--	--	--	--	--

**Job**

**Job Times**

Formation Name					Date	Time	Time Zone
<b>Formation Depth (MD)</b>	<b>Top</b>		<b>Bottom</b>		<b>Called Out</b>	22 - Oct - 2011	00:01 MST
<b>Form Type</b>	BHST				<b>On Location</b>	22 - Oct - 2011	03:30 MST
<b>Job depth MD</b>	350. ft		<b>Job Depth TVD</b>	350. ft	<b>Job Started</b>	22 - Oct - 2011	06:25 MST
<b>Water Depth</b>	<b>Wk Ht Above Floor</b>				<b>Job Completed</b>	22 - Oct - 2011	07:01 MST
<b>Perforation Depth (MD)</b>	<b>From</b>		<b>To</b>		<b>Departed Loc</b>	22 - Oct - 2011	08:00 MST

**Well Data**

Description	New / Used	Max pressure psig	Size in	ID in	Weight lbm/ft	Thread	Grade	Top MD ft	Bottom MD ft	Top TVD ft	Bottom TVD ft
12-1/4" Open Hole				12.25				.	350.		
8-5/8" Surface Casing	Unknown		8.625	8.097	24.		J-55	.	350.		

**Sales/Rental/3<sup>rd</sup> Party (HES)**

Description	Qty	Qty uom	Depth	Supplier
PLUG,CMTG,TOP,8 5/8,HWE,7.20 MIN/8.09 MA	1	EA		
SUGAR, GRANULATED, IMPERIAL	100	LB		

**Tools and Accessories**

Type	Size	Qty	Make	Depth	Type	Size	Qty	Make	Depth	Type	Size	Qty	Make
Guide Shoe					Packer					Top Plug			
Float Shoe					Bridge Plug					Bottom Plug			
Float Collar					Retainer					SSR plug set			
Insert Float										Plug Container			
Stage Tool										Centralizers			

**Miscellaneous Materials**

Gelling Agt	Conc	Surfactant	Conc	Acid Type	Qty	Conc	%
Treatment Fld	Conc	Inhibitor	Conc	Sand Type	Size	Qty	

**Fluid Data**

Stage/Plug #: 1

Fluid #	Stage Type	Fluid Name	Qty	Qty uom	Mixing Density lbm/gal	Yield ft <sup>3</sup> /sk	Mix Fluid Gal/sk	Rate bbl/min	Total Mix Fluid Gal/sk
1	Water Spacer		10.00	bbl	8.33	.0	.0	.0	
2	Surface Cement	CMT - PREMIUM - CLASS G, 94 LB SK (100003685)	240.0	sacks	15.8	1.17	5.0		5.0
	94 lbm	CMT - PREMIUM - CLASS G REG OR TYPE V, BULK (100003685)							
	2 %	CALCIUM CHLORIDE - HI TEST PELLET (100005053)							
	0.125 lbm	POLY-E-FLAKE (101216940)							
	4.998 Gal	FRESH WATER							
3	Displacement		20.00	bbl	8.33	.0	.0	.0	
Calculated Values		Pressures		Volumes					
Displacement	19.8	Shut In: Instant		Lost Returns		Cement Slurry	47	Pad	
Top Of Cement	0	5 Min		Cement Returns	25	Actual Displacement	20	Treatment	
Frac Gradient		15 Min		Spacers	10	Load and Breakdown		Total Job	
Rates									
Circulating	3	Mixing	3	Displacement	3	Avg. Job	3		
Cement Left In Pipe	Amount	45 ft	Reason	Shoe Joint					
Frac Ring # 1 @	ID	Frac ring # 2 @	ID	Frac Ring # 3 @	ID	Frac Ring # 4 @	ID		
The Information Stated Herein Is Correct				Customer Representative Signature					

*The Road to Excellence Starts with Safety*

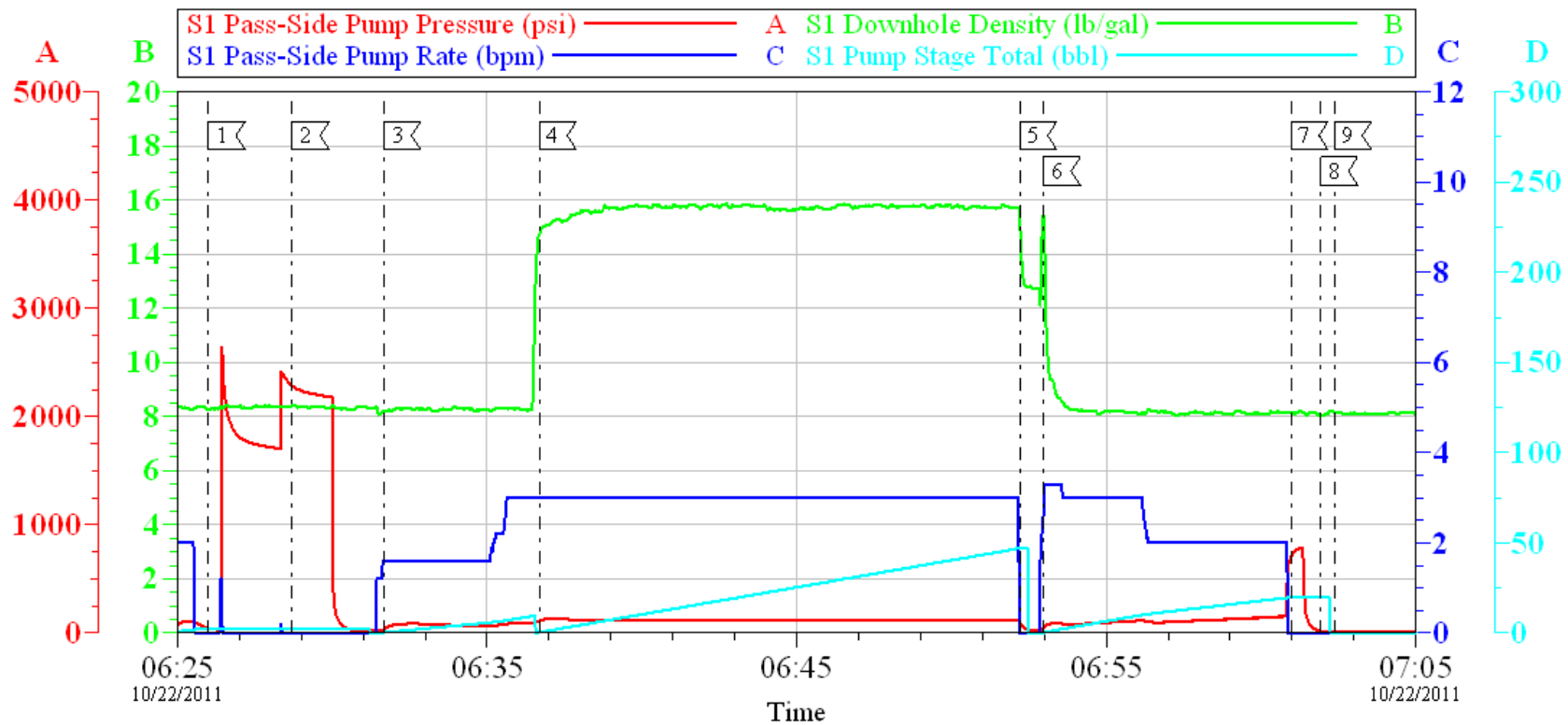
<b>Sold To #:</b> 345114	<b>Ship To #:</b> 2885844	<b>Quote #:</b>	<b>Sales Order #:</b> 8561247
<b>Customer:</b> SAMSON RESOURCES CORP - EBUS		<b>Customer Rep:</b> Seidel, Frank	
<b>Well Name:</b> Colorado		<b>Well #:</b> 32-7-9 #14	<b>API/UWI #:</b>
<b>Field:</b> IGNACIO BLANCO	<b>City (SAP):</b> IGNACIO	<b>County/Parish:</b> La Plata	<b>State:</b> Colorado
<b>Legal Description:</b> Section 9 Township 32N Range 7W			
<b>Lat:</b>		<b>Long:</b>	
<b>Contractor:</b> AZTEC WELL SERVICE		<b>Rig/Platform Name/Num:</b> AWS 507	
<b>Job Purpose:</b> Cement Surface Casing			<b>Ticket Amount:</b>
<b>Well Type:</b> Development Well		<b>Job Type:</b> Cement Surface Casing	
<b>Sales Person:</b> SCOTT, KYLE		<b>Srv Supervisor:</b> DOBBS, GARY	<b>MBU ID Emp #:</b> 122012

Activity Description	Date/Time	Cht #	Rate bbl/min	Volume bbl		Pressure psig		Comments
				Stage	Total	Tubing	Casing	
Pre-Convoy Safety Meeting	10/22/2011 02:15							ALL HES EMPLOYEES
Arrive at Location from Service Center	10/22/2011 03:30							
Assessment Of Location Safety Meeting	10/22/2011 03:35							ALL HES EMPLOYEES
Wait on Customer or Customer Sub-Contractor Equip	10/22/2011 03:45							WAIT ON RIG CREW TO RUN CASING
Wait on Customer or Customer Sub-Contractor Equipm	10/22/2011 04:45							CASING ON BOTTOM, CASING SET @ 354' , 8 5/8" 24# CASING
Pre-Rig Up Safety Meeting	10/22/2011 04:50							ALL HES EMPLOYEES
Rig-Up Equipment	10/22/2011 05:00							RIG UP PUMP TRUCK 1 BULK TRUCK & PICKUP
Pre-Job Safety Meeting	10/22/2011 06:00							EVERYONE OL LOCATION
Start Job	10/22/2011 06:25							
Test Lines	10/22/2011 06:28					2300.0		
Pump Spacer 1	10/22/2011 06:31		2	10			30.0	FRESH WATER
Pump Cement	10/22/2011 06:36		5	47			112.0	MIX AND PUMP 240 SKS OF TYPE G MIXED @ 15.8#, 1.17 YEILD, 5.0 GPS FRESH WATER
Drop Top Plug	10/22/2011 06:51							
Pump Displacement	10/22/2011 06:52		4	10			42.0	FRESH WATER
Bump Plug	10/22/2011 07:00		2	9.2			700.0	FRESH WATER

***Cementing Job Log***

Activity Description	Date/Time	Cht #	Rate bbl/ min	Volume bbl		Pressure psig		Comments
				Stage	Total	Tubing	Casing	
Check Floats	10/22/2011 07:01							FLOATS HELD
Cement Returns to Surface	10/22/2011 07:01							CIRCULATED 25 BBLS OF CEMENT TO PIT
End Job	10/22/2011 07:02							

SAMSON  
COLORADO 32-7-9 #14 / SURFACE



Local Event Log						
Intersection		SPPP		Intersection		SPPP
1	START JOB	06:25:59	46.10	2	TEST LINES	06:28:42 2282
3	PUMP SPACER 1	06:31:39	30.13	4	PUMP CEMENT	06:36:41 112.0
5	DROP PLUG	06:52:12	96.04	6	PUMP DISPLACEMENT	06:52:58 42.44
7	BUMP PLUG	07:00:58	703.3	8	CHECK FLOATS	07:01:55 17.77
9	END JOB	07:02:22	9.000			

Customer: SAMSON	Job Date: 22-Oct-2011	Sales Order #: 8561247
Well Description: COLORADO 32-7-9 #14	Job Type: SURFACE	ADC Used: YES
Customer Rep: WELDON	Service Supervisor: DONNY DOBBS	Operator/Pump: NATE LAMBSON / 11324578

OptiCern v6.4.9  
22-Oct-11 07:22