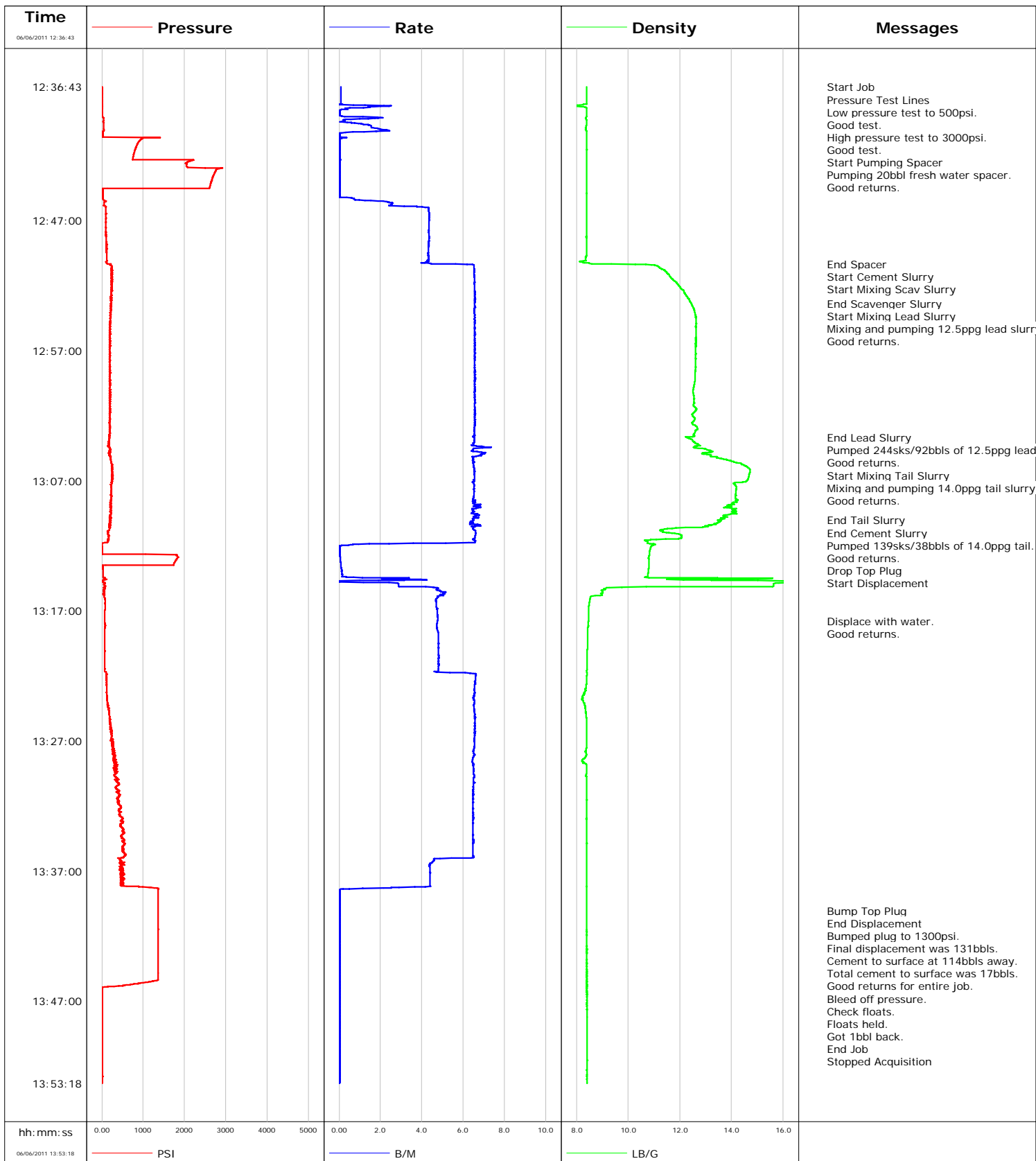


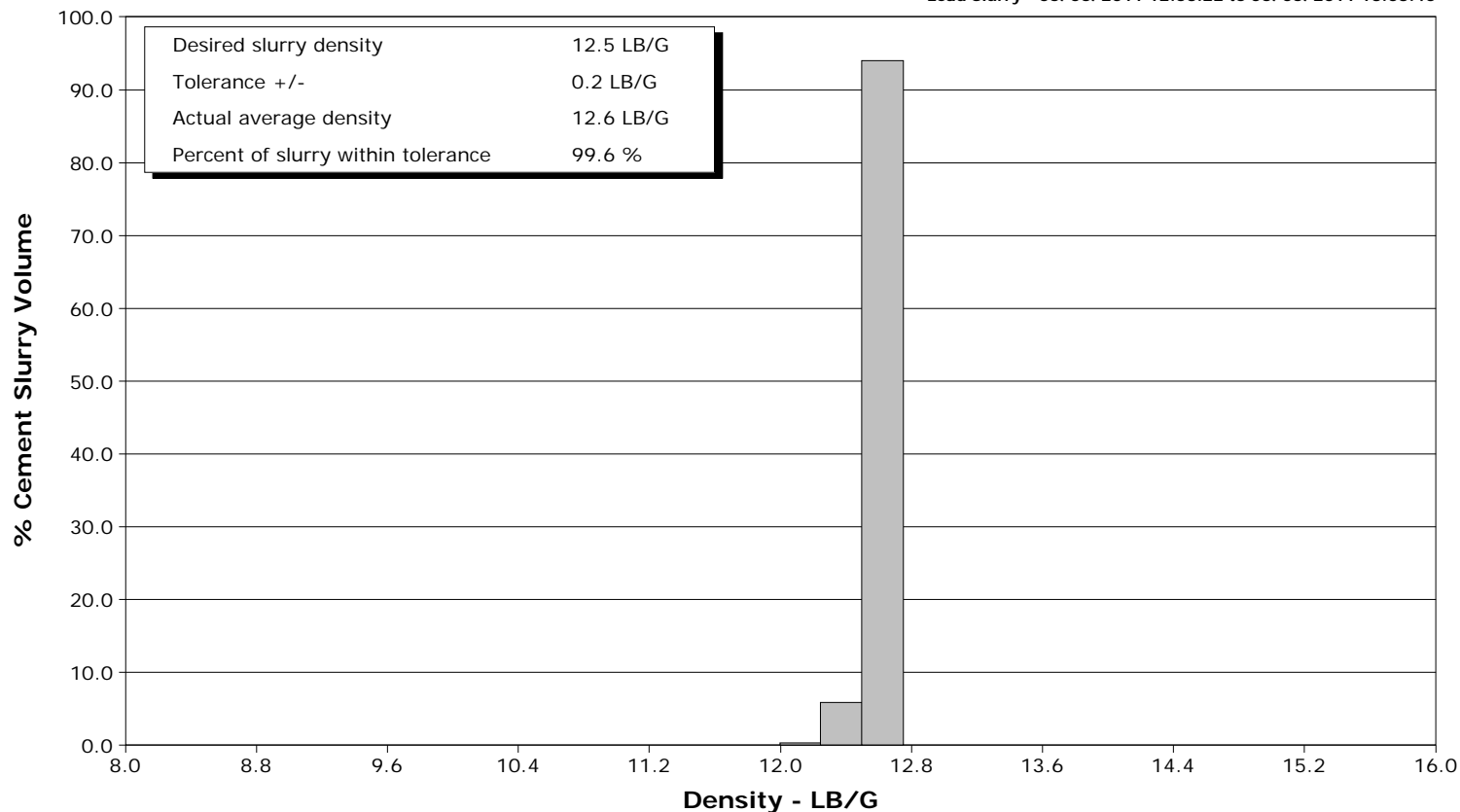
Well	WF14B-24 H26 596	Client	ENCANA
Field	N. PARACHUTE	SIR No.	BRWT-00071
Engineer	JEFF PATTERSON	Job Type	9 5/8" SURFACE
Country	United States	Job Date	06-06-2011



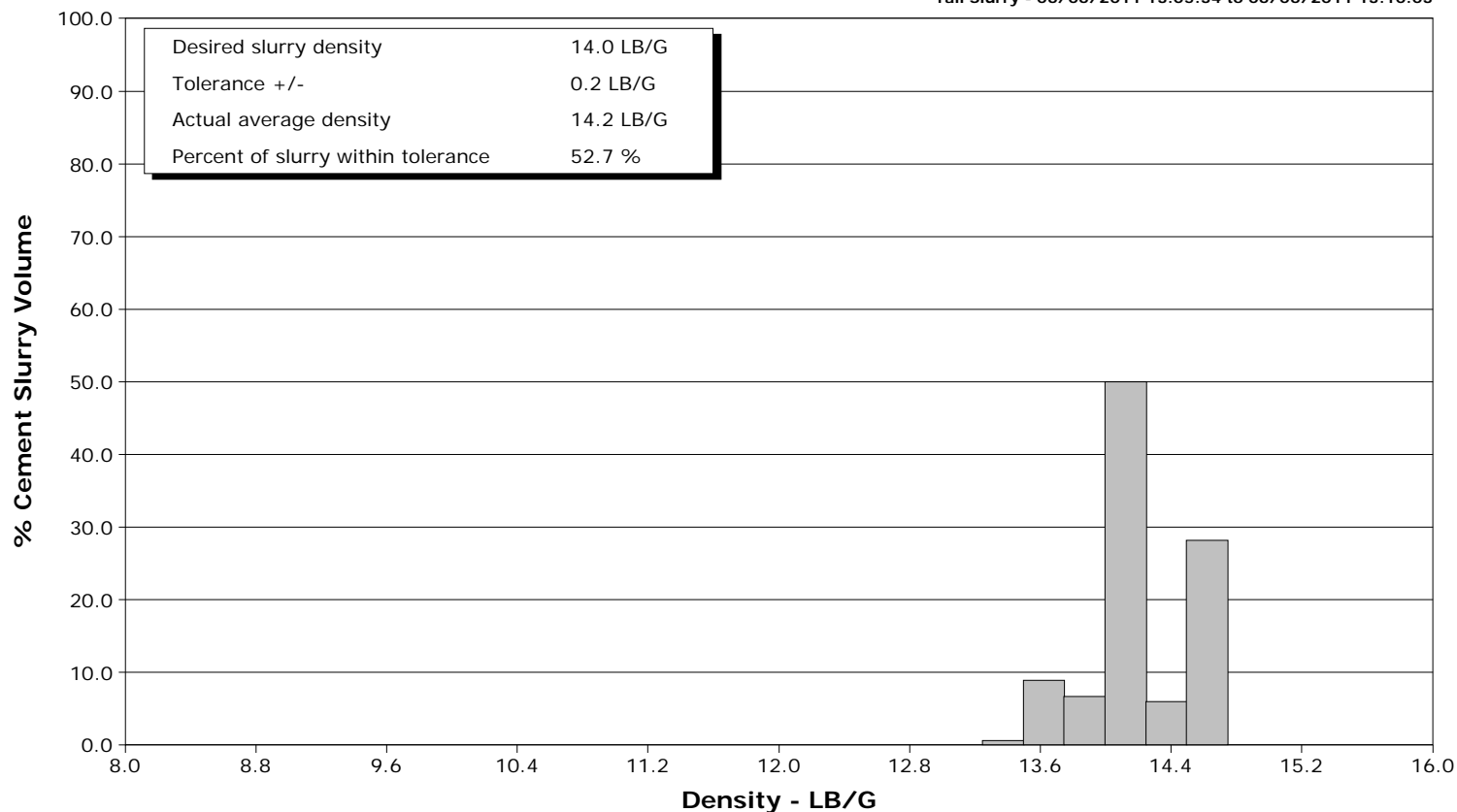
Well WF14B-24 H26 596
Field N. PARACHUTE
Engineer JEFF PATTERSON
Country United States

Client ENCANA
SIR No. BRWT-00071
Job Type 9 5/8" SURFACE
Job Date 06-06-2011

Lead Slurry - 06/06/2011 12:53:22 to 06/06/2011 13:03:40



Tail Slurry - 06/06/2011 13:05:34 to 06/06/2011 13:10:03





Cementing Service Report

				Customer ENCANA		Job Number BRWT-00071		
Well WF14B-24 H26 596 WF14B-24 H26 596			Location (legal) H26		Schlumberger Location GRAND JUNCTION,COLORADO		Job Start Jun/06/2011	
Field N. PARACHUTE		Formation Name/Type SHALE		Deviation 0 deg	Bit Size 12.3 in	Well MD 1742.0 ft		Well TVD 1742.0 ft
County GARFIELD		State/Province Colorado		BHP	BHST 100 degF	BHCT 87 degF	Pore Press. Gradient	
Well Master 0631280601		API/UWI						
Rig Name PATTERSON 303	Drilled For Gas	Service Via Land	Casing/Liner					
			Depth, ft	Size, in	Weight, lb/ft	Grade	Thread	
Offshore Zone	Well Class New	Well Type Development	1742.0	9.630	36.0	J55	8RD	
			0.0	0.000	0.0			
Drilling Fluid Type		Max. Density	Plastic Viscosity	Tubing/Drill Pipe				
				Depth,	Size,	Weight,	Grade	Thread
Service Line Cementing	Job Type 9 5/8" SURFACE							
Max. Allowed Tub. Press 3000 psi	Max. Allowed Ann. Press	WH Connection 9 5/8" CEMENT HEAD	Perforations/Open Hole					
			Top,	Bottom,		No. of Shots	Total Interval	
							Diameter	
			Treat Down Casing	Displacement 131.0 bbl	Packer Type	Packer Depth		
			Tubing Vol.	Casing Vol. 134.7 bbl	Annular Vol. 107.0 bbl	Openhole Vol. 251.0 bbl		
Casing/Tubing Secured <input checked="" type="checkbox"/>		1 Hole Vol. Circulated prior to Cement <input checked="" type="checkbox"/>		Casing Tools		Squeeze Job		
Lift Pressure 862 psi				Shoe Type Guide		Squeeze Type		
Pipe Rotated <input type="checkbox"/>		Pipe Reciprocated <input type="checkbox"/>		Shoe Depth 1742.0 ft		Tool Type		
No. Centralizers		Top Plugs 1	Bottom Plugs	Stage Tool Type		Tool Depth		
Cement Head Type Single			Stage Tool Depth		Tail Pipe Size			
Job Scheduled For Jun/06/2011		Arrived on Location Jun/06/2011	Leave Location Jun/06/2011	Collar Type Float		Tail Pipe Depth		
				Collar Depth 1699.0 ft		Sqz. Total Vol.		
Date	Time 24-hr clock	Treating Pressure PSI	Flow Rate B/M	Density LB/G	Volume BBL	Message		
06/06/2011	12:09:49					Started Acquisition		
06/06/2011	12:36:43	-0	0.1	8.39	0.0			
06/06/2011	12:36:44					Start Job		
06/06/2011	12:36:44	-0	0.1	8.39	0.0			
06/06/2011	12:36:46					Pressure Test Lines		
06/06/2011	12:36:46	-0	0.1	8.39	0.0			
06/06/2011	12:36:48					Low pressure test to 500psi.		
06/06/2011	12:36:48					Good test.		
06/06/2011	12:36:48					High pressure test to 3000psi.		
06/06/2011	12:36:48	0	0.1	8.39	0.0			
06/06/2011	12:36:49					Good test.		
06/06/2011	12:36:49					Start Pumping Spacer		
06/06/2011	12:36:49	0	0.1	8.39	0.0			
06/06/2011	12:36:51					Pumping 20bbl fresh water spacer.		
06/06/2011	12:36:51	0	0.1	8.39	0.0			
06/06/2011	12:36:52					Good returns.		
06/06/2011	12:36:52	-0	0.1	8.39	0.0			
06/06/2011	12:38:09	4	1.3	7.98	0.2			
06/06/2011	12:39:49	39	1.6	8.38	1.4			
06/06/2011	12:41:29	815	0.0	8.40	2.2			
06/06/2011	12:43:09	2759	0.0	8.40	2.2			

Well			Field	Job Start	Customer	Job Number
WF14B-24 H26 596 WF14B-24 H26 596			N. PARACHUTE	Jun/06/2011	ENCANA	BRWT-00071
Date	Time 24-hr clock	Treating Pressure PSI	Flow Rate B/M	Density LB/G	Volume BBL	Message
06/06/2011	12:46:29	91	4.4	8.39	5.9	
06/06/2011	12:48:09	97	4.3	8.39	13.1	
06/06/2011	12:49:49	119	4.3	8.36	20.3	
06/06/2011	12:50:21					End Spacer
06/06/2011	12:50:21	216	5.6	9.34	22.6	
06/06/2011	12:50:22					Start Cement Slurry
06/06/2011	12:50:22	227	6.2	10.27	22.7	
06/06/2011	12:50:23					Start Mixing Scav Slurry
06/06/2011	12:50:23	227	6.2	10.27	22.8	
06/06/2011	12:51:29	242	6.5	11.69	30.0	
06/06/2011	12:53:09	228	6.6	12.37	40.9	
06/06/2011	12:53:21					End Scavenger Slurry
06/06/2011	12:53:21	229	6.6	12.44	42.3	
06/06/2011	12:53:22					Start Mixing Lead Slurry
06/06/2011	12:53:22	220	6.5	12.44	42.4	
06/06/2011	12:53:24					Mixing and pumping 12.5ppg lead slurry.
06/06/2011	12:53:24					Good returns.
06/06/2011	12:53:24	219	6.6	12.45	42.6	
06/06/2011	12:54:49	204	6.6	12.62	51.9	
06/06/2011	12:56:29	202	6.6	12.62	62.8	
06/06/2011	12:58:09	191	6.5	12.60	73.7	
06/06/2011	12:59:49	202	6.5	12.54	84.7	
06/06/2011	13:01:29	189	6.6	12.64	95.6	
06/06/2011	13:03:09	200	6.5	12.60	106.5	
06/06/2011	13:03:40					End Lead Slurry
06/06/2011	13:03:40	184	6.5	12.27	109.9	
06/06/2011	13:03:42					Pumped 244sks/92bbbls of 12.5ppg lead.
06/06/2011	13:03:42					Good returns.
06/06/2011	13:03:42	187	6.5	12.31	110.1	
06/06/2011	13:04:49	205	6.9	13.19	117.5	
06/06/2011	13:05:34					Start Mixing Tail Slurry
06/06/2011	13:05:34	238	6.5	14.08	122.5	
06/06/2011	13:05:36					Mixing and pumping 14.0ppg tail slurry.
06/06/2011	13:05:36					Good returns.
06/06/2011	13:05:36	232	6.5	14.17	122.7	
06/06/2011	13:06:29	257	6.5	14.69	128.4	
06/06/2011	13:08:09	218	6.5	14.16	139.3	
06/06/2011	13:09:49	181	6.6	13.72	150.2	
06/06/2011	13:10:03					End Tail Slurry
06/06/2011	13:10:03	221	6.5	13.46	151.8	
06/06/2011	13:10:10					End Cement Slurry
06/06/2011	13:10:10	201	6.3	13.55	152.5	
06/06/2011	13:10:12					Pumped 139sks/38bbbls of 14.0ppg tail.
06/06/2011	13:10:12					Good returns.
06/06/2011	13:10:12	190	6.4	13.51	152.7	
06/06/2011	13:10:47					Drop Top Plug
06/06/2011	13:10:47					Start Displacement
06/06/2011	13:10:47	181	6.5	11.23	156.5	
06/06/2011	13:11:29	169	6.5	11.77	161.1	
06/06/2011	13:13:09	1783	0.1	10.81	163.5	
06/06/2011	13:14:49	31	1.2	16.94	164.3	
06/06/2011	13:16:29	80	4.7	8.50	171.6	
06/06/2011	13:17:49					Displace with water.
06/06/2011	13:17:49					Good returns.

Well WF14B-24 H26 596 WF14B-24 H26 596			Field N. PARACHUTE		Job Start Jun/06/2011		Customer ENCANA		Job Number BRWT-00071	
Date	Time 24-hr clock	Treating Pressure PSI	Flow Rate B/M	Density LB/G	Volume BBL	Message				
06/06/2011	13:18:09	82	4.7	8.45	179.5					
06/06/2011	13:19:49	70	4.8	8.43	187.5					
06/06/2011	13:21:29	70	4.8	8.41	195.5					
06/06/2011	13:23:09	125	6.5	8.35	206.0					
06/06/2011	13:24:49	180	6.5	8.36	216.9					
06/06/2011	13:26:29	217	6.6	8.40	227.8					
06/06/2011	13:28:09	319	6.5	8.37	238.7					
06/06/2011	13:29:49	351	6.5	8.39	249.5					
06/06/2011	13:31:29	368	6.5	8.40	260.3					
06/06/2011	13:33:09	452	6.5	8.40	271.1					
06/06/2011	13:34:49	541	6.5	8.40	281.9					
06/06/2011	13:36:29	486	4.4	8.40	291.8					
06/06/2011	13:38:09	477	4.4	8.40	299.1					
06/06/2011	13:39:49	1355	0.0	8.40	299.8					
06/06/2011	13:40:02					Bump Top Plug				
06/06/2011	13:40:02	1355	0.0	8.40	299.8					
06/06/2011	13:40:03					End Displacement				
06/06/2011	13:40:03	1355	0.0	8.40	299.8					
06/06/2011	13:40:05					Bumped plug to 1300psi.				
06/06/2011	13:40:05					Final displacement was 131bbbls.				
06/06/2011	13:40:05					Cement to surface at 114bbbls away.				
06/06/2011	13:40:05	1356	0.0	8.40	299.8					
06/06/2011	13:40:06					Total cement to surface was 17bbbls.				
06/06/2011	13:40:06					Good returns for entire job.				
06/06/2011	13:40:06					Bleed off pressure.				
06/06/2011	13:40:06					Check floats.				
06/06/2011	13:40:06	1356	0.0	8.40	299.8					
06/06/2011	13:40:07					Floats held.				
06/06/2011	13:40:07					Got 1bbl back.				
06/06/2011	13:40:07	1356	0.0	8.40	299.8					
06/06/2011	13:41:29	1359	0.0	8.40	299.8					
06/06/2011	13:42:41					End Job				
06/06/2011	13:42:41	1361	0.0	8.40	299.8					
06/06/2011	13:43:09	1361	0.0	8.41	299.8					
06/06/2011	13:44:49	1364	0.0	8.41	299.8					
06/06/2011	13:46:29	6	0.0	8.40	299.8					
06/06/2011	13:48:09	6	0.0	8.41	299.9					
06/06/2011	13:49:49	4	0.0	8.41	299.9					
06/06/2011	13:51:29	4	0.0	8.41	299.9					
06/06/2011	13:53:09	5	0.0	8.41	299.9					

Well WF14B-24 H26 596 WF14B-24 H26 596	Field N. PARACHUTE	Job Start Jun/06/2011	Customer ENCANA	Job Number BRWT-00071
---	-----------------------	--------------------------	--------------------	--------------------------

Post Job Summary

Average Pump Rates, bbl/min					Volume of Fluid Injected, bbl			
Slurry 6.0	N2	Mud	Maximum Rate 8.0	Total Slurry 130.0	Mud	Spacer 20.0	N2	
Treating Pressure Summary, psi					Breakdown Fluid			
Maximum 3000	Final 1300	Average 200	Bump Plug to 1300	Breakdown	Type	Volume	Density	
Avg. N2 Percent	Designed Slurry Volume 130.0 bbl		Displacement 131.0 bbl	Mix Water Temp 65 degF	Cement Circulated to Surface? <input checked="" type="checkbox"/>	Volume 17.0 bbl		
					Washed Thru Perfs <input type="checkbox"/>	To		
Customer or Authorized Representative FLOYD ROBERTS			Schlumberger Supervisor JEFF PATTERSON			Circulation Lost <input type="checkbox"/>	Job Completed <input checked="" type="checkbox"/>	
						-	-	