

T10N, R59W, 6th P.M.

WHITING OIL & GAS CORP.

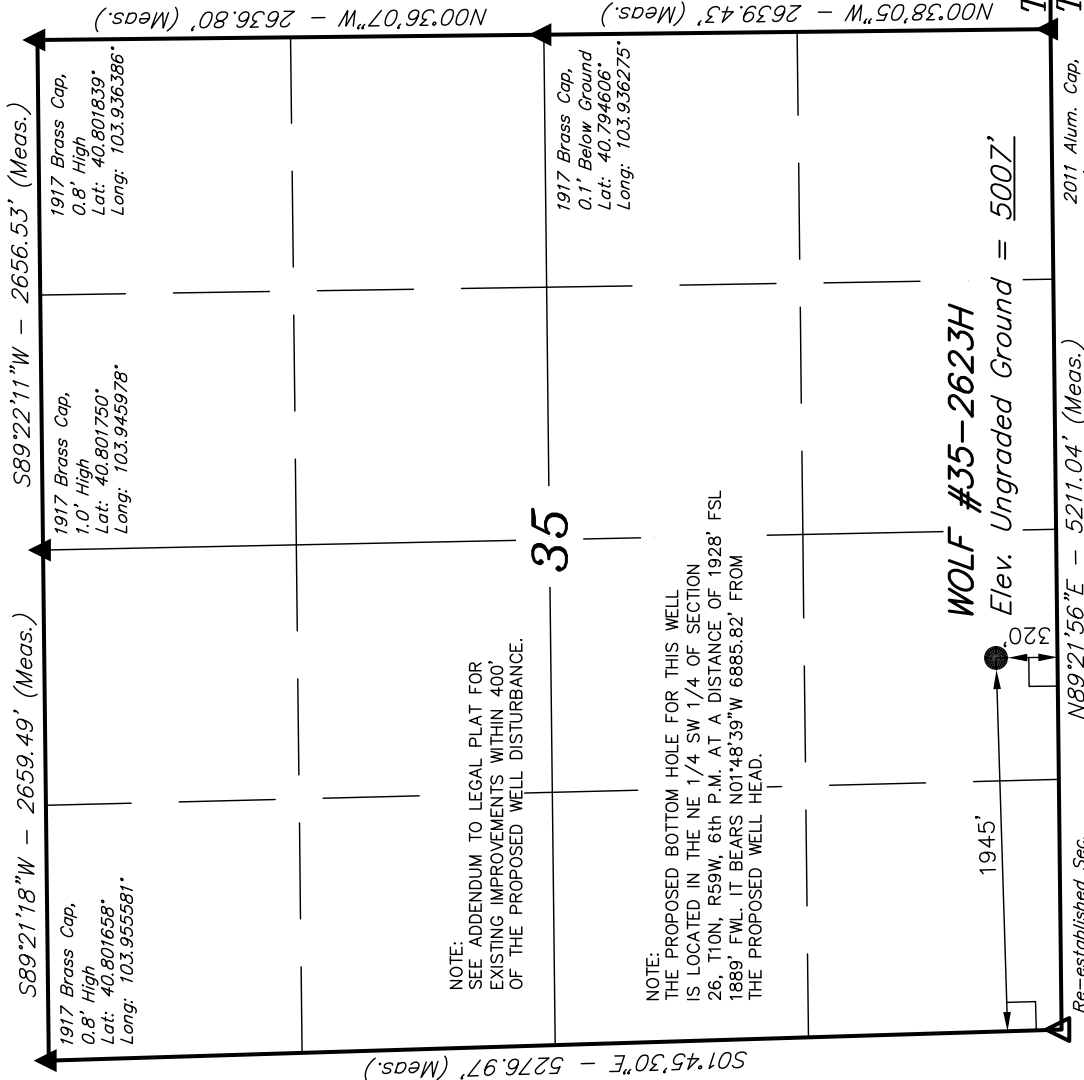
Well location, WOLF #35-2623H (SURFACE LOCATION), located as shown in the SE 1/4 SW 1/4 of Section 35, T10N, R59W, 6th P.M., Weld County, Colorado.

BASIS OF ELEVATION

SPOT ELEVATION LOCATED AT THE NORTHEAST CORNER OF SECTION 15, T9N, R58W, 6th P.M. TAKEN FROM THE GATEHOOK SPRING, QUADRANGLE, COLORADO, WELD COUNTY, 7.5 MINUTE QUAD (TOPOGRAPHIC MAP) PUBLISHED BY THE UNITED STATES DEPARTMENT OF THE INTERIOR, GEOLOGICAL SURVEY. SAID ELEVATION IS MARKED AS BEING 4679 FEET.

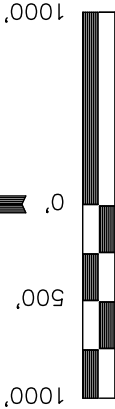
BASIS OF BEARINGS

BASIS OF BEARINGS IS A G.P.S. OBSERVATION.



NOTE:  
SEE ADDENDUM TO LEGAL PLAT FOR EXISTING IMPROVEMENTS WITHIN 400' OF THE PROPOSED WELL DISTURBANCE.

NOTE:  
THE PROPOSED BOTTOM HOLE FOR THIS WELL IS LOCATED IN THE NE 1/4 SW 1/4 OF SECTION 26, T10N, R59W, 6th P.M. AT A DISTANCE OF 1928' FSL 1889' FWL. IT BEARS N01°48'39"W 6885.82' FROM THE PROPOSED WELL HEAD.



CERTIFICATE

THIS IS TO CERTIFY THAT THE ABOVE PLAT WAS PREPARED FROM FIELD NOTES OF ACTUAL SURVEYS MADE BY ME OR UNDER MY SUPERVISION AND THAT THE SAME ARE TRUE AND CORRECT TO THE BEST OF MY KNOWLEDGE AND BELIEF.

*[Signature]*  
REGISTERED LAND SURVEYOR  
REGISTRATION NO. 17492  
STATE OF COLORADO  
07-19-11

REVISED: 12-19-11 T.B.

UINTAH ENGINEERING & LAND SURVEYING  
85 SOUTH 200 EAST - VERNAL, UTAH 84078  
(435) 789-1017

LEGEND:

|   |                                                        |
|---|--------------------------------------------------------|
| — | = 90° SYMBOL                                           |
| ● | = PROPOSED WELL HEAD.                                  |
| ▲ | = SECTION CORNERS LOCATED.                             |
| △ | = SECTION CORNERS RE-ESTABLISHED. (Not Set on Ground.) |

|                                                                                                            |
|------------------------------------------------------------------------------------------------------------|
| PDOP = 1.7                                                                                                 |
| NAD 83 (SURFACE LOCATION)<br>LATITUDE = 40°47'17.27" (40.788131)<br>LONGITUDE = 103°56'52.75" (103.947986) |
| NAD 27 (SURFACE LOCATION)<br>LATITUDE = 40°47'17.32" (40.788144)<br>LONGITUDE = 103°56'50.94" (103.947483) |

|                         |                            |                         |
|-------------------------|----------------------------|-------------------------|
| SCALE<br>1" = 1000'     | DATE SURVEYED:<br>07-25-11 | DATE DRAWN:<br>07-29-11 |
| PARTY<br>J.H. C.Z. T.B. | REFERENCES<br>G.L.O. PLAT  |                         |
| WEATHER<br>WARM         | FILE                       |                         |
|                         |                            | WHITING OIL & GAS CORP. |

T10N, R59W, 6th P.M.

WHITING OIL & GAS CORP.

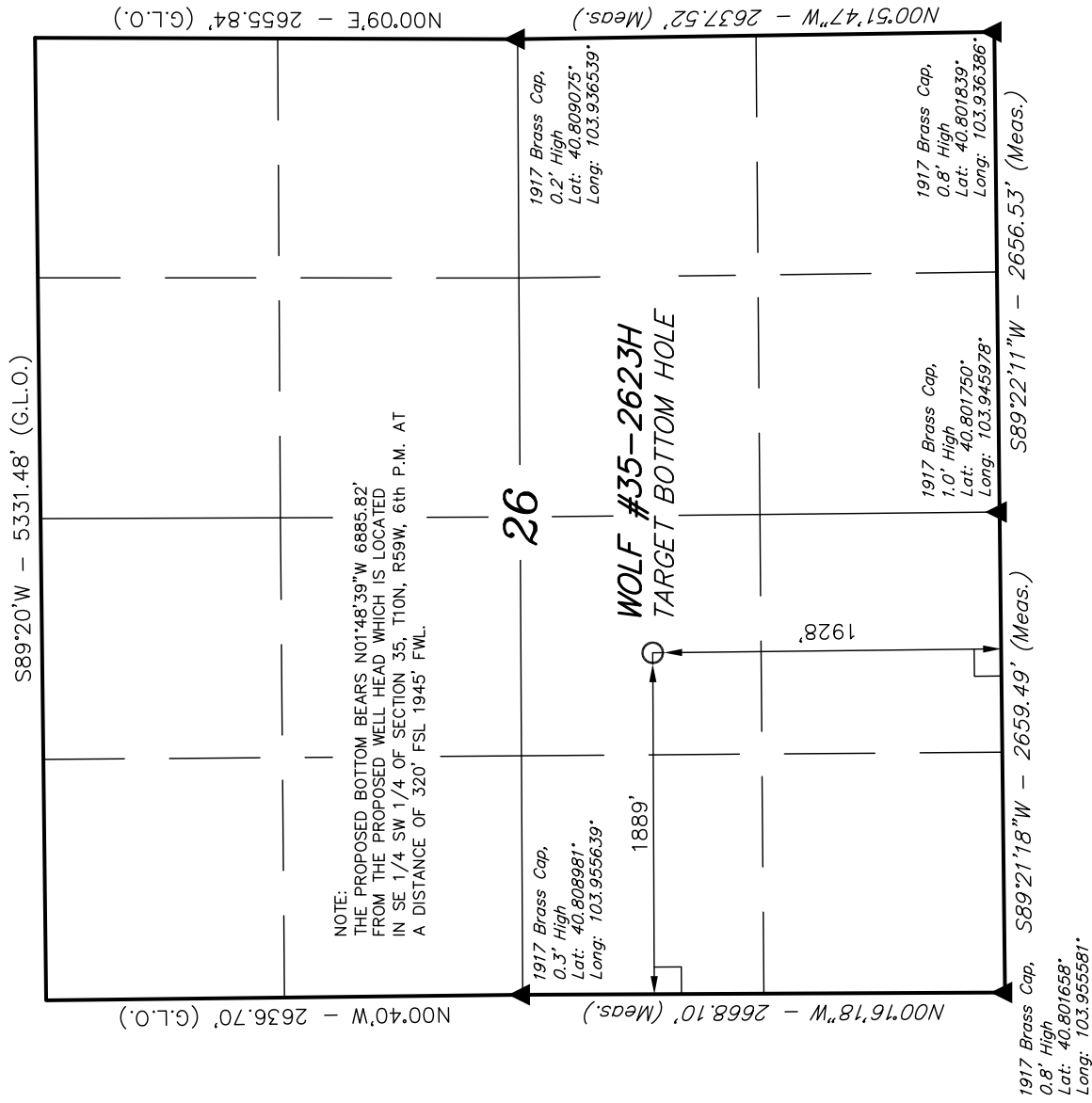
Well location, WOLF #35-2623H (TARGET BOTTOM HOLE), located as shown in the NE 1/4 SW 1/4 of Section 26, T10N, R59W, 6th P.M., Weld County, Colorado.

BASIS OF ELEVATION

SPOT ELEVATION LOCATED AT THE NORTHEAST CORNER OF SECTION 15, T9N, R58W, 6th P.M. TAKEN FROM THE GATEHOOK SPRING, QUADRANGLE, COLORADO, WELD COUNTY, 7.5 MINUTE QUAD (TOPOGRAPHIC MAP) PUBLISHED BY THE UNITED STATES DEPARTMENT OF THE INTERIOR, GEOLOGICAL SURVEY. SAID ELEVATION IS MARKED AS BEING 4679 FEET.

BASIS OF BEARINGS

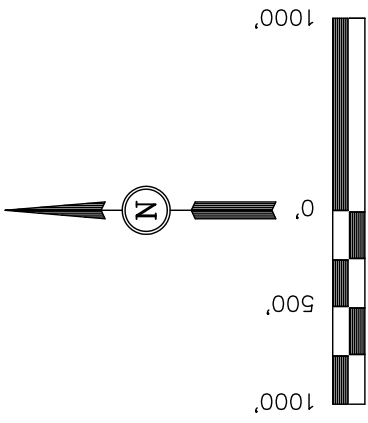
BASIS OF BEARINGS IS A G.P.S. OBSERVATION.



LEGEND:

- 90° SYMBOL
- PROPOSED WELL HEAD.
- SECTION CORNERS LOCATED.
- SECTION CORNERS RE-ESTABLISHED. (Not Set on Ground.)

| NAD 83 (TARGET BOTTOM HOLE) |                            |
|-----------------------------|----------------------------|
| LATITUDE =                  | 40°48'25.25" (40.807014)   |
| LONGITUDE =                 | 103°56'55.69" (103.948803) |
| NAD 27 (TARGET BOTTOM HOLE) |                            |
| LATITUDE =                  | 40°48'25.30" (40.807028)   |
| LONGITUDE =                 | 103°56'53.88" (103.948300) |



SCALE

CERTIFICATE

THIS IS TO CERTIFY THAT THE ABOVE PLAT WAS PREPARED FROM FIELD NOTES OF ACTUAL SURVEYS MADE BY ME OR UNDER MY SUPERVISION AND THAT THE SAME ARE TRUE AND CORRECT TO THE BEST OF MY KNOWLEDGE AND BELIEF.

*[Signature]*  
REGISTERED LAND SURVEYOR  
REGISTRATION NO. 17492  
STATE OF COLORADO  
EXPIRATION DATE 02-19-11

REVISED: 12-19-11 T.B.

| UINTAH ENGINEERING & LAND SURVEYING                      |                            |                         |  |
|----------------------------------------------------------|----------------------------|-------------------------|--|
| 85 SOUTH 200 EAST - VERNAL, UTAH 84078<br>(435) 789-1017 |                            |                         |  |
| SCALE<br>1" = 1000'                                      | DATE SURVEYED:<br>07-25-11 | DATE DRAWN:<br>07-29-11 |  |
| PARTY<br>J.H. C.Z. T.B.                                  | REFERENCES<br>G.L.O. PLAT  |                         |  |
| WEATHER<br>WARM                                          | FILE                       |                         |  |
| WHITING OIL & GAS CORP.                                  |                            |                         |  |