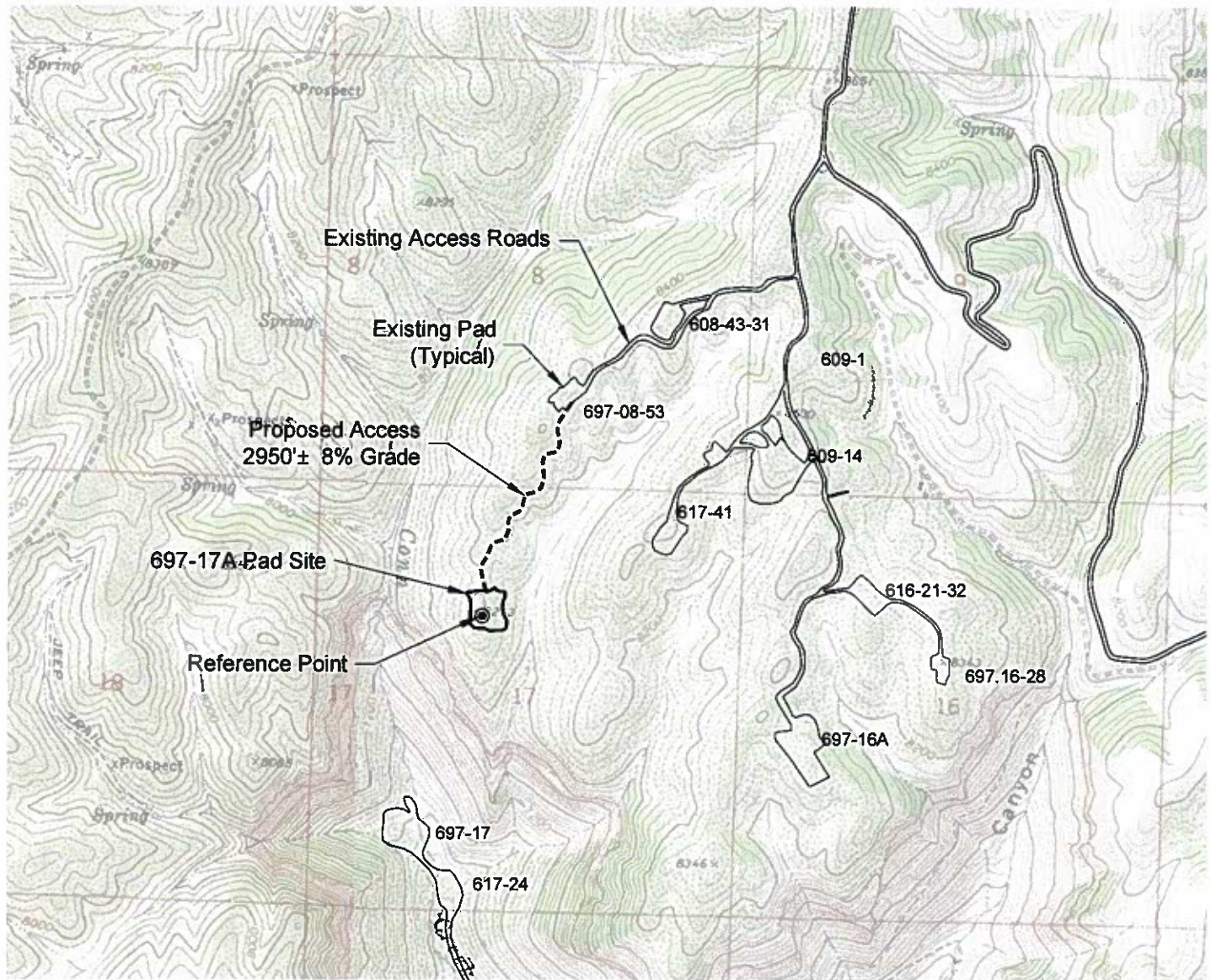


ACCESS ROAD MAP



DRIVING DIRECTIONS:

From I-70 Exit 62, the exit to DeBeque and the intersection of Roan Creek Road and I-70, travel north along Roan Creek Road, aka Garfield County Road 204, passing by the Town of DeBeque, 6.1 miles to the intersection of Garfield County Road 204 and private road known as Logan Wash Road, being Mile Post 0 of these driving instructions.

MP 0 Intersection of Garfield County Road 204 and Logan Wash Road, gravel surface. Travel easterly along Logan Wash Road.

MP 3.8 Pass through Oxy guard station, continue along Logan Wash Road.

MP 6.0 Begin series of switchbacks from valley floor to top of Roan Plateau.

MP 11.4 Top of Roan Plateau, continue along gravel road, steep grades and tight turns.

MP 17.3 Pass by gas plant.

MP 17.9 T intersection. Old cabin and ranching operations. Turn left, continue along gravel road.

MP 20.8 T intersection. Turn left, continue along gravel road.

MP 21.2 Y intersection signed "All Williams Traffic". Bear right.

MP 24.3 Enter onto Oxy CC609-33 pad. Bear right around switchback.

MP 24.7 Pass through Oxy CC 609-02 pad and holding pond. Continue along gravel road.

MP 24.9 T intersection. Turn left. Continue along gravel road.

MP 25.2 T intersection, access road to Oxy CC 608 43 31 and Oxy CC 697 08 53 pads. Turn right towards aforementioned pads.

MP 25.4 Oxy CC608 43 31 pad, bear left to bypass pad.

MP 25.9 Enter onto Oxy CC 697 08 53 pad, bear left along edge of pad to access to OXY CC 697 17A pad.

MP 26.3 Enter onto Oxy CC 697 17A pad.

11/29/10



LAND SURVEYING AND MAPPING
LAFAYETTE - WINTER PARK
Ph 303 666 0379 Fx 303 665 6320

OXY USA WTP LP
CASCADE CREEK 697-17A PAD

SE1/4 NW1/4 SECTION 17 T6S R97W
6th PM GARFIELD COUNTY COLORADO