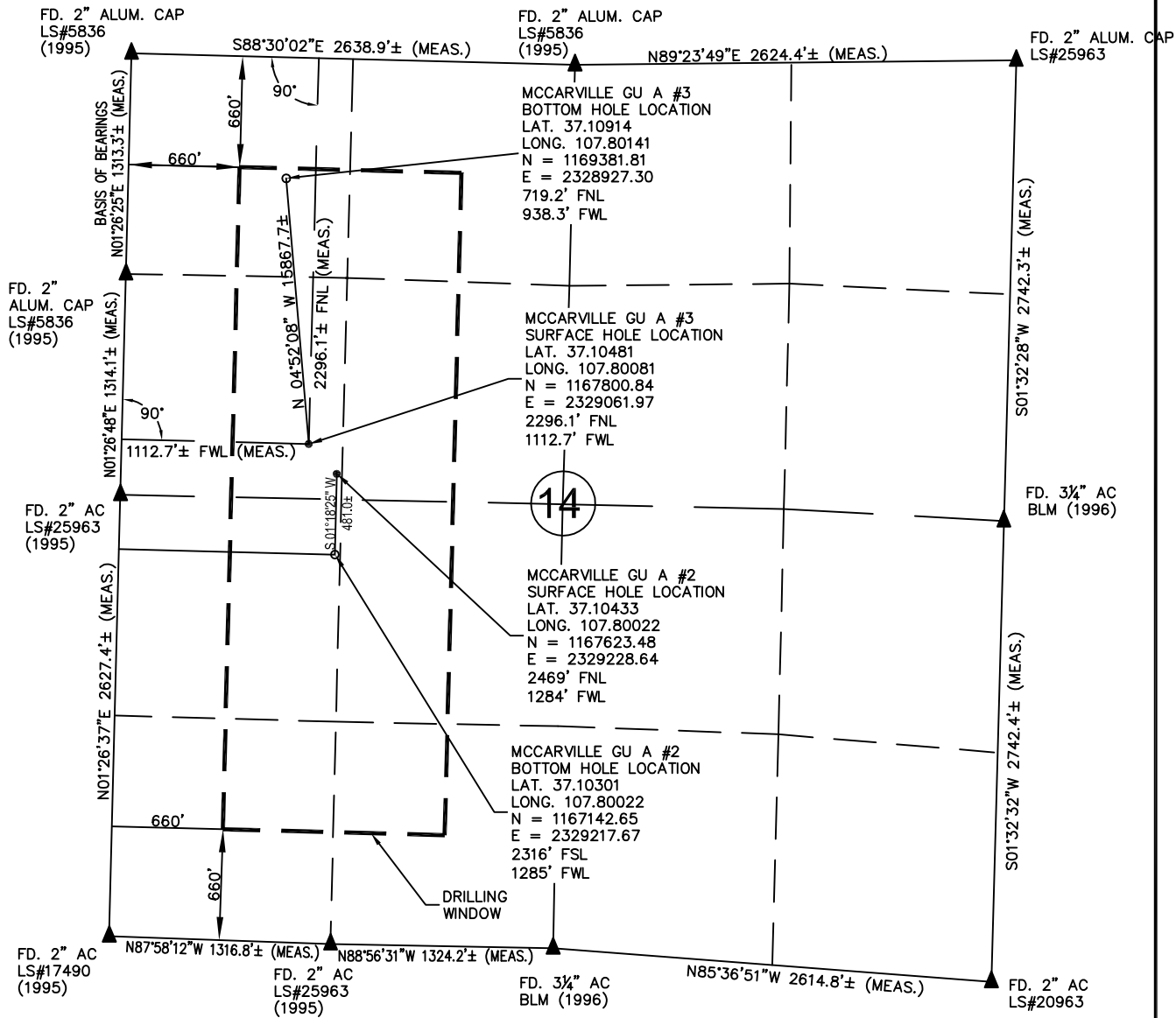


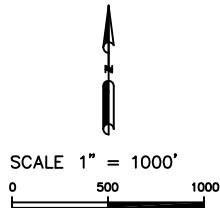
Drawing: MCCARVILLE_GUA3_MULTI-WELL-90DEC11.DWG Plotted by: DALLAS_KNOX Date: 12/13/2011 01:31:21 PM R:\Project Files\BP\BP 80 Acres Infill\McCarville GU A #3\Permitting Drawings\



OPERATOR: BP AMERICA PRODUCTION COMPANY
LEASE: MCCARVILLE GU A #3
SECTION 14 TOWNSHIP 33 NORTH RANGE 09 WEST N.M.P.M.
COUNTY: LA PLATA COUNTY, COLORADO

MCCARVILLE GU A #3: 2296.1 FEET FROM THE NORTH LINE, AND 1112.7 FEET FROM THE WEST LINE
BOTTOM HOLE LOCATION: 719.2 FEET FROM THE NORTH LINE, AND 938.3 FEET FROM THE WEST LINE
GROUND LEVEL ELEVATION: 6767.9'

MCCARVILLE GU A #2: 2469.0 FEET FROM THE NORTH LINE, AND 1283.8 FEET FROM THE WEST LINE
BOTTOM HOLE LOCATION: 2316 FEET FROM THE SOUTH LINE, AND 1285 FEET FROM THE WEST LINE
GROUND LEVEL ELEVATION: 6757.9'



LEGEND:
● = PROPOSED WELL HEAD
○ = BOTTOM HOLE LOCATION
▲ = SECTION CORNERS LOCATED
△ = SECTION CORNERS NOT FOUND OR SET THIS SURVEY (CALCULATED LOCATION).
S.U.I.T. = SOUTHERN UTE INDIAN TRIBE
BLM = BUREAU OF LAND MANAGEMENT

- 1) BASIS OF BEARING: GPS OBSERVATION ALONG THE WEST LINE OF THE NW1/4 OF SAID SECTION 14. BEARS: N01°26'25"E
- 2) DATE FIELD SURVEY: 01/18/11
- 3) ELEVATION DETERMINED FROM NGVD 1988 DATUM, AND COLLECTED VIA NAD 83 SPC CO-S, FEET (GRID).
- 4) RECORD BEARING AND DISTANCE TAKEN FROM GLO PLAT ON FILE AT BLM OFFICE IN DURANGO, CO.
- 5) ALL DIMENTIONS SHOWN HEREON ARE ON SPC CO-S GRID.
- 6) INSTRUMENT OPERATOR: BILL MITCHELL
- 7) PDOP VALUE: 2.5

PROJ. NO 49228572 DRAWN BY DK	FILE NO. MCCARVILLEGUA3_MULTI-WELL DATE 12/09/11 CLIENT PC	MCCARVILLE GU A #3 MULTI - WELL PLAN BP AMERICA PROD. CO. - DURANGO, CO	REV B